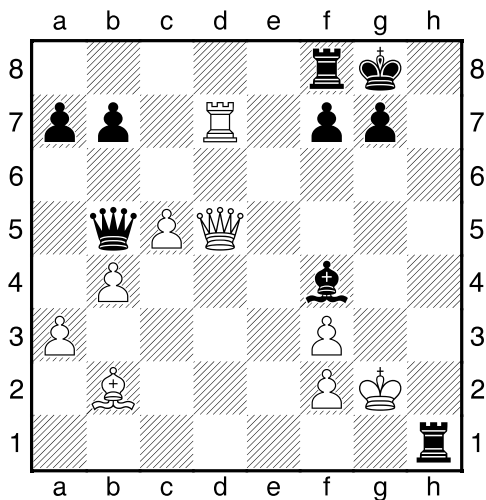
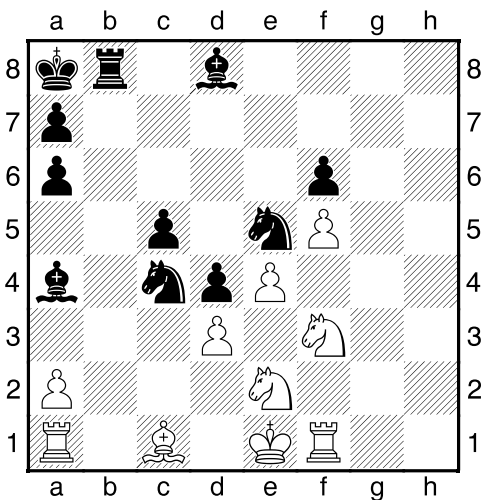


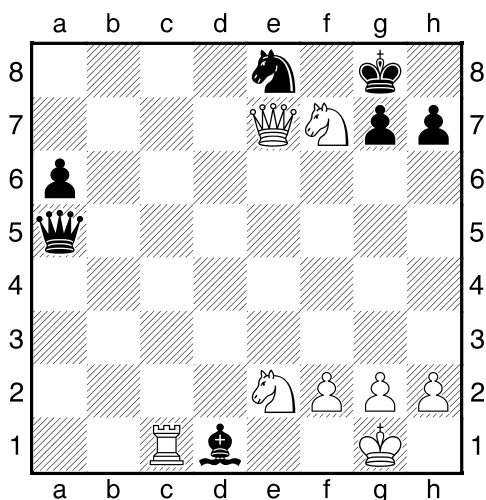
Černý na tahu



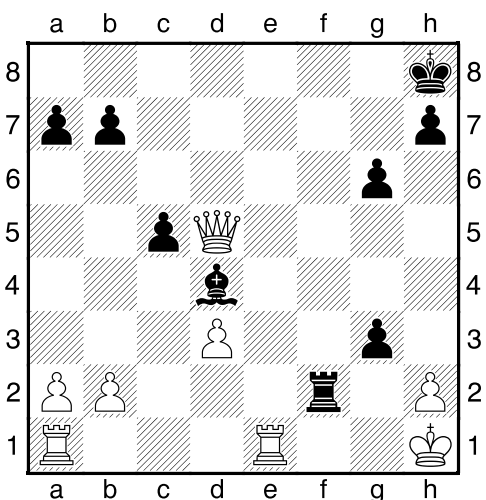
Černý na tahu



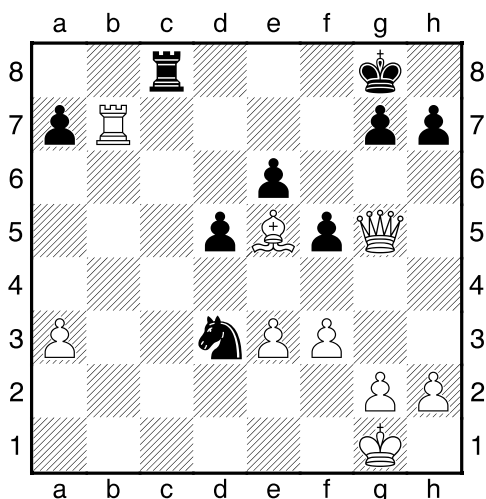
Černý na tahu



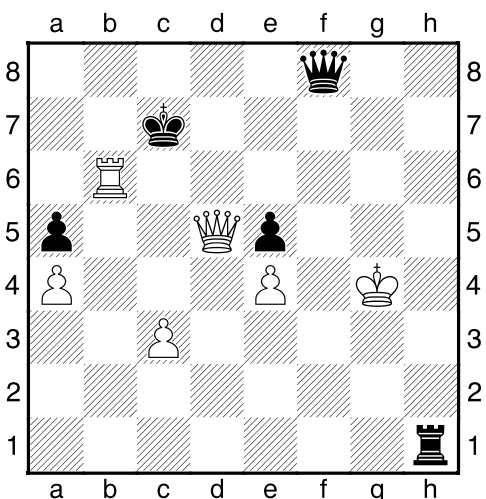
Černý na tahu



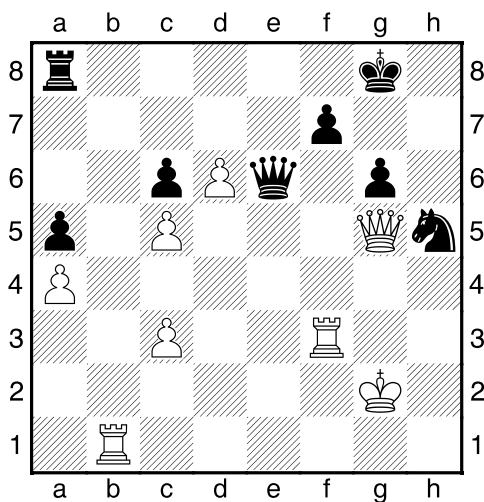
Černý na tahu



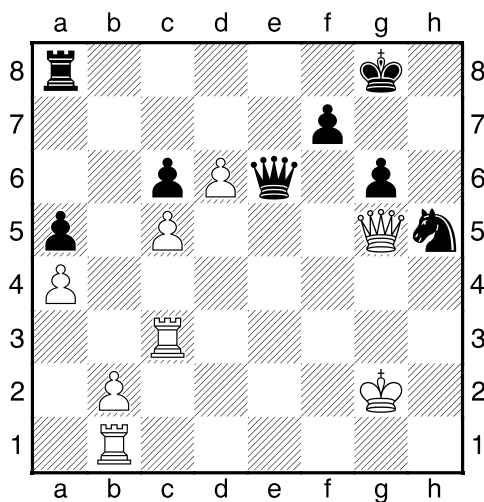
Černý na tahu



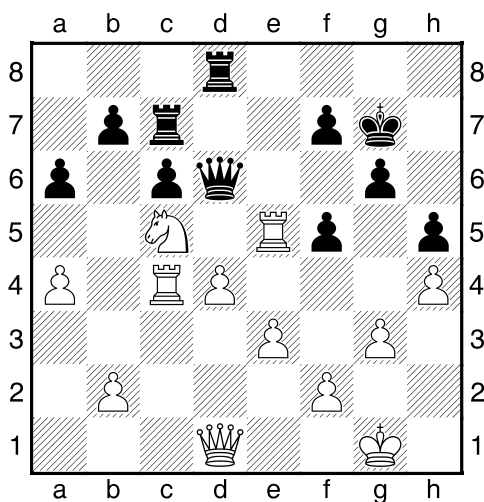
Černý na tahu



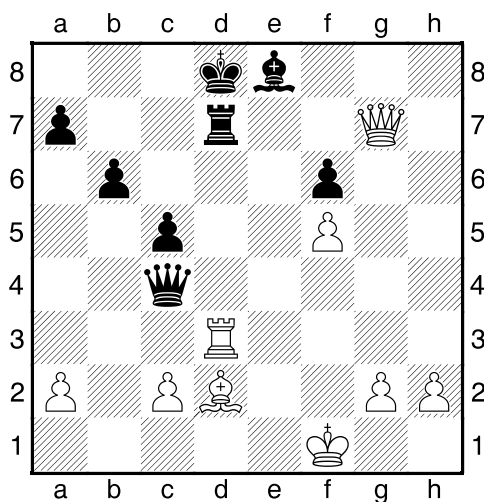
Černý na tahu



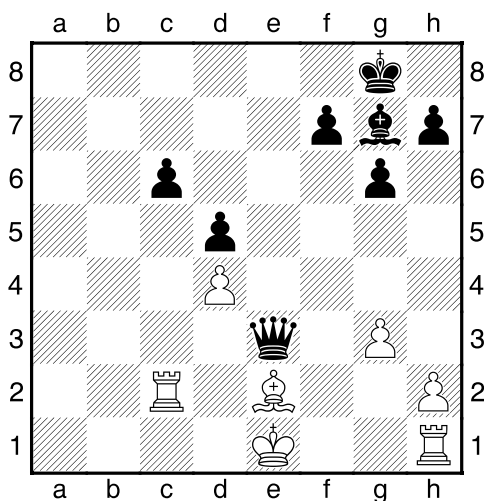
Černý na tahu



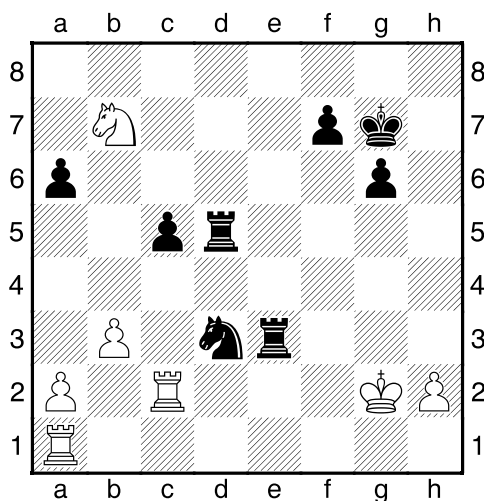
Černý na tahu



Černý na tahu



Černý na tahu

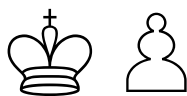


**My-Chess 26 (Lehké), 13.03.2023**

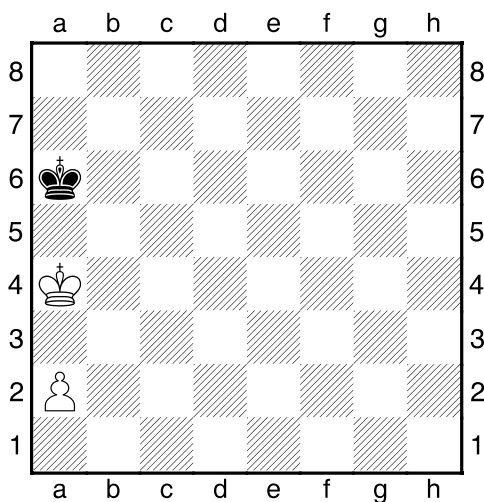
**Boj o kritická pole a,h**

(ŠK Biolek 007,4x)

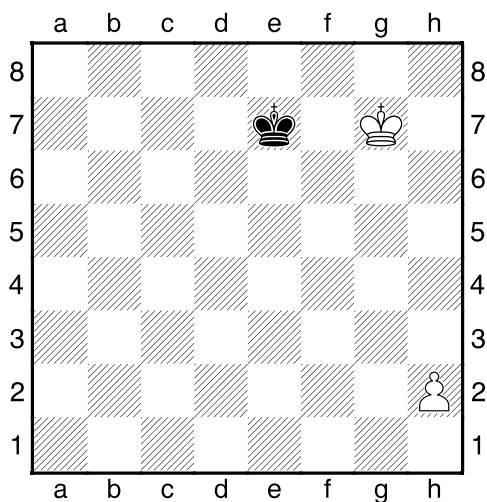
**!!! Pod každý diagram napište první tah a jak partie dopadne !!!**  
(navíc můžete v diagramech označit KP)  
**strana 3/3**



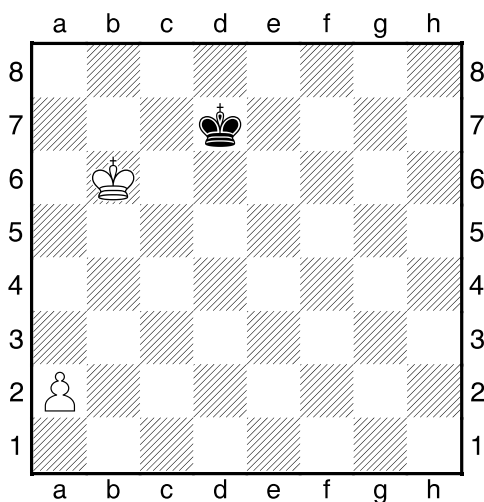
1. příklad Bílý na tahu



2. příklad Bílý na tahu



3. příklad Bílý na tahu



4. příklad Bílý na tahu

