



My Recharge



REVITALIZER
PLAN

COMPENSATION PLAN







WELCOME

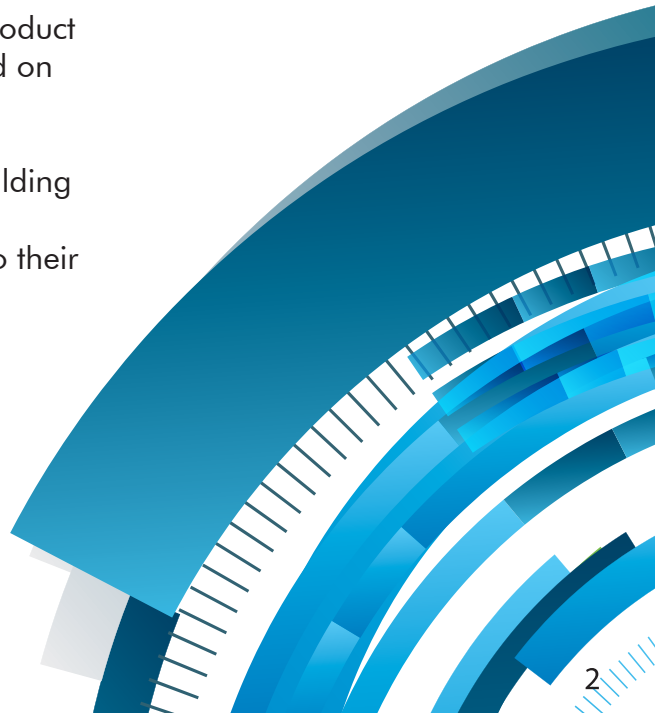
My Recharge Private Limited is a company with an Impeccable track record, backed by unparalleled expertise, a powerful vision, and a proven system. My Recharge offers legitimate services and potent herbal and wellness products bundled with powerful income plans ensuring your health, wealth and digital needs stay recharged! Always.

A system that has enabled lakhs of individuals across the country to attain financial freedom, a system that makes the digital India vision a reality, a system that empowers the rural and enables the urban.

My Recharge digital enables you to Recharge Mobile Connections, DTH Connections, Money Remittance, Electricity Bill Payment, Travel bookings, DTH Sales, Insurance Premium Payments, Online Shopping and more. All this in the comfort of your very own home and more importantly providing you with a substantial source of income.

My Recharge wellness offers an array of potent herbal and wellness products which will revitalize your physical and mental well being, also adding another powerful income source.

The success of any Distributor depends on the quantum of product or services sold through the business. You earn income based on the amount of sales generated by you and your extended business team. You may build your business at your own pace, although there are benefits to building your business as quickly as possible. The most successful Distributors focus on expanding their network while adding to their business base over time.





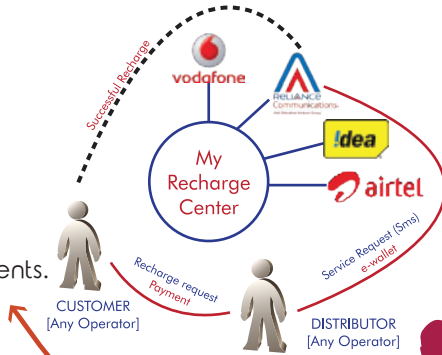
**MY RECHARGE
DIGITAL**

Or any other operator.



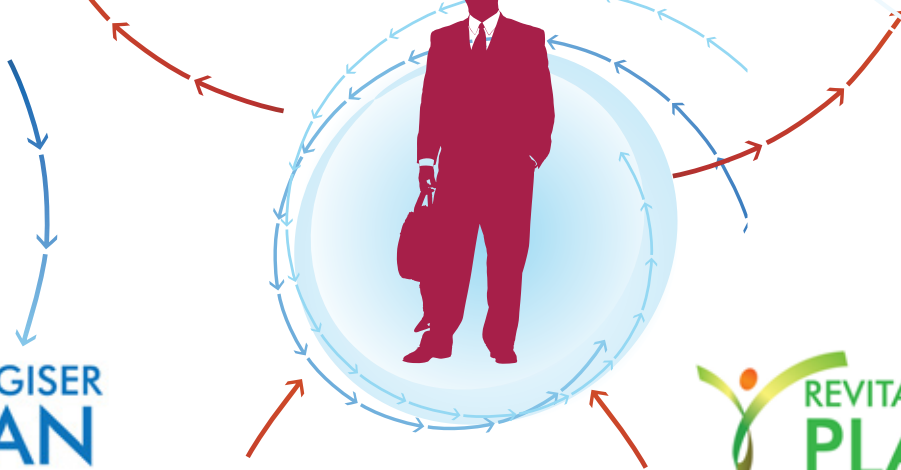
**MY RECHARGE
WELLNESS**

- Mobile Recharge
- Dth Recharge
- Money Remittance
- Electricity Bill Payment
- Travel Bookings
- DTH Sales
- Insurance Premium Payments.
- Online Shopping



- Wellness Product
Maangoal

- 6 Herbal Antioxidant Ingredients
- Supports Healthy Heart
- Good Fiber Source for gut health
- Helps in weight loss
- Anti Cancer properties
- Digestive Benefits, Healthy bones and teeth
- Increases blood circulation and Immunity.



- For all recharge services.
- Based on proven binary model.
- Daily pay out.
- Monthly commissions.
- E-Commerce and DMT included.



- For all wellness products distributions.
- Blend of accumulative and generation plans.
- 6 Income sources:

| | |
|-------------------|--------------------------|
| Retail Profit | Mentor Bonus |
| Performance Bonus | Leadership Royalty |
| Reward | Brand Ambassador Royalty |

1 RETAIL PROFIT

Purchasing a product at Distributor price and selling it to your customer at the Maximum Selling price, in turn making you a margin. This margin is Retail Profit.

EXAMPLE: Each unit of Maangoal has a distributor price of INR 1600/- and a MRP of INR 1800/-, thus a retail profit of INR 200/- is made on every unit sold. In addition you earn 1600 BV. The Retail Profit % stays within the bracket of 10% to 20%.

2 SALES PERFORMANCE BONUS

The Sales Performance Bonus is paid to a Rank achiever whose rank is a result of accumulative BV, applicable on the differential percentage of the bonus paid to the Rank achievers in his team whose ranks are less than that of their up line Rank achiever.

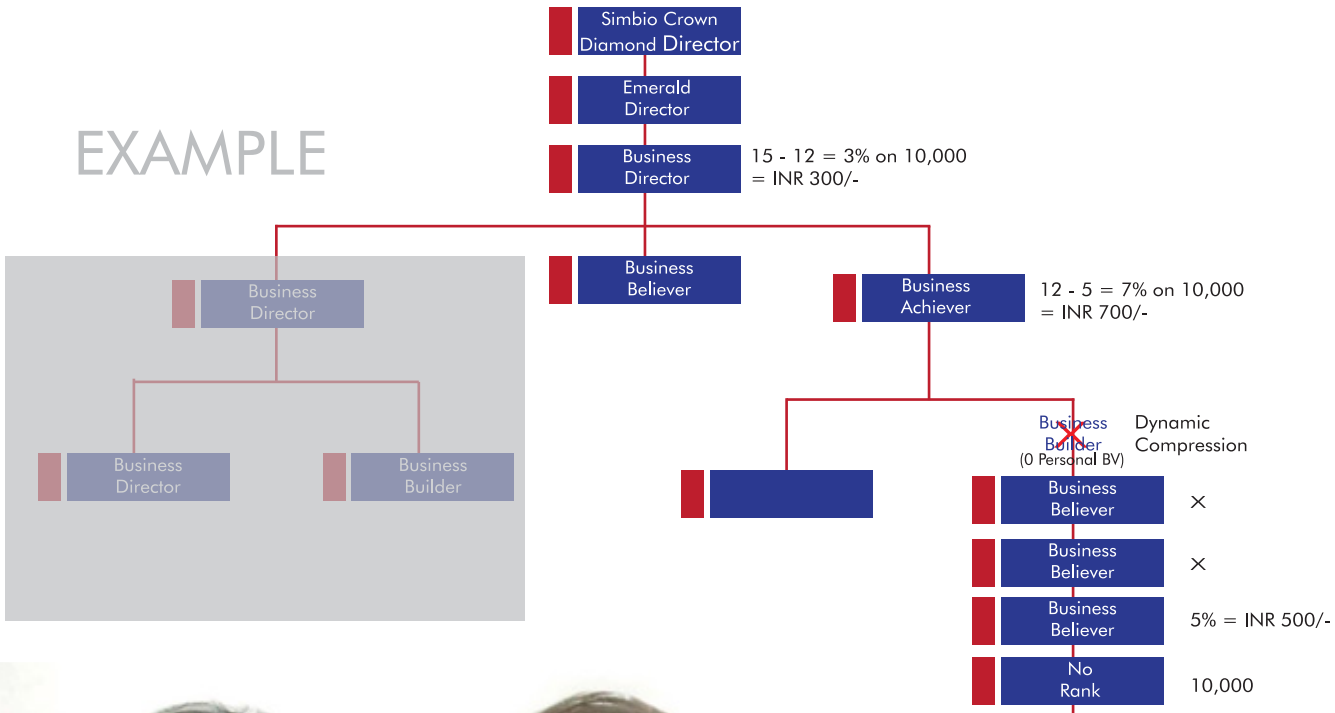
| RANK | ACCUMULATED GBV | % |
|-------------------------------|-----------------------------------|-----|
| Business Believer | 10,000 | 5% |
| Business Builder | 25,000 | 9% |
| Business Achiever | 75,000 | 12% |
| Business Director | 2,00,000 | 15% |
| Sapphire Director | (3) x Business Achievers | 18% |
| Emerald Director | (3) x Business Director Achievers | 21% |
| Ruby Director | (4) x Sapphire Director Achievers | 24% |
| Simbio Diamond Director | (4) x Emerald Director Achievers | 27% |
| Simbio Crown Diamond Director | (5) x Ruby Director Achievers | 30% |

Note:

- Not more than 50% volume from any one direct leg will be considered for rank qualification. However the commission will be paid on the total monthly GBV.
- A minimum of 1600 personal BV will have to be done to qualify for this Commission.
- Sapphire Director onwards, the 3 or 4 ranks required for qualification should be in unique legs.

INCOME STREAMS

EXAMPLE



Calculate this way.



INCOME STREAMS



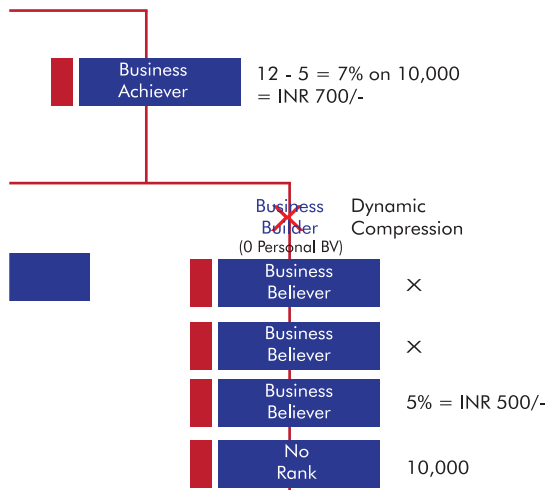
SPECIAL FEATURE:

The Dynamic Compression is a powerful, very fair pay out system in which if a Rank achiever is not eligible to earn commission for a particular month, then his otherwise payable Sales Performance Bonus for that month will be rolled up and paid to the next up line Rank achiever.

This system of compressing the unpaid volume and passing it to the up line Rank achiever is called **Dynamic Compression**.

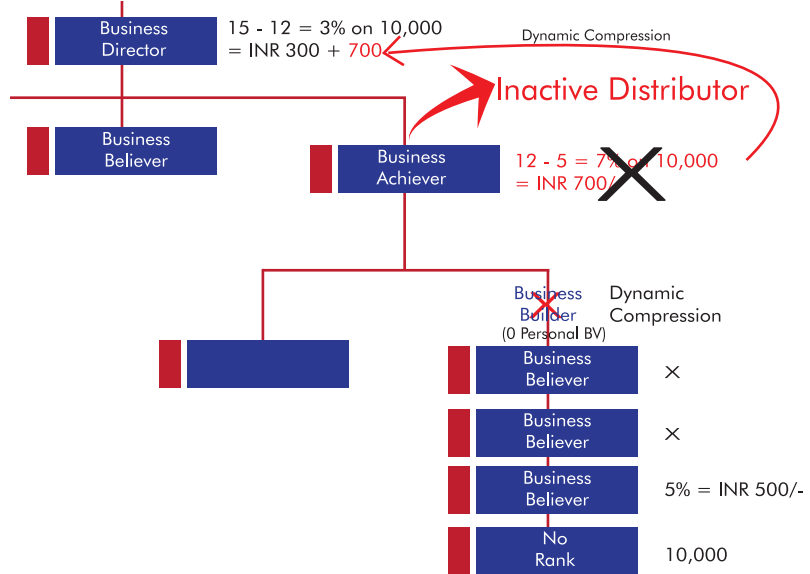
EXAMPLE -1

Absence of Eligible rank.



EXAMPLE -2

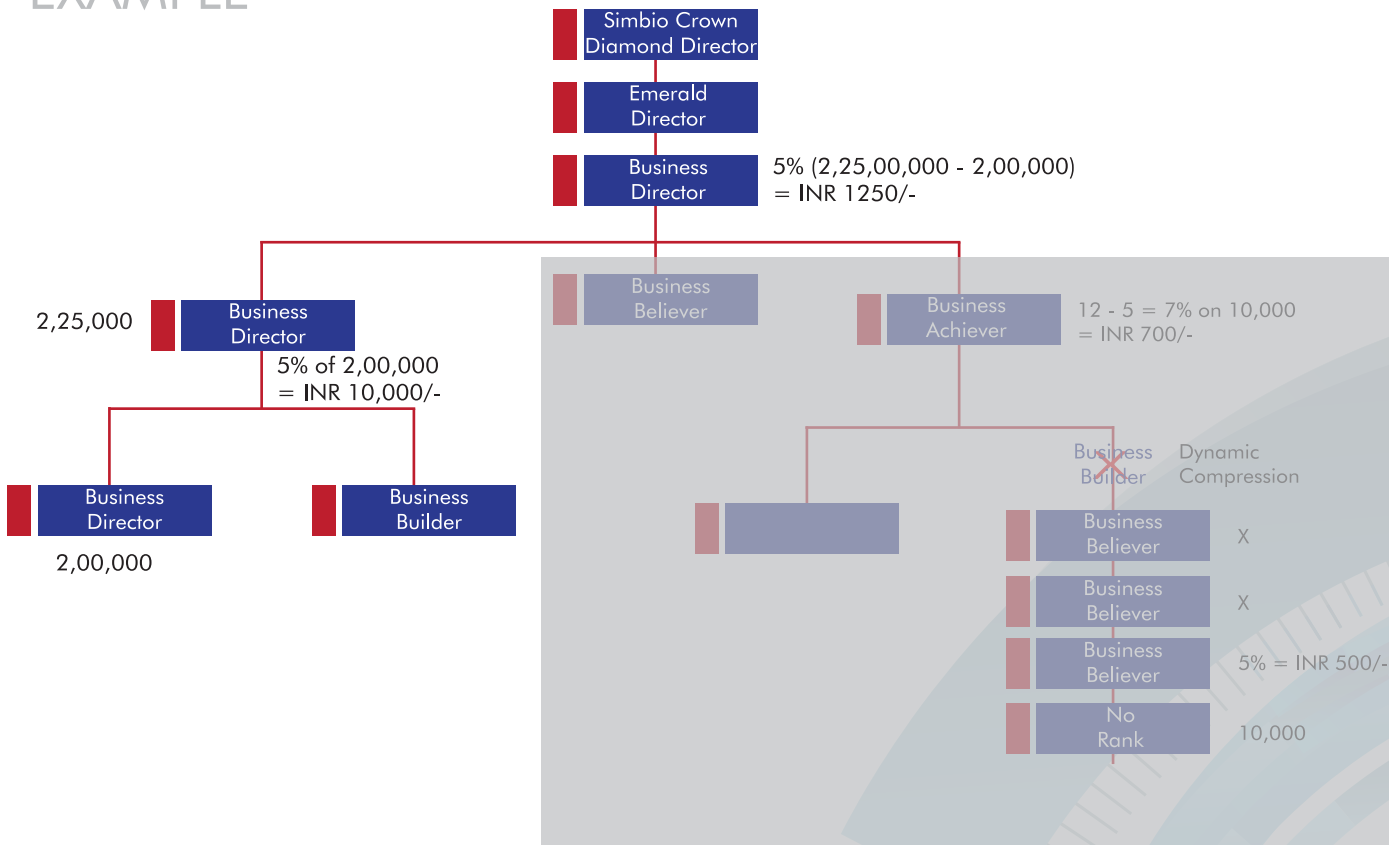
Payable Rank inactive/failure to do 1600 BV



3 MENTOR BONUS

The Mentor Bonus of fixed 5 % is paid to a Rank Achiever on the exclusive volume of his down line Rank achievers who are either of the same or above rank of their up line rank achiever. This Bonus is a recognition of the up line's support and guidance in helping develop leaders of his own/above rank within his team.

EXAMPLE



4 LEADERSHIP ROYALTY

Leadership Royalty Bonus is paid on the total company's monthly business volume. Sapphire Director to Simbio Crown Diamond Director distributors are eligible for this bonus. Their percentage is explained below:

| | |
|-------------------------------|------|
| Sapphire Director | 3% |
| Emerald Director | 2.5% |
| Ruby Director | 2% |
| Simbio Diamond Director | 1.5% |
| Simbio Crown Diamond Director | 1% |





REVITALIZER PLAN



A unique blend of **accumulative and generation plan**, specially designed for all wellness products segment.

Accumulative plan feature ensures every volume point of business is utilized for rank advancement and growth. Once a rank is achieved the distributor will be paid as per the rank eligibility throughout the tenure.

Generation plan feature ensures long term stability, smooth progression and push-pull synergy between up-line and down-line.

At My Recharge once a distributor qualifies as a particular rank his/her top achieved rank will be considered for all future commissions.

INCOME STREAMS

- Retail Profit
- Sales Performance Bonus
- Mentor Bonus
- Leadership Royalty
- Rewards
- Brand Ambassador Royalty



INCOME STREAMS



EXAMPLE

Leadership bonus example: Suppose the total business volume done by the company in a Particular month is 1 Crore GBV, and let's assume that there are only 3 Sapphire Director Distributors in the network. A, B & C.

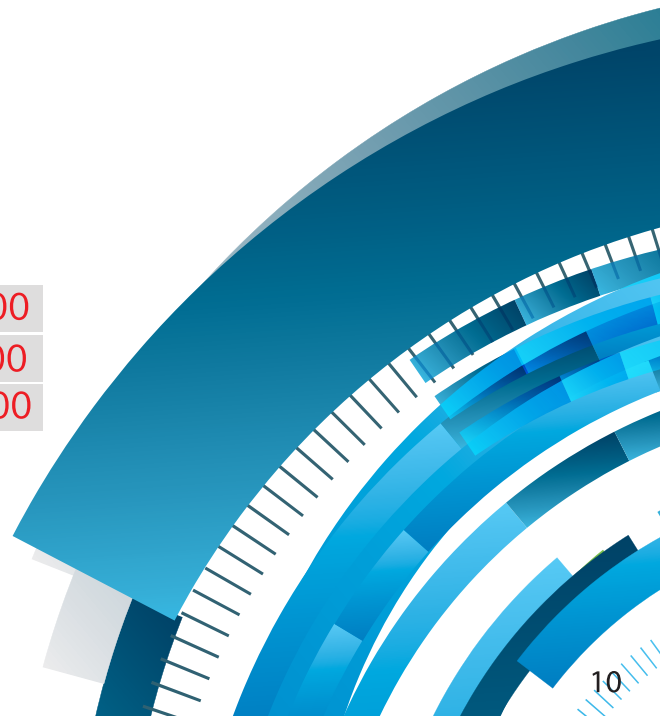
$$\left. \begin{array}{l} \text{A's Contribution(Total) GBV} = 5 \text{ Lakhs} \\ \text{B's Contribution(Total) GBV} = 8 \text{ Lakhs} \\ \text{C's Contribution(Total) GBV} = 12 \text{ Lakhs} \end{array} \right\} \text{TOTAL BONUS POOL} = 3\% \text{ of } 1 \text{ Crore} = 3 \text{ Lakhs}$$

Hence 3 Lakhs, will be distributed among A,B &C in a Proportionate manner. This is as follows:

$$\frac{3 \text{ Lakhs}}{A+B+C} = \frac{3 \text{ Lakhs}}{25 \text{ Lakhs}} = .12$$

This score is then multiplied by total individual Contributions and we arrive at our bonus amount.

| | |
|----------------------|-----------------------------------|
| A Total GBV 5 Lakhs | $.12 \times 5,00,000 = 60,000$ |
| B Total GBV 8 Lakhs | $.12 \times 8,00,000 = 96,000$ |
| C Total GBV 12 Lakhs | $.12 \times 12,00,000 = 1,44,000$ |



5 REWARDS

My Recharge offers an array of rewards to its distributors based on their BV achievements within the specified time limit.

REWARDS QUALIFICATION

| S.No. | Award | PIN | Time limit | Target BV | Maximum BV from one leg |
|-------|---|-----------------------------|---------------|-------------|-------------------------|
| 1 | Special Training Kit | Executive | 10 days | 16000 | 8000 |
| 2 | Rs. 1000 Topup in E-Wallet | Blue Executive | NEXT 25 days | 38400 | 19200 |
| 3 | Branded Mixer Grinder worth Rs 2000 | Silver Executive | next 40 days | 1.28 Lacs | 64000 |
| 4 | Branded Smart phone worth Rs 8000 | Business Executive | next 60 days | 3.2 lacs | 1.6 lacs |
| 5 | Branded Laptop worth Rs. 20000 | Sales Coordinator | next 75 days | 6.4 lacs | 3.2 lacs |
| 6 | 100 CC Bike worth Rs 40000 | Team Coordinator | next 90 days | 16 lacs | 8 lacs |
| 7 | Leading Brand LED TV 50" Full HD worth Rs 70000 | Regional Coordinator | next 135 days | 80 lacs | 40 lacs |
| 8 | Foreign Trip to Europe worth Rs 1 lac | Business Coordinator | No time limit | 1.92 crores | 64 lacs |
| 9 | Maruti Alto Car | Regional Manager | No time limit | 3.2 crores | 80 lacs |
| 10 | Swift Dzire Car | Zonal Manager | No time limit | 12 crores | 2.4 crores |
| 11 | Honda City Car | Business Manager | No time limit | 20.8 crores | 4.16 crores |
| 12 | Mercedes Benz C Class Car worth Rs 25 lacs | Premier Director | No time limit | 28.8 crores | 4.8 crores |
| 13 | Audi Sedan Car worth Rs 50 lacs | Elite Director | No time limit | 38.4 crores | 6.4 crores |
| 14 | Jaguar Car F-Type worth Rs 1.25 crores | Crown Director | No time limit | 80 crores | 10 crores |
| 15 | Dream House worth 2 crores | Business Director | No time limit | 160 crores | 16 crores |



INCOME STREAMS



Each reward is exclusive - reward, period and BV wise.

If a distributor qualifies/fails to qualify for a reward within the defined period, he gets upgraded to qualify for the next reward.

If a distributor has qualified for a particular Reward in less number of days than prescribed, he will gain the remaining days of the qualified reward period to qualify for the next reward.

For the distributors who join after the Reward announcement date, their qualification starts from their respective date of joining.

The variants of the car models are as per company's discretion.

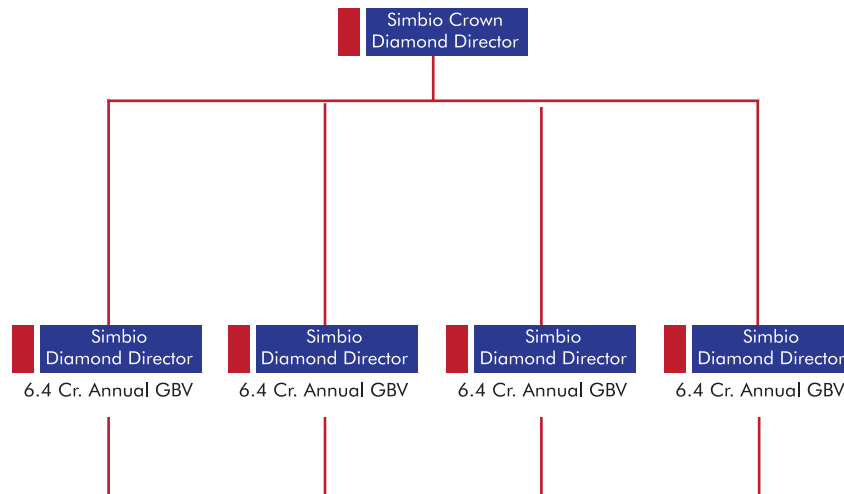


6 BRAND AMBASSADOR ROYALTY:

The top two ranks (Simbio Diamond Director and Simbio Crown Diamond Director) if any, will earn a brand royalty of 1% each on the total company turnover in a particular financial year. That is 1% distributed among all Simbio Diamond Directors and 1% among all Simbio Crown Diamond Directors.

EXAMPLE

1% of the total company turnover in a particular financial year will be distributed among all eligible Simbio Crown Diamond Directors.



1% of the total company turnover in a particular financial year will be distributed among all eligible Simbio Diamond Directors

During a particular financial year Simbio Diamond Directors should hit 6.4 Cr GBV to qualify.

During a particular financial year Simbio Crown Diamond Directors should have 4 Simbio Diamond Directors in 4 unique legs.

The Brand Ambassador will be the chief guest for all My Recharge Seminars in the upcoming year.

The Simbio Diamond Directors's success and king size lifestyle will be video documented.

The Brand Ambassadors will have Six fully sponsored Seminars from My Recharge Pvt Ltd.

CREDIBILITY



My Recharge Pvt Ltd is a member of **FDSA** (Federation of Direct Selling Association) and also is Appointed by **NSDC** (National Skill Development Corporation) as an Approved Training Partner.



An ISO Certified Company.



All Domestic Money Transfer falls under the purview of **NPCI**, **IMPS** and supervision of **RBI**.
Technology partner **M Rupee**

CONTACT US



My Recharge Pvt Ltd
206A, Pushp Enclave, Sec. 5, Pratap Nagar, Sanganer,
Jaipur-302033
www.myrecharge.co.in
admin@myrecharge.co.in

Help line 0141 - 7101777, 0141 -5158777
Travel Help line 01415158989
Health & wellness products 01415158999

Follow us on:

Facebook= <https://www.facebook.com/Myrecharge>

Twitter = <https://twitter.com/MyRechargep>

Youtube= <https://www.youtube.com/user/MRecharge/videos>

Instagram= <https://www.instagram.com/myrechargep/>

Please visit www.myrecharge.co.in before starting the business, for complete and updated set of terms and conditions.