

Map of
Butterfield Overland Mail
Route thru Missouri

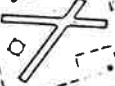
This is old Boonville Road
later called The Wire Road
and is closely related to an
Indian trail existing before
White men came into the country.
Daniel Boone's sons had a salt works
on this trail just north of Missouri
River in 1807.

This old Indian trail was one
that skirted the White River. A good
and fish route also shade and wild fruit



SPRINGFIELD
POP. 10731

Ashmore



SUNNYVALE
RABBIT HOLE
MILL TOWN

RABBIT HOLE
POP. 1000

MILL TOWN

WALL TOWN



Ashmores

CHRISTIAN STONE



Handwritten notes: "Handwritten notes" and "MADISONVILLE" are visible in the lower right quadrant of the map.



CHRISTIAN STONE

*Thick Ridge
R. W. C. R.*

STONE

Sp

J.I. Smith's Sta.

*J.I. Smith's
Spring*

MANTONVILLE

Wheeler

MANTONVILLE
POP. 21

Wheeler

Wheeler

Wheeler

Wheeler

Wheeler

Wheeler

Wheeler

Wheeler

Wheeler

Wheeler

Wheeler

Wheeler

Wheeler

STONE



CRANE

Stone

J.I. Smith's Sta.

Blaine

Blaine

Stone River

State Route 20

Stone Reservoir

Stone

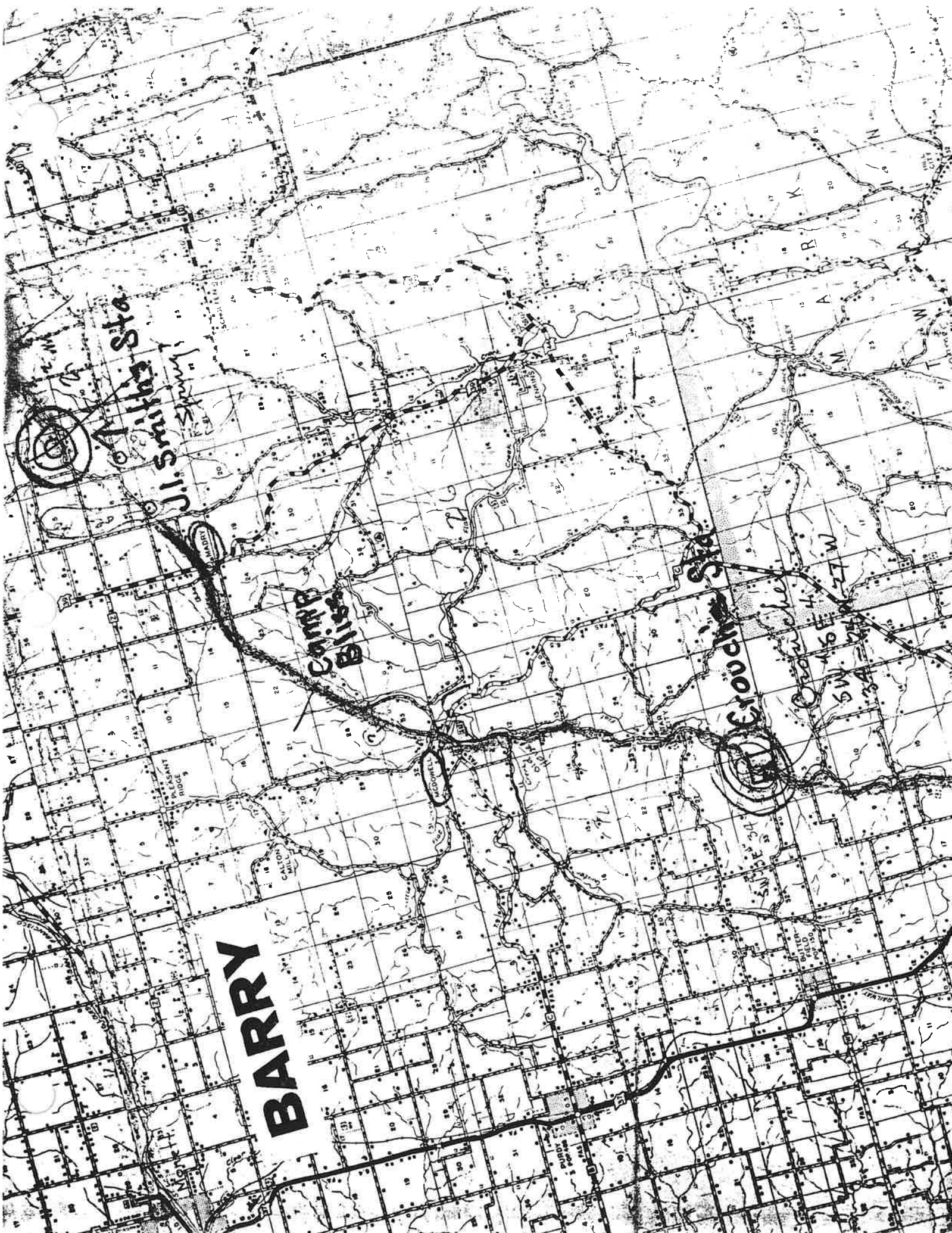
BARRY

Milby Sta.
J. Smith's Spring

Camp Bliss

Erouvelle Sta.

SW 46 E 4-27 W
SW 34 E 4-27 W





Croucher Sta

SW 1/4 E 4 N 27 W

CASSVILLE
POP 184

Harbings Sta

SW 1/4 E 4 N 27 W

SW 1/4 E 4 N 27 W

SW 1/4 E 4 N 27 W

SW 1/4 E 4 N 27 W

SW 1/4 E 4 N 27 W

SW 1/4 E 4 N 27 W

SW 1/4 E 4 N 27 W

SW 1/4 E 4 N 27 W

SW 1/4 E 4 N 27 W

SW 1/4 E 4 N 27 W

SW 1/4 E 4 N 27 W

SW 1/4 E 4 N 27 W

SW 1/4 E 4 N 27 W

SW 1/4 E 4 N 27 W

SW 1/4 E 4 N 27 W

SW 1/4 E 4 N 27 W

SW 1/4 E 4 N 27 W

SW 1/4 E 4 N 27 W

SW 1/4 E 4 N 27 W

SW 1/4 E 4 N 27 W

SW 1/4 E 4 N 27 W

SW 1/4 E 4 N 27 W

SW 1/4 E 4 N 27 W

SW 1/4 E 4 N 27 W

SW 1/4 E 4 N 27 W

SW 1/4 E 4 N 27 W

SW 1/4 E 4 N 27 W

SW 1/4 E 4 N 27 W

SW 1/4 E 4 N 27 W

SW 1/4 E 4 N 27 W

SW 1/4 E 4 N 27 W

SW 1/4 E 4 N 27 W

SW 1/4 E 4 N 27 W

SW 1/4 E 4 N 27 W

SW 1/4 E 4 N 27 W

SW 1/4 E 4 N 27 W

SW 1/4 E 4 N 27 W

SW 1/4 E 4 N 27 W

SW 1/4 E 4 N 27 W

SW 1/4 E 4 N 27 W

SW 1/4 E 4 N 27 W

SW 1/4 E 4 N 27 W

SW 1/4 E 4 N 27 W

SW 1/4 E 4 N 27 W

SW 1/4 E 4 N 27 W

SW 1/4 E 4 N 27 W

SW 1/4 E 4 N 27 W

SW 1/4 E 4 N 27 W

SW 1/4 E 4 N 27 W

SW 1/4 E 4 N 27 W

SW 1/4 E 4 N 27 W

SW 1/4 E 4 N 27 W

SW 1/4 E 4 N 27 W

SW 1/4 E 4 N 27 W

SW 1/4 E 4 N 27 W

SW 1/4 E 4 N 27 W

SW 1/4 E 4 N 27 W

SW 1/4 E 4 N 27 W

SW 1/4 E 4 N 27 W

SW 1/4 E 4 N 27 W

SW 1/4 E 4 N 27 W

SW 1/4 E 4 N 27 W

SW 1/4 E 4 N 27 W

SW 1/4 E 4 N 27 W

SW 1/4 E 4 N 27 W

SW 1/4 E 4 N 27 W

SW 1/4 E 4 N 27 W

SW 1/4 E 4 N 27 W

SW 1/4 E 4 N 27 W

SW 1/4 E 4 N 27 W

SW 1/4 E 4 N 27 W

SW 1/4 E 4 N 27 W

SW 1/4 E 4 N 27 W

SW 1/4 E 4 N 27 W

SW 1/4 E 4 N 27 W

SW 1/4 E 4 N 27 W

SW 1/4 E 4 N 27 W

SW 1/4 E 4 N 27 W

SW 1/4 E 4 N 27 W

SW 1/4 E 4 N 27 W

SW 1/4 E 4 N 27 W

SW 1/4 E 4 N 27 W

SW 1/4 E 4 N 27 W

SW 1/4 E 4 N 27 W

SW 1/4 E 4 N 27 W

SW 1/4 E 4 N 27 W

SW 1/4 E 4 N 27 W

SW 1/4 E 4 N 27 W

SW 1/4 E 4 N 27 W

SW 1/4 E 4 N 27 W

SW 1/4 E 4 N 27 W

SW 1/4 E 4 N 27 W

SW 1/4 E 4 N 27 W

SW 1/4 E 4 N 27 W

SW 1/4 E 4 N 27 W

SW 1/4 E 4 N 27 W

SW 1/4 E 4 N 27 W

SW 1/4 E 4 N 27 W

SW 1/4 E 4 N 27 W

SW 1/4 E 4 N 27 W

SW 1/4 E 4 N 27 W

SW 1/4 E 4 N 27 W

SW 1/4 E 4 N 27 W

SW 1/4 E 4 N 27 W

SW 1/4 E 4 N 27 W

SW 1/4 E 4 N 27 W

SW 1/4 E 4 N 27 W

SW 1/4 E 4 N 27 W

SW 1/4 E 4 N 27 W

SW 1/4 E 4 N 27 W

SW 1/4 E 4 N 27 W

SW 1/4 E 4 N 27 W

SW 1/4 E 4 N 27 W

SW 1/4 E 4 N 27 W

SW 1/4 E 4 N 27 W

SW 1/4 E 4 N 27 W

SW 1/4 E 4 N 27 W

SW 1/4 E 4 N 27 W

SW 1/4 E 4 N 27 W

SW 1/4 E 4 N 27 W

SW 1/4 E 4 N 27 W

SW 1/4 E 4 N 27 W

SW 1/4 E 4 N 27 W

SW 1/4 E 4 N 27 W

SW 1/4 E 4 N 27 W

SW 1/4 E 4 N 27 W

SW 1/4 E 4 N 27 W

SW 1/4 E 4 N 27 W

SW 1/4 E 4 N 27 W

SW 1/4 E 4 N 27 W

SW 1/4 E 4 N 27 W

SW 1/4 E 4 N 27 W

SW 1/4 E 4 N 27 W

SW 1/4 E 4 N 27 W

SW 1/4 E 4 N 27 W

SW 1/4 E 4 N 27 W

SW 1/4 E 4 N 27 W

SW 1/4 E 4 N 27 W

SW 1/4 E 4 N 27 W

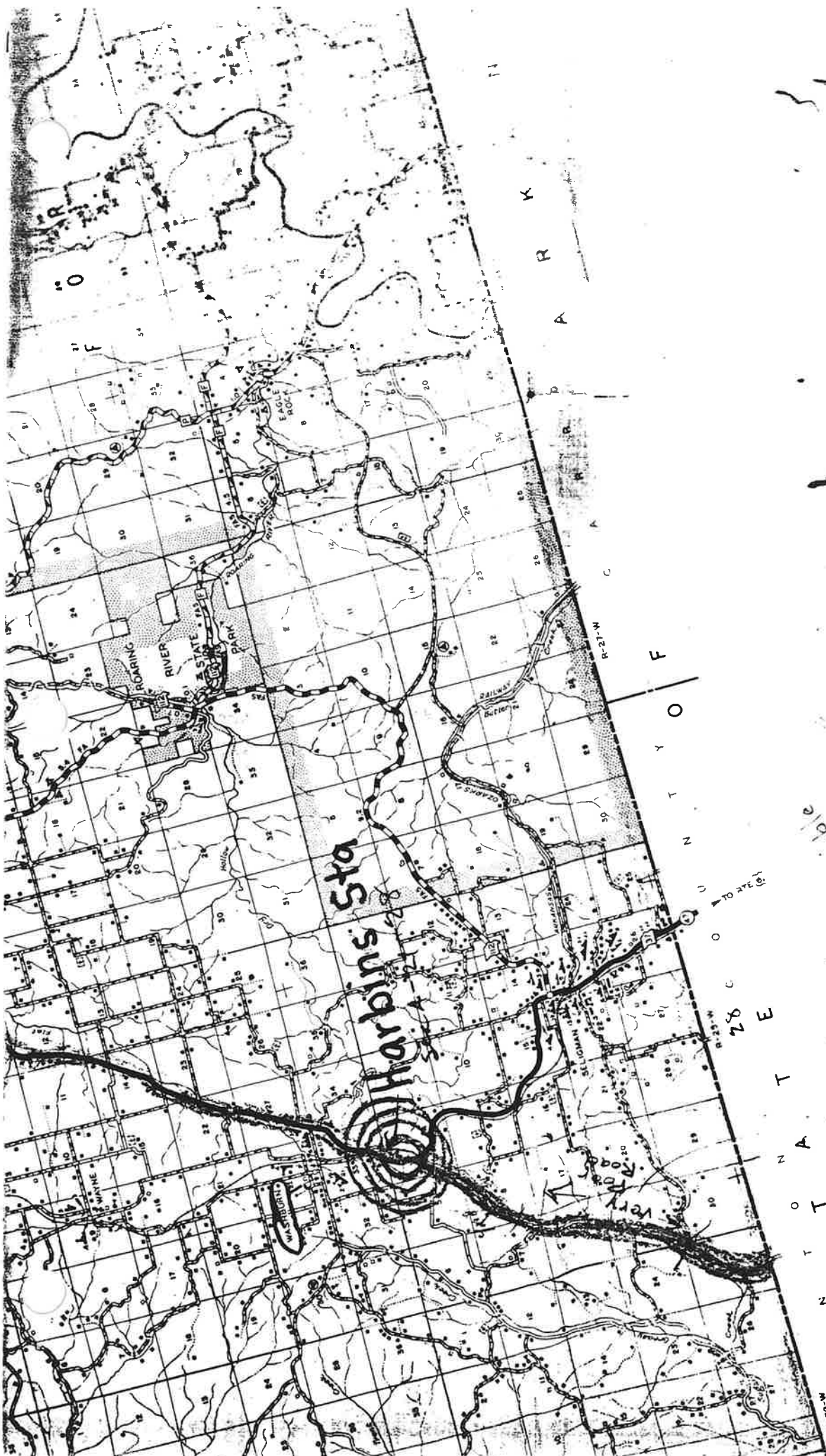
SW 1/4 E 4 N 27 W

SW 1/4 E 4 N 27 W

SW 1/4 E 4 N 27 W

SW 1/4 E 4 N 27 W

SW 1/4 E 4 N 27 W



Keep off
 South only possible
 Cant return north
 South banks are on north.

W 28° W R-28-W
 B E N T O A T E C O U N T Y O F
 R 23° W R-23-W
 28 C O U N T Y O F

