

386

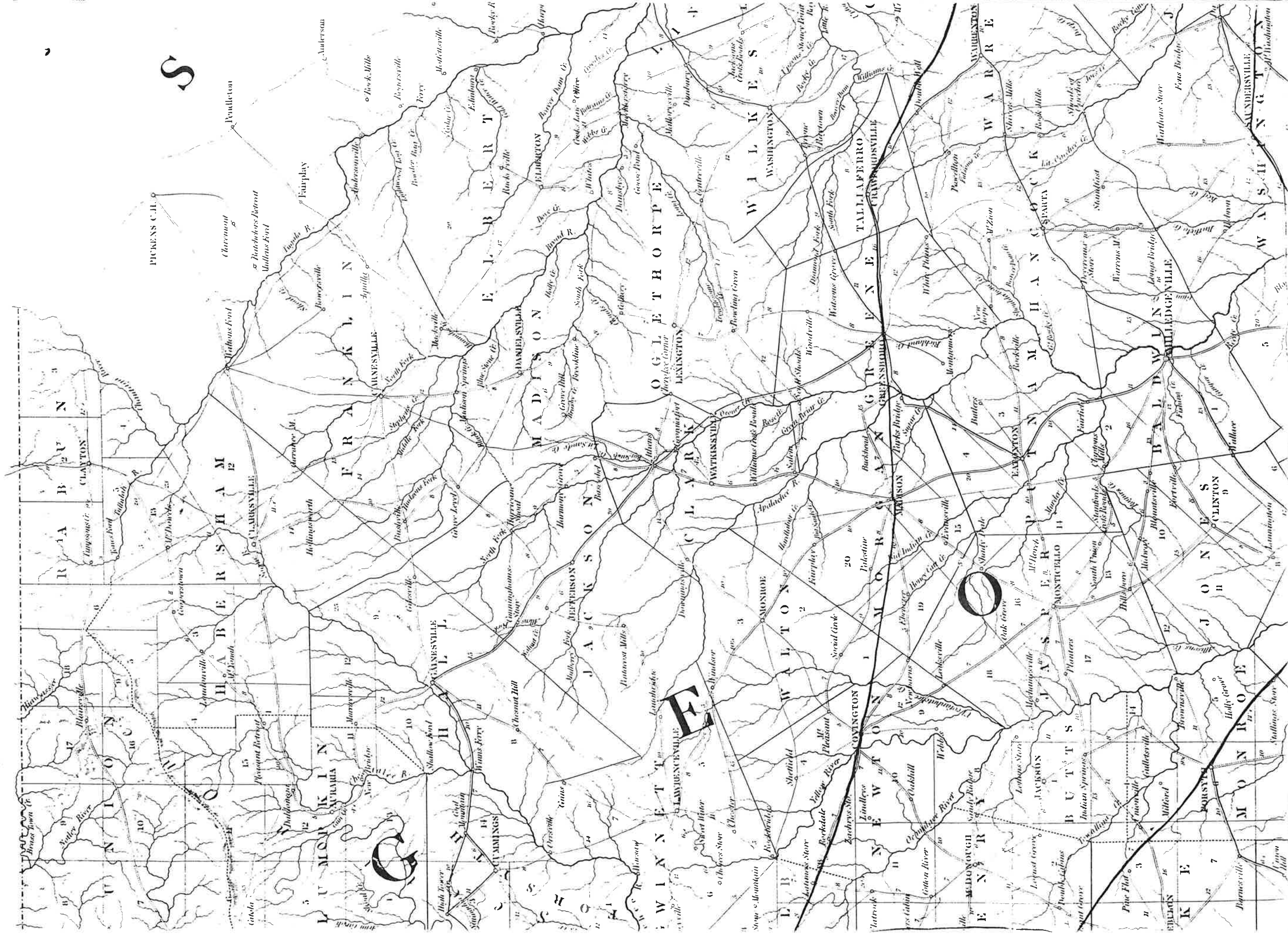
Georgia & Alabama

1839

1 :630,000

David H. Burr

E E



S

O

Map of

GEORGIA & AL

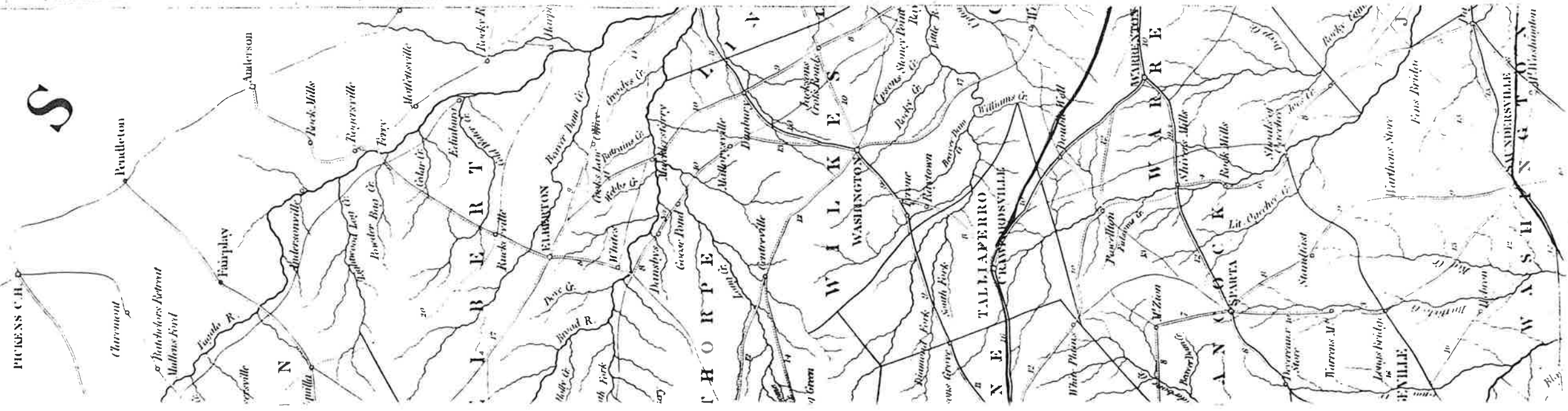
Exhibiting the Post Offices, Post Roads, Canal BY S. M. S.

(Late Topographer to the Post
Geographer to the House of Represent

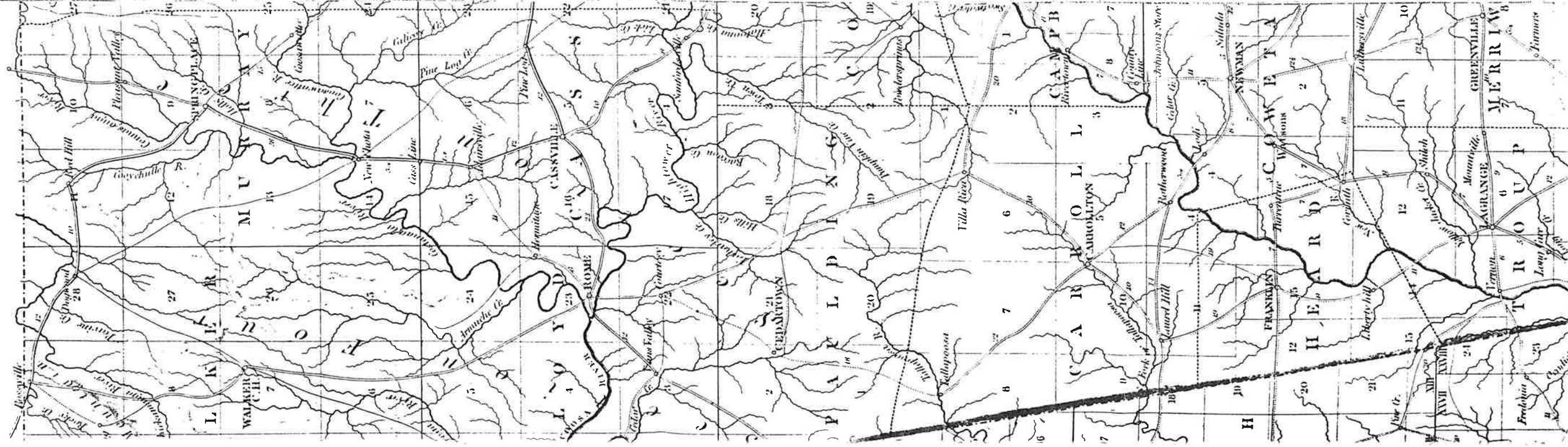


- 4 Horse
- 2 D^o
- 1 D^o

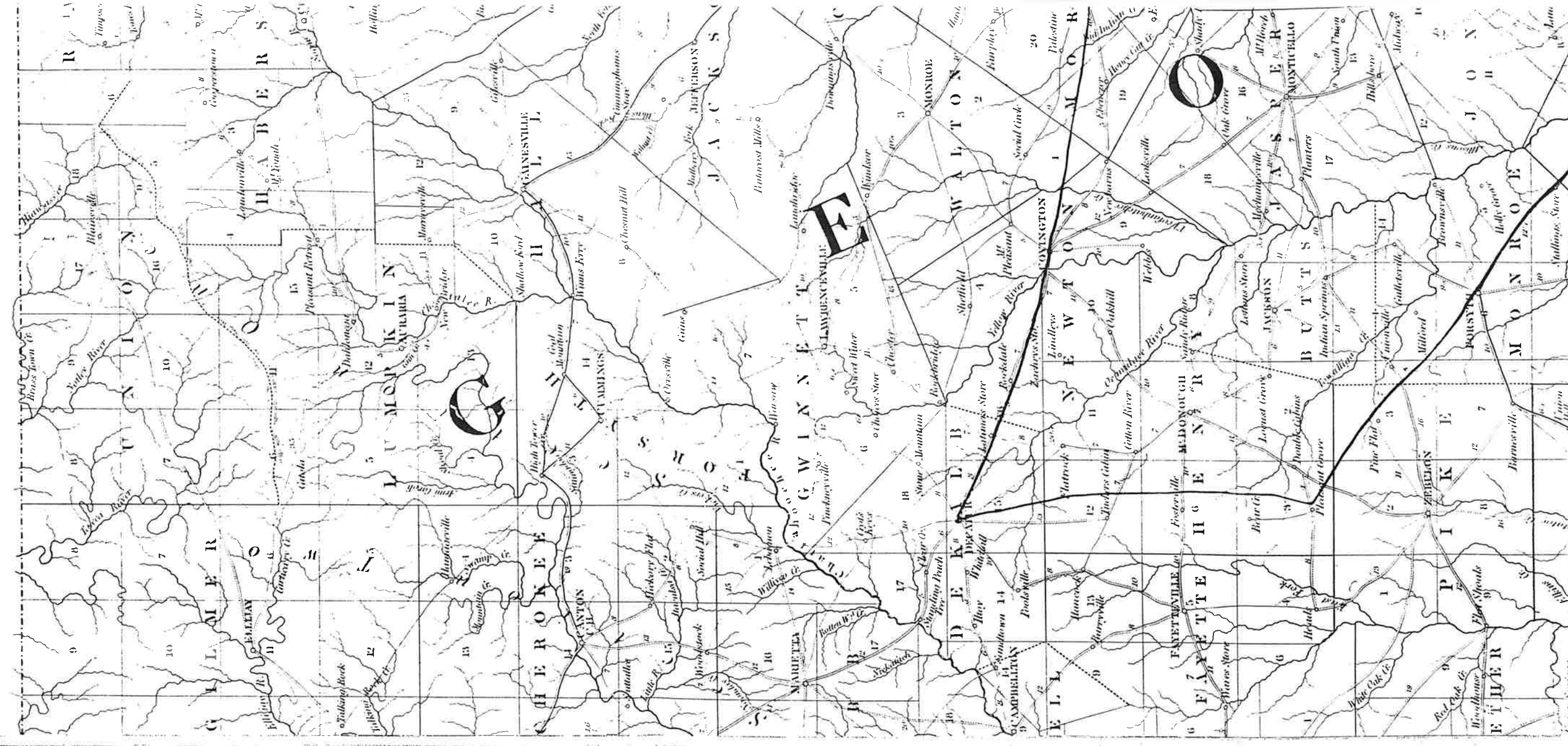
C A R R O

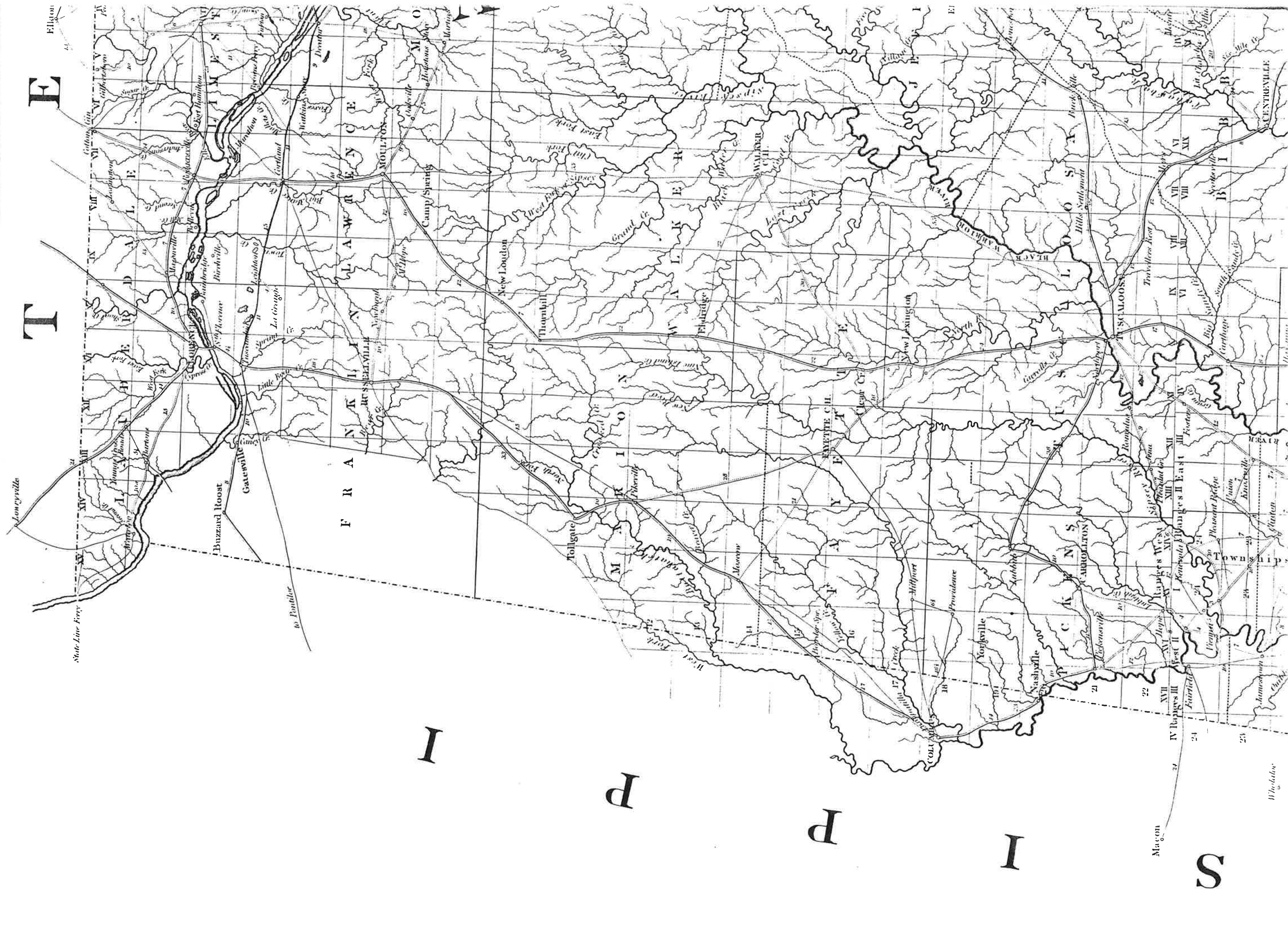


S S



E E





T
T
T

F
R
A
N
K
L
I
N

L
A
W
R
E
N
C
E

I
P
I

P

I

S

Lancysville

State Line Ferry

Buzsard Hoost

Gatesville

FRANKLIN

LAWRENCE

Wilkes

Tollgate

Masson

Hillport

New Lexington

Nashville

Union

Wilcox

Macon

Whitaker

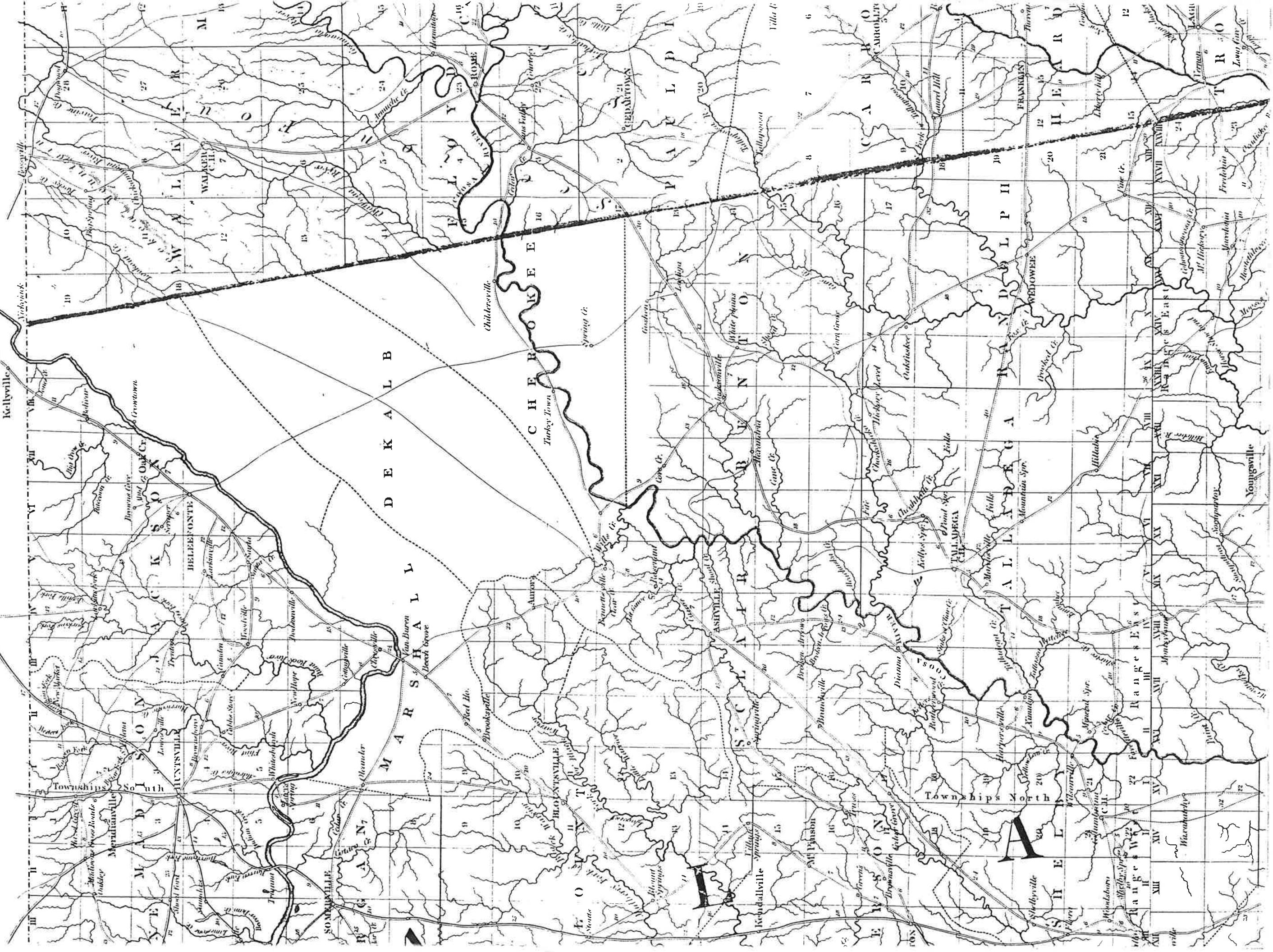
N

N

E

S

Salem, Kellyville, Jasper



SOMEVILLE
MAYNARD
MUNTSVILLE
SOUTH
MENDOTA

HOENTVILLE
TOWNSHIPS NORTH

ASHVILLE
TOWNSHIPS NORTH

DEKALB
TOWNSHIPS NORTH

CHERRYVILLE
TOWNSHIPS NORTH

PAUL
TOWNSHIPS NORTH

FRANKLIN
TOWNSHIPS NORTH

WELLSVILLE
TOWNSHIPS NORTH

WEDOWEE
TOWNSHIPS NORTH

FRANKLIN
TOWNSHIPS NORTH

FRANKLIN
TOWNSHIPS NORTH

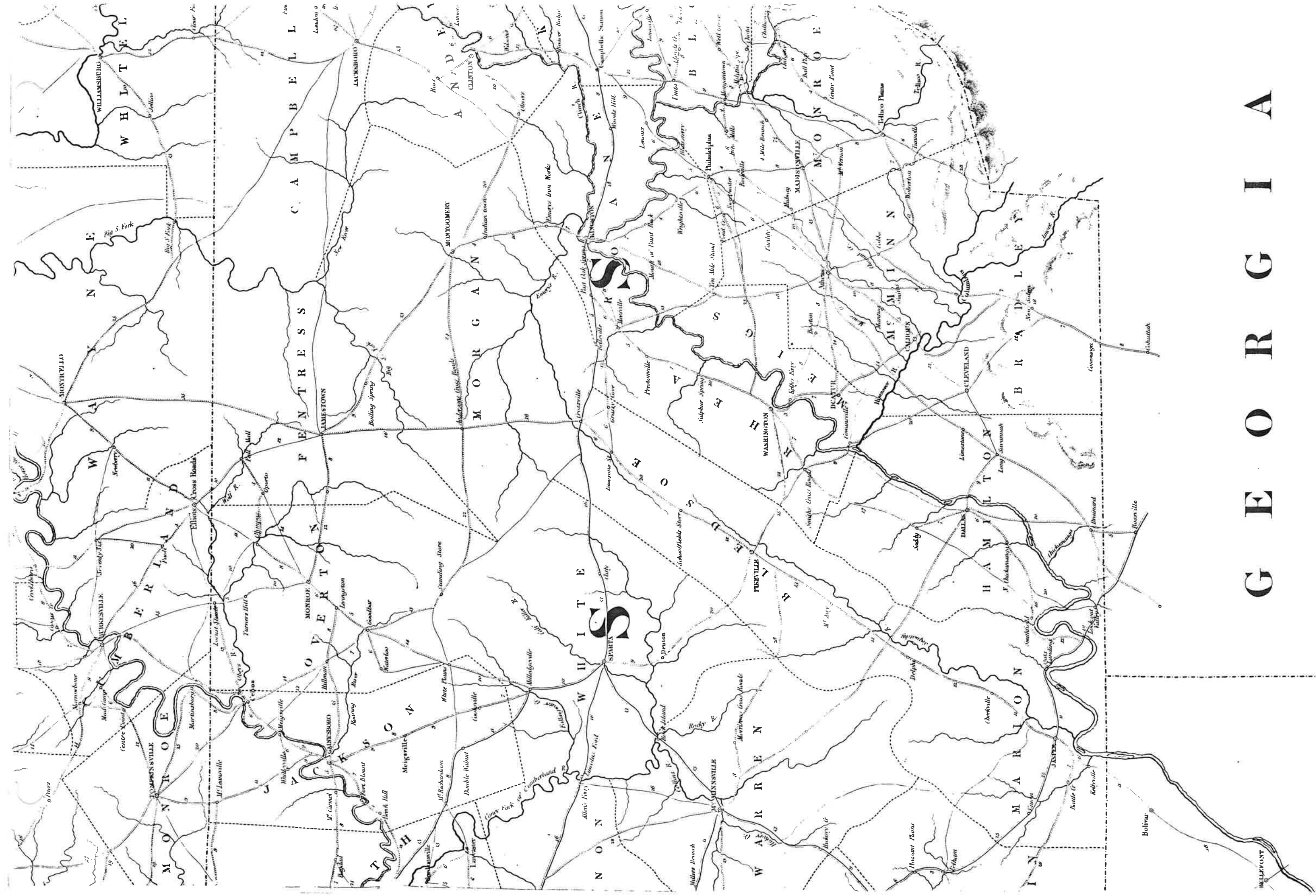
FRANKLIN
TOWNSHIPS NORTH

FRANKLIN
TOWNSHIPS NORTH

FRANKLIN
TOWNSHIPS NORTH

FRANKLIN
TOWNSHIPS NORTH

FRANKLIN
TOWNSHIPS NORTH



GEORGIA

DELFTON