

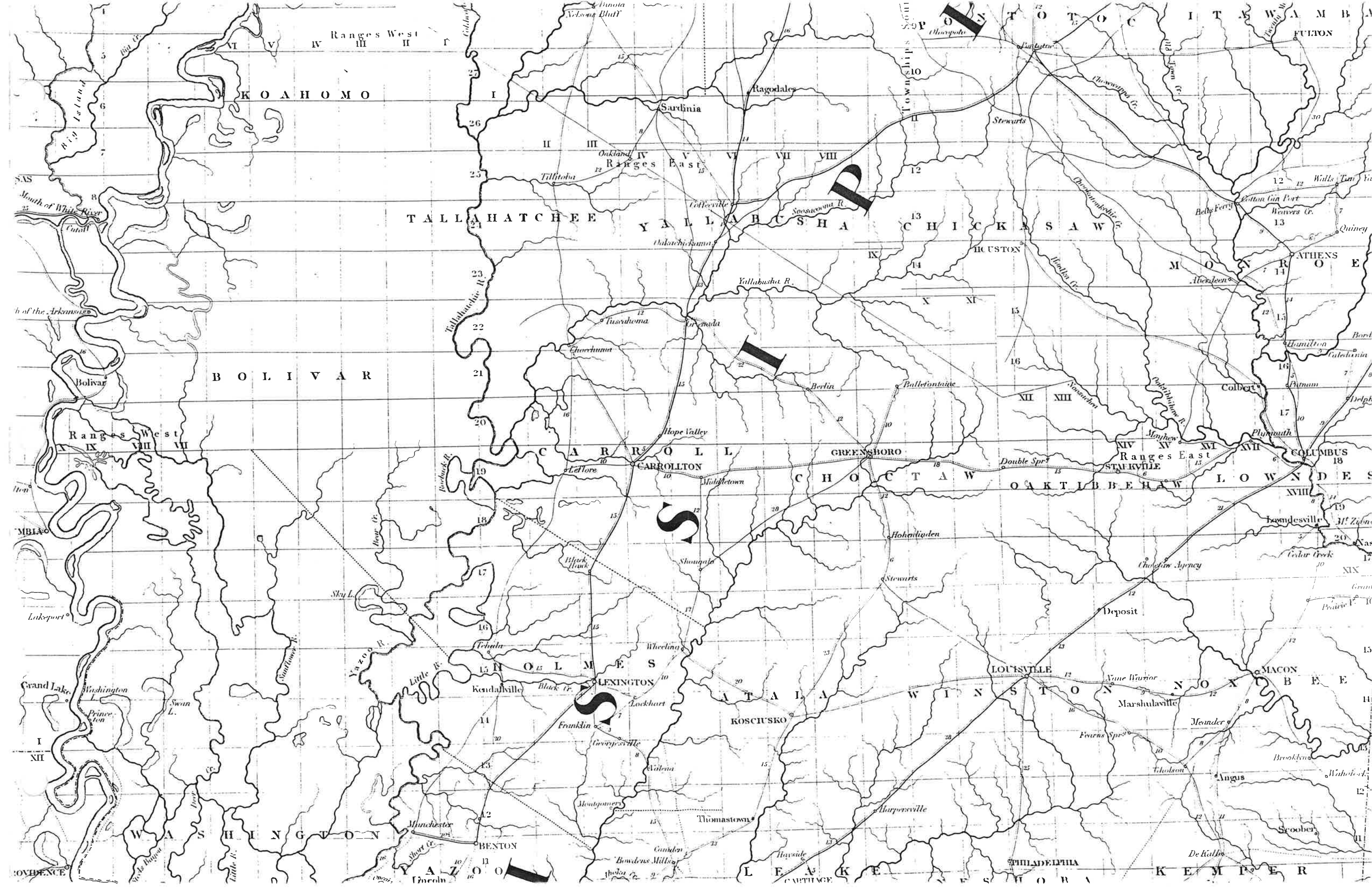
\* 359

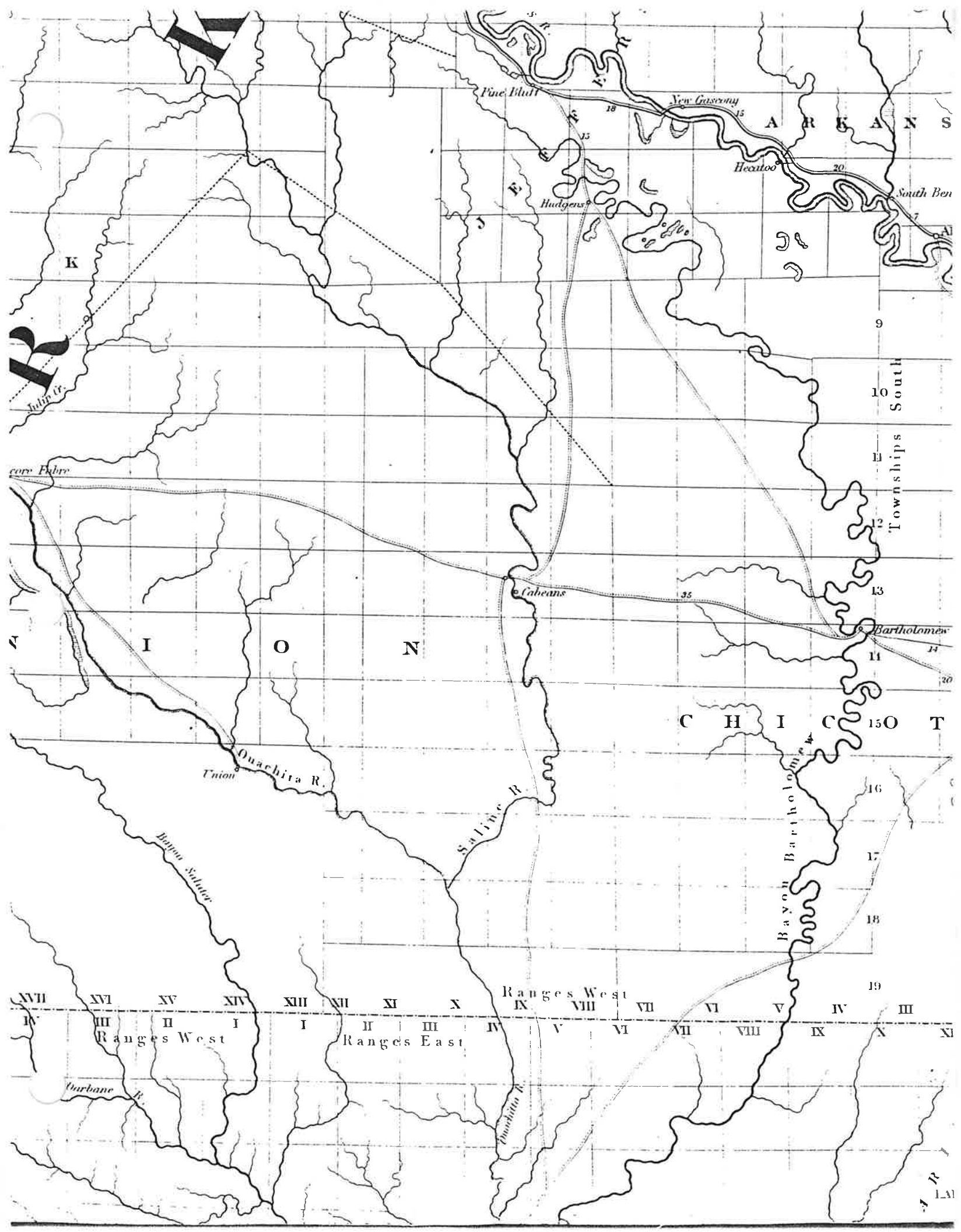
Mississippi, Louisiana & Arkansas

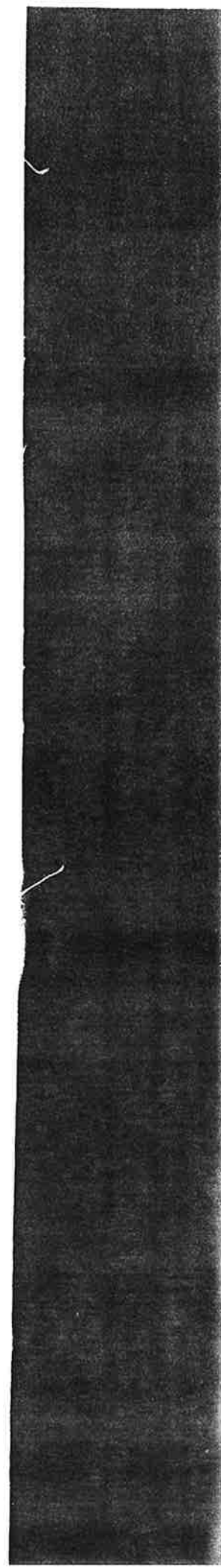
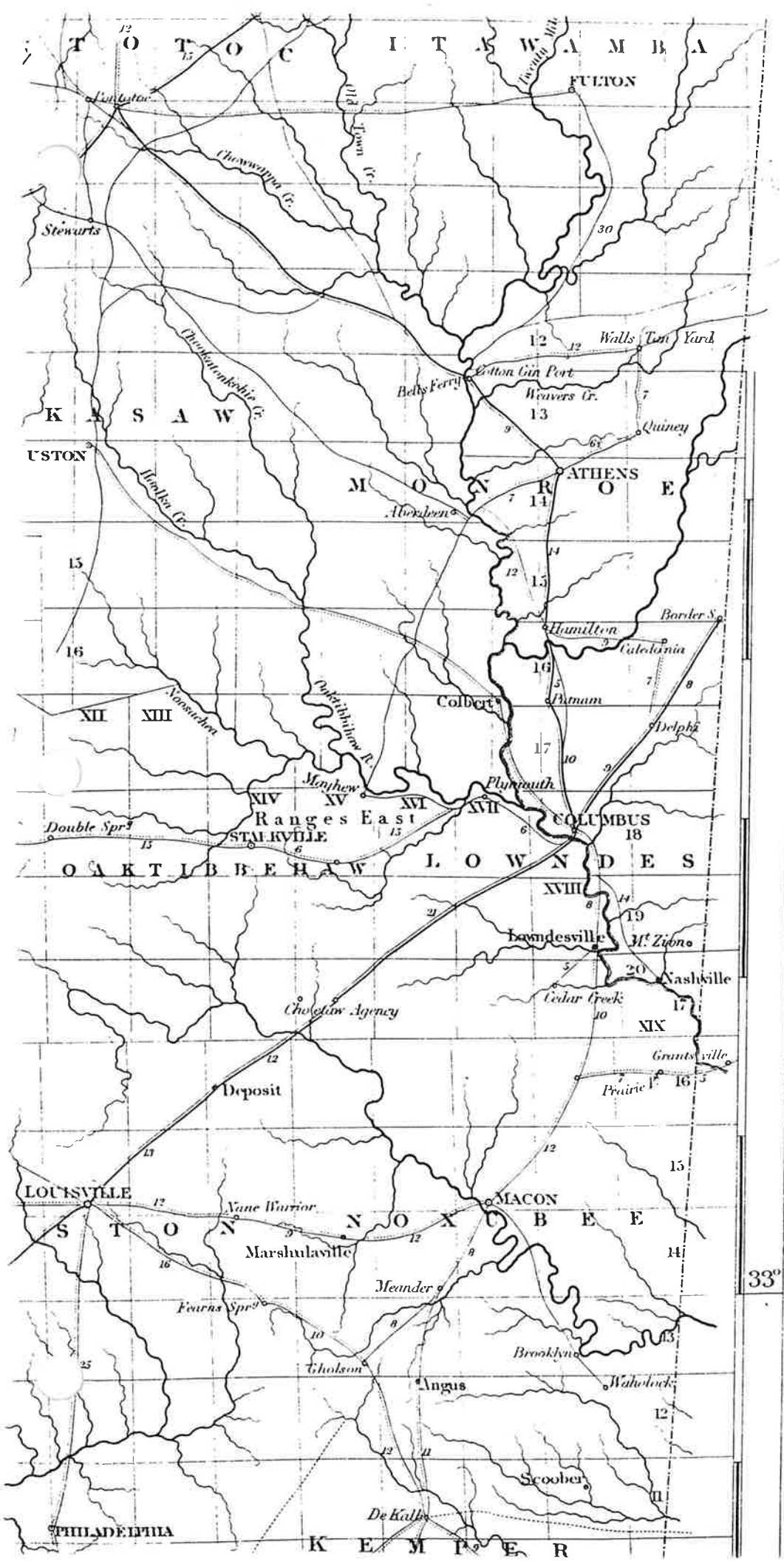
1839

1 :633,600

David H. Burr

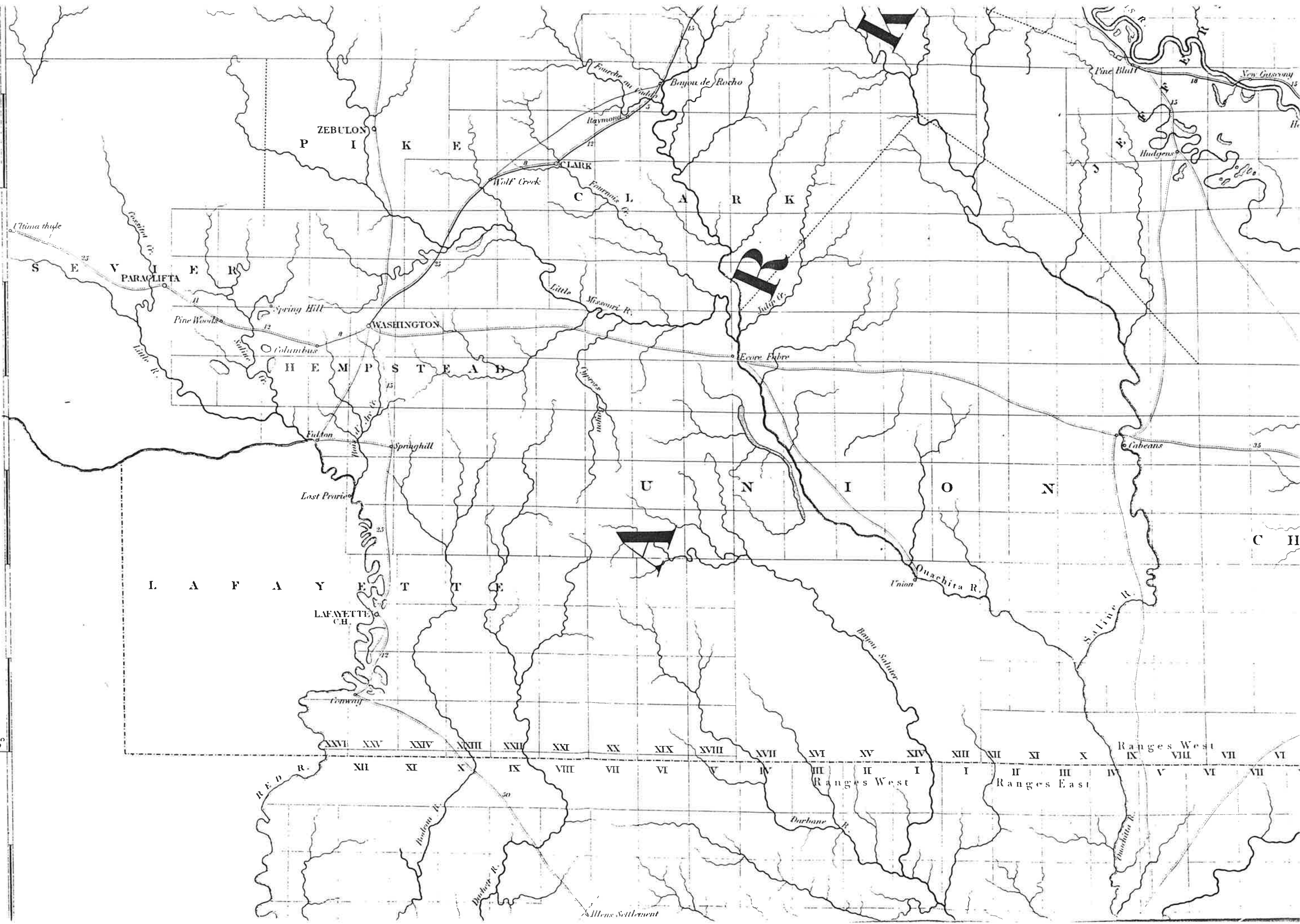






34°

33°



ZEBULON

CLARK

WASHINGTON

HEMPSTEAD

UNION

LAFAYETTE

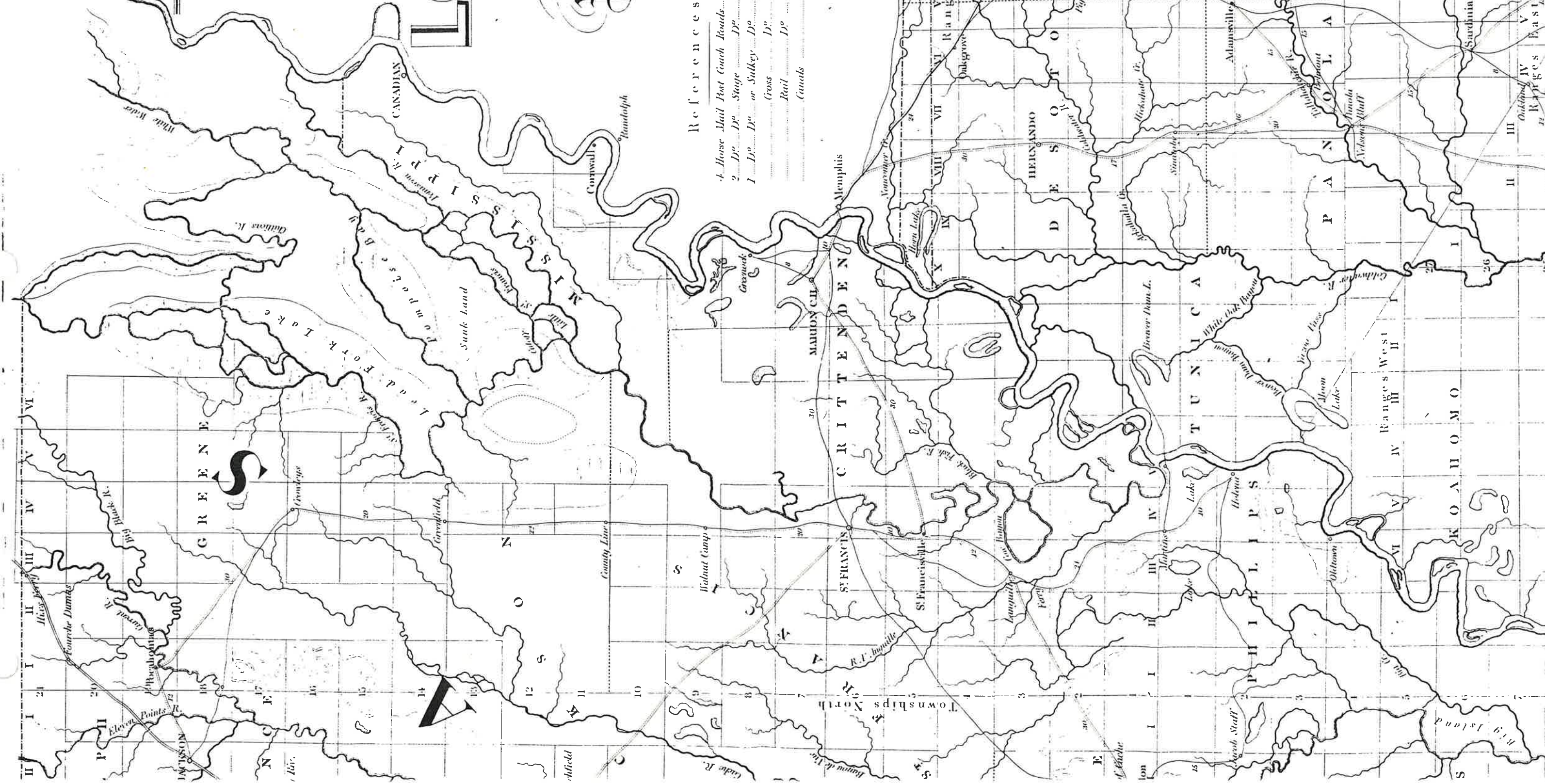
LAFAYETTE

Ranges West

Ranges West

Ranges East

Allens Settlement



# MISSISSIPPI LOUISIANA

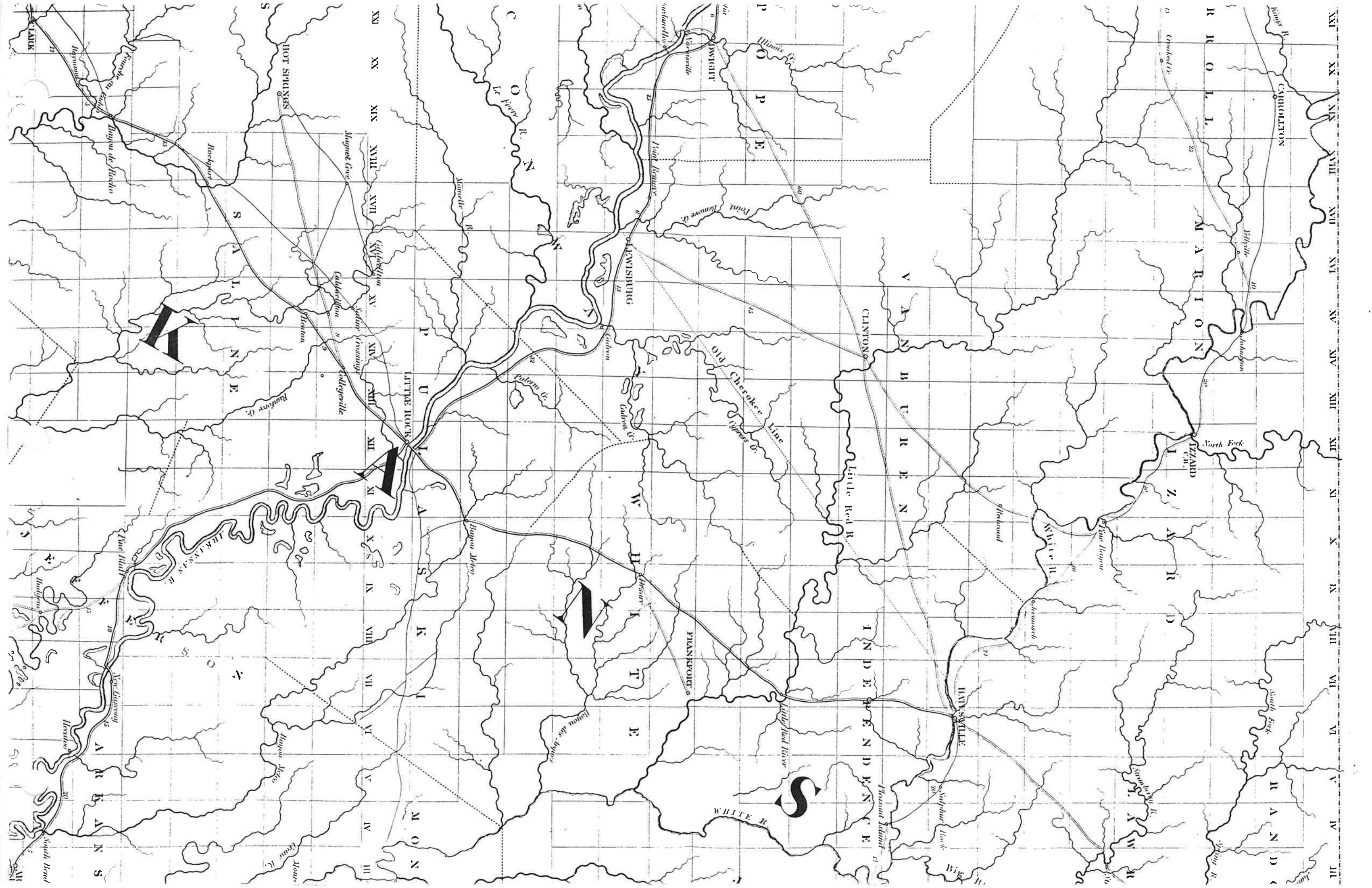
Post Offices

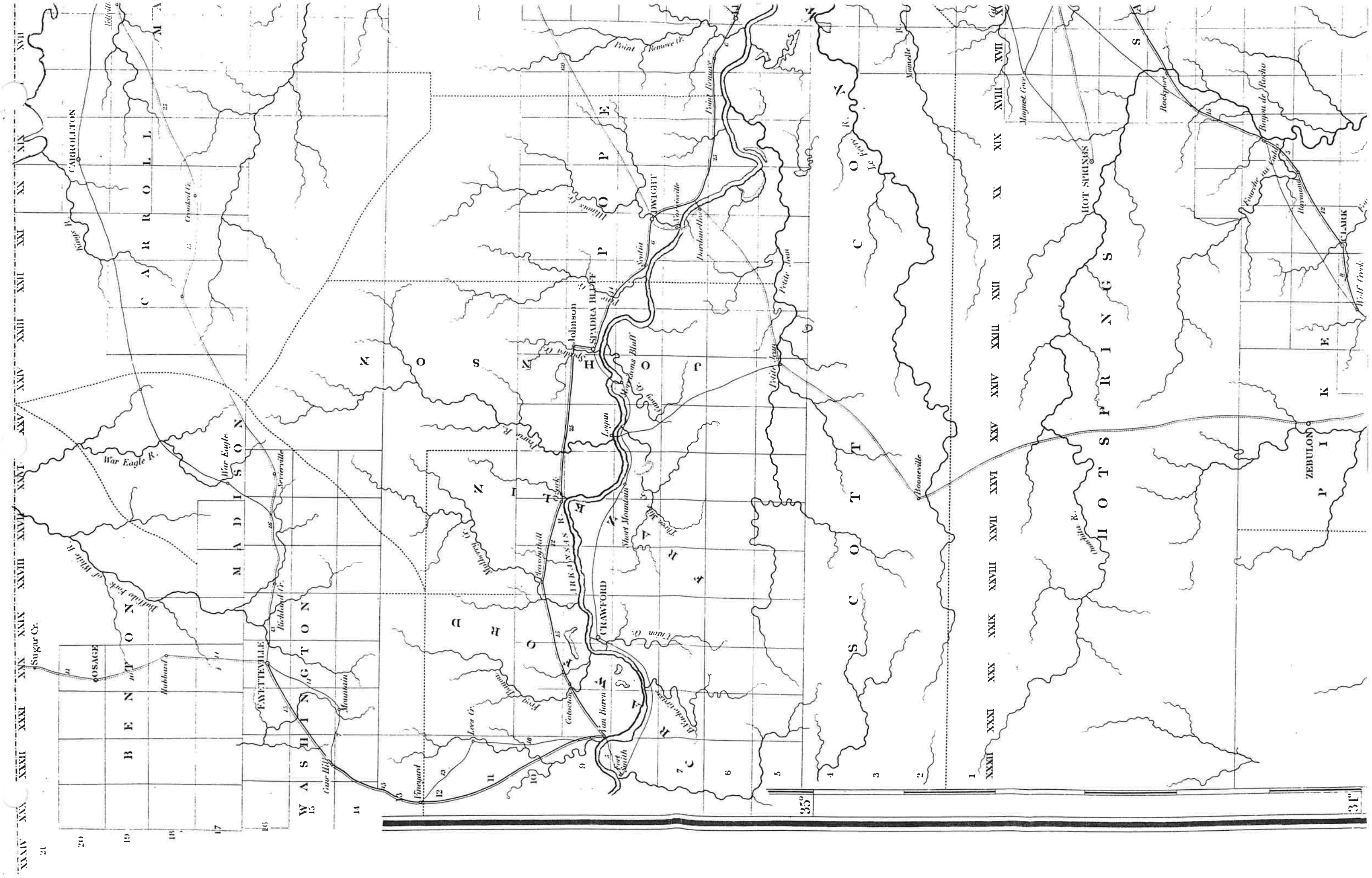
### References,

- 4 Horse Mail Post Coach Roads.....
- 2 D<sup>o</sup> Stage D<sup>o</sup>.....
- 1 D<sup>o</sup> or Sulkey D<sup>o</sup>.....
- Cross D<sup>o</sup>.....
- Rail D<sup>o</sup>.....
- Canals.....

Geographer to







XXMI XXXI XXX XXIX XXVIII XXVII XXVI XXV XXIV XXIII XXII XX I

XXVIII XXVII XXVI XXV XXIV XXIII XXII XX I

XXVIII XXVII XXVI XXV XXIV XXIII XXII XX I

XXVIII XXVII XXVI XXV XXIV XXIII XXII XX I

XXVIII XXVII XXVI XXV XXIV XXIII XXII XX I

XXVIII XXVII XXVI XXV XXIV XXIII XXII XX I

XXVIII XXVII XXVI XXV XXIV XXIII XXII XX I

XXVIII XXVII XXVI XXV XXIV XXIII XXII XX I

XXVIII XXVII XXVI XXV XXIV XXIII XXII XX I

XXVIII XXVII XXVI XXV XXIV XXIII XXII XX I

XXVIII XXVII XXVI XXV XXIV XXIII XXII XX I

XXVIII XXVII XXVI XXV XXIV XXIII XXII XX I

XXVIII XXVII XXVI XXV XXIV XXIII XXII XX I

XXVIII XXVII XXVI XXV XXIV XXIII XXII XX I

XXVIII XXVII XXVI XXV XXIV XXIII XXII XX I



12° 89° 35°

# Map of

# MISSISSIPPI, LOUISIANA & ARKANSAS

*Exhibiting the*  
**Post Offices, Post Roads, Canals, Rail Roads, &c.**  
BY  
*David C. Burr.*

(Late Topographer to the Post Office.) (36 X 47)

Geographer to the House of Representatives of the U.S.

- Ranges
- D<sup>o</sup>
- D<sup>o</sup>
- D<sup>o</sup>
- D<sup>o</sup>

