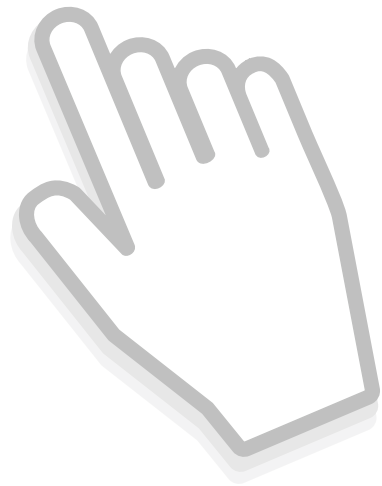


LOOKING FOR SOMETHING NEW?

XVU

A new affordable software for all your digital needs. With just one click you can connect to most Digital CR, Film Digitizer and DDA available on the market today.



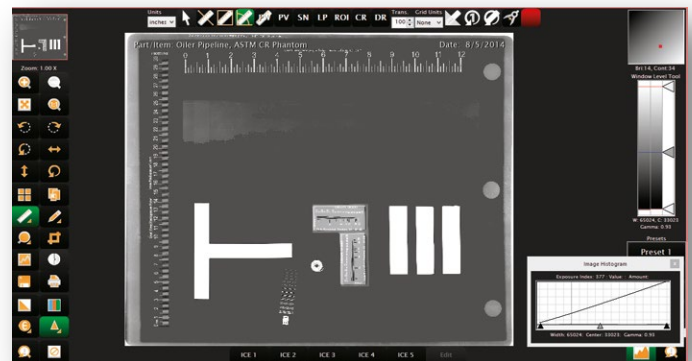
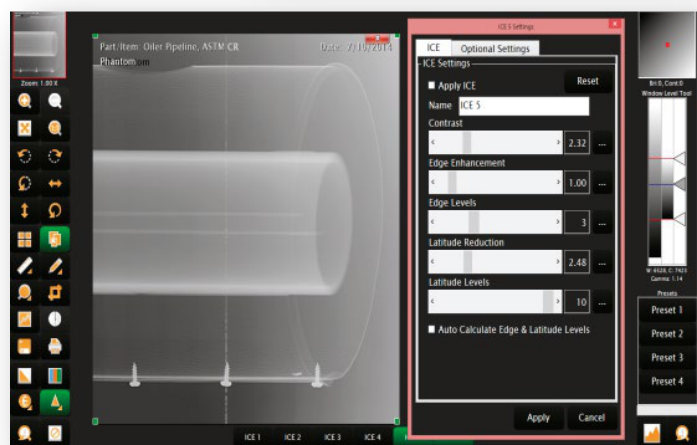
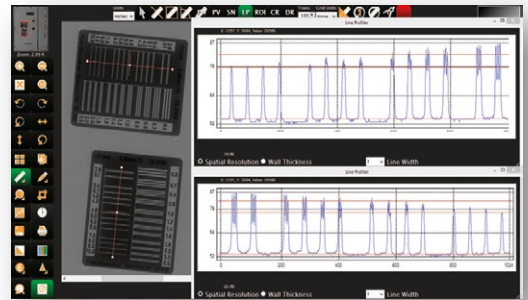
ndt-net

Key Features and Benefits:

- Acquisition
- XVu is compatible with many computed radiography scanners (CR), film digitizers and digital detectors (DDA) from multiple manufacturers.
- CRs – DDAs - Film Digitizers

Viewing, Measurement & Analysis Tools

- Simple main image view window
- Image navigation window
- 1:1 image display
- Zooming
- Panning
- Invert
- Flips/rotations
- Magnifications
- Show/hide part item info on image
- Reset
- Histogram
- Lookup tables
- Customizable filters
- Basic annotations
- Basic measurements
- Point pixel measurements
- Physical length calibration
- Line profiles
- ROI measurements
- Basic spatial resolution measurements
- Wall thickness measurements
- Export files as TIFF, JPG, DICONDE (.DCM)
- Support of multiple monitors



XVu is available in:

- English
- Russian
- Polish
- Spanish

Computer Specification:

XVu can be installed on provided or certified hardware, with specifications similar to the following:

- Intel Core i7 CPU or greater
- 8GB RAM or greater with a 500GB High Performance Solid State Hybrid Drive
- 24" color LCD monitor
- Windows 7/8.1 32-bit with Microsoft .NET 4.0 or later