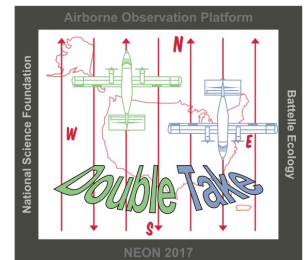




2017 P1C1 Daily Report



Flight Campaign ID: 2017_P1C1

FBO ID & City: Birmingham International Airport
(KBHM) - Birmingham, AL

Domain: 08

Sites Flown: TALL, N08A

Days left in Domain: 17

Flight Hours: 02:20

Hours until maintenance: 45.42

Date: 2017-05-10

Report Author: Ivana Vu

Pilots: Grant Frost, Kyler Dalton

Flight Crew: Mitch Haynes (NIS), Ivana Vu (Lidar)

Ground/GPS: Cameron Chapman (GPS), Abe
Morrison (Ground)

Additional Personnel: None

GPS Instruments:

06 - FBO-KBHM, 07 - TALL

Summary:

Green data was collected at Talladega National Forest (TALL) until high cirrus increased to more than 10%. Crew then completed the D08 Nominal Runway Calibration (N08A) before returning to base.

Issues/Concerns:

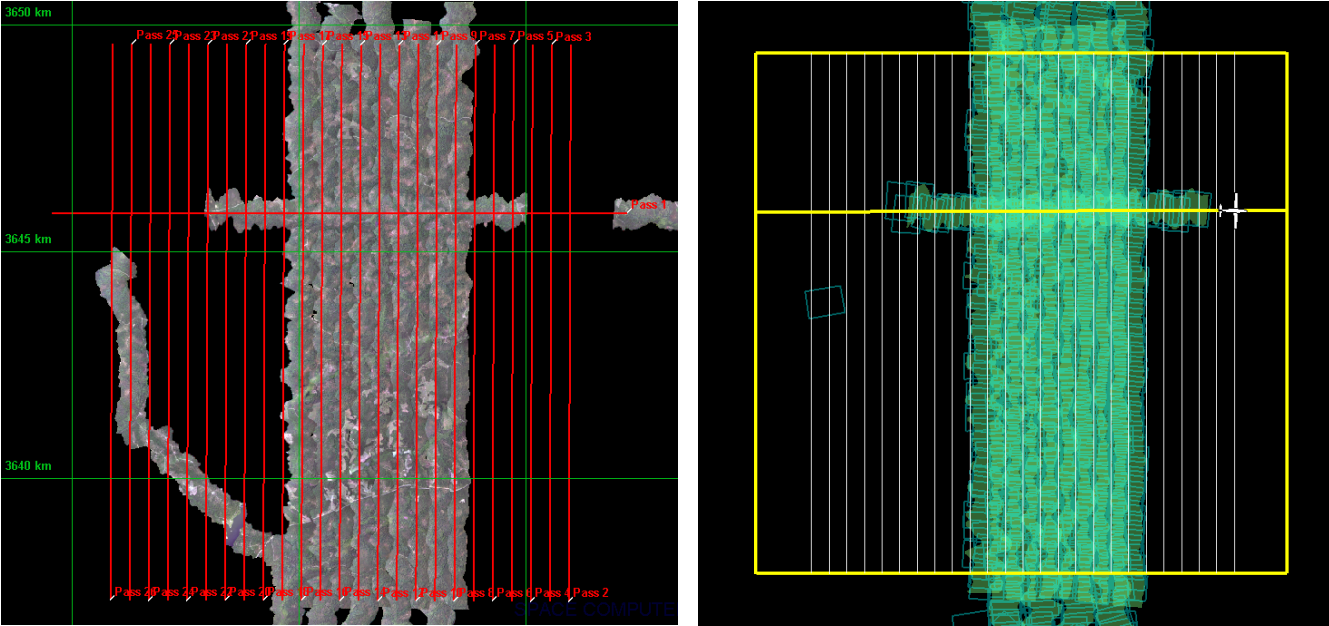
Camera had FMS data errors during TALL collection – issue was resolved after inflight troubleshooting but images were saved to multiple camera drive folders following D-Ops restart. Tristan is aware of the details and will help ensure data extraction is unaffected.

Comments:

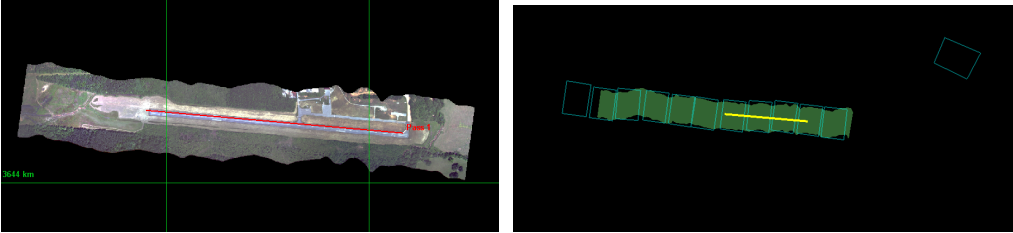
- Completed lines 8-16 at TALL, <10% cloud cover (Priority airshed lines: 8-14)
- Completed N08A

NIS/Lidar Screenshot

TALL



N08A



Domain Coverage

D08 N08A	Line	SpecG	SpecY	SpecR	NIS	Lidar	Camera	Cumulative
	1							NLC
Completed:	(0/1)							NaN%
D08 TALL	Line	SpecG	SpecY	SpecR	NIS	Lidar	Camera	Cumulative
	1							NLC
	8							NLC
	9							NLC
	10							NLC
	11							NLC
	12							NLC
	13							NLC
	14							NLC
	15							NLC
	16							NLC
Completed:	(9/10)							34.62%

Pictures:



Figure 1. NEON tower at Talladega National Forest (photo by Mitch Haynes)



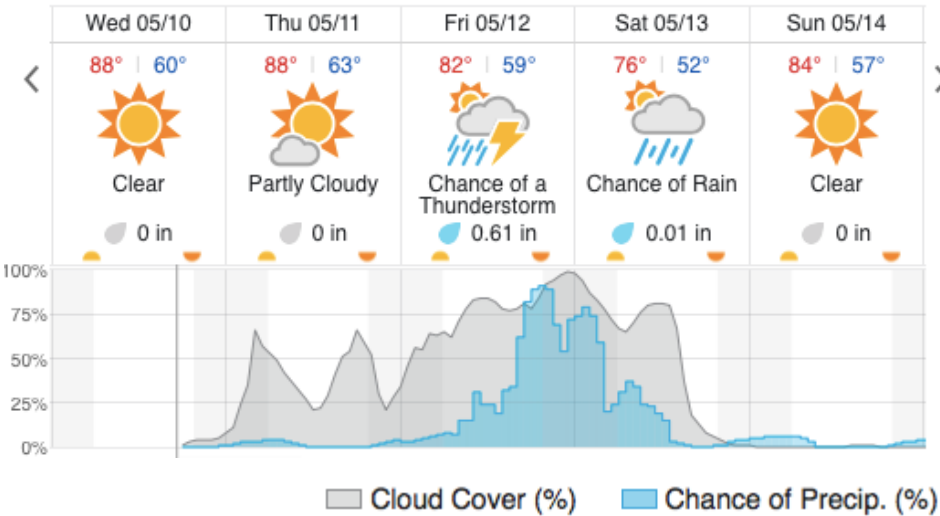
Figure 2. Haze and cirrus at Talladega National Forest (photo by Mitch Haynes)



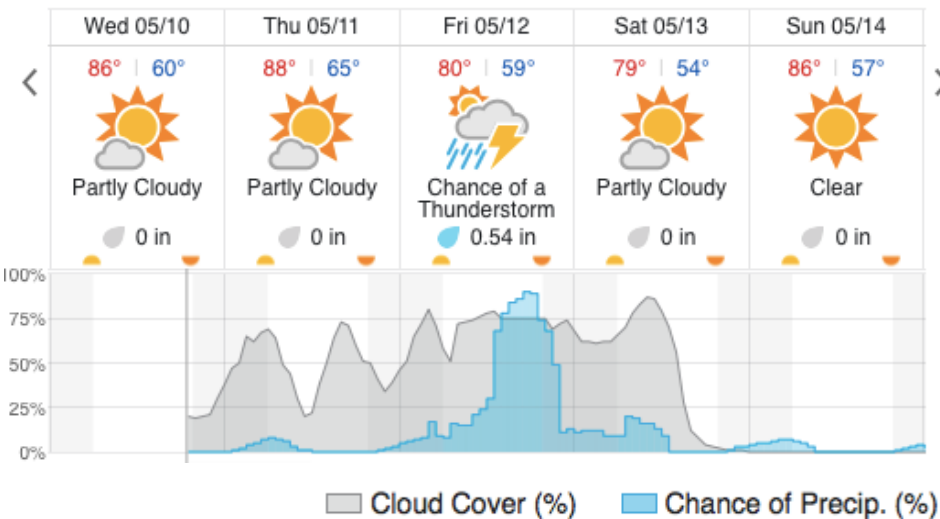
Figure 3. Ridgelines comprising the southern end of the Appalachian Mountains, North America's oldest mountain range

Weather Forecast

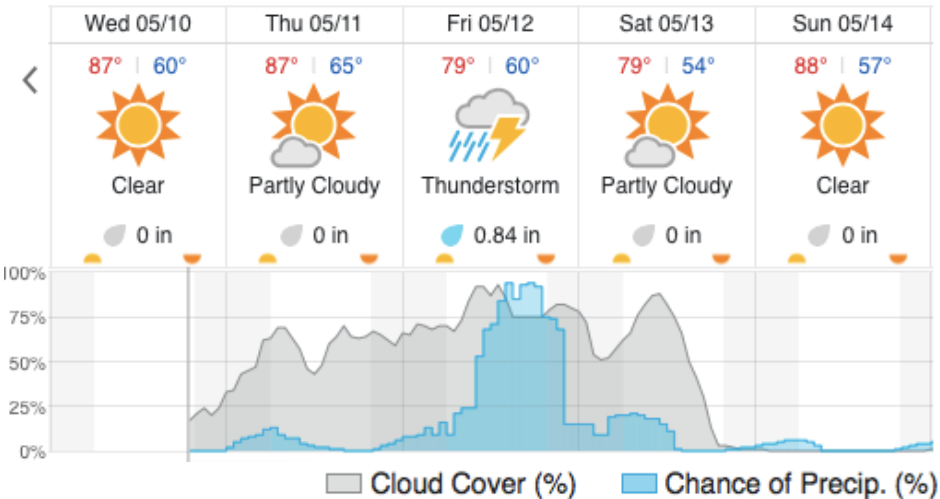
Talladega, AL (TALL)



Forkland, AL (DELA)



Gilbertown, AL (LENO)



Flight collection Plan for May 11th 2017:

Flyority 1:

Collection Area: Talladega National Forest (TALL), *Lines 1-7 & 17-26*

Flight Plan Name: D08_TALL_C1_P1_v1.pln

On Station: 0920 L / 1420 UTC

Flyority 2:

Collection Area: Dead Lake (DELA)

Flight Plan Name: D08_DELA_R1_P1_v1.pln

On Station: 0920 L / 1420 UTC

Flyority 3:

Collection Area: Lenoir Landing (LENO)

Flight Plan Name: D08_LENO_R2_P1_v1.pln

On Station: 0920 L / 1420 UTC

Crew:

Lidar: Mitch Haynes

NIS: Abe Morrison

Ground: Ivana Vu

GPS: Cameron Chapman

Flight collection Plan for May 12th 2017:

Flyority 1:

Collection Area: Talladega National Forest (TALL), *remaining lines*

Flight Plan Name: D08_TALL_C1_P1_v1.pln

On Station: 0920 L / 1420 UTC

Flyority 2:

Collection Area: Dead Lake (DELA)

Flight Plan Name: D08_DELA_R1_P1_v1.pln

On Station: 0920 L / 1420 UTC

Flyority 3:

Collection Area: Lenoir Landing (LENO)

Flight Plan Name: D08_LENO_R2_P1_v1.pln

On Station: 0920 L / 1420 UTC

Crew:

Lidar: Abe Morrison

NIS: Ivana Vu

Ground: Mitch Haynes

GPS: Cameron Chapman