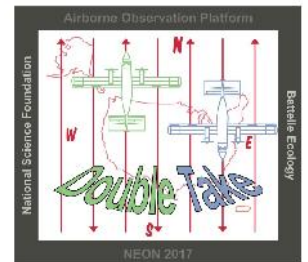




## 2017 P2C1 Daily Report



**Flight Campaign ID:** 2017\_P2C1

**FBO ID & City:** Boulder Municipal Airport (KBDU) -  
Boulder, CO

**Domain:** 10

**Sites Flown:** Training, Calibration H10B, Calibration  
W10B

**Days left in Domain:** 0

**Flight Hours:** 02:02 / 00:51

**Hours until maintenance:** 00.00

**Date:** 2017-05-15

**Report Author:** Doug Cavender

**Pilots:** Justin Eddington, Ben Wooten

**Flight Crew:** Doug Cavender (Lidar), Heather  
Rogers (NIS), John Adler (Trainer)

**Ground/GPS:** Matt Devoe

**Additional Personnel:**

### **GPS Instruments:**

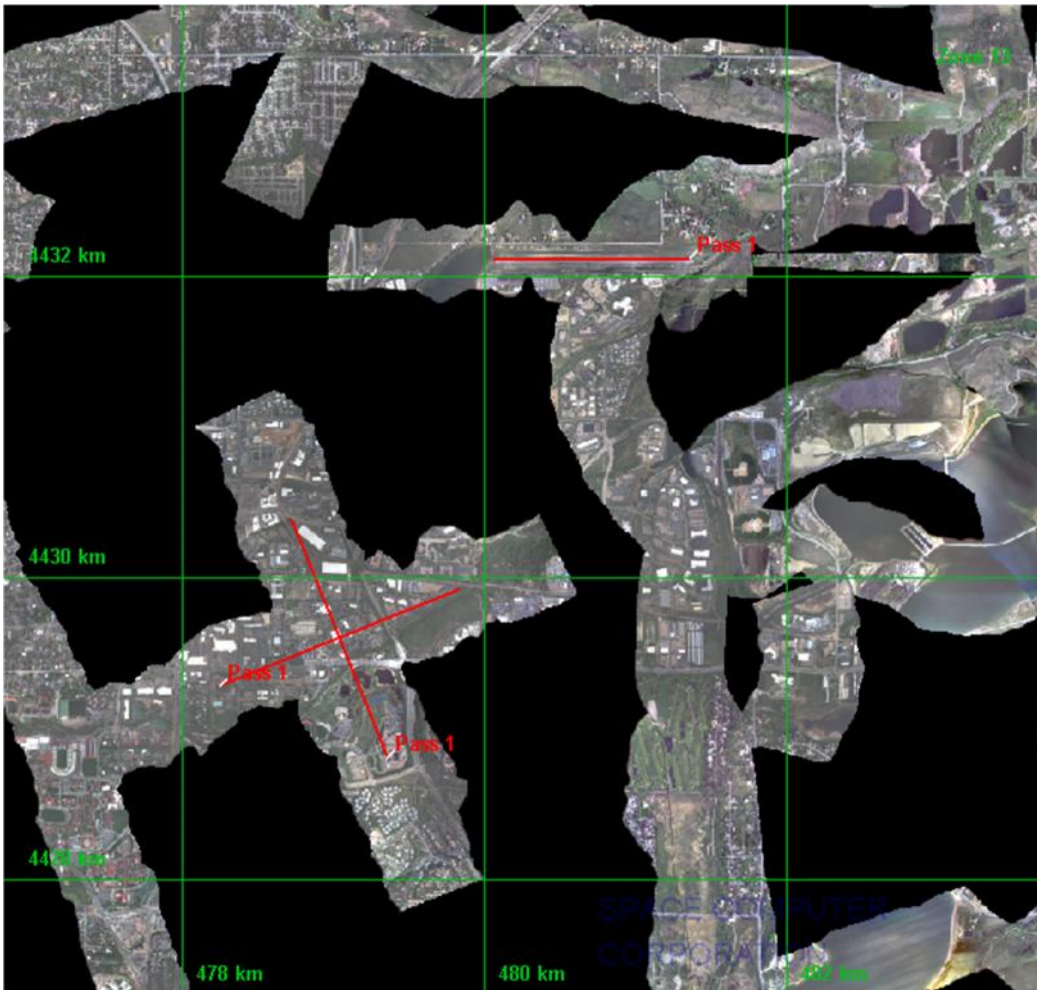
03 - KBDU

**Summary:** We attempted to collect the Greely boresight but were unable due to low clouds. From there we ferried to and completed the HQ Lidar calibration and wiggle calibrations. A second flight was launched and cut short with no data collected. Cryocoolers are now back online in hangar but we are continuing to investigate root causes of the issue.

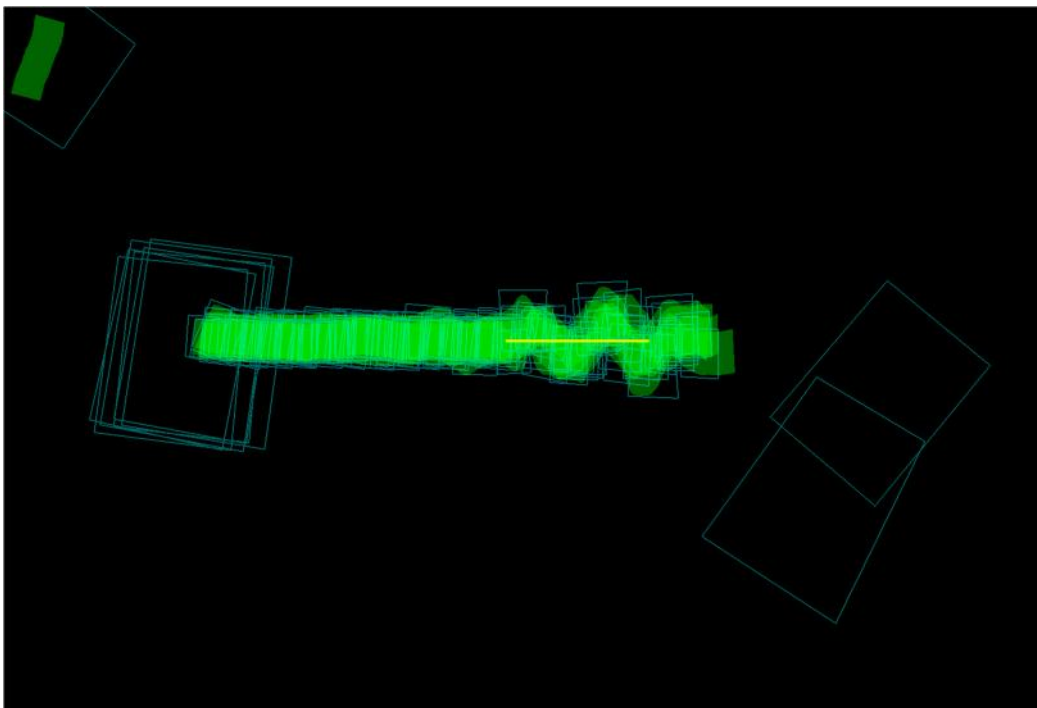
**Issues/Concerns:** Cryocooler failure on second flight prohibited data acquisition.

**Comments:** This was Doug's last training flight in the Lidar seat. Check ride comes next.

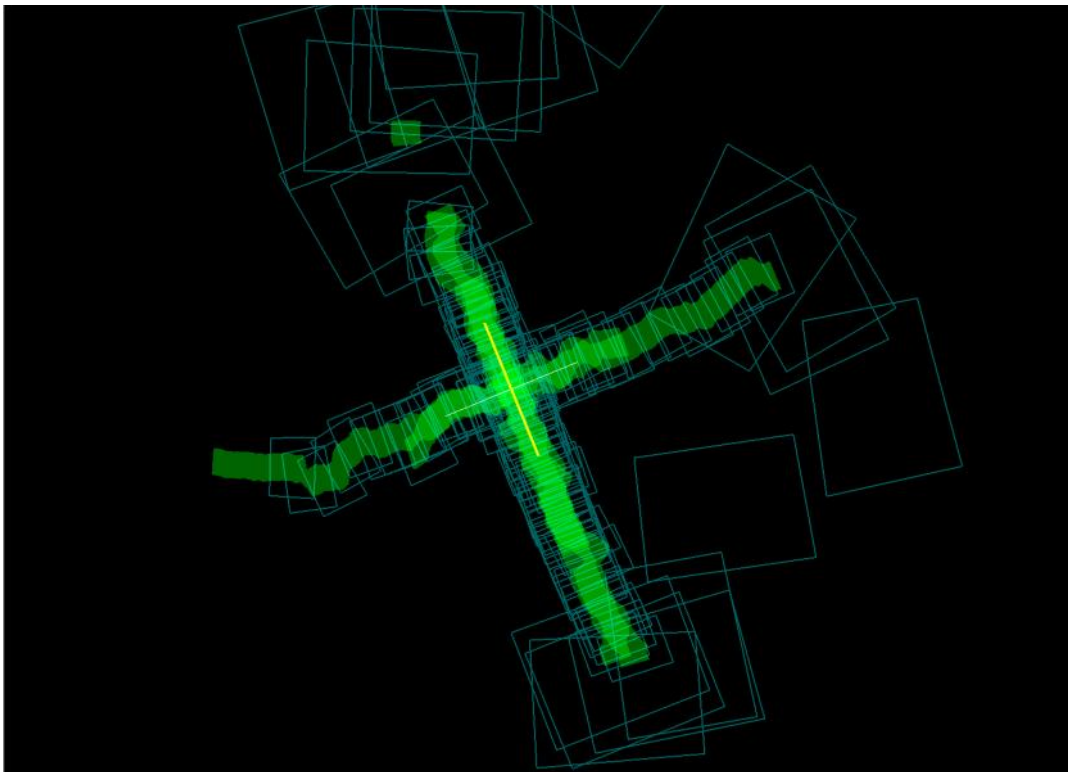
## NIS/Lidar Screenshots:



NIS capture showing HQ Lidar and Wiggle calibrations



Wiggle Test



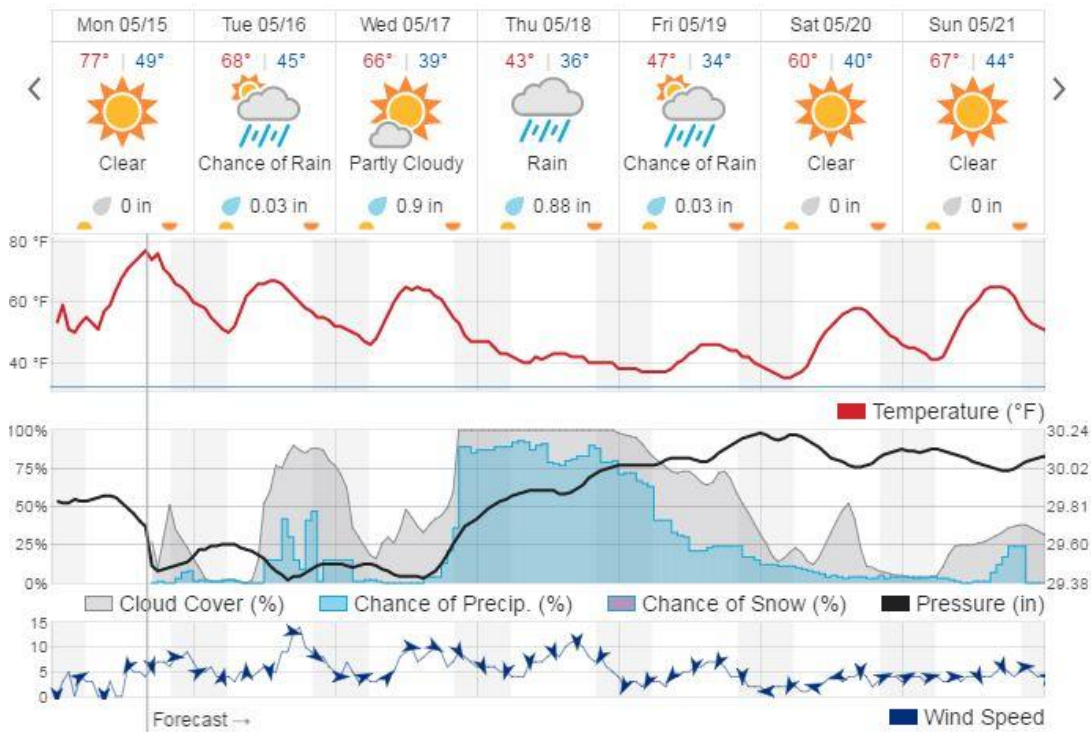
HQ Lidar

**Pictures:**



Low clouds over Greely prevented acquisition.

## Weather Forecast:



## Flight collection Plan for 16 May 2017:

### Flyority 1:

Collection Area: NIS Offset Calibration

Flight Plan Name: D10\_O10A\_NIS\_Offset\_v1.pln

On Station: 0830L / 1430 UTC

### Crew:

Lidar: Heather Rogers (Training)

NIS: Mike Wussow

Observer: John Adler

Ground/GPS: Doug Cavender