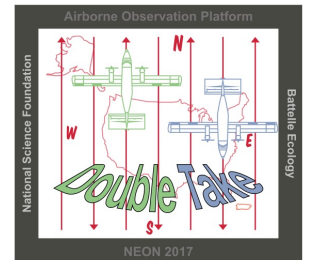




## March 19, 2018 Payload 3 Daily Flight Report



**Date:** 2018-03-19

**Flight Campaign ID:** 2018\_P3C1

**Airport, FBO ID, City:** Boulder Municipal Airport (KBDU) – Boulder, CO

**Domain:** 10

**Sites Flown:** N10C (Functional Check Flight – Nominal Runway)

**Days left in Domain:** 10

**Report Author:** Matt DeVoe

**Flight Crew:** Cameron Chapman, Matt DeVoe, Ivana Vu

**Ground/GPS Crew:** Abe Morrison, Robb Walker

**Pilots:** Stephen Brawders, Mike Francis

**Additional Personnel:** None

**GPS Instruments:** GPS01 – FBO\_KBDU

**Flight Hours:** 02:54

**Hours until aircraft maintenance:** 122.10

### **Summary:**

- The FCF/nominal runway was completed. Lines 1 – 26 (RiAquire Project: D10\_N10C\_Nominal\_Rnwy\_v7\_Q780)
- Ivana V. completed her NIS recertification.
- Cameron C. completed his Reigl LIDAR observation flight.
- Abe M. completed his ground crew recertification

### **New Faults:**

Lidar – Remote Desktop to RiAquire lost connection several times in-flight.

Flight Plans – Current N10C flight plan KML does not include markers.

### **Ongoing Faults:**

Shutter on NIS not closed at the request of the lab manager due to a known malfunction.

### **Other Issues & Concerns:**

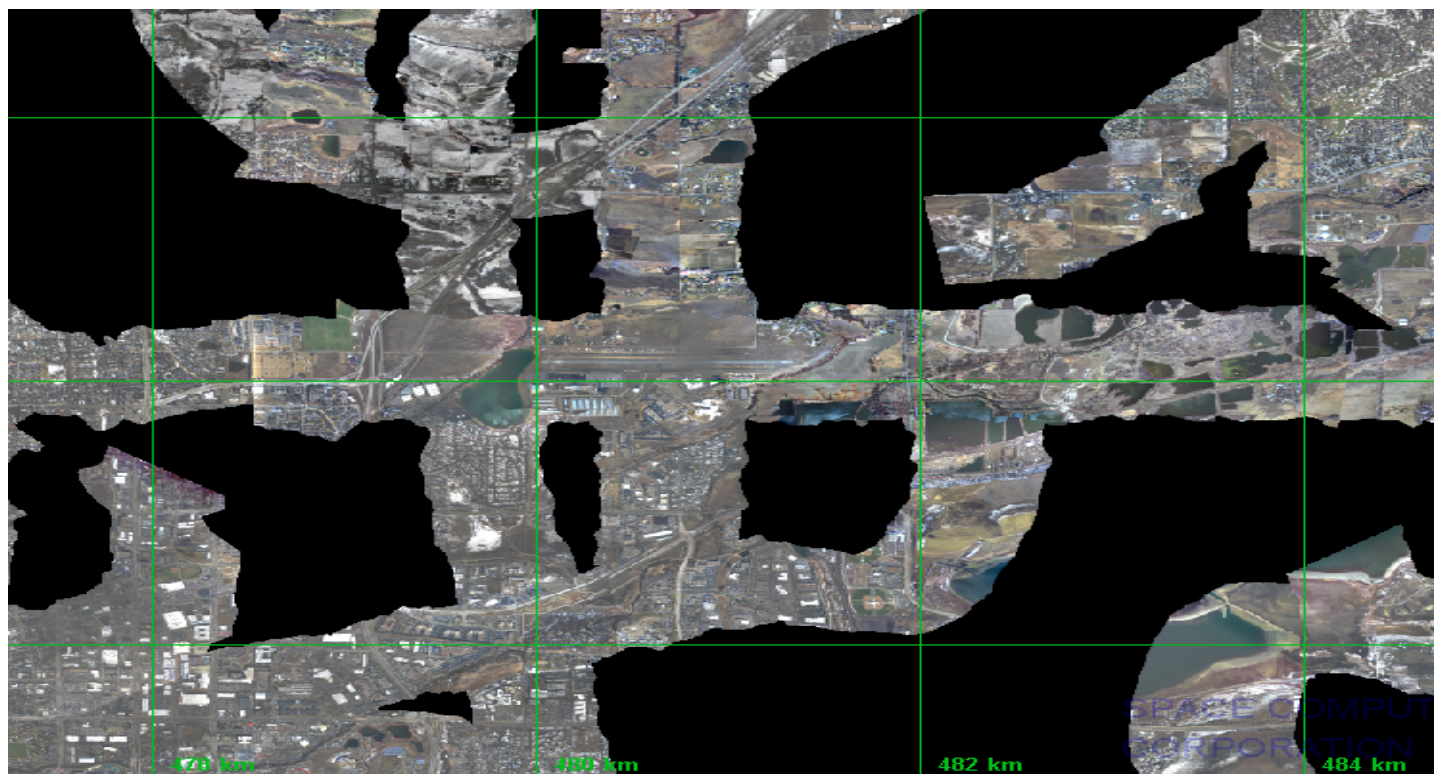
None

### **Comments:**

The weather was mostly cloudy with conditions broken at 8000' MSL and overcast at 10,000' MSL. The cloud deck remained high enough for us to accomplish 26 Functional Check Flight lines plus 2 test lines during 2.54 hours of flight. The LIDAR performed well but will need to have the remote desktop connection to RiAquire fixed ASAP.

The screenshot displays the INS-GPS 1 software interface. The main window shows a 3D plot of trajectories with a green crosshair labeled 'run 1' and 'run 2'. The status bar at the bottom indicates FPS: 2, POINTS: 10410/10410, PROC BUF: 0.00%/0.00%, and NODE BUF: 95.11%/0.00%. A Messages window at the bottom displays a log of system events, including state changes for Q780 and disk usage for INS-GPS 1.

Time	Event
2018-03-19 19:03:55....	2018-03-19 19:04:50.272/6... State of 'Q780' changed to 'Stop work-Logging'
2018-03-19 19:03:55....	2018-03-19 19:04:50.274/6... Automatic sensor stop accepted automatically after '2' seconds.
2018-03-19 19:04:08....	2018-03-19 19:05:03.169/6... 'Data Port' of 'Q780' changed to 'disconnecting' state
2018-03-19 19:04:08....	2018-03-19 19:05:03.170/6... 'Data Port' of 'Q780' changed to 'disconnected' state
2018-03-19 19:04:08....	2018-03-19 19:05:03.172/6... State of 'Q780' changed to 'Initialized'
2018-03-19 19:04:34....	2018-03-19 19:05:29.914/6... 'Disk Usage' of 'INS-GPS 1' changed to '6.5%'.

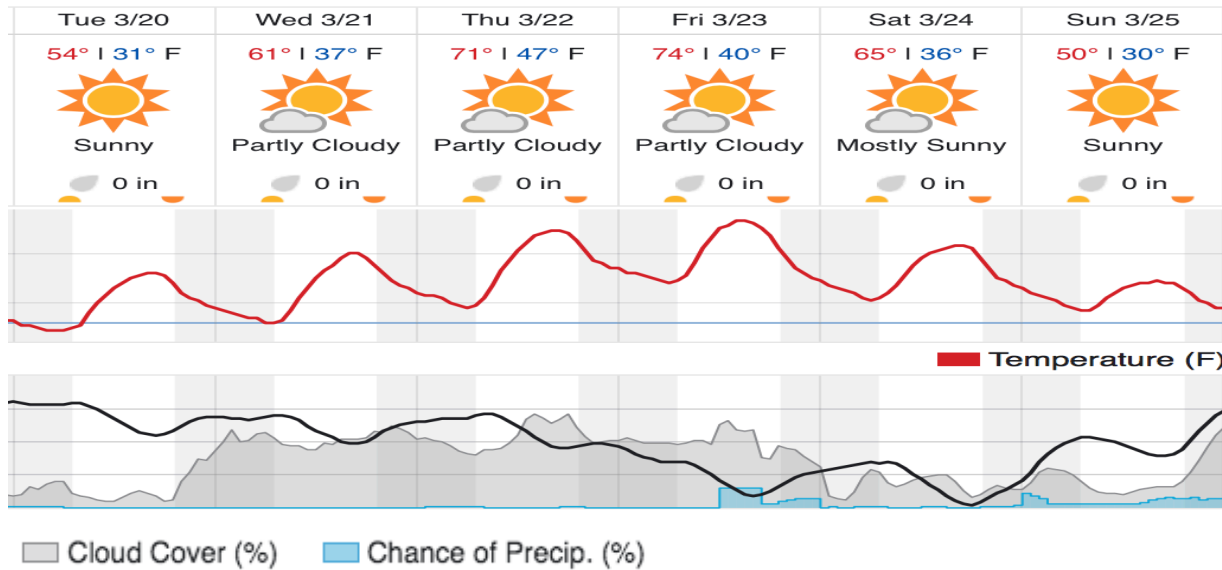


**Daily Domain Coverage:**

Not Applicable to calibration/training flights

**Cumulative Domain Coverage:**

Not Applicable to calibration/training flights

**Weather Forecast:****Flight Collection Plan for 20 March 2018**

Continue P3C1 calibration, NIS and LIDAR training/certification flights.

**Flight Collection Plan for 21 March 2018**

Continue P3C1 calibration, NIS and LIDAR training/certification flights.