



## May 17, 2019 Payload 3 Daily Flight Report



**Date:** 2019-05-17

**Flight Campaign ID:** 2019\_P3C1

**Airport, FBO ID, City:** Topeka Regional Airport (KFOE) - Topeka, KS

**Domain:** 06

**Sites Flown:** KONZ\_KONA (Konza Prairie Biological Station and Relocatable Agricultural Site)

**Days left in Domain:** 12

**Report Author:** Elissa Barris

**Flight Crew:** Elissa Barris, John Adler

**Ground/GPS:** Nick Marusich

**Pilots:** Jeff Quintanilla, Stephen Brawders

**Additional Personnel:** None

**GPS Instruments:** 03 - FBO\_KFOE, U-KSU1

**Flight Hours:** 02:21

**Hours until maintenance:** 49.55

### Summary

Collected initial yellow data over low priority KONA lines and some KONZ TOS lines. Data was collected in heavy haze with some developing cirrus and cumulus. Flights called for the day when conditions eventually shifted to red.

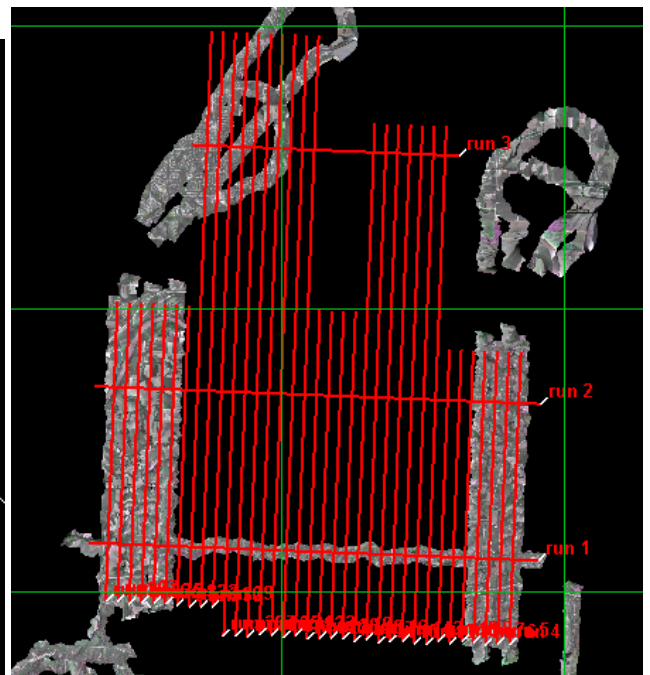
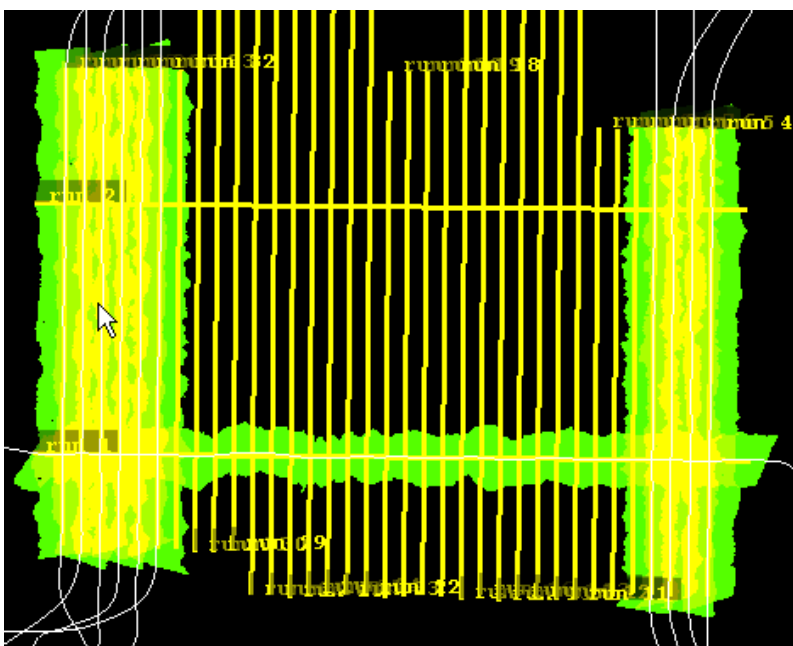
### Concerns

Major storm systems expected in the area over the next several days.

### Comments

Jeff rotating out tomorrow; Gina rotating in.

### Flight Screenshots



## Pictures



Haze over KONZ site

## Daily Coverage

D06   KONZ_KONA	Line	SpecG	SpecY	SpecR	NIS	Lidar	Camera	Cumulative
	1				✓	✓	×	NL
	4				✓	✓	×	NL
	5				✓	✓	×	NL
	6				✓	✓	×	NL
	7				✓	✓	×	NL
	33				✓	✓	×	NL
	34				✓	✓	×	NL
	35				✓	✓	×	NL
	36				✓	✓	×	NL
	37				✓	✓	×	NL
	38				✓	✓	×	NL
Flown:	11							

## Cumulative Domain Coverage

### KONZ\_KONA

1	2	3	4	5	6	7	8	9	10	11	12	13	14	15	16	17	18	19	20
21	22	23	24	25	26	27	28	29	30	31	32	33	34	35	36	37	38		

Flown: 42% (16/38)

Green: 0% (0/38)

Yellow: 42% (16/38)

Red: 0% (0/38)

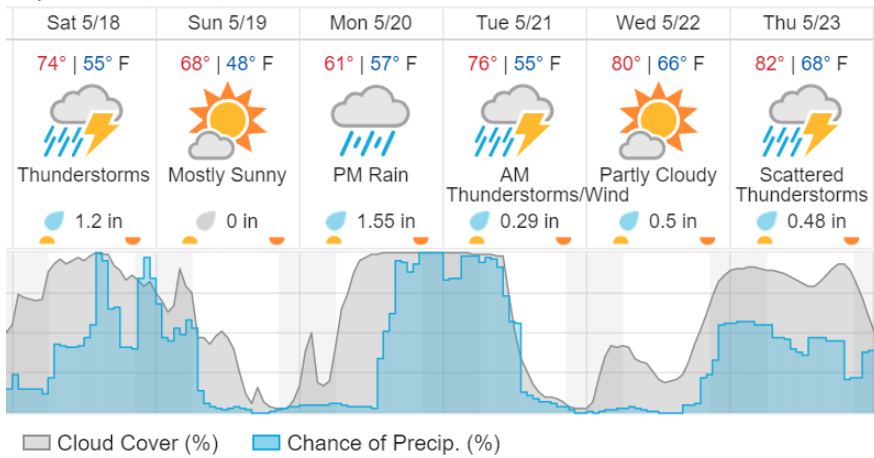
**UKFS**

1	2	3	4	5	6	7	8	9	10	11	12	13	14	15	16	17	18	19	20
21	22	23	24	25	26														

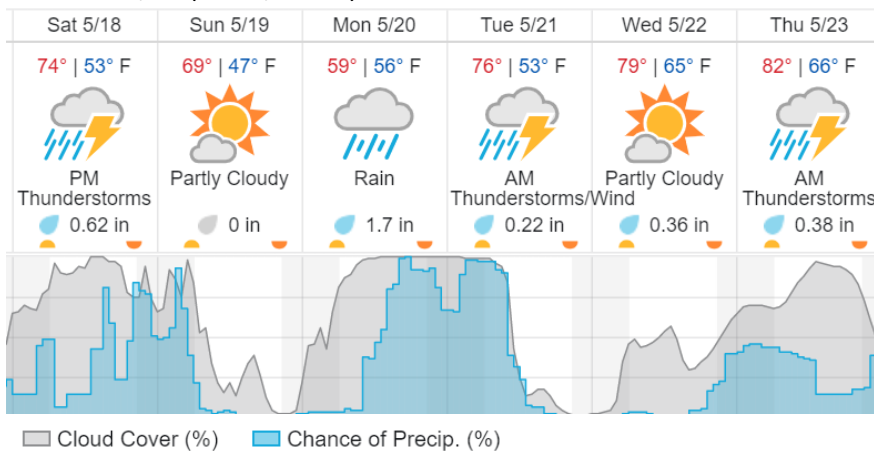
Flown: 0% (0/26)  
 Green: 0% (0/26)  
 Yellow: 0% (0/26)  
 Red: 0% (0/26)

**Weather Forecast**

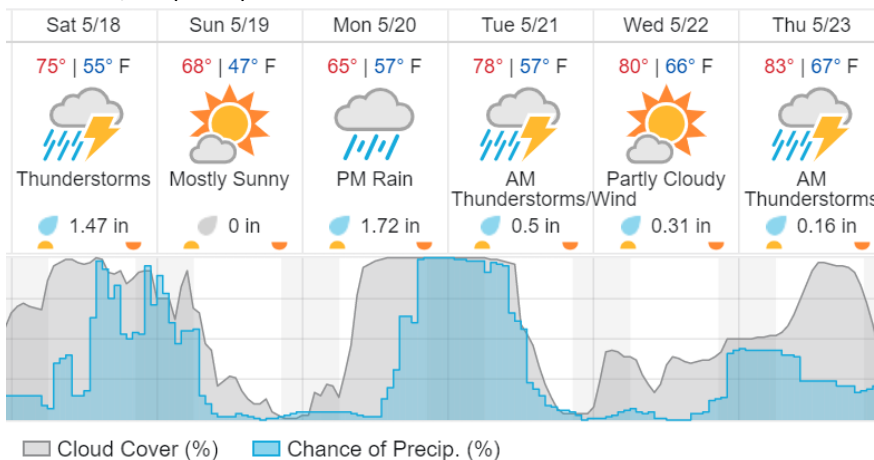
**Topeka, KS (KFOE)**



**Manhattan, KS (KONZ, KONA)**



**Lawrence, KS (UKFS)**



## **Flight Collection Plan for 18 May 2019**

### **Flyority 1**

Collection Area: Konza Prairie Biological Station (KONZ) – Konza Agricultural Site (KONA)

Flight Plan Name: D06\_KONZ\_KONA\_C1\_P1\_v4\_Q780

On-station Time: 1450 – 2150Z

### **Flyority 2**

Collection Area: University of Kansas Field Station (UKFS)

Flight Plan Name: D06\_UKFS\_R1\_P1\_v3\_Q780

On-station Time: 1450 – 2150Z

**Crew:** Nick Marusich (Lidar), John Adler (NIS), Elissa Barris (GPS/Ground)