



June 1, 2019 Payload 2 Daily Flight Report



Date: 2019-06-01

Flight Campaign ID: 2019_P2C1

Airport, FBO ID, City: Manassas Regional (KHEF) - Manassas, VA

Domain: 02

Sites Flown: BLAN (Blandy Experimental Farm), SCBI (Smithsonian Conservation Biology Institute), SERC (Smithsonian Ecological Research Center)

Days left in Domain: 3

Report Author: Abe Morrison

Flight Crew: Abe Morrison, Mitch Haynes

Ground/GPS: Cameron Chapman

Pilots: Mark Solper, Chad Evans

Additional Personnel:

GPS Instruments: 02 - FBO_KHEF, 08 - SERC, 00 - AOP_BLAN, 00 - AOP_SCBI

Flight Hours: 03:17 + 02:18

Hours until maintenance: 24.80

Summary

With high cirrus clouds throughout the region the crew had the opportunity to finish initial collection under “red” sky conditions. They collected 7 lines at SCBI and 14 lines at BLAN in the first flight of the day, and 13 lines at SERC in the second flight.

Concerns

The camera computer crashed during the first flight of the day and required a restart of that system. This failure has been observed before.

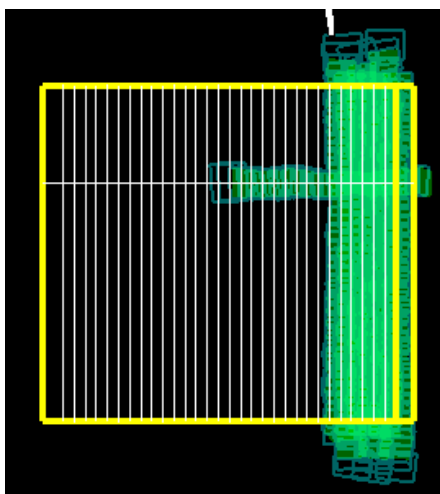
Comments

--Pilot Mark Solper departs today and will be replaced by Justin Eddington.

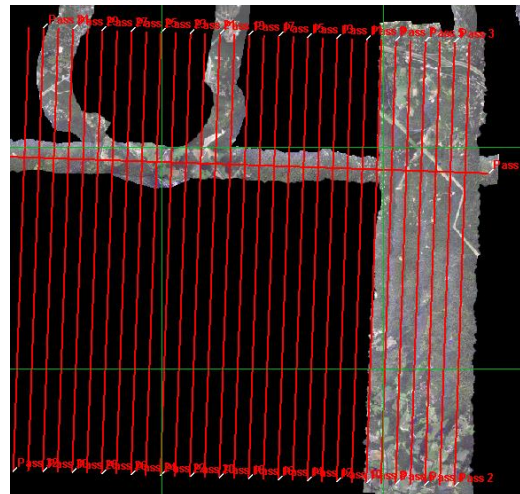
Flight Screenshots

SCBI

LIDAR

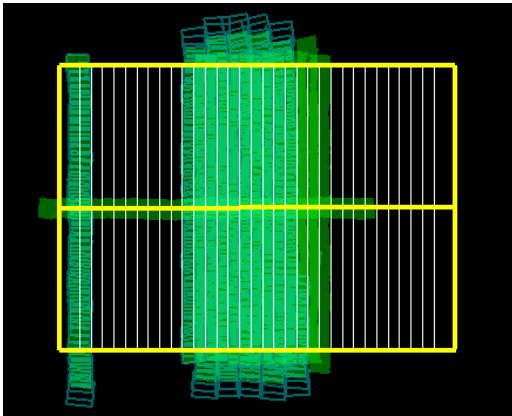


NIS

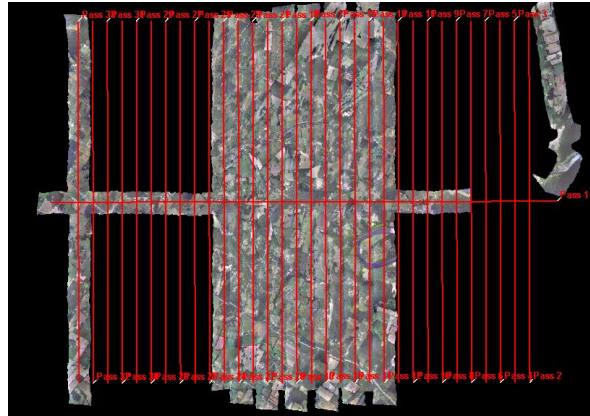


BLAN

LIDAR

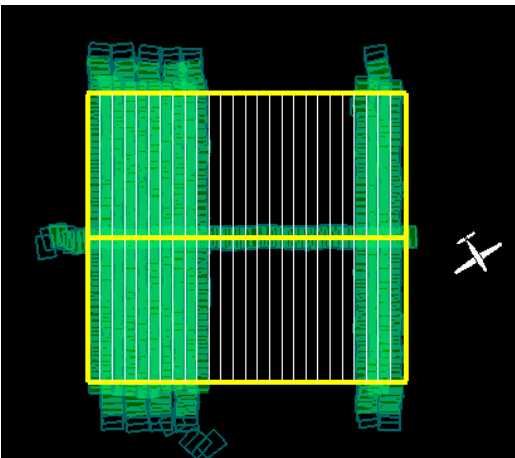


NIS

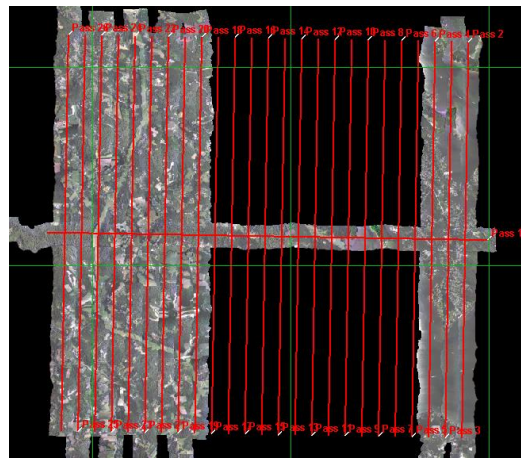


SERC

LIDAR



NIS



Daily Coverage

D02 BLAN	Line	SpecG	SpecY	SpecR	NIS	Lidar	Camera	Cumulative
	1				✓	✓	✓	NLC
	12				✓	✓	✓	NLC
	13				✓	✓	✓	NLC
	14				✓	✓	✓	NLC
	15				✓	✓	✓	NLC
	16				✓	✓	✓	NLC
	17				✓	✓	✓	NLC
	18				✓	✓	✓	NLC
	19				✓	✓	✓	NLC
	20				✓	✓	✓	NLC
	21				✓	✓	✓	NLC
	22				✓	✓	✓	NLC
	23				✓	✓	✓	NLC
	33				✓	✓	✓	NLC
Flown:	14							

D02 SCBI	Line	SpecG	SpecY	SpecR	NIS	Lidar	Camera	Cumulative
	1				✓	✓	✓	NLC
	2				✓	✓	✓	NLC
	3				✓	✓	✓	NLC
	4				✓	✓	✓	NLC
	5				✓	✓	✓	NLC
	6				✓	✓	✓	NLC
	7				✓	✓	✓	NLC
Flown:	7							

D02 SERC	Line	SpecG	SpecY	SpecR	NIS	Lidar	Camera	Cumulative
	1				✓	✓	✓	NLC
	2				✓	✓	✓	NLC
	3				✓	✓	✓	NLC
	4				✓	✓	✓	NLC
	18				✓	✓	✓	NLC
	19				✓	✓	✓	NLC
	20				✓	✓	✓	NLC
	21				✓	✓	✓	NLC
	22				✓	✓	✓	NLC
	23				✓	✓	✓	NLC
	24				✓	✓	✓	NLC
	25				✓	✓	✓	NLC
	26				✓	✓	✓	NLC
Flown:	13							

Cumulative Domain Coverage

BLAN

1	2	3	4	5	6	7	8	9	10	11	12	13	14	15	16	17	18	19	20	
21	22	23	24	25	26	27	28	29	30	31	32	33								

Flown: 100% (33/33)

Green: 0% (0/33)

Yellow: 0% (0/33)

Red: 103% (34/33)

N02A

1

Flown: 100% (1/1)

Green: 0% (0/1)

Yellow: 0% (0/1)

Red: 100% (1/1)

SCBI

1	2	3	4	5	6	7	8	9	10	11	12	13	14	15	16	17	18	19	20	
21	22	23	24	25	26	27	28	29	30	31	32									

Flown: 100% (32/32)

Green: 0% (0/32)

Yellow: 0% (0/32)

Red: 103% (33/32)

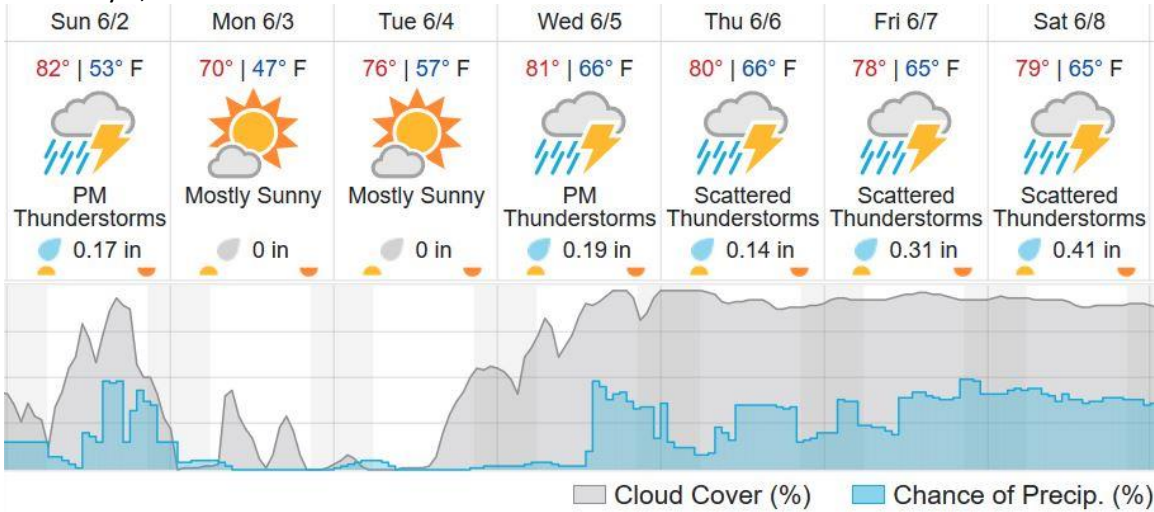
SERC

1	2	3	4	5	6	7	8	9	10	11	12	13	14	15	16	17	18	19	20
21	22	23	24	25	26														

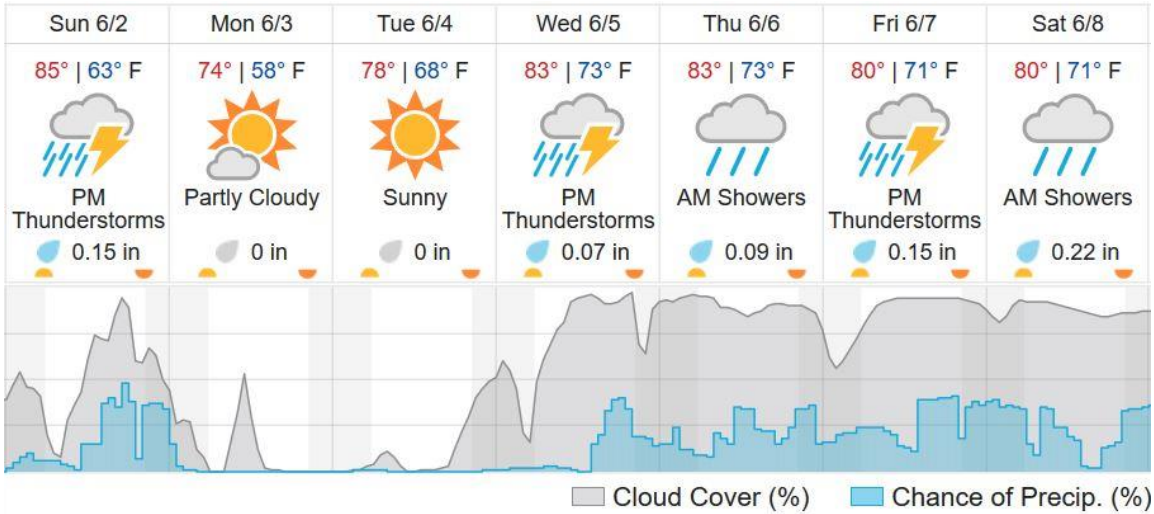
Flown: 100% (26/26)
 Green: 23% (6/26)
 Yellow: 31% (8/26)
 Red: 50% (13/26)

Weather Forecast

Front Royal, VA



Annapolis, MD



Flight Collection Plan for 2 June 2019

Flyority1:

Collection Area: Smithsonian Conservation Biology Institute (SCBI)

**If "Green" Conditions

Flight Plan Name: D02_SCBI_C1_P1_v1.pln

On Station Time: 09:30 L / 13:30 UTC

Flyority2:

Collection Area: Smithsonian Ecological Research Center (SERC)

**Lines 1-11 & 18-26 If "Green" Conditions

Flight Plan Name: D02_SERC_R1_P1_v1.pln

On Station Time: 09:30 L / 13:30 UTC

Flyority3:

Collection Area: Blandy Experimental Farm (BLAN)

**If "Green" Conditions

Flight Plan Name: D02_BLAN_R2_P1_v2.pln

On Station Time: 09:30 L / 13:30 UTC

Crew: Cameron Chapman (Lidar), Abe Morrison (NIS), Mitch Haynes (Ground/GPS)

Flight Collection Plan for 3 June 2019

Flyority 1 – 4 Same as previous day

Crew: Mitch Haynes (Lidar), Cameron Chapman (NIS), Abe Morrison (Ground/GPS)