



## August 27, 2019 Payload 2 Daily Flight Report



**Date:** 2019-08-27

**Flight Campaign ID:** 2019\_P2C1

**Airport, FBO ID, City:** El Paso International Airport (KELP) - El Paso, TX

**Domain:** 14

**Sites Flown:** JORN\_P2 (Jornada Priority 2)

**Days left in Domain:** 16

**Report Author:** Ivana Vu

**Flight Crew:** Ivana Vu, Mitch Haynes

**Ground/GPS:** Mitch Haynes

**Pilots:** Paul Muth, Micah Hoogeveen

**Additional Personnel:** None

**GPS Instruments:** 02 - FBO\_KELP, U-P026, U-RG07, U-SG33

**Flight Hours:** 03:30

**Hours until maintenance:** 111.22

### Summary

Flight crew returned to JORN today where cloud cover was 10-50%. Coverage is now complete at this site so we will relocate from El Paso to Scottsdale, AZ on Thursday to be closer to SRER and SYCA.

### Concerns

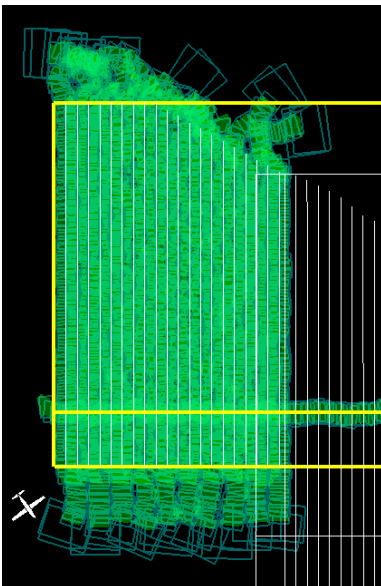
- GPS\_SRER is still offline – domain staff are planning to be at the tower site tomorrow
- Northern end of this flight box was too close to restricted airspace for pilots to complete standard turns without going over our bank angle limit

### Comments

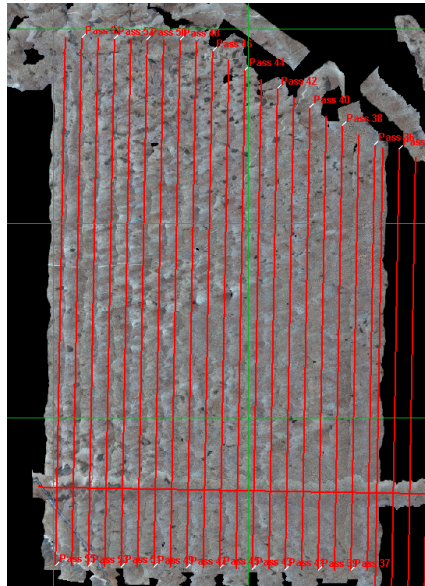
Mitch will depart tomorrow to troubleshoot the GPS at SRER and deploy an AOP base station at either SRER or the Tucson Airport

### Flight Screenshots

Lidar



Spectrometer



**Estimated Cloud Cover Key**

Green:	Yellow:	Red:
0-10%	10-50%	>50%

**Daily Coverage**

D14 JORN_P2	Line	SpecG	SpecY	SpecR	NIS	Lidar	Camera	Cumulative
	35				✓	✓	✓	NLC
	36				✓	✓	✓	NLC
	37				✓	✓	✓	NLC
	38				✓	✓	✓	NLC
	39				✓	✓	✓	NLC
	40				✓	✓	✓	NLC
	41				✓	✓	✓	NLC
	42				✓	✓	✓	NLC
	43				✓	✓	✓	NLC
	44				✓	✓	✓	NLC
	45				✓	✓	✓	NLC
	46				✓	✓	✓	NLC
	47				✓	✓	✓	NLC
	48				✓	✓	✓	NLC
	49				✓	✓	✓	NLC
	50				✓	✓	✓	NLC
	51				✓	✓	✓	NLC
	52				✓	✓	✓	NLC
	53				✓	✓	✓	NLC
	54				✓	✓	✓	NLC
	55				✓	✓	✓	NLC
Flown:	21							

**Cumulative Domain Coverage**

**JORN\_P1**

1	2	3	4	5	6	7	8	9	10	11	12	13	14	15	16	17	18	19	20
21	22	23	24	25	26	27	28	29	30	31	32	33	34						

Flown: 100% (34/34)

Green: 91% (31/34)

Yellow: 9% (3/34)

Red: 0% (0/34)

**JORN\_P2**

35	36	37	38	39	40	41	42	43	44	45	46	47	48	49	50	51	52	53	54
55																			

Flown: 100% (21/21)

Green: 5% (1/21)

Yellow: 100% (21/21)

Red: 0% (0/21)

**N14A**

1
---

Flown: 100% (1/1)

Green: 100% (1/1)

Yellow: 0% (0/1)

Red: 0% (0/1)

### SRER\_P1

1	2	3	4	5	6	7	8	9	10	11	12	13	14	15	16	17	18	19	20
21	22	23	24	25	26	27	28	29	30	31	32	33	34	35	36	37	38	39	40

Flown: 0% (0/40)  
 Green: 0% (0/40)  
 Yellow: 0% (0/40)  
 Red: 0% (0/40)

### SRER\_P2

41	42	43	44	45	46	47	48	49	50	51	52	53	54	55	56	57	58	59	60
61	62	63	64																

Flown: 0% (0/24)  
 Green: 0% (0/24)  
 Yellow: 0% (0/24)  
 Red: 0% (0/24)

### SRER\_P3

65	66	67	68	69	70	71	72	73	74	75	76	77	78	79	80	81	82	83	84
85	86	87	88	89	90														

Flown: 0% (0/26)  
 Green: 0% (0/26)  
 Yellow: 0% (0/26)  
 Red: 0% (0/26)

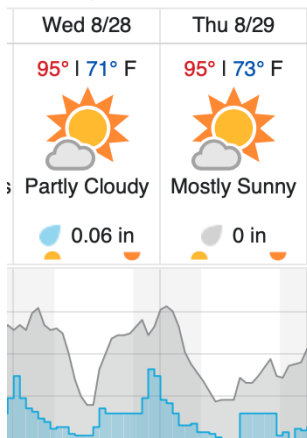
### SYCA

1	2	3	4	5	6	7	8	9	10	11	12	13	14	15	16	17	18	19	20
21	22	23	24	25	26	27	28	29	30	31	32	33	34	35	36	37	38	39	40
41	42	43	44	45	46	47	48	49	50	51	52								

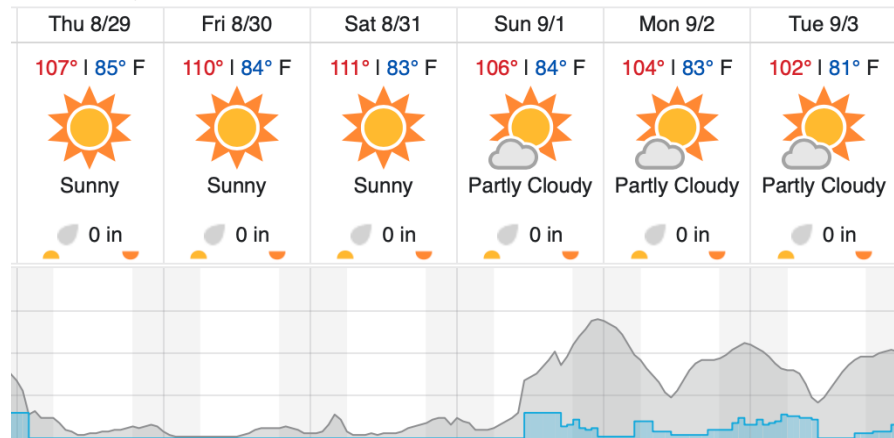
Flown: 0% (0/52)  
 Green: 0% (0/52)  
 Yellow: 0% (0/52)  
 Red: 0% (0/52)

### Weather Forecast

#### El Paso, TX



#### Scottsdale, AZ



Cloud Cover (%)    Chance of Precip. (%)

### **Flight Collection Plan for 28 August 2019**

No flights scheduled

### **Flight Collection Plan for 30 August 2019**

Transit to Scottsdale, AZ

Crew: Ivana Vu

### **Flight Collection Plan for 31 August 2019**

#### **Flyority 1:**

Collection Area: Santa Rita Experimental Range – Priority 1 Flight Box (SRER\_P1)

Flight Plan Name: D14\_SRER\_C1\_P1\_P2\_P3\_v5.pln

On-station Time: 1620 – 2230 UTC / 0920 – 1530 MST

#### **Flyority 2:**

Collection Area: Santa Rita Experimental Range – Priority 2 Flight Box (SRER\_P2)

Flight Plan Name: D14\_SRER\_C1\_P1\_P2\_P3\_v5.pln

On-station Time: 1620 – 2230 UTC / 0920 – 1530 MST

#### **Flyority 3:**

Collection Area: Santa Rita Experimental Range – Priority 3 Flight Box (SRER\_P3)

Flight Plan Name: D14\_SRER\_C1\_P1\_P2\_P3\_v5.pln

On-station Time: 1620 – 2230 UTC / 0920 – 1530 MST

#### **Flyority 4:**

Collection Area: Sycamore Creek – Priority 1 Flight Box (SYCA)

Flight Plan Name: D14\_SYCA\_A1\_P1\_v5\_750\_max.pln

On-station Time: 1620 – 2230 UTC / 0920 – 1530 MST

**Crew:** Mitch Haynes (Lidar), Ivana Vu (NIS/GPS)