



Payload 3 Daily Flight Report



Date: 2020-06-21

Flight Campaign ID: P3C1

Airport, FBO ID, City: Boulder Municipal Airport (KBDU) - Boulder, CO

Domain: 00 (Training & Calibration), 10 (Central Plains), 13 (Southern Rockies & Colorado Plateau)

Sites Flown: H10C (NEON Headquarters Lidar Test - Riegl), N10D (Nominal Runway at KBDU - Riegl)

Days left in Domain: 14

Report Author: Cameron Chapman

Lidar Operators: Cameron Chapman

Flight Hours: 02:40

Spectrometer Operators: Mitch Haynes

Hours until maintenance: 97.83

Pilots: Justin Eddington, Lane Taylor

GPS Instruments: AOP_KBDU

Ground Crew: Elissa Barris

Summary

The crew took advantage of the less than optimal weather to conduct calibration re-flights. We completed the Nominal Runway and the Lidar HQ flight plans.

Concerns

- GPS 1 and 5 did not download data last night.
- GPS 1 is NOT accessible however GPS 5 IS accessible.
- CPER Hut appears to be back online however the AOP permanent GPS located at the hut is not accessible.

Comments

- Happy Father's Day!!

Daily Coverage

Estimated Cloud Cover Key

Green:	Yellow:	Red:
0-10%	11-50%	>50%

D00|N10D

Line #	1	2	3	4	5	6	7	8	9	10	11	12	13	14	15	16	17	18	19	20
Lidar	✓	✓	✓	✓	✓	✓	✓	✓	✓	✓	✓	✓	✓	✓	✓	✓	✓	✓	✓	✓
Spectrometer	✓	✓	✓	✓	✓	✓	✓	✓	✓	✓	✓	✓	✓	✓	✓	✓	✓	✓	✓	✓
Camera	✓	✓	✓	✓	✓	✓	✓	✓	✓	✓	✓	✓	✓	✓	✓	✓	✓	✓	✓	✓
Cloud Cover																				

Line #	21	22	23	24
Lidar	✓	✓	✓	✓
Spectrometer	✓	✓	✓	✓
Camera	✓	✓	✓	✓
Cloud Cover				

Total number of lines flown: 24

D00|H10C

Line #	1	2	3	4
Lidar	✓	✓	✓	✓
Spectrometer	✓	✓	✓	✓
Camera	✓	✓	✓	✓
Cloud Cover				

Total number of lines flown: 4

Cumulative Domain Coverage

D10|ARIK (Arikaree River)

1	2	3	4	5	6	7	8	9	10	11	12	13	14	15	16	17	18	19	20	
21	22	23	24	25	26	27	28	29	30	31	32	33	34	35						

Flown: 91% (32/35)

Green: 26% (9/35)

Yellow: 46% (16/35)

Red: 20% (7/35)

D10|CPER (Central Plains Ecological Range)

1	2	3	4	5	6	7	8	9	10	11	12	13	14	15	16	17	18	19	20	
21	22	23	24	25	26	27	28													

Flown: 36% (10/28)

Green: 0% (0/28)

Yellow: 36% (10/28)

Red: 0% (0/28)

D10|RMNP_P1 (Rocky Mountain National Park Priority 1)

1	2	3	4	5	6	7	8	9	10	11	12	13	14	15	16	17	18	19	20	
21	22	23	24	25	26	27	28	29	30	31	32	33	34	35	36	37	38	39		

Flown: 0% (0/39)

Green: 0% (0/39)

Yellow: 0% (0/39)

Red: 0% (0/39)

D10|RMNP_P2 (Rocky Mountain National Park Priority 2)

40	41	42	43	44	45	46	47	48	49	50	51	52	53	54	55	56	57	58	59	
60	61	62	63	64																

Flown: 0% (0/25)

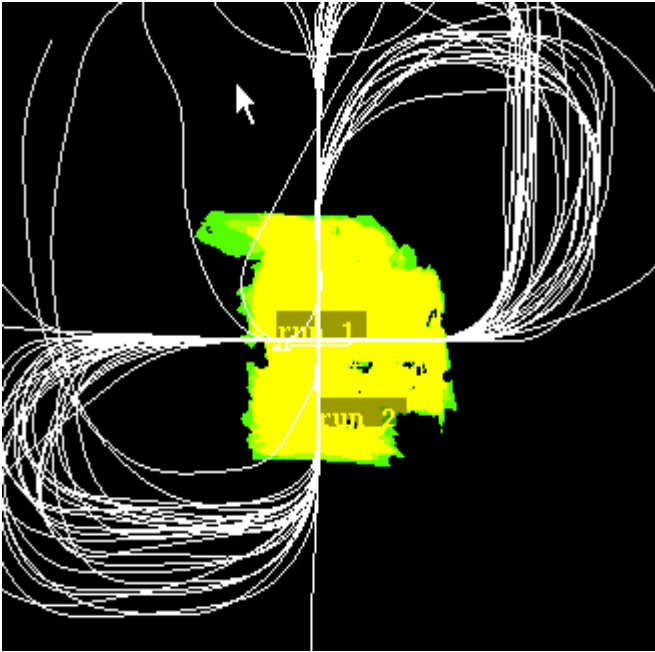
Green: 0% (0/25)

Yellow: 0% (0/25)

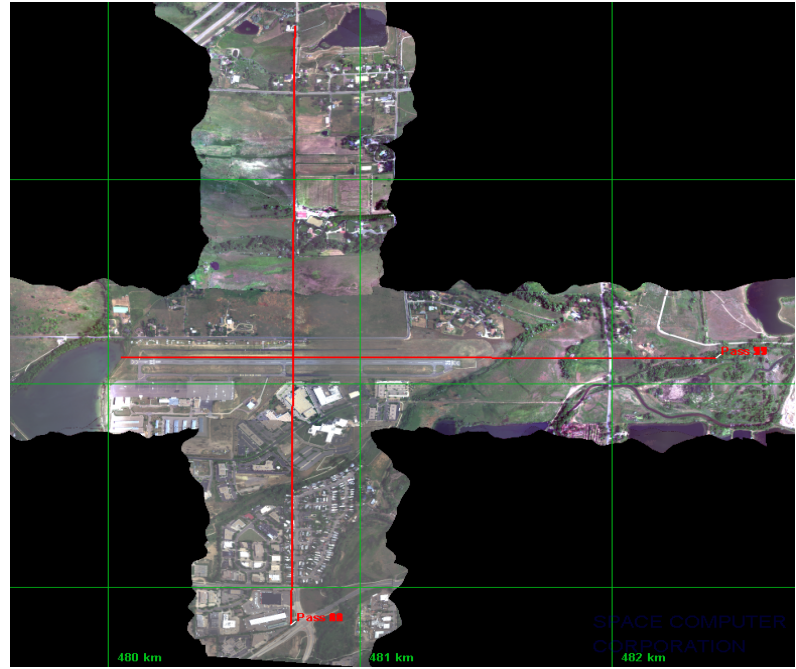
Red: 0% (0/25)

Flight Screenshots

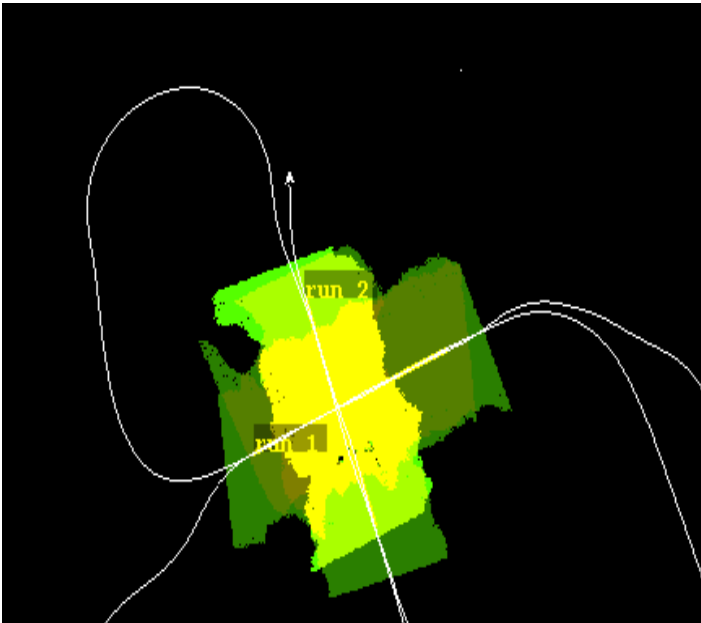
Lidar N10D



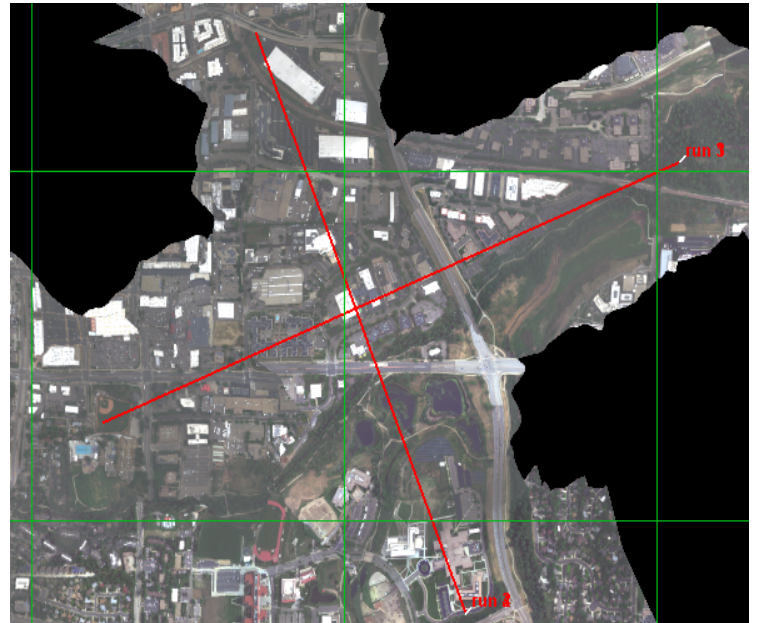
NIS N10D



Lidar H10C



NIS H10C



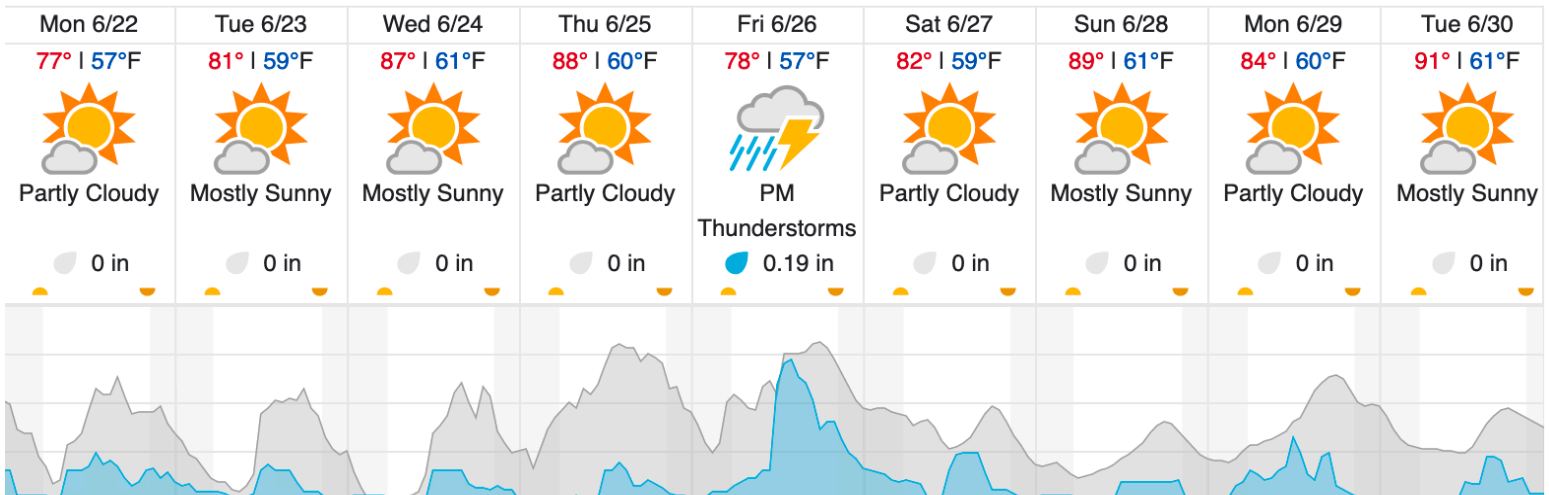
Pictures



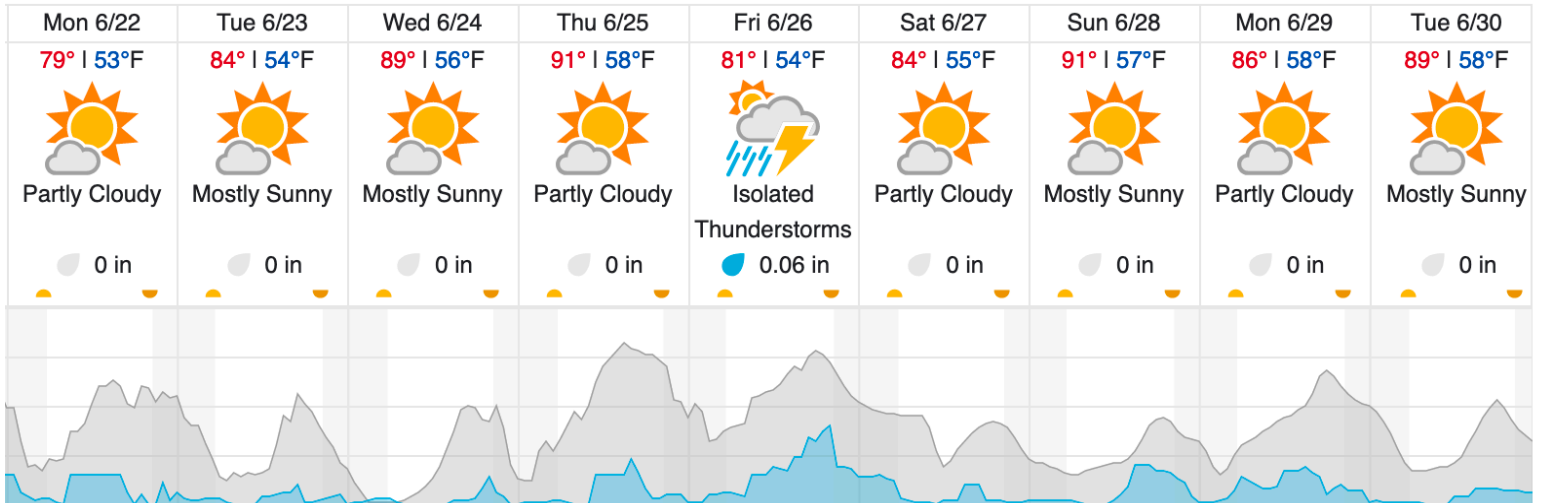
Lenticular clouds forming over the front range

Weather Forecast

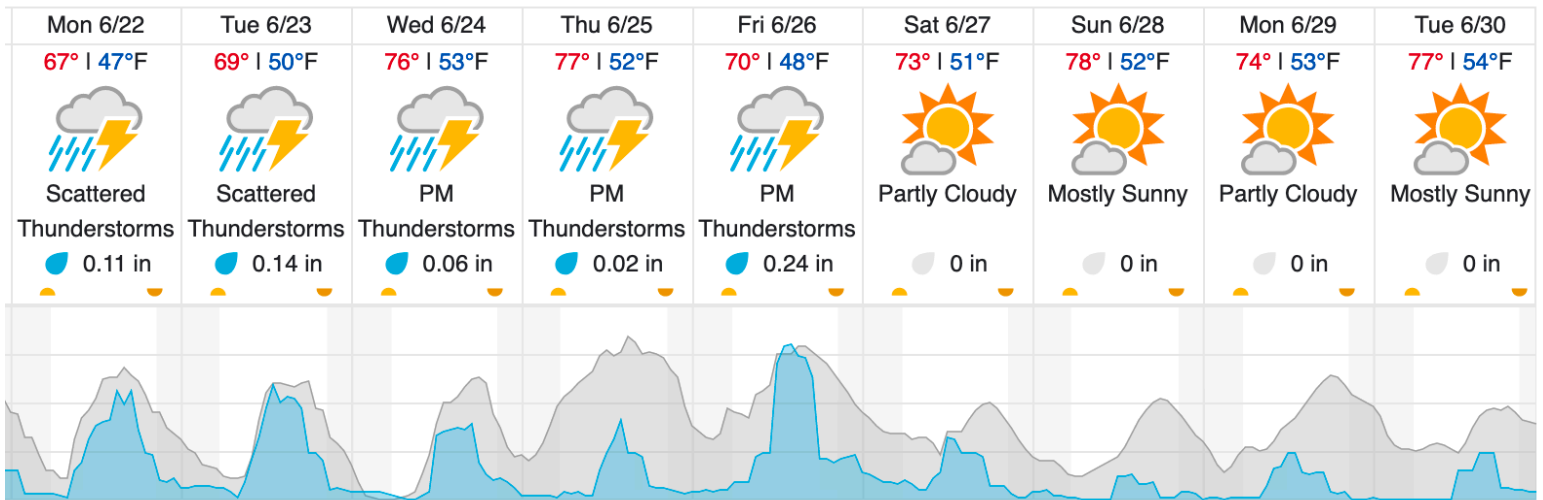
Boulder CO



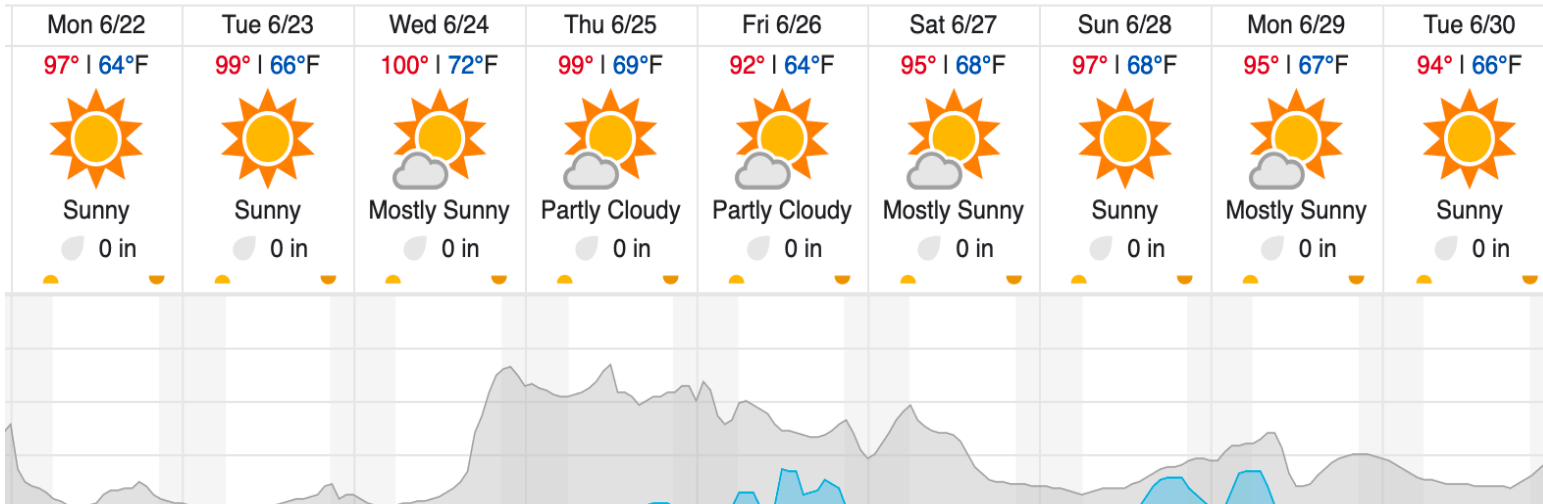
Nunn CO (CPER)



Estes Park CO (RMNP)



Moab UT (MOAB)



Cloud Cover (%) Chance of Precip. (%)

Flight Collection Plan for 22 June 2020

Flyority 1

Collection Area: Central Plains Ecological Range (CPER)

Flight Plan Name: D10_CPER_C1_P1_v6_Q780

On-Station Time: 15:20 UTC / 09:20L

Flyority 2

Collection Area: Rocky Mountain National Park (RMNP)

Flight Plan Name: D10_RMNP_R2_P1_v2_Q780

On-Station Time: 15:20 UTC / 09:20L

Flyority 3

Collection Area: Moab (MOAB) – Moab, UT

Flight Plan Name: D13_MOAB_R1_P1_v3_Q780

On-Station Time: 15:30 UTC / 09:30L

Flyority 4

Collection Area: Arikaree River (ARIK) – Arickaree, CO

Flight Plan Name: D10_ARIK_A1_P2_v3_Q780

On-Station Time: 15:10 UTC / 09:10L

Flight Crew: Mitch Haynes (Lidar), Elissa Barris (NIS), Cameron Chapman (Ground)

Flight Collection Plan for 23 June 2020

Flyorities: Same as previous day

Flight Crew: Elissa Barris (Lidar), Cameron Chapman (NIS), Mitch Haynes (Ground)