



## Payload 3 Daily Flight Report



**Date:** 2020-08-11

**Flight Campaign ID:** P3C1

**Airport, FBO ID, City:** Rhinelander-Oneida County Airport (KRHI) - Rhinelander, WI

**Domain:** 05 (Great Lakes)

**Sites Flown:** STEI\_TREE\_P1 (Steigerwaldt Land Services and Treehaven Priority 1), UNDE (University of Notre Dame Environmental Research Center)

**Days left in Domain:** 7

**Report Author:** Elissa Barris

**Lidar Operators:** Elissa Barris

**Spectrometer Operators:** Mitch Haynes

**Pilots:** Mike Francis, Lane Taylor

**Ground Crew:** Cameron Chapman

**Flight Hours:** 04:44

**Hours until maintenance:** 44.67

**GPS Instruments:** AOP\_UNDE, WISCORS-RHER

### Summary

Despite setbacks this morning from troubleshooting the spectrometer, skies remained clear the majority of the day and allowed for a full flight of green collection. The Priority 1 and 2 flight boxes were completed in green conditions.

### Concerns

NIS data transfer via the framegrabber fiberoptic cable was not working upon startup this morning, resulting in a blank display on the DCC software. After conferring with the lab, a full system power cycle was conducted which solved the problem.

### Comments

None.

### Daily Coverage

Estimated Cloud Cover Key

Green:	Yellow:	Red:
0-10%	11-50%	>50%

### D05 | UNDE

Line #	2	3	4	5	6	7	8	9	10	11	12	13	14	15	16	17	18	25	26	27
Lidar	✓	✓	✓	✓	✓	✓	✓	✓	✓	✓	✓	✓	✓	✓	✓	✓	✓	✓	✓	✓
Spectrometer	✓	✓	✓	✓	✓	✓	✓	✓	✓	✓	✓	✓	✓	✓	✓	✓	✓	✓	✓	✓
Camera	✓	✓	✓	✓	✓	✓	✓	✓	✓	✓	✓	✓	✓	✓	✓	✓	✓	✓	✓	✓
Cloud Cover																				

Line #	28	29
Lidar	✓	✓
Spectrometer	✓	✓
Camera	✓	✓
Cloud Cover		

Total number of lines flown: 22

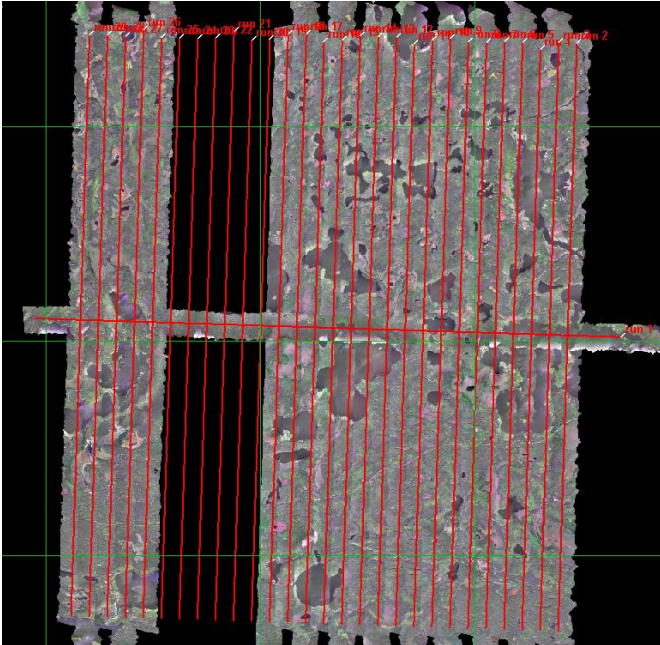
D05|STEI\_TREE\_P1

Line #	2	3	4	5	6	7	8	9	10	11	12
Lidar	✓	✓	✓	✓	✓	✓	✓	✓	✓	✓	✓
Spectrometer	✓	✓	✓	✓	✓	✓	✓	✓	✓	✓	✓
Camera	✓	✓	✓	✓	✓	✓	✓	✓	✓	✓	✓
Cloud Cover											

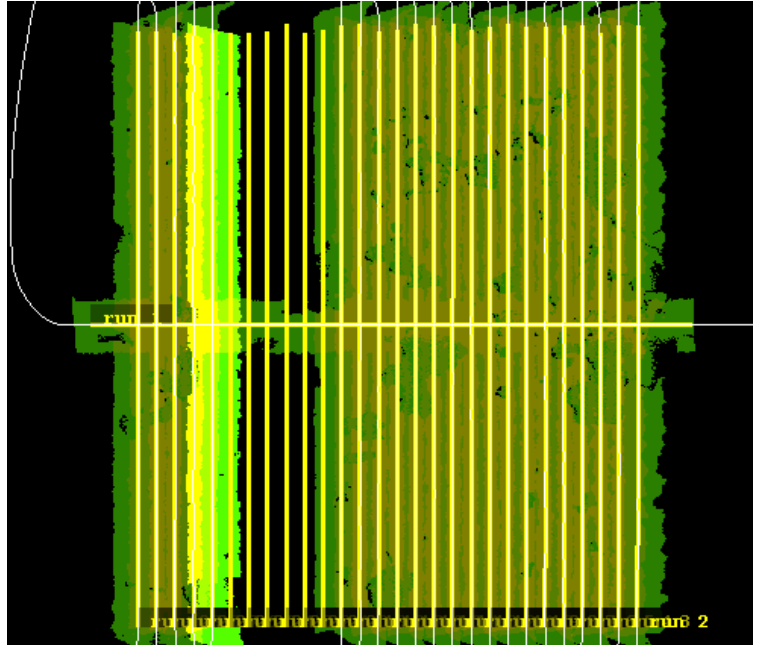
Total number of lines flown: 11

Flight Screenshots

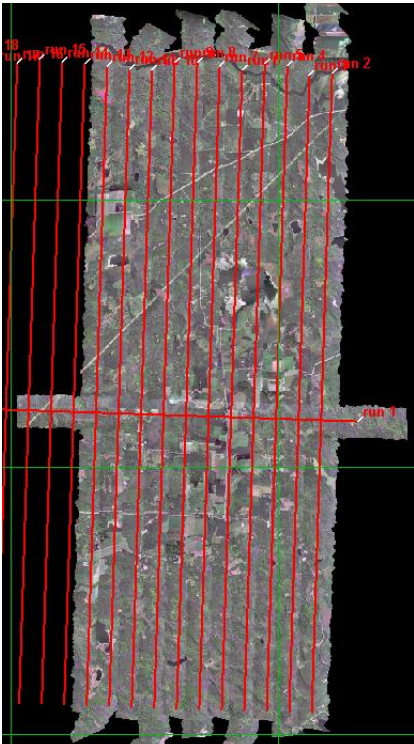
NIS: UNDE



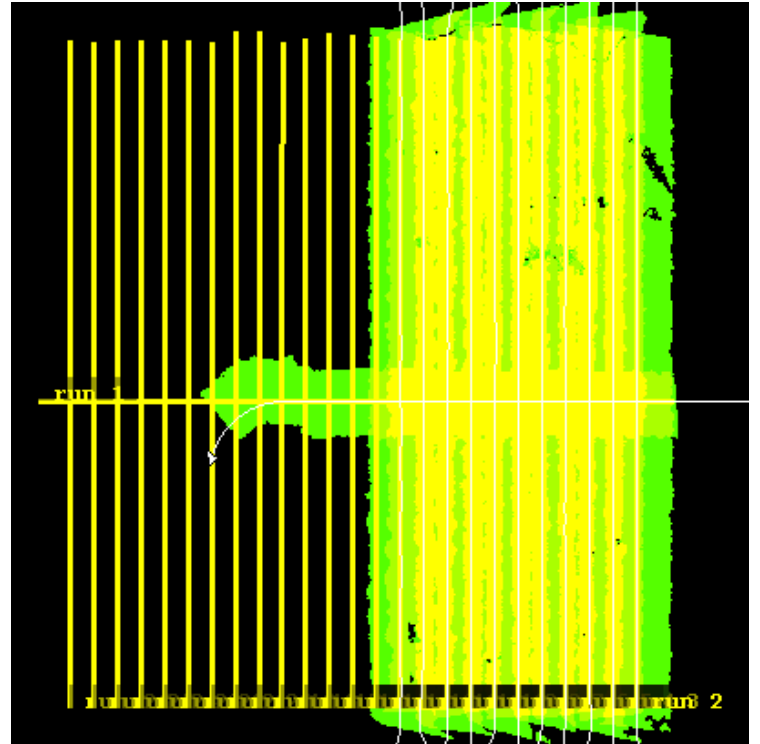
LiDAR: UNDE



NIS: STEI\_TREE



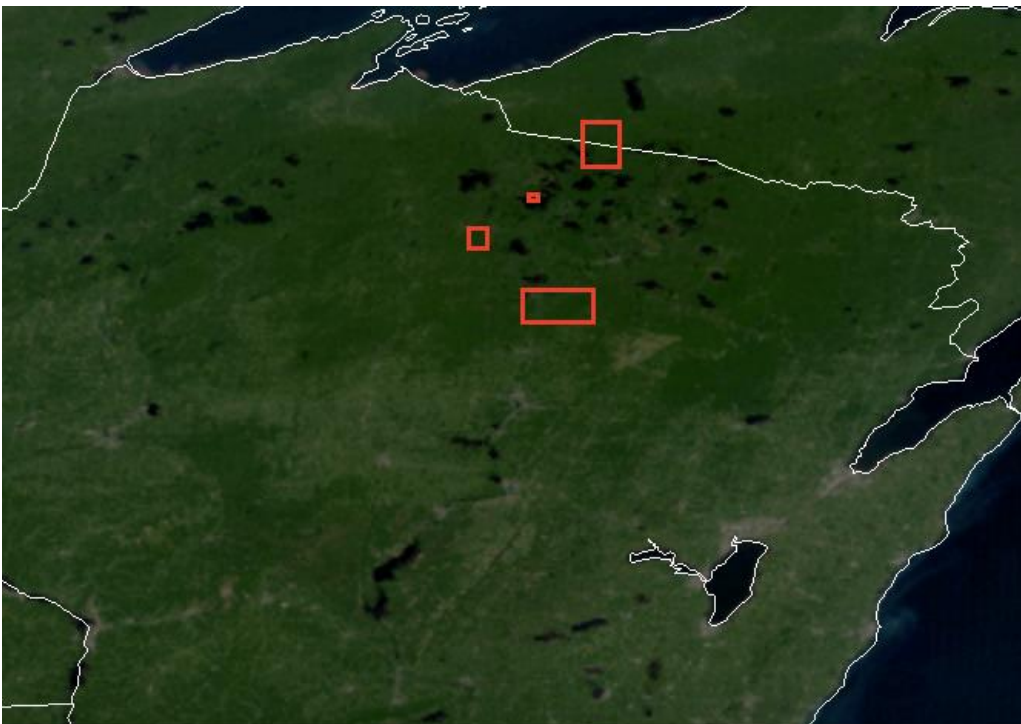
LiDAR: STEI\_TREE



## Pictures



Blue skies over the lakes of UNDERC this morning.



Incredibly clear skies over the region as seen in GOES satellite imagery.



Tower camera at UNDE



Tower camera at STEI\_TREE

### Cumulative Domain Coverage

#### D05 | CHEQ (Chequamegon-Nicolet National Forest)

2	3	4	5	6	7	8	9	10	11	12	13	14	15	16	17
---	---	---	---	---	---	---	---	----	----	----	----	----	----	----	----

Flown: 0% (0/16)  
 Green: 0% (0/16)  
 Yellow: 0% (0/16)  
 Red: 0% (0/16)

#### D05 | LIRO (Little Rock Lake)

2	3	4	5	6	7	8
---	---	---	---	---	---	---

Flown: 0% (0/7)  
 Green: 0% (0/7)  
 Yellow: 0% (0/7)  
 Red: 0% (0/7)

#### D05 | STEI\_TREE\_P1 (Steigerwaldt Land Services and Treehaven Priority 1)

2	3	4	5	6	7	8	9	10	11	12	13	14	15	16	17	18	19	20	21
22	23	24	25	26															

Flown: 100% (25/25)  
 Green: 100% (25/25)  
 Yellow: 0% (0/25)  
 Red: 0% (0/25)

#### D05 | STEI\_TREE\_P2 (Steigerwaldt Land Services and Treehaven Priority 2)

27	28	29	30	31	32	33	34	35	36	37	38	39	40	41	42	43	44
----	----	----	----	----	----	----	----	----	----	----	----	----	----	----	----	----	----

Flown: 100% (18/18)  
 Green: 0% (0/18)  
 Yellow: 0% (0/18)  
 Red: 100% (18/18)

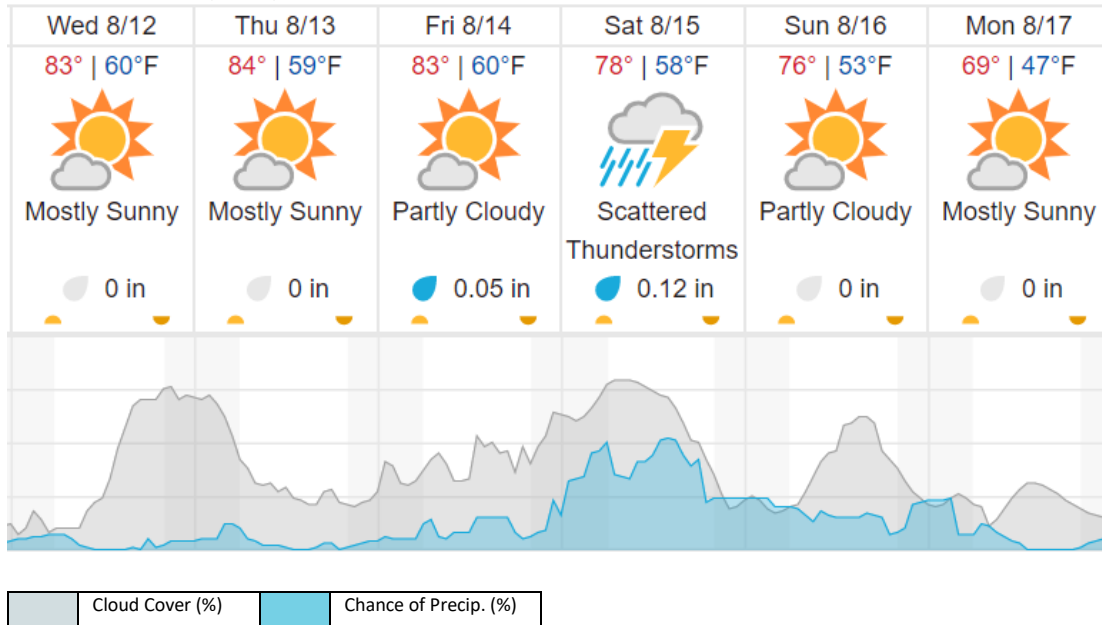
#### D05 | UNDE (University of Notre Dame Environmental Research Center)

2	3	4	5	6	7	8	9	10	11	12	13	14	15	16	17	18	19	20	21
22	23	24	25	26	27	28	29												

Flown: 100% (28/28)  
 Green: 100% (28/28)  
 Yellow: 0% (0/28)  
 Red: 0% (0/28)

## Weather Forecast

Rhineland, WI (KRHI)



## Flight Collection Plan for 12 August 2020

### Flyority 1

Collection Area: Chequamegon-Nicolet National Forest (CHEQ)

Flight Plan Name: D05\_CHEQ\_R2\_P1\_v3\_Q780

On-station Time: 1000 L / 1500 UTC

### Flyority 2

Collection Area: Little Rock Lake (LIRO)

Flight Plan Name: D05\_LIRO\_A1\_P2\_v2\_Q780

On-station Time: 1000 L / 1500 UTC

### Flyority 3 (If Green)

Collection Area: Steigerwaldt Land Services – Treehaven (STEI-TREE) Priority 2 Flight Box

Flight Plan Name: D05\_STEI\_TREE\_R1\_P2\_v3\_Q780

On-station Time: 1000 L / 1500 UTC

**Crew:** Mitch Haynes (Lidar), Cameron Chapman (NIS), Elissa Barris (Ground/GPS)