



Payload 2 Daily Flight Report



Date: 2020-08-14

Flight Campaign ID: P2C1

Airport, FBO ID, City: Boulder Municipal Airport (KBDU) - Boulder, CO

Domain: 00 (Training & Calibration)

Sites Flown: R10A (Table Mountain Radiometric Calibration), W10B (Wiggle Timing Test)

Days left in Domain: 17

Report Author: John Adler

Lidar Operators: John Adler

Flight Hours: 01:35

Spectrometer Operators: Robb Walker

Hours until maintenance: 20.32

Pilots: Chad Evans, Stephen Brawders

GPS Instruments: AOP_KBDU, C-TMGO

Ground Crew: Ivana Vu

Summary

The new 150M pixel camera was installed in the morning, followed by the Wiggle Test flight to verify its functionality. This was followed by two sequences of the Table Mountain Radiometric Calibration flights with tarps. All systems worked well, but the smokey atmosphere will have effects on the images.

Concerns

None.

Comments

Nice job by Ian Crocker getting the new camera put in!

Daily Coverage

Estimated Cloud Cover Key

Green:	Yellow:	Red:
0-10%	11-50%	>50%

D00|W10B

Line #	1	2
Lidar	✓	✓
Spectrometer	✓	✓
Camera	✓	✓
Cloud Cover		

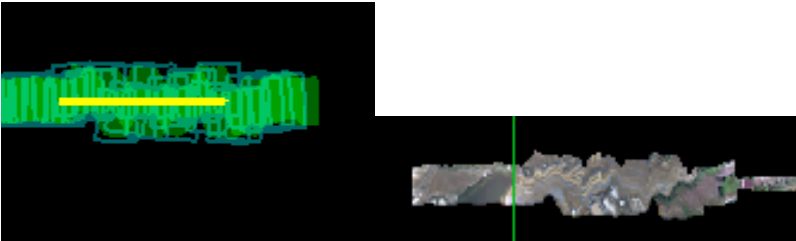
Total number of lines flown: 2

D00|R10A

Line #	1	2	3	4	5
Lidar					
Spectrometer	✓	✓	✓	✓	✓
Camera	✓	✓	✓	✓	✓
Cloud Cover					

Total number of lines flown: 10 (two sequences of 5)

Flight Screenshots



Wiggle Test

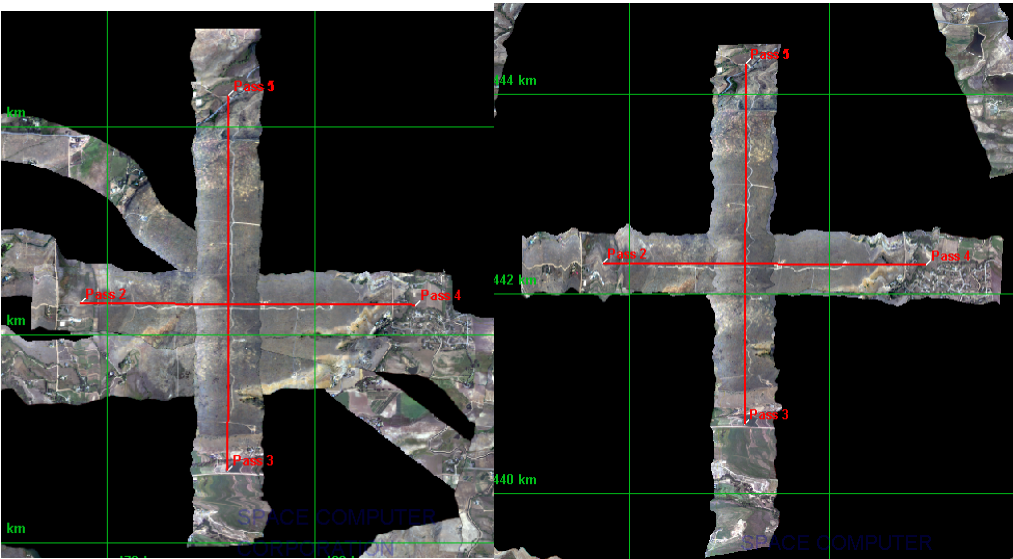


Table Mountain flights

Cumulative Domain Coverage

D00 B10B (Complete Greeley Boresight Geocalibration - 1500m, 1000m, 500m)																			
1	2	3	4	5	6	7	8	9	10	11	12	13	14	15	16	17	18	19	20

Flown: 100% (20/20)
Green: 0% (0/20)
Yellow: 100% (20/20)
Red: 0% (0/20)

D00|CPER (Satellite Overpass Coincident Collection - Central Plains Ecological Range)

1	2	3	4	5	6	7	8	9	10	11	12	13	14	15	16	17	18	19	20
21	22	23	24	25	26	27	28												

Flown: 0% (0/28)

Green: 0% (0/28)

Yellow: 0% (0/28)

Red: 0% (0/28)

D00|F10A (D10 BRDF Flight - Central Plains Ecological Range)

1	2	3	4	5	6	7	8	9	10	11	12	13	14	15	16	17	18	19	20
---	---	---	---	---	---	---	---	---	----	----	----	----	----	----	----	----	----	----	----

Flown: 0% (0/20)

Green: 0% (0/20)

Yellow: 0% (0/20)

Red: 0% (0/20)

D00|H10B (NEON Headquarters Lidar Test - modified cross-track)

1	2	3	4
---	---	---	---

Flown: 100% (4/4)

Green: 50% (2/4)

Yellow: 50% (2/4)

Red: 0% (0/4)

D00|N10C (Nominal Runway at KBDU - Optech)

1	2	3	4	5	6	7	8	9	10	11	12	13	14
---	---	---	---	---	---	---	---	---	----	----	----	----	----

Flown: 100% (14/14)

Green: 0% (0/14)

Yellow: 0% (0/14)

Red: 100% (14/14)

D00|O10A (NIS Offset)

1	2	3	4	5
---	---	---	---	---

Flown: 100% (5/5)

Green: 100% (5/5)

Yellow: 0% (0/2)

Red: 0% (0/2)

D00|R10A (Table Mountain Radiometric Calibration)

1	2	3	4	5
---	---	---	---	---

Flown: 100% (5/5)

Green: 100% (5/5)

Yellow: 0% (0/5)

Red: 0% (0/5)

D00|W10B (Wiggle Timing Test)

1	2
---	---

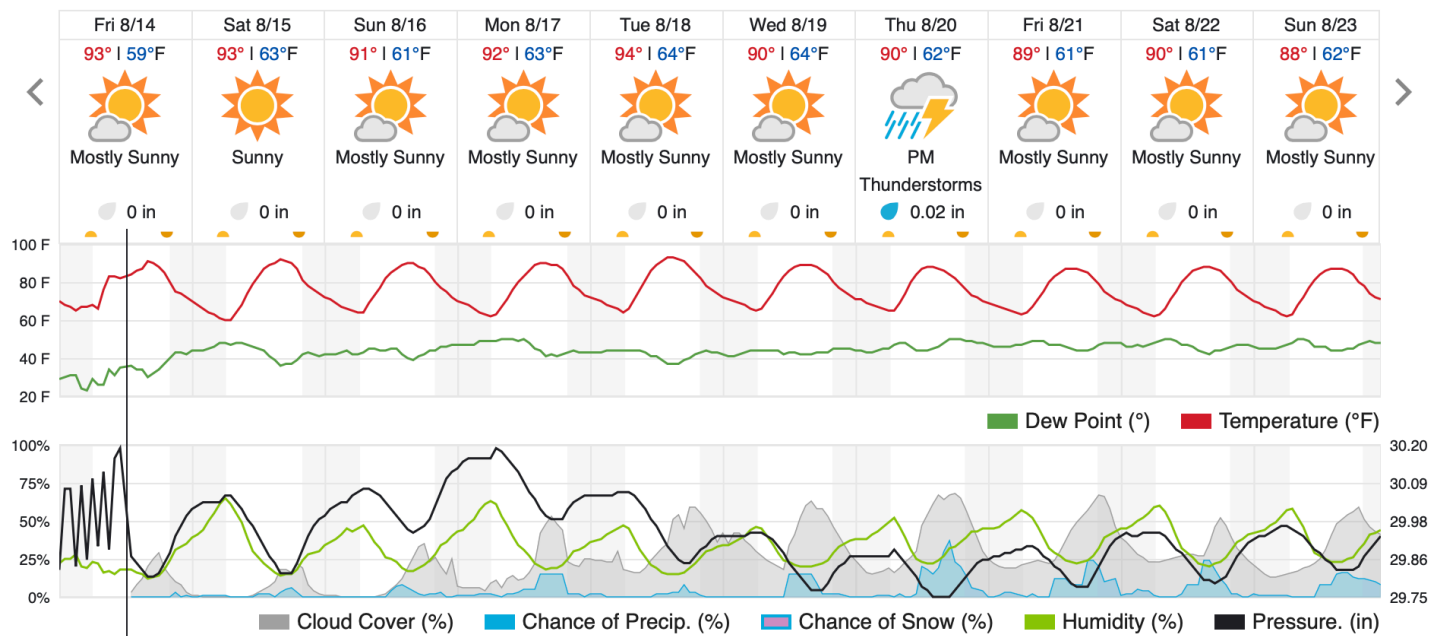
Flown: 100% (2/2)

Green: 0% (0/2)

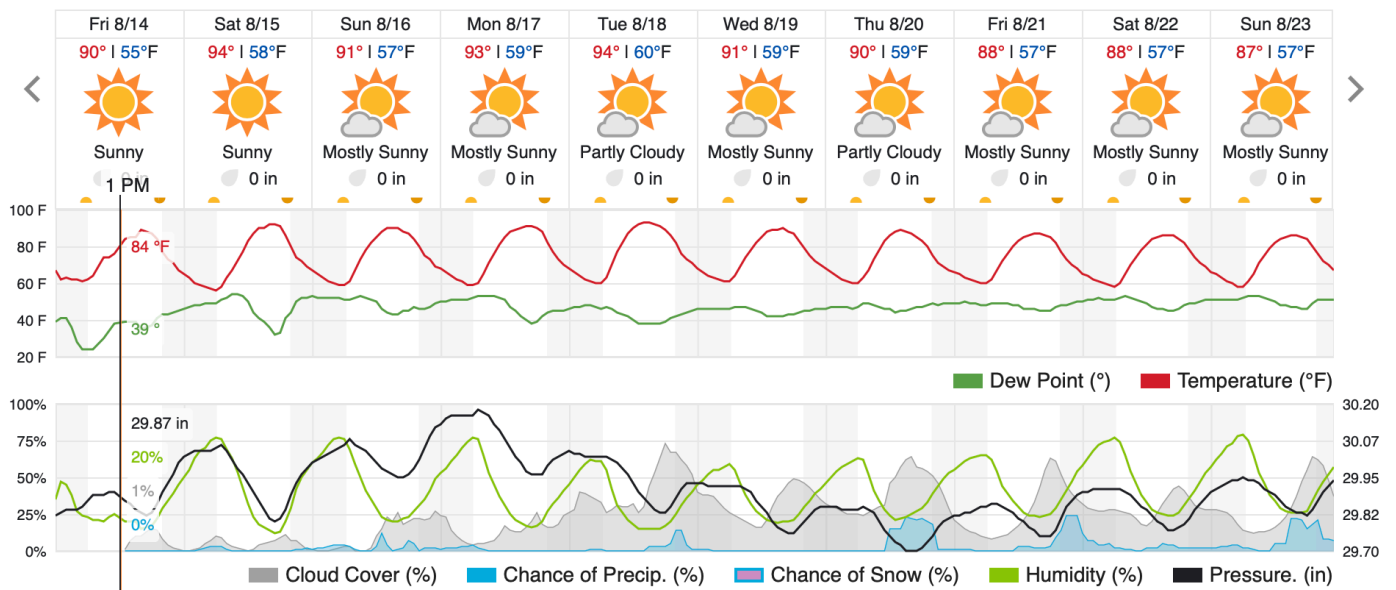
Yellow: 0% (0/2)

Red: 100% (2/2)

Weather Forecast Boulder, CO



Nunn, CO (CPER)



Flight Collection Plan for 15 August 2020

Flyority 1

Collection Area: Radiometric Calibration at Table Mountain

Flight Plan Name: D10_R10A_Radiometric_Calibration_Table_Mountain_v1.pln

On-station Time: 0950 – 1620 Local / 1550 – 2220 UTC

Flyority 2

Collection Area: Satellite Overpass Coincident Collection – Central Plains Ecological Range (only if conditions are “green”)

Flight Plan Name: D10_CPER_C1_P1_v4.pln

On-station Time: 0950 – 1620 Local / 1550 – 2220 UTC

Flyority 3

Collection Area: D10 BRDF Flight – Central Plains Ecological Range (only if conditions are “green”)

Flight Plan Name: D10_F10A_BRDF_v1.pln

On-station Time: 0950 – 1620 Local / 1550 – 2220 UTC

Crew members: Robb (Lidar), John (NIS), Mike (Ground); Bridget, Dave (Tarps)

Flight Collection Plan for 16 August 2020

Flyority: Same as previous day

Crew members: John (Lidar), Robb (NIS), Mike (Ground); Bridget, Dave (Tarps)