



Payload 3 Daily Flight Report



Date: 2020-08-26

Flight Campaign ID: P3C1

Airport, FBO ID, City: Boulder Municipal Airport (KBDU) - Boulder, CO

Domain: 00 (Training & Calibration)

Sites Flown: N10D (Nominal Runway at KBDU - Riegl)

Days left in Domain: 22

Report Author: Cameron Chapman

Lidar Operators: Robb Walker

Flight Hours: 02:03

Spectrometer Operators: Cameron Chapman

Hours until maintenance: 29.83

Pilots: Justin Eddington, Jeff Quintanilla

GPS Instruments: AOP_KBDU

Ground Crew: Mitch Haynes

Summary

Visibility improved some today allowing P3 to collect the Nominal Runway calibration flight. Cloud cover and smoke still preventing more restrictive calibration and CPER/RMNP test flights.

Concerns

None

Comments

None

Daily Coverage

Estimated Cloud Cover Key

Green:	Yellow:	Red:
0-10%	11-50%	>50%

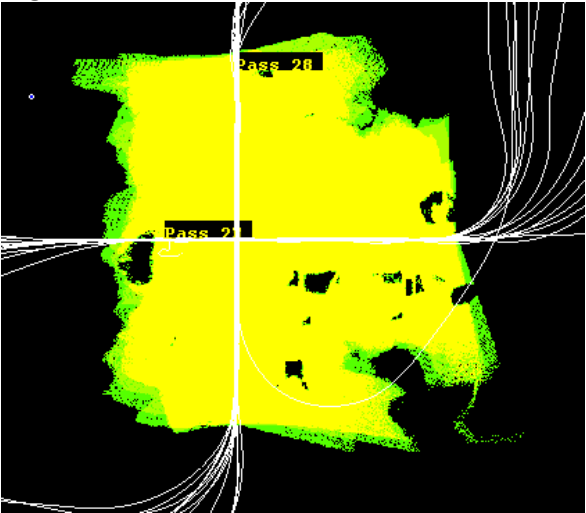
D00|N10D

Line #	1	2	3	4	5	6	7	8	9	10	11	12	13	14	15	16	17	18	19	20
Lidar	✓	✓	✓	✓	✓	✓	✓	✓	✓	✓	✓	✓	✓	✓	✓	✓	✓	✓	✓	✓
Spectrometer	✓	✓	✓	✓	✓	✓	✓	✓	✓	✓	✓	✓	✓	✓	✓	✓	✓	✓	✓	✓
Camera	✓	✓	✓	✓	✓	✓	✓	✓	✓	✓	✓	✓	✓	✓	✓	✓	✓	✓	✓	✓
Cloud Cover																				

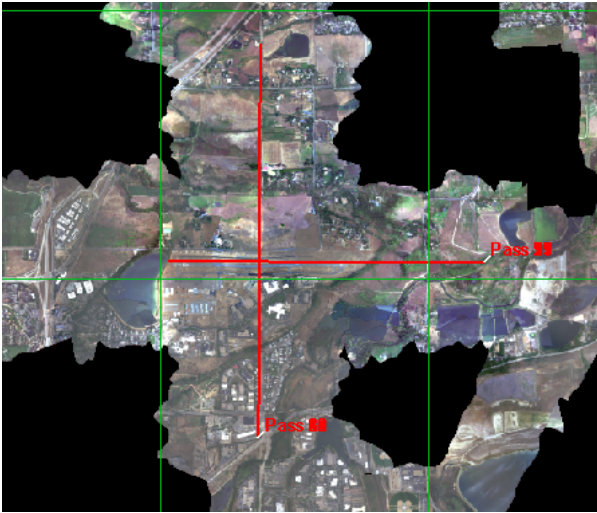
Line #	21	22	23	24
Lidar	✓	✓	✓	✓
Spectrometer	✓	✓	✓	✓
Camera	✓	✓	✓	✓
Cloud Cover				

Total number of lines flown: 24

Flight Screenshots



N10D (Lidar)



N10D (NIS)

Pictures



Boulder under very hazy skies

Cumulative Domain Coverage

D00|B10E (Riegl Boresight Calibration - 1600m, 1000m, 500m)

1	2	3	4	5	6	7	8	9	10	11	12	13	14	15	16	17	18	19	20
---	---	---	---	---	---	---	---	---	----	----	----	----	----	----	----	----	----	----	----

Flown: 0% (0/20)

Green: 0% (0/20)

Yellow: 0% (0/20)

Red: 0% (0/20)

D00|CPER (Satellite Overpass Coincident Collection & 1000m Multiple Altitude Test Flight - CPER)

11	12	13	14	15	16	17	18	19	20	21	22	23	24
----	----	----	----	----	----	----	----	----	----	----	----	----	----

Flown: 0% (0/14)

Green: 0% (0/14)

Yellow: 0% (0/14)

Red: 0% (0/14)

D00|F10A (D10 BRDF Flight - CPER)

1	2	3	4	5	6	7	8	9	10	11	12	13	14	15	16	17	18	19	20
---	---	---	---	---	---	---	---	---	----	----	----	----	----	----	----	----	----	----	----

Flown: 0% (0/20)

Green: 0% (0/20)

Yellow: 0% (0/20)

Red: 0% (0/20)

D00|H10C (NEON Headquarters Lidar Test - Riegl)

1	2	3	4
---	---	---	---

Flown: 100% (4/4)

Green: 0% (0/4)

Yellow: 0% (0/4)

Red: 100% (4/4)

D00|K10A (2000m Multiple Altitude Test Flight - CPER)

6	7	8	9	10	11
---	---	---	---	----	----

Flown: 0% (0/6)

Green: 0% (0/6)

Yellow: 0% (0/6)

Red: 0% (0/6)

D00|K10B (2000m Multiple Altitude Test Flight - RMNP)

2	3	4	5	6	7
---	---	---	---	---	---

Flown: 0% (0/6)

Green: 0% (0/6)

Yellow: 0% (0/6)

Red: 0% (0/6)

D00|N10D (Nominal Runway at KBDU - Riegl)

1	2	3	4	5	6	7	8	9	10	11	12	13	14	15	16	17	18	19	20
21	22	23	24	25	26														

Flown: 92% (24/26)

Green: 0% (0/26)

Yellow: 0% (0/26)

Red: 92% (24/26)

D00|O10B (NIS Offset - Riegl)

1	2
---	---

Flown: 0% (0/2)

Green: 0% (0/2)

Yellow: 0% (0/2)

Red: 0% (0/2)

D00|R10C (Table Mountain Radiometric Calibration - Riegl)

1	2	3	4	5
---	---	---	---	---

Flown: 0% (0/5)

Green: 0% (0/5)

Yellow: 0% (0/5)

Red: 0% (0/5)

D00|RMNP (1000m Multiple Altitude Test Flight - RMNP)

2	3	4	5	6	7	8	9	10	11	12	13	14	15	16	17	18	19
---	---	---	---	---	---	---	---	----	----	----	----	----	----	----	----	----	----

Flown: 0% (0/18)

Green: 0% (0/18)

Yellow: 0% (0/18)

Red: 0% (0/18)

D00|W10C (Wiggle Timing Test - Riegl)

1	2
---	---

Flown: 100% (2/2)

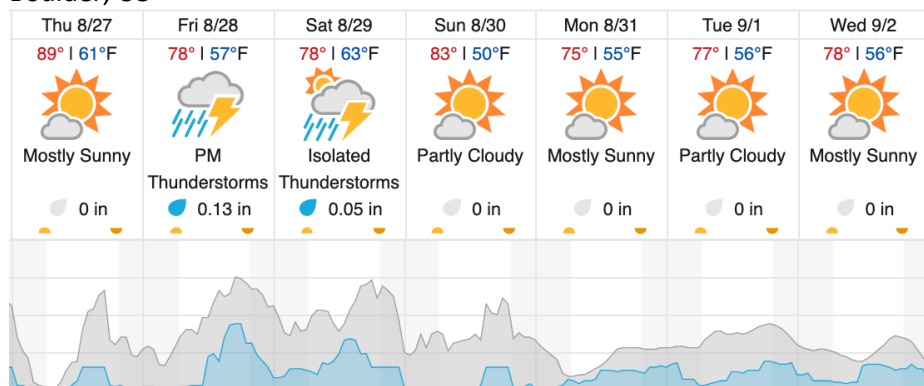
Green: 0% (0/2)

Yellow: 0% (0/2)

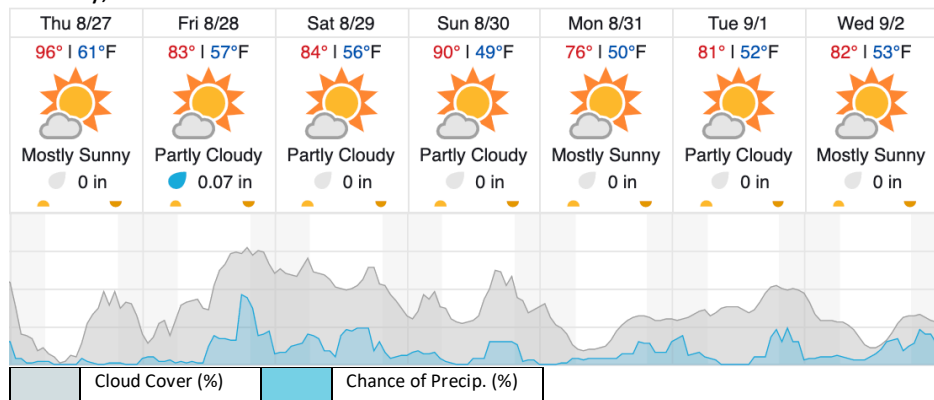
Red: 100% (2/2)

Weather Forecast

Boulder, CO



Greeley, CO



Flight Collection Plan for 27 August 2020

Flyority 1

Collection Area: Satellite Overpass Coincident Collection & 1000m Multiple Altitude Test Flight - CPER

Flight Plan Name: D10_CPER_C1_P1_v6_Q780

On-station Time: 1000 – 1600 Local / 1600 – 2200 UTC

Flyority 2

Collection Area: 2000m Multiple Altitude Flight - CPER

Flight Plan Name: D10_K10A_Multiple_Alt_2000m_v1

On-station Time: 1000 – 1600 Local / 1600 – 2200 UTC

Flyority 3

Collection Area: 1000m Multiple Altitude Test Flight - RMNP

Flight Plan Name: D10_RMNP_R2_P1_v2_Q780

On-station Time: 1000 – 1610 Local / 1600 – 2210 UTC

Flyority 4

Collection Area: 2000m Multiple Altitude Flight - RMNP

Flight Plan Name: D10_K10B_Multiple_Alt_v2

On-station Time: 1000 – 1610 Local / 1600 – 2210 UTC

Flyority 5

Collection Area: Table Mountain Radiometric Calibration

Flight Plan Name: D10_R10C_Rad_Cal_TBMT_v1_Q780

On-station Time: 1000 – 1610 Local / 1600 – 2210 UTC

Flyority 6

Collection Area: Riegl Boresight Calibration at Greeley

Flight Plan Name: D10_B10E_Boresight_1600m_Q780

On-station Time: 0900 – 1700 Local / 1500 – 2300 UTC

Flyority 7

Collection Area: NIS Offset Flight

Flight Plan Name: D10_O10B_NIS_Offset_v2_Q780

On-station Time: 0930 – 1640 Local / 1530 – 2240 UTC

Thurs 8/27 Crew: Cam (Lidar), Ivana (NIS), Robb (Ground)

Friday 8/28 Crew: Ivana (Lidar), Mitch (NIS), Cam (Ground)

Saturday 8/29 Crew: Mitch (Lidar), Robb (NIS), Ivana (Ground)