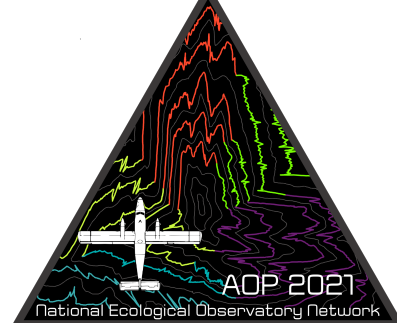




## Payload 1 Daily Flight Report



**Date:** 2021-04-06

**Flight Campaign ID:** P1C2

**Airport, FBO ID, City:** Boulder Municipal Airport (KBDU) - Boulder, CO

**Aircraft:** N331AR

**Domain:** 00 (Training & Calibration)

**Sites Flown:** V10F (Boulder City Nominal Training Flight)

**Days left in Domain:** 23

**Report Author:** John Adler

**Lidar Operators:** Michael Wussow

**Spectrometer Operators:** Robb Walker

**Pilots:** Scott Hayward, Ashley Taylor

**Adt'l Flight Crew:** John Adler

**Flight Hours:** 01:01

**Hours until maintenance:** 112.7

**GPS Instruments:** AOP\_KBDU

**Ground Crew:** Abe Morrison, Matt DeVoe

### Summary

Mike completed his Galaxy lidar check ride today flying V10F in the morning. In the afternoon rain precluded further flights.

### Concerns

- An error was noted in the Nominal Runway flight plan; John M. is correcting this now. We can't fly this plan until we have the new flight plan (should be a quick fix).
- HotelKit extraction from previous flights is still ongoing: Thanks to Andrew and Hale for continuing the debugging!

### Comments

Tomorrow Robb Walker will begin his Galaxy training.

### Daily Coverage

Estimated Cloud Cover Key

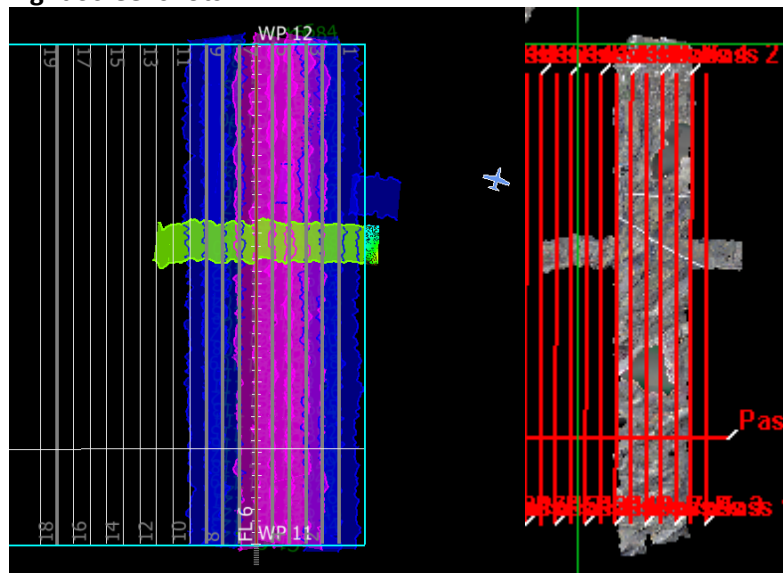
Green:	Yellow:	Red:
0-10%	11-50%	>50%

D00|N10F

Line #	1	2	3	4	5	6	7	8	9	10	11	12	13	14	15
Lidar	✓	✓	✓	✓	✓	✓	✓	✓	✓	✓	✓	✓	✓	✓	✓
Spectrometer	✓	✓	✓	✓	✓	✓	✓	✓	✓	✓	✓	✓	✓	✓	✓
Camera	✓	✓	✓	✓	✓	✓	✓	✓	✓	✓	✓	✓	✓	✓	✓
Cloud Cover															

Total number of lines flown: 15

Flight Screenshots



V10F Lidar

V10F NIS

Cumulative Domain Coverage

D00|B10F (Complete Greeley Boresight Geocalibration - 1500m, 1000m, 550m - Galaxy)

1	2	3	4	5	6	7	8	9	10	11	12	13	14	15	16	17	18	19	20
---	---	---	---	---	---	---	---	---	----	----	----	----	----	----	----	----	----	----	----

Flown: 100% (20/20)

Green: 100% (20/20)

Yellow: 0% (0/20)

Red: 0% (0/20)

D00|BLKF (Black Forest Waveform Range Test - Galaxy)

1	2	3	4	5	6	7	8	9	10	11	12	13	14	15	16	17	18	19	20
21																			

Flown: 0% (0/21)

Green: 0% (0/21)

Yellow: 0% (0/21)

Red: 0% (0/21)

D00|H10D (NEON Headquarters Lidar Validation - Galaxy)

1	2	3	4
---	---	---	---

Flown: 100% (4/4)

Green: 100% (4/4)

Yellow: 0% (0/4)

Red: 0% (0/4)

D00|N10F (Nominal Runway at KBDU - Galaxy)

1	2	3	4	5	6	7	8	9	10	11	12	13	14	15	16	17	18	19	20
21	22	23	24	25	26	27	28	29	30	31	32	33	34	35					

Flown: 43% (15/35)

Green: 0% (0/35)

Yellow: 0% (0/35)

Red: 43% (15/35)

## D00|O10C (NIS Offset - Galaxy)

1 2

Flown: 0% (0/2)

Green: 0% (0/2)

Yellow: 0% (0/2)

Red: 0% (0/2)

## D00|R10E (Table Mountain Radiometric Calibration - Galaxy)

1 2 3 4 5

Flown: 100% (5/5)

Green: 100% (5/5)

Yellow: 0% (0/5)

Red: 0% (0/5)

## D00|V10F (Boulder City Nominal - Galaxy)

1	2	3	4	5	6	7	8	9	10	11	12	13	14	15	16	17	18	19	20
21	22	23	24	25	26	27	28	29											

Flown: 14% (4/29)

Green: 0% (0/29)

Yellow: 0% (0/29)

Red: 14% (4/29)

## D00|W10D (Wiggle Timing Test - Galaxy)

1 2

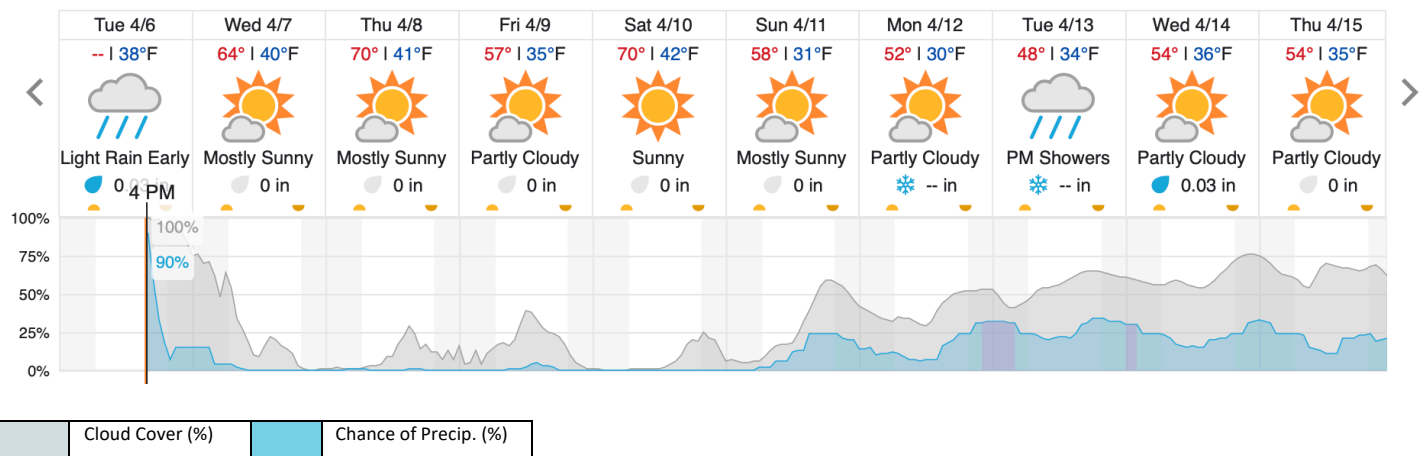
Flown: 100% (2/2)

Green: 100% (2/2)

Yellow: 0% (0/2)

Red: 0% (0/2)

## Weather Forecast



source: wunderground.com

## Flight Collection Plan for 7 April 2021

Flyority 1

Collection Area: [Functional Checkout Flight] -- Nominal Runway Survey Flight Plan

Name: D10\_N10F\_Nominal\_Rnwy\_v9\_PRM.xml

On-Station Time: Daylight – No solar angle restrictions.

Additional Considerations: Runway should not be wet, or snow covered.

### Flyority 2

Collection Area: Black Forest Waveform Range Test Flight

Flight Plan Name: D10\_BLKF\_Black\_Forest\_v3\_PRM.xml

On-station Time: Daylight – No solar angle restrictions.

Additional Considerations: Snow on ground / trees okay.

### Flyority 3

Collection Area: NIS Offset Flight

Flight Plan Name: D10\_O10C\_NIS\_Offset\_v2\_PRM.xml

On-station Time: 1600 UTC / 1000 L

Crew: Matt, Abe, Robb, Mike, John