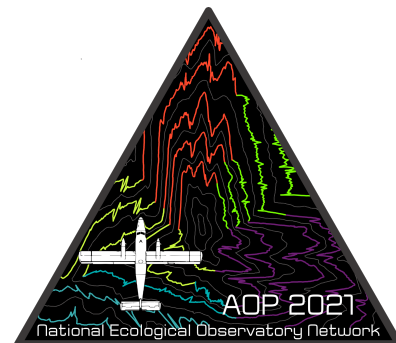




Payload 1 Daily Flight Report



Date: 2021-04-07

Flight Campaign ID: P1C2

Airport, FBO ID, City: Boulder Municipal Airport (KBDU) - Boulder, CO

Aircraft: N331AR

Domain: 00 (Training & Calibration)

Sites Flown: N10F (Nominal Runway at KBDU - Galaxy), V10F (Boulder City Nominal Training Flight)

Days left in Domain: 22

Report Author: Robb Walker

Lidar Operators: Robb Walker

Spectrometer Operators: Michael Wussow

Pilots: Ashley Taylor, Scott Hayward

Adt'l Flight Crew: John Adler

Flight Hours: 00:55, 00:46

Hours until maintenance: 111.08

GPS Instruments: AOP_KBDU

Ground Crew: Matt Devoe, Abe Morrison

Summary

Clouds parted this morning allowing crew to get back in the air and complete training flights, but high forecast winds aloft and crosswinds at KBDU prevented Nominal Runway from being completed.

Concerns

None

Comments

- Team B will take over calibration and training flights Thursday. Crew handoff in the morning.
- Calibration flights completed are being re-extracted as Hale and Andrew work through some last hotel kit code issues.
- Flight crew pleased with pilot display mounting modifications and especially increase in brightness. Thanks Abe/Matt!
- Robb Walker certified on Galaxy Lidar system.

Daily Coverage

Estimated Cloud Cover Key

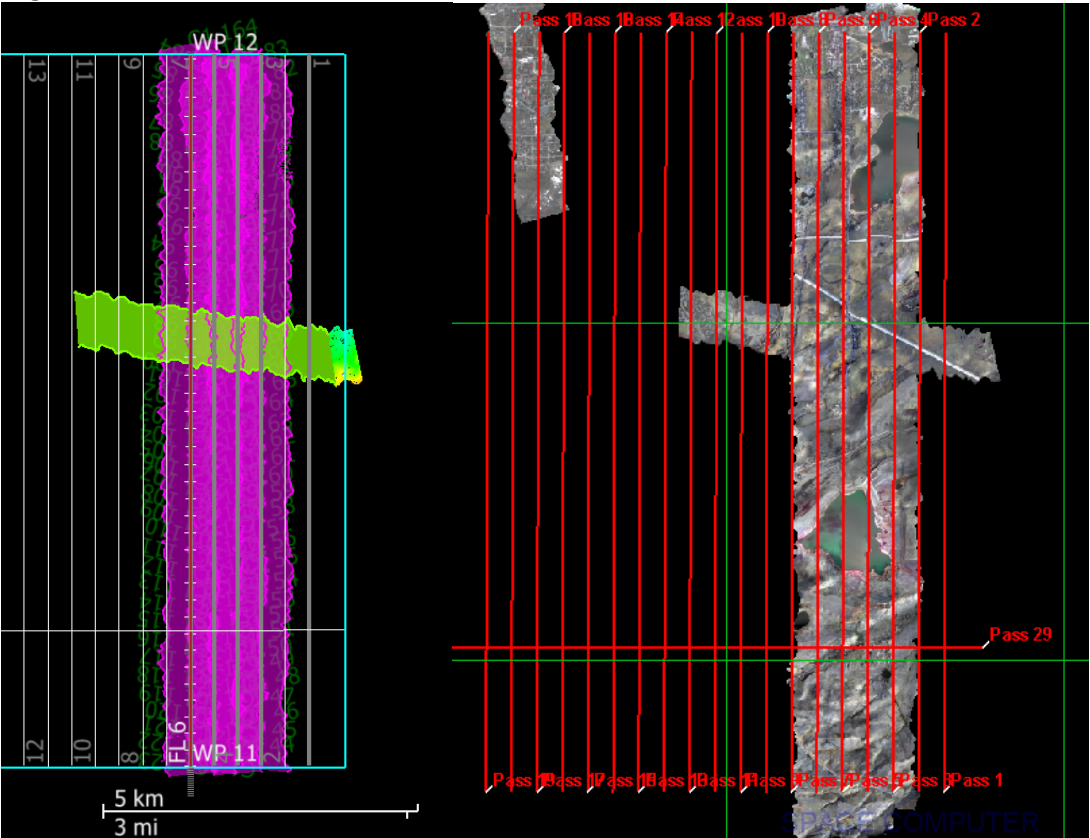
Green:	Yellow:	Red:
0-10%	11-50%	>50%

D00|N10F

Line #	5	6	7	8	9	10
Lidar	✓	✓	✓	✓	✓	✓
Spectrometer	✓	✓	✓	✓	✓	✓
Camera	✓	✓	✓	✓	✓	✓
Cloud Cover						

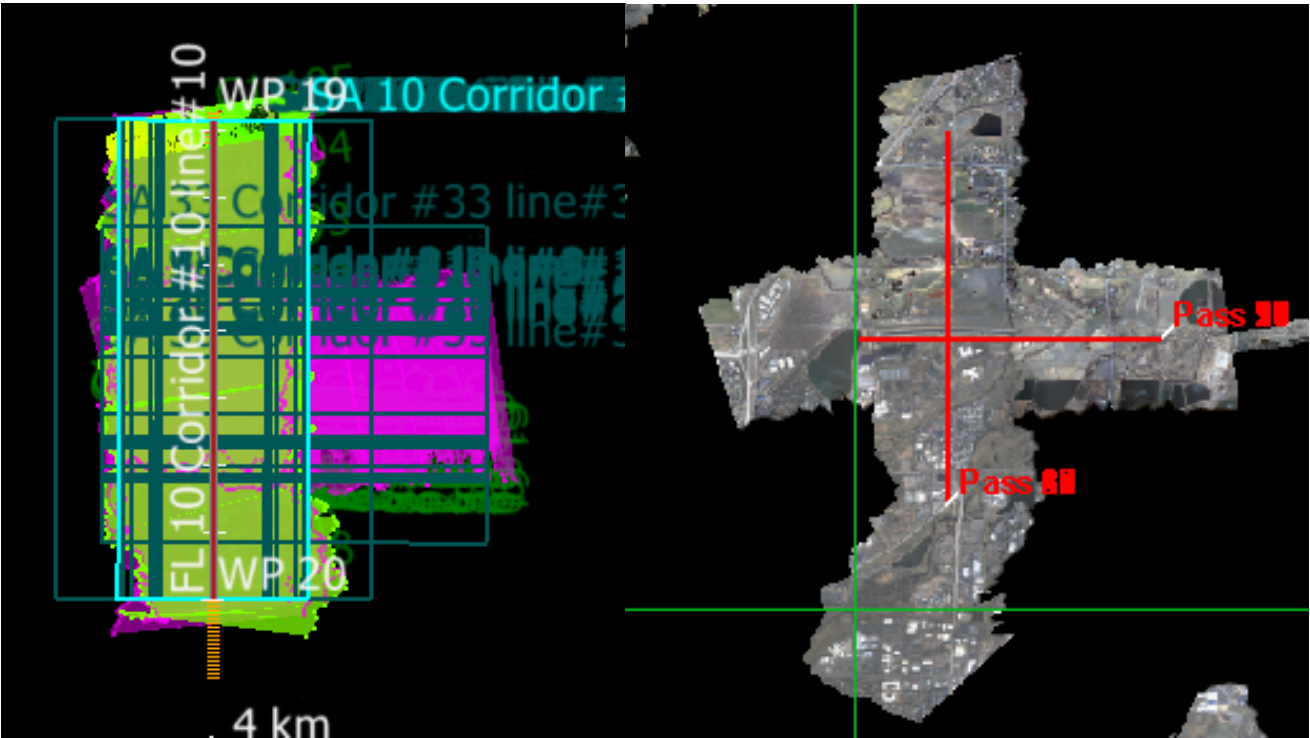
Total number of lines flown: 6

Flight Screenshots



V10F (Lidar)

V10F (NIS)



N10F (Lidar)

N10F (NIS)

Cumulative Domain Coverage

D00|B10F (Complete Greeley Boresight Geocalibration - 1500m, 1000m, 550m - Galaxy)

1	2	3	4	5	6	7	8	9	10	11	12	13	14	15	16	17	18	19	20
---	---	---	---	---	---	---	---	---	----	----	----	----	----	----	----	----	----	----	----

Flown: 100% (20/20)

Green: 100% (20/20)

Yellow: 0% (0/20)

Red: 0% (0/20)

D00|BLKF (Black Forest Waveform Range Test - Galaxy)

1	2	3	4	5	6	7	8	9	10	11	12	13	14	15	16	17	18	19	20
21																			

Flown: 0% (0/21)

Green: 0% (0/21)

Yellow: 0% (0/21)

Red: 0% (0/21)

D00|H10D (NEON Headquarters Lidar Validation - Galaxy)

1	2	3	4
---	---	---	---

Flown: 100% (4/4)

Green: 100% (4/4)

Yellow: 0% (0/4)

Red: 0% (0/4)

D00|N10F (Nominal Runway at KBDU - Galaxy)

1	2	3	4	5	6	7	8	9	10	11	12	13	14	15	16	17	18	19	20
21	22	23	24	25	26	27	28	29	30	31	32	33	34	35					

Flown: 43% (15/35)

Green: 0% (0/35)

Yellow: 0% (0/35)

Red: 43% (15/35)

D00|O10C (NIS Offset - Galaxy)

1	2
---	---

Flown: 0% (0/2)

Green: 0% (0/2)

Yellow: 0% (0/2)

Red: 0% (0/2)

D00|R10E (Table Mountain Radiometric Calibration - Galaxy)

1	2	3	4	5
---	---	---	---	---

Flown: 100% (5/5)

Green: 100% (5/5)

Yellow: 0% (0/5)

Red: 0% (0/5)

D00|V10F (Boulder City Nominal - Galaxy)

1	2	3	4	5	6	7	8	9	10	11	12	13	14	15	16	17	18	19	20
21	22	23	24	25	26	27	28	29											

Flown: 34% (10/29)

Green: 14% (4/29)

Yellow: 0% (0/29)

Red: 21% (6/29)

D00|W10D (Wiggle Timing Test - Galaxy)

1 2

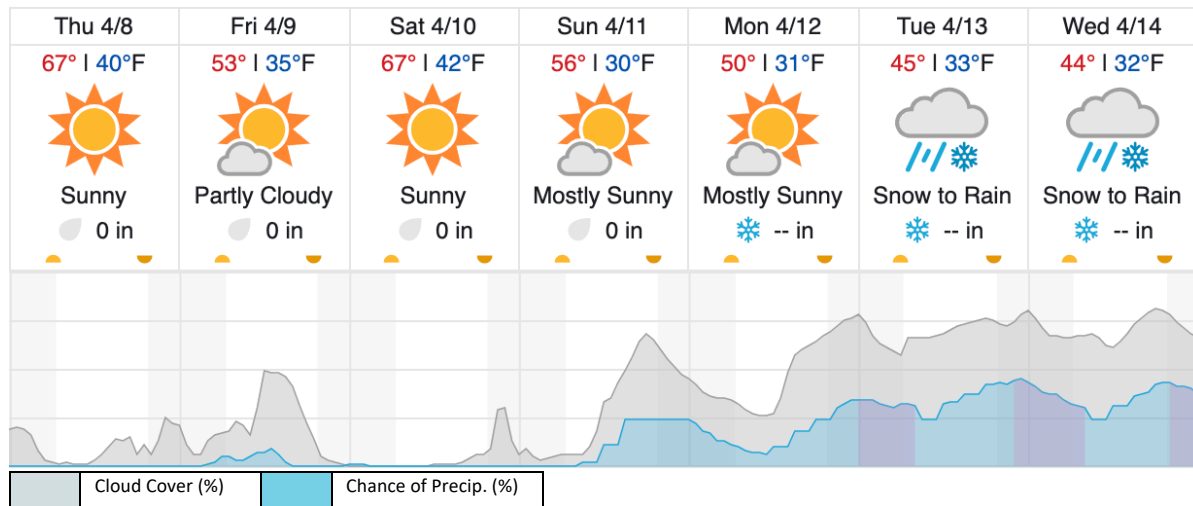
Flown: 100% (2/2)

Green: 100% (2/2)

Yellow: 0% (0/2)

Red: 0% (0/2)

Weather Forecast



source: wunderground.com

Flight Collection Plan for 8 April 2021

Flyority 1

Collection Area: [Functional Checkout Flight] -- Nominal Runway Survey Flight Plan

Name: D10_N10F_Nominal_Rnwy_v9_PRM.xml

On-Station Time: Daylight – No solar angle restrictions.

Additional Considerations: Runway should not be wet, or snow covered.

Flyority 2

Collection Area: Black Forest Waveform Range Test Flight

Flight Plan Name: D10_BLKF_Black_Forest_v3_PRM.xml

On-station Time: Daylight – No solar angle restrictions.

Additional Considerations: Snow on ground / trees okay.

Flyority 3

Collection Area: NIS Offset Flight

Flight Plan Name: D10_O10C_NIS_Offset_v2_PRM.xml

On-station Time: 1600 UTC / 1000 L

Crew: Nick, Cam, Elissa, Matt,