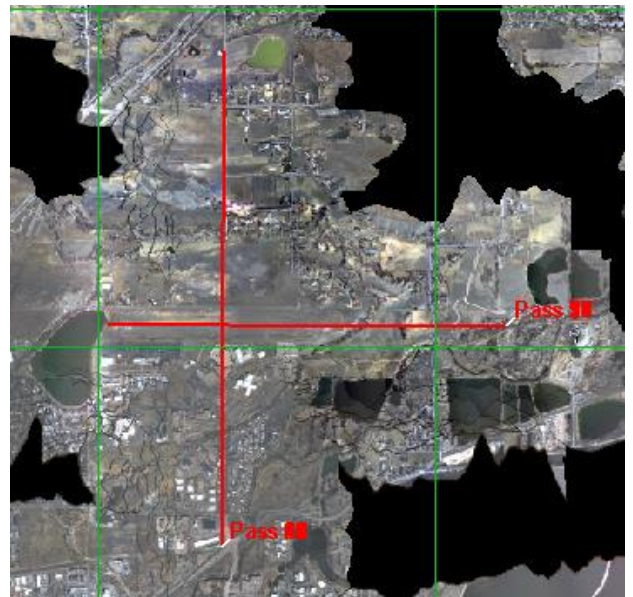
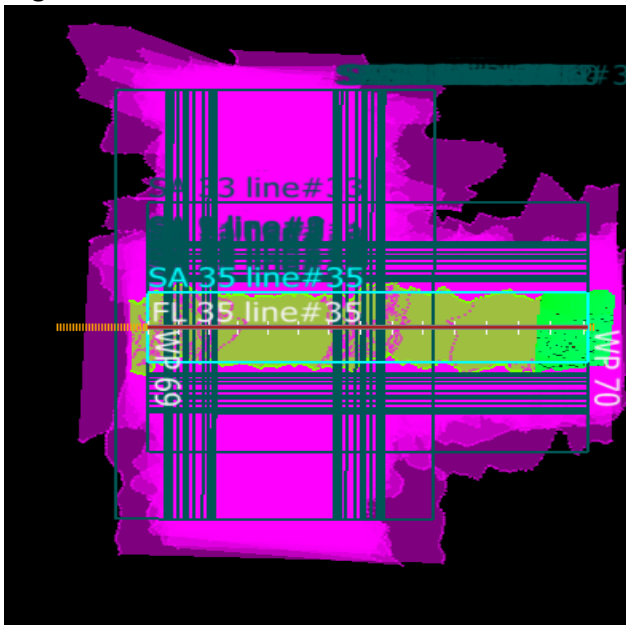


A circular logo for the 10th anniversary of Airborne Observation. The top arc reads "10 YEARS AIRBORNE OBSERVATION" and the bottom arc reads "2014 - 2023 AOP". The center features a stylized globe with a white aircraft flying over it. The globe is divided into red, green, and blue sections, with white stars. A black eagle is perched on top of the aircraft.

Total number of lines flown: 37

Flight Screenshots



Pictures



A view over Boulder during the Nominal Runway Flight.

Cumulative Domain Coverage

D00|B10F (Complete Greeley Boresight Geocalibration - 1500m, 1000m, 550m - Galaxy)

1	2	3	4	5	6	7	8	9	10	11	12	13	14	15	16	17	18	19	20
---	---	---	---	---	---	---	---	---	----	----	----	----	----	----	----	----	----	----	----

Flown: 90% (18/20)

Green: 0% (0/20)

Yellow: 75% (15/20)

Red: 15% (3/20)

D00|H10D (NEON Headquarters Lidar Validation - Galaxy)

1	2	3	4
---	---	---	---

Flown: 100% (4/4)

Green: 0% (0/4)

Yellow: 0% (0/4)

Red: 100% (4/4)

D00|N10F (Nominal Runway at KBDU - Galaxy)

1	2	3	4	5	6	7	8	9	10	11	12	13	14	15	16	17	18	19	20
21	22	23	24	25	26	27	28	29	30	31	32	33	34	35	36	37			

Flown: 100% (37/37)

Green: 14% (5/37)

Yellow: 86% (32/37)

Red: 0% (0/37)

D00|O10C (NIS Offset - Galaxy)

1	2
---	---

Flown: 0% (0/2)

Green: 0% (0/2)

Yellow: 0% (0/2)

Red: 0% (0/2)

D00|R10E (Table Mountain Radiometric Calibration - Galaxy)

1	2	3	4	5
---	---	---	---	---

Flown: 0% (0/5)

Green: 0% (0/5)

Yellow: 0% (0/5)

Red: 0% (0/5)

D00|W10D (Wiggle Timing Test - Galaxy)

1	2
---	---

Flown: 100% (2/2)

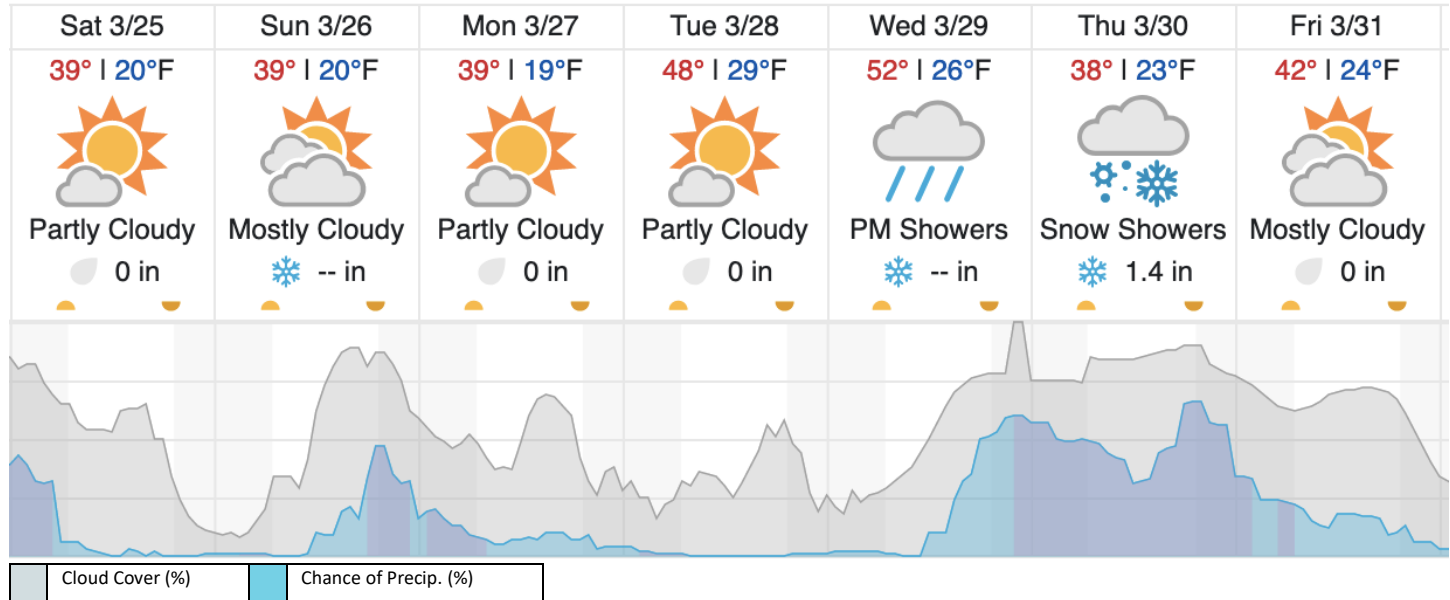
Green: 0% (0/2)

Yellow: 0% (0/2)

Red: 100% (2/2)

Weather Forecast

Boulder, CO



source: wunderground.com

Flight Collection Plan for 25 March 2023

Flyority 1

Collection Area: Table Mountain Radiometric Calibration

Flight Plan Name: D10_R10E_Radiometric_Cal_Table_Mtn_v1_PRM.xml

45° On-station Time: 1740 UTC / 1140 L

Additional Considerations: Ground should be dry.

Flyority 2

Collection Area: NIS Offset Flight

Flight Plan Name: D10_O10C_NIS_Offset_v2_PRM.xml

35° On-station Time: 1620 UTC / 1030 L

Flight Crew

Elissa (Lidar), Mitch (NIS), Cam (Ground)