

[illegible]

Line #	38	39	40	41	42
Lidar	✓	✓	✓	✓	✓
Spectrometer	✓	✓	✓	✓	✓
Camera	✓	✓	✓	✓	✓
Cloud Cover					

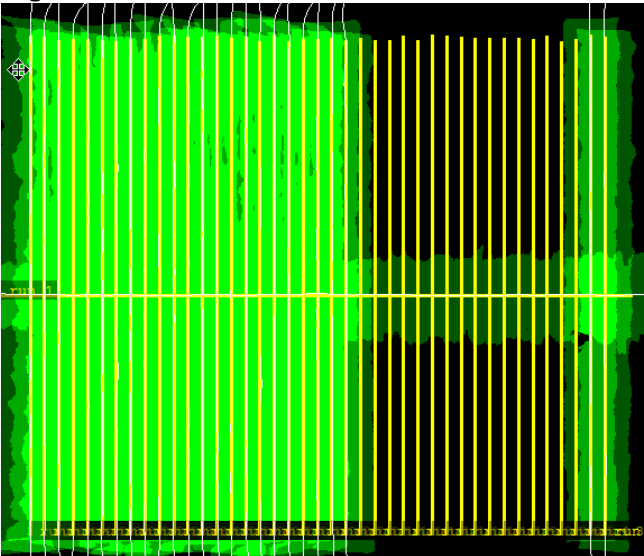
Total number of lines flown: 25

D15|REDB

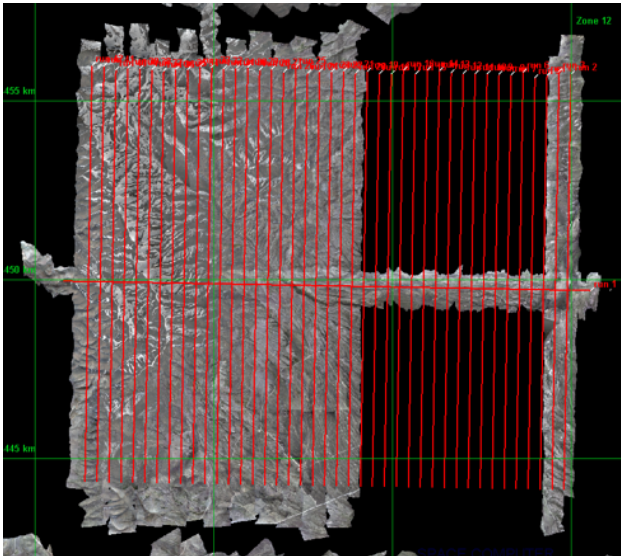
Line #	2	3	4	5	6	7	8	9	10	11	12	13	14	15	16	17	18	19
Lidar	✓	✓	✓	✓	✓	✓	✓	✓	✓	✓	✓	✓	✓	✓	✓	✓	✓	✓
Spectrometer	✓	✓	✓	✓	✓	✓	✓	✓	✓	✓	✓	✓	✓	✓	✓	✓	✓	✓
Camera	✓	✓	✓	✓	✓	✓	✓	✓	✓	✓	✓	✓	✓	✓	✓	✓	✓	✓
Cloud Cover																		

Total number of lines flown: 18

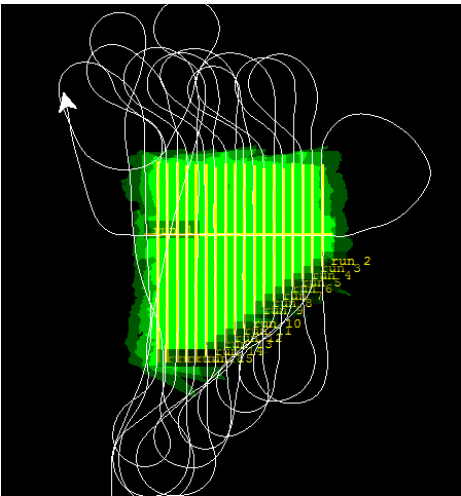
Flight Screenshots



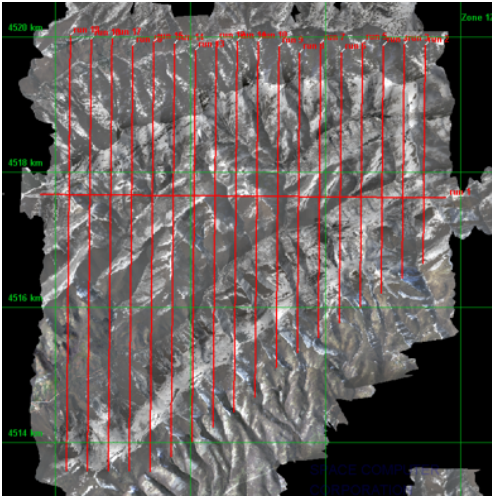
ONAQ Lidar



ONAQ NIS



REDB Lidar



REDB NIS – snow cover can be seen in screenshot

Pictures



Left: ONAQ – Looking south from the site at the green developing.

Right: REDB – Looking west at the valley from the northern end of the site. The high elevation was still very snow covered due to a record snow year in the Wasatch.

Cumulative Domain Coverage

D15 | MOAB (Moab)

1	2	3	4	5	6	7	8	9	10	11	12	13	14	15	16	17	18	19	20
21	22	23	24	25	26	27	28	29											

Flown: 100% (29/29)
Green: 69% (20/29)
Yellow: 28% (8/29)
Red: 3% (1/29)

D15 | ONAQ (Onaqui)

1	2	3	4	5	6	7	8	9	10	11	12	13	14	15	16	17	18	19	20
21	22	23	24	25	26	27	28	29	30	31	32	33	34	35	36	37	38	39	40
41	42																		

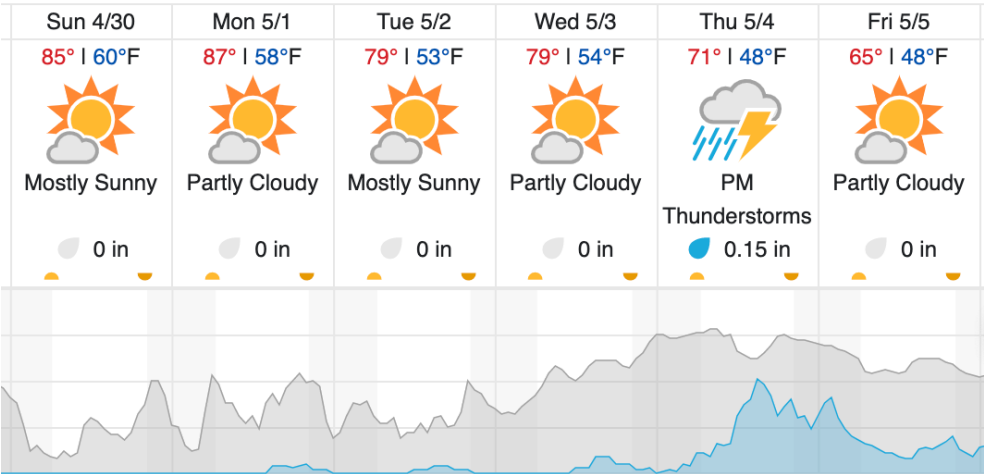
Flown: 100% (42/42)
Green: 100% (42/42)
Yellow: 0% (0/42)
Red: 0% (0/42)

D15 | REDB (Red Butte)

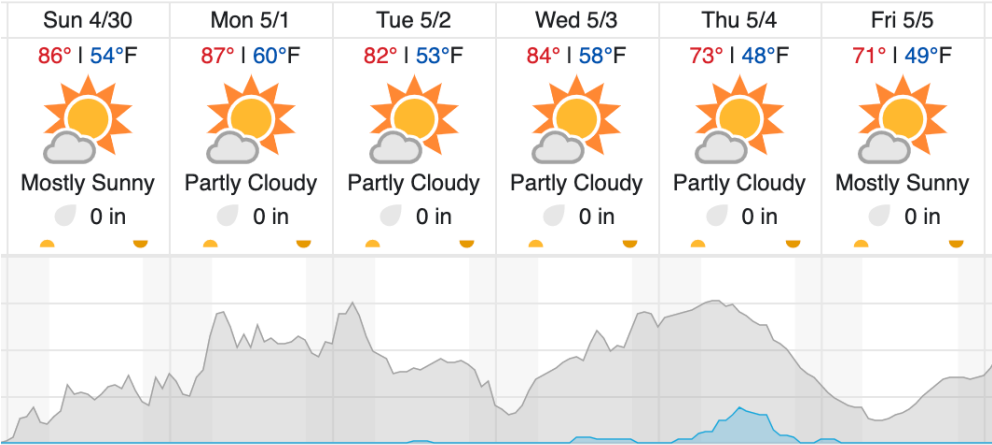
1	2	3	4	5	6	7	8	9	10	11	12	13	14	15	16	17	18	19
---	---	---	---	---	---	---	---	---	----	----	----	----	----	----	----	----	----	----

Flown: 100% (19/19)
Green: 100% (19/19)
Yellow: 0% (0/19)
Red: 0% (0/19)

Weather Forecast
Salt Lake City, UT



Moab, UT



Cloud Cover (%)	Chance of Precip. (%)
-----------------	-----------------------

source: wunderground.com

Flight Collection Plan for April 30, 2023

Collection Area: Moab (MOAB) **Lines 2-9 if “green” conditions**
Flight Plan Name: 13_MOAB_R1_P1_v3_Q780
On-Station Time: 1600 UTC/ 1000 L

Crew: Abe (lidar), Mike (NIS)