



Payload 1 Daily Flight Report



Date: 2023-06-28

Flight Campaign ID: P1C1

Airport, FBO ID, City: Portland-Hillsboro Airport (KHIO) - Hillsboro, OR

Aircraft: N331AR

Domain: 16 (Pacific Northwest)

Sites Flown: ABBY (Abby Road), WREF_P1 (Wind River Experimental Forest Priority 1)

Days left in Domain: 10

Report Author: Elissa

Lidar Operators: Elissa

Spectrometer Operators: Mike

Pilots: Will, Jeff

Flight Hours: 03:40

Hours until maintenance: 108.62

GPS Instruments: 07 - FBO_KHIO, AOP_ABBY, AOP_WREF

Summary

Moderately hazy yet green conditions this morning allowed us to complete the Priority 1 flight box at Wind River and get a good start on ABBY.

Concerns

None.

Comments

None.

Daily Coverage

Estimated Cloud Cover Key

Green:	Yellow:	Red:
0-10%	11-50%	>50%

D16|WREF_P1

Line #	54	55	56	57
Lidar	✓	✓	✓	✓
Spectrometer	✓	✓	✓	✓
Camera	✓	✓	✓	✓
Cloud Cover				

Total number of lines flown: 4

D16|ABBY

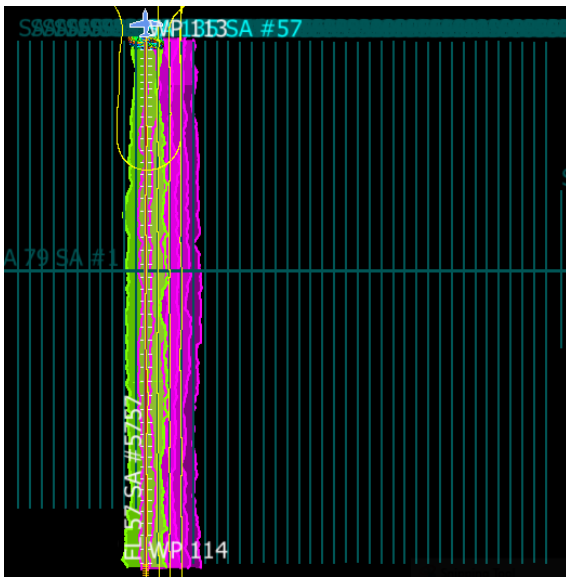
Line #	24	25	26	27	28	29	30	31	32	33	34	35	36	37	38	39	40	41	42	43	
Lidar	✓	✓	✓	✓	✓	✓	✓	✓	✓	✓	✓	✓	✓	✓	✓	✓	✓	✓	✓	✓	✓
Spectrometer	✓	✓	✓	✓	✓	✓	✓	✓	✓	✓	✓	✓	✓	✓	✓	✓	✓	✓	✓	✓	✓
Camera	✓	✓	✓	✓	✓	✓	✓	✓	✓	✓	✓	✓	✓	✓	✓	✓	✓	✓	✓	✓	✓
Cloud Cover																					

Line #	44
Lidar	✓
Spectrometer	✓
Camera	✓
Cloud Cover	

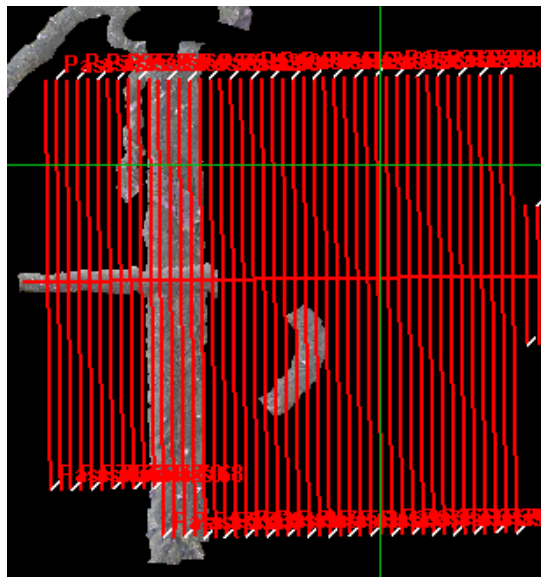
Total number of lines flown: 21

Flight Screenshots

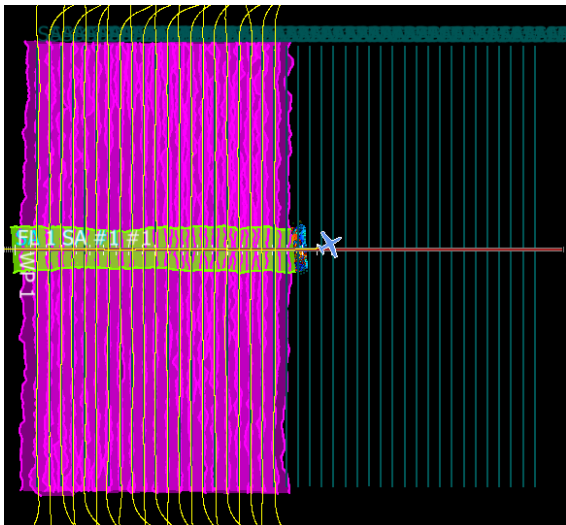
WREF Lidar



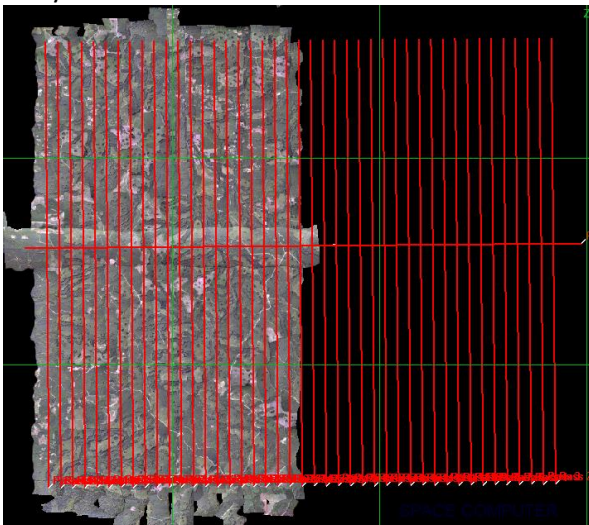
WREF NIS



ABBY Lidar



Abby NIS



Cumulative Domain Coverage

D16 | ABBY (Abby Road)

1	2	3	4	5	6	7	8	9	10	11	12	13	14	15	16	17	18	19	20
21	22	23	24	25	26	27	28	29	30	31	32	33	34	35	36	37	38	39	40
41	42	43	44																

Flown: 50% (22/44)

Green: 50% (22/44)

Yellow: 0% (0/44)

Red: 0% (0/44)

D16 | MCRA (McRae Creek)

1	2	3	4	5	6	7	8	9
---	---	---	---	---	---	---	---	---

Flown: 0% (0/9)

Green: 0% (0/9)

Yellow: 0% (0/9)

Red: 0% (0/9)

D16 | N16A (D16 Nominal Runway)

1

Flown: 0% (0/1)

Green: 0% (0/1)

Yellow: 0% (0/1)

Red: 0% (0/1)

D16 | WREF_P1 (Wind River Experimental Forest Priority 1)

1	2	3	4	5	6	7	8	9	10	11	12	13	14	15	16	17	18	19	20
21	22	23	24	25	26	27	28	29	30	31	32	33	34	35	36	37	38	39	40
41	42	43	44	45	46	47	48	49	50	51	52	53	54	55	56	57			

Flown: 100% (57/57)

Green: 100% (57/57)

Yellow: 0% (0/57)

Red: 0% (0/57)

D16 | WREF_P2 (Wind River Experimental Forest Priority 2)

58	59	60	61	62	63	64	65	66	67	68	69	70	71	72	73	74	75	76	77
78																			

Flown: 10% (2/21)

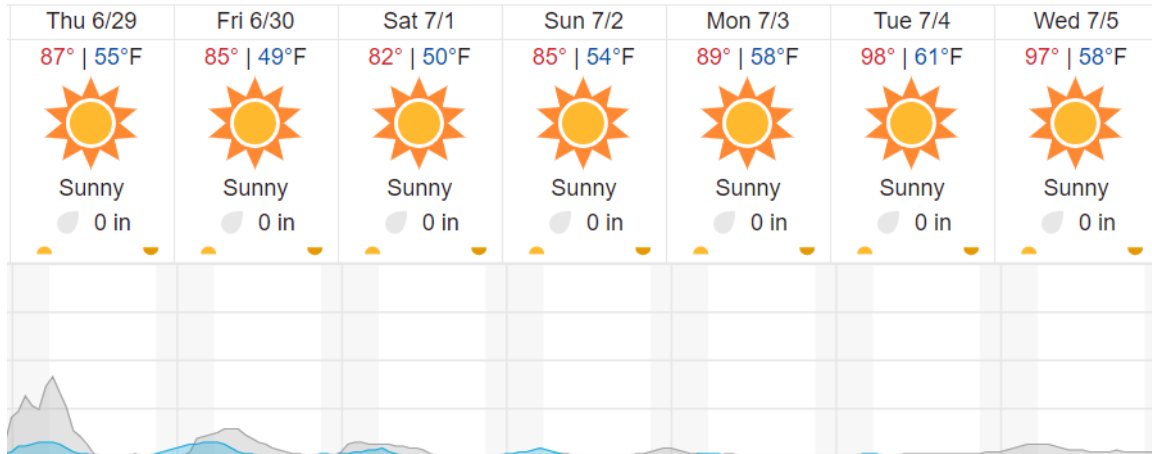
Green: 10% (2/21)

Yellow: 0% (0/21)

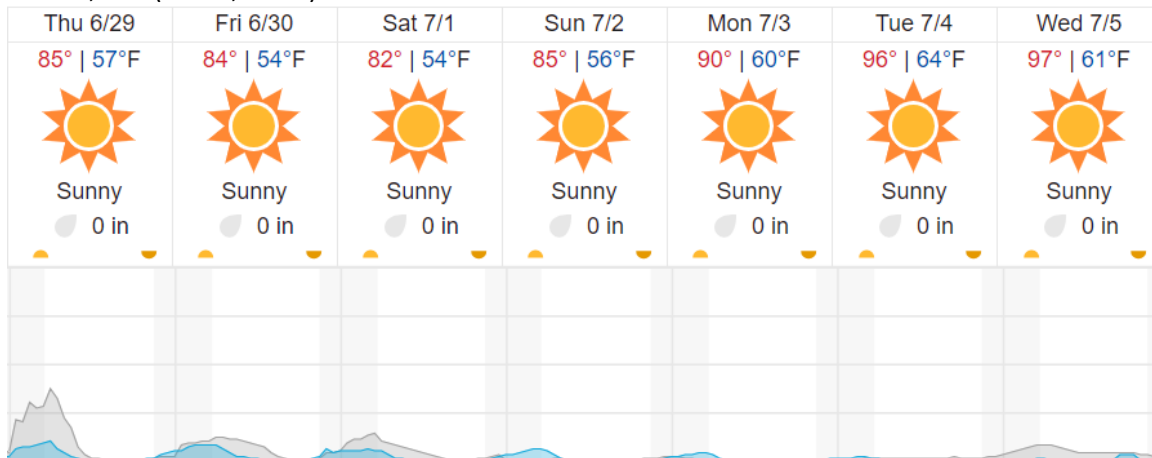
Red: 0% (0/21)

Weather Forecast

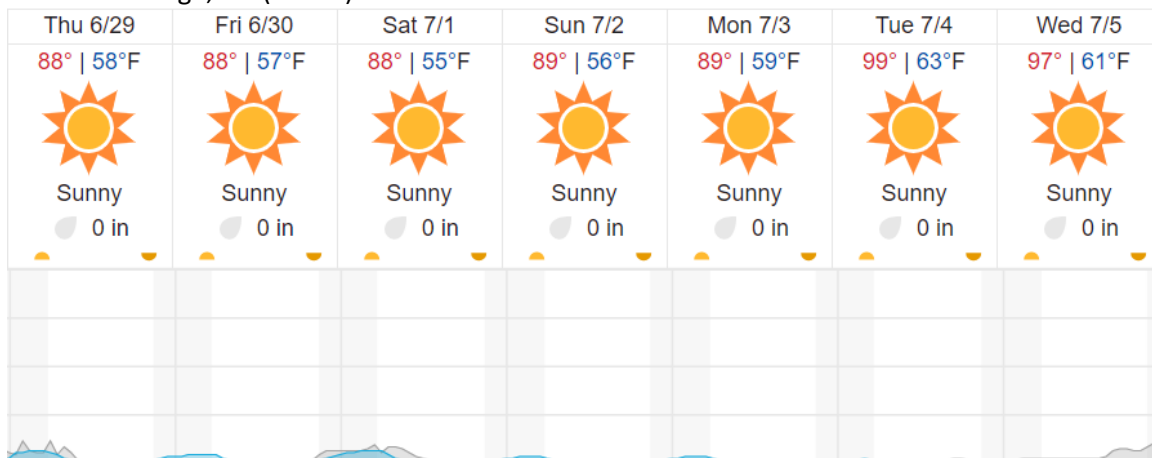
Hillsboro, OR (KHIO)



Carson, WA (WREF, ABBY)



McKenzie Bridge, OR (MCRA)



Cloud Cover (%) Chance of Precip. (%)

source: wunderground.com

Flight Collection Plan for 29 June 2023

Flyority 1

Collection Area: Abby Road (ABBY), *lines 2 – 23*

Flight Plan Name: D16_ABBY_R2_P1_v2_PRM.xml

On-Station Time: 1630 UTC / 0930 L

Flyority 2

Collection Area: Wind River Experimental Forest (WREF) P2, *lines 58 – 76*

Flight Plan Name: D16_WREF_C1_P1_P2_v3_PRM.xml

On-Station Time: 1630 UTC / 0930 L

Flyority 3

Collection Area: McRae Creek (MCRA)

Flight Plan Name: D16_MCRA_A2_P1_v2_PRM.xml

On-Station Time: 1630 UTC / 0930 L

Crew: Mike (Lidar), Elissa (NIS)