



## Payload 3 Daily Flight Report



**Date:** 2023-08-30

**Flight Campaign ID:** P3C1

**Airport, FBO ID, City:** Boulder Municipal Airport (KBDU) - Boulder, CO

**Aircraft:** N934MU

**Domain:** 00 (Calibration), 10 (Central Plains)

**Sites Flown:** N10D (Nominal Runway at KBDU - Riegl), RMNP (Rocky Mountain National Park)

**Days left in Domain:** 1

**Report Author:** Mike

**Lidar Operators:** Mike

**Flight Hours:** 02:41

**Spectrometer Operators:** Mitch

**Hours until maintenance:** 67.22

**Pilots:** Justin, Will

**GPS Instruments:** AOP\_KBDU, AOP\_NIWO

**Ground Crew:** Cameron

### Summary

A combination science/calibration flight was performed today. A few straggler lines were collected at RMNP in green and yellow conditions and the nominal runway calibration flight was completed.

### Concerns

None

### Comments

-All post-season calibration flights have now been completed for P3.

-Crew will monitor tomorrow's weather for one last chance at greening up RMNP.

-De-install of payloads has been moved to Friday (9/1) due to successful calibration flights.

### Daily Coverage

Estimated Cloud Cover Key

Green:	Yellow:	Red:
0-10%	11-50%	>50%

D10|RMNP

Line #	1	27	28	29	30
Lidar	✓	✓	✓	✓	✓
Spectrometer		✓	✓	✓	✓
Camera	✓	✓	✓	✓	✓
Cloud Cover					

Total number of lines flown: 5

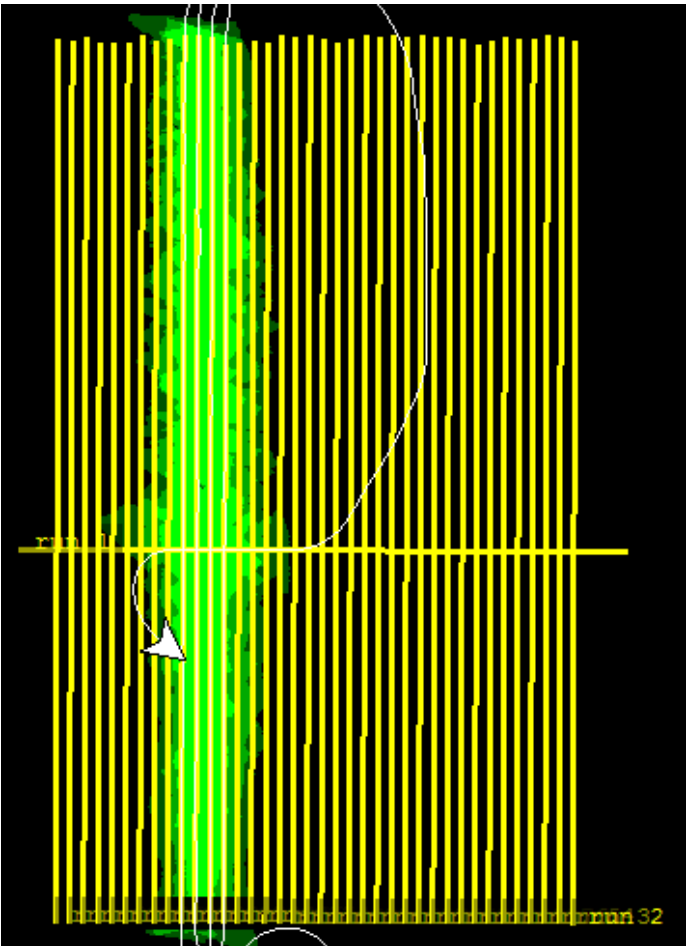
D00|N10D

Line #	1	2	3	4	5	6	7	8	9	10	11	12	13	14	15	16	17	18	19	20
Lidar	✓	✓	✓	✓	✓	✓	✓	✓	✓	✓	✓	✓	✓	✓	✓	✓	✓	✓	✓	✓
Spectrometer	✓	✓	✓	✓	✓	✓	✓	✓	✓	✓	✓	✓	✓	✓	✓	✓	✓	✓	✓	✓
Camera	✓	✓	✓	✓	✓	✓	✓	✓	✓	✓	✓	✓	✓	✓	✓	✓	✓	✓	✓	✓
Cloud Cover																				

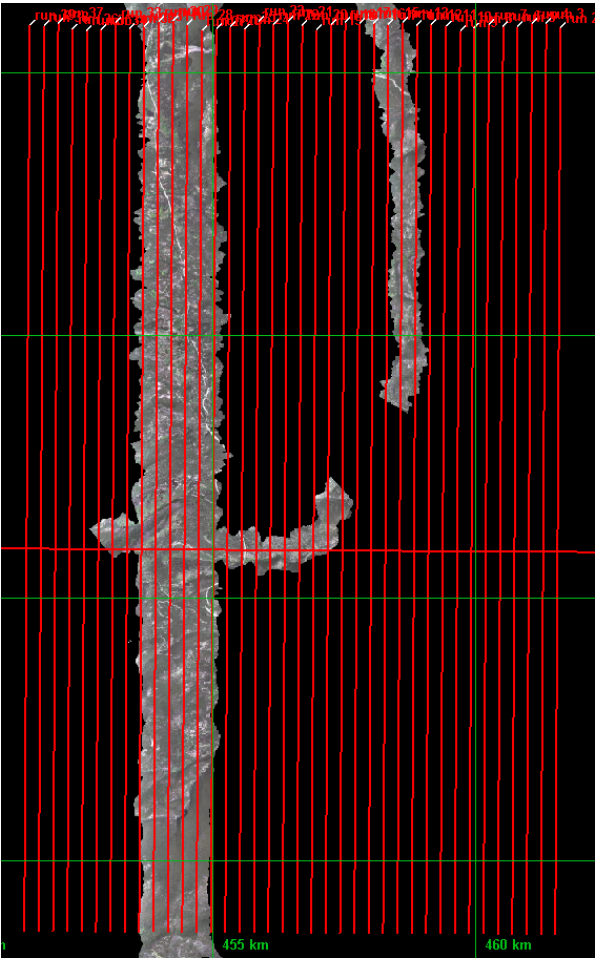
Line #	21	22	23	24
Lidar	✓	✓	✓	✓
Spectrometer	✓	✓	✓	✓
Camera	✓	✓	✓	✓
Cloud Cover				

Total number of lines flown: 24

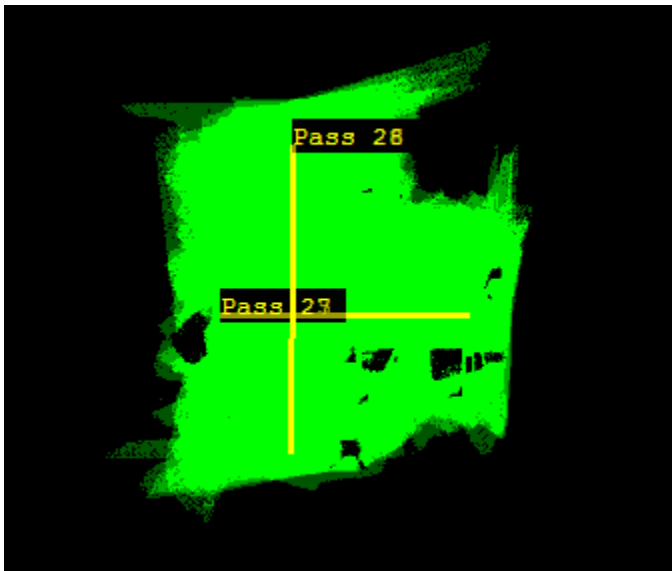
Flight Screenshots



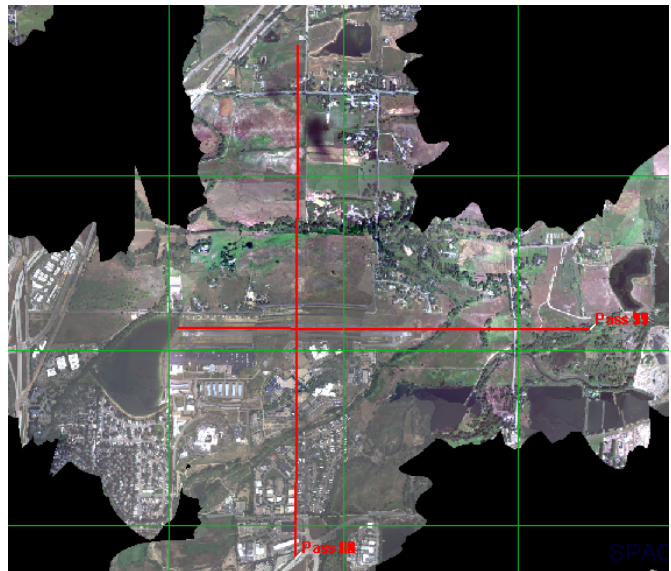
RMNP lidar



RMNP NIS



N10D lidar



N10D NIS

### Pictures



Looking southwest at the Indian Peaks.



A quick view of P1 N331AR is it heads in after completing its final mission of the season.

## Cumulative Domain Coverage

### D00|B10E (Riegl Boresight Calibration - 1600m, 1000m, 500m)

1	2	3	4	5	6	7	8	9	10	11	12	13	14	15	16	17	18	19	20
---	---	---	---	---	---	---	---	---	----	----	----	----	----	----	----	----	----	----	----

Flown: 100% (20/20)

Green: 100% (20/20)

Yellow: 0% (0/20)

Red: 0% (0/20)

### D00|H10C (NEON Headquarters Lidar Test - Riegl)

1	2	3	4
---	---	---	---

Flown: 100% (4/4)

Green: 0% (0/4)

Yellow: 0% (0/4)

Red: 100% (4/4)

### D00|N10D (Nominal Runway at KBDU - Riegl)

1	2	3	4	5	6	7	8	9	10	11	12	13	14	15	16	17	18	19	20
21	22	23	24	25	26	27	28												

Flown: 86% (24/28)

Green: 50% (14/28)

Yellow: 36% (10/28)

Red: 0% (0/28)

### D00|O10B (NIS Offset - Riegl)

1	2
---	---

Flown: 0% (0/2)

Green: 0% (0/2)

Yellow: 0% (0/2)

Red: 0% (0/2)

### D00|R10C (Table Mountain Radiometric Calibration - Riegl)

1	2	3	4	5
---	---	---	---	---

Flown: 0% (0/5)

Green: 0% (0/5)

Yellow: 0% (0/5)

Red: 0% (0/5)

### D00|R10D (Boulder Airport Radiometric Calibration)

1	2	3	4	5
---	---	---	---	---

Flown: 100% (5/5)

Green: 100% (5/5)

Yellow: 0% (0/5)

Red: 0% (0/5)

### D00|V10C (Boulder City South)

1	2	3	4	5	6	7	8	9	10	11	12	13	14	15	16	17	18	19	20
21	22	23	24	25	26	27	28	29											

Flown: 0% (0/29)

Green: 0% (0/29)

Yellow: 0% (0/29)

Red: 0% (0/29)

## D00|W10C (Wiggle Timing Test - Riegl)

1	2
---	---

Flown: 100% (2/2)

Green: 0% (0/2)

Yellow: 0% (0/2)

Red: 100% (2/2)

## D10|ARIK (Arikaree River)

3	4	5	6	7	8	9	10	11	12	13	14	15	16	17	18	19	20	21	22
23	24	25	26	27	28	29	30	31	32	33	34	35							

Flown: 100% (33/33)

Green: 100% (33/33)

Yellow: 0% (0/33)

Red: 0% (0/33)

## D10|RMNP (Rocky Mountain National Park)

2	3	4	5	6	7	8	9	10	11	12	13	14	15	16	17	18	19	20	21
22	23	24	25	26	27	28	29	30	31	32	33	34	35	36	37	38	39		

Flown: 100% (38/38)

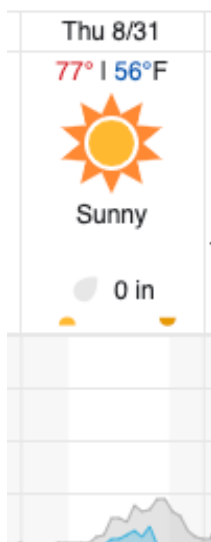
Green: 74% (28/38)

Yellow: 24% (9/38)

Red: 3% (1/38)

## Weather Forecast

Allenspark, CO



Cloud Cover (%)	Chance of Precip. (%)
-----------------	-----------------------

source: wunderground.com

## Flight Collection Plan for 31 August 2023

### Flyority 1

Collection Area: Rocky Mountain National Park (RMNP)

Flight Plan Name: D10\_RMNP\_R2\_P1\_v2\_Q780

On-Station Time: 16:00 UTC / 10:00 L

Crew: Mitch (Lidar), Ham (NIS), Mike (Ground)