



Payload 3 Daily Flight Report



Date: 2024-07-23

Flight Campaign ID: P3C1

Airport, FBO ID, City: Boulder Municipal Airport (KBDU) - Boulder, CO

Aircraft: N821AR

Domain: 13 (Southern Rockies & Colorado Plateau), 10 (Central Plains), 15 (Great Basin)

Sites Flown: NIWO (Niwot Ridge Mountain Research Station)

Days left in Domain: 0

Report Author: Nick

Lidar Operators: Nick

Spectrometer Operators: Cameron

Pilots: Manning, Justin

Ground Crew: Matt

Flight Hours: 00:39

Hours until maintenance: 120.68

GPS Instruments: AOP_KBDU, AOP_NIWO

Summary

The crew took to the air in cloudless but very smoke heavy skies today. The smoke was too severe for collections, but 2 lines and a cross strip were collected over the tarps at NIWO.

Concerns

The MIDAS SSD was not available to copy GPS data files during shut down. Files were transferred using a USB drive.

Comments

A GPS will be deployed tomorrow for potential ARIK collections Thursday.

Daily Coverage

Estimated Cloud Cover Key

Green:	Yellow:	Red:
0-10%	11-50%	>50%

Solar Angle Less Than 40 degrees

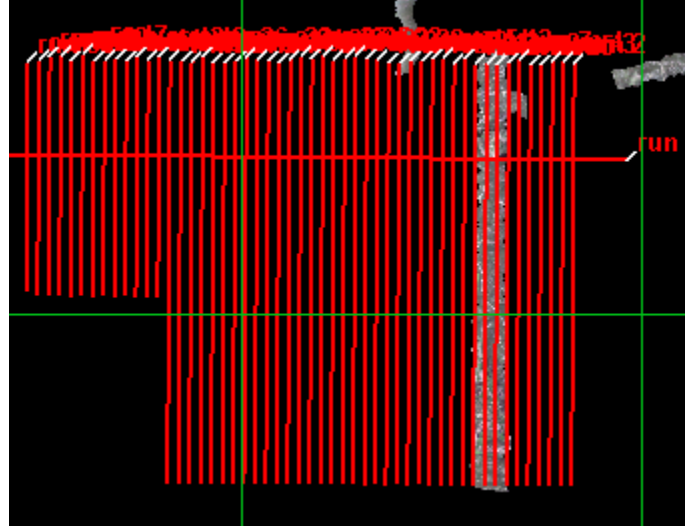
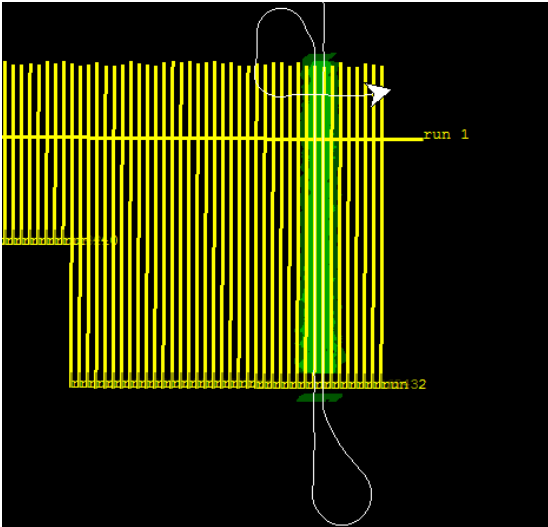
Line #

D13|NIWO

Line #	1	9	10
Lidar		✓	✓
Spectrometer	✓	✓	✓
Camera		✓	✓
Cloud Cover			

Total number of lines flown: 3

Flight Screenshots



Pictures



Haze above Niwot Ridge.

Cumulative Domain Coverage

D10|ARIK (Arikaree River)

3	4	5	6	7	8	9	10	11	12	13	14	15	16	17	18	19	20	21	22
23	24	25	26	27	28	29	30	31	32	33	34	35							

Flown: 0% (0/33)
 Green: 0% (0/33)
 Yellow: 0% (0/33)
 Red: 0% (0/33)

D10|RMNP (Rocky Mountain National Park)

2	3	4	5	6	7	8	9	10	11	12	13	14	15	16	17	18	19	20	21
22	23	24	25	26	27	28	29	30	31	32	33	34	35	36	37	38	39	40	

Flown: 0% (0/39)
 Green: 0% (0/39)
 Yellow: 0% (0/39)
 Red: 0% (0/39)

D10 | STER (Sterling Agricultural Site)

1	2	3	4	5	6	7	8	9	10	11	12	13	14	15	16	17	18	19	20
21	22	23	24	25															

Flown: 100% (25/25)
 Green: 100% (25/25)
 Yellow: 0% (0/25)
 Red: 0% (0/25)

D13 | NIWO (Niwot Ridge Mountain Research Station)

2	3	4	5	6	7	8	9	10	11	12	13	14	15	16	17	18	19	20	21
22	23	24	25	26	27	28	29	30	31	32	33	34	35	36	37	38	39	40	41
42	43	44	45	46	47	48	49	50	51	52									

Flown: 4% (2/51)
 Green: 0% (0/51)
 Yellow: 0% (0/51)
 Red: 4% (2/51)

D13 | WLOU (West St. Louis Creek)

2	3	4	5	6	7	8	9	10	11	12	13	14
---	---	---	---	---	---	---	---	----	----	----	----	----

Flown: 0% (0/13)
 Green: 0% (0/13)
 Yellow: 0% (0/13)
 Red: 0% (0/13)

D15 | CTWD_P1

1	2	3	4	5	6	7	8	9	10	11	12	13	14	15	16	17	18	19	20	
21	22																			

Flown: 0% (0/22)
 Green: 0% (0/22)
 Yellow: 0% (0/22)
 Red: 0% (0/22)

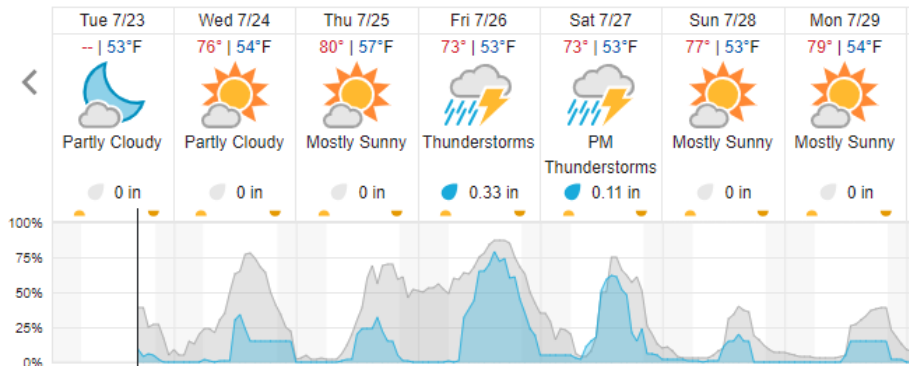
D15 | CTWD_P2

23	24	25	26	27	28	29
----	----	----	----	----	----	----

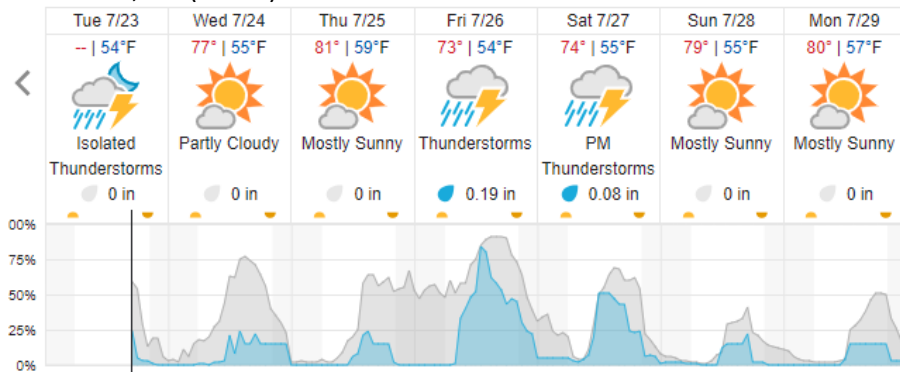
Flown: 0% (0/7)
 Green: 0% (0/7)
 Yellow: 0% (0/7)
 Red: 0% (0/7)

Weather Forecast

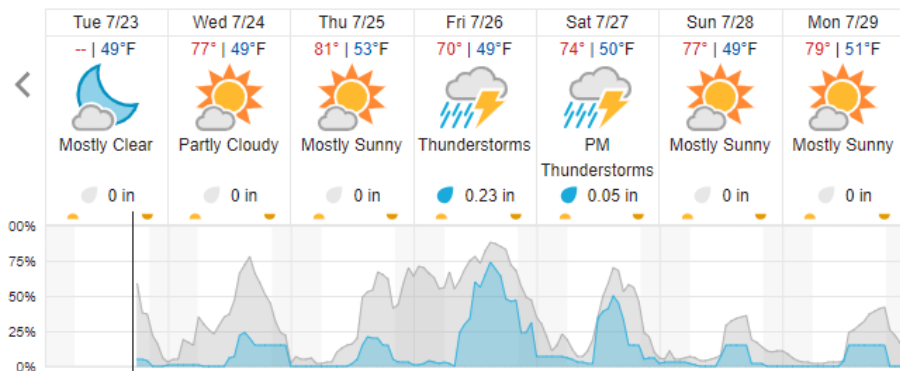
Allenspark, CO (RMNP)



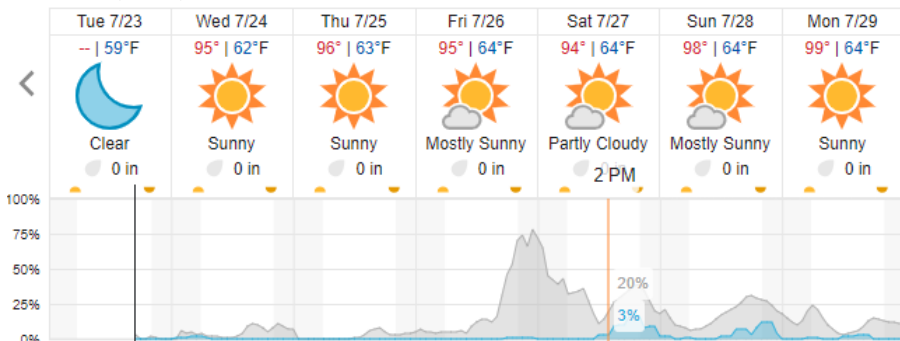
Nederland, CO (NIWO)



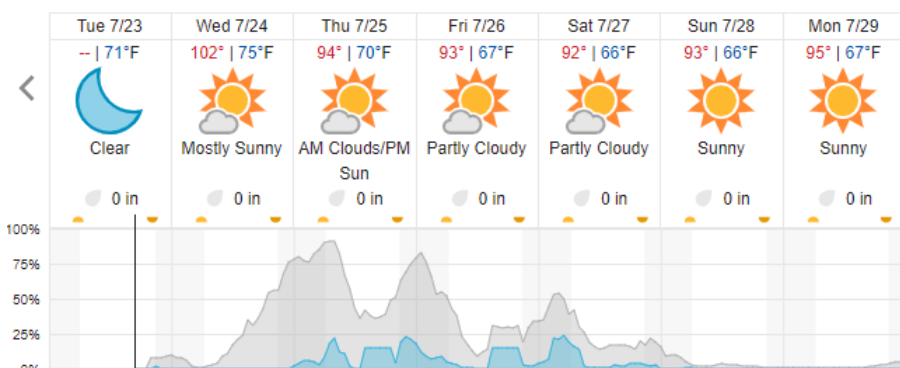
Fraser, CO (WLOU)



Joes, CO (ARIK)



Ogden, UT (CTWD)



Cloud Cover (%) Chance of Precip. (%)

Flight Collection Plan for July 24, 2024

Flyority 1

Collection Area: Niwot Ridge Mountain Research Station

Flight Plan Name: D13_NIWO_C1_P1_v5_Q780

On-station Time: 1540 UTC / 0940 L

Flyority 2

Collection Area: Rocky Mountain National Park (RMNP)

Flight Plan Name: D10_RMNP_R2_P1_v4_Q780

On-station Time: 1540 UTC / 0940 L

Flyority 3

Collection Area: West St. Louis Creek (WLOU)

Flight Plan Name: D13_WLOU_A1_P1_v2_Q780

On-station Time: 1540 UTC / 0940 L

Flyority 4

Collection Area: Arikaree River (ARIK) – Priority 1 & 2 Flight Box

Flight Plan Name: D10_ARIK_A1_P2_v3_Q780

On-station Time: 1530 UTC / 0930 L

Flyority 5

Collection Area: Northern Utah Priority 1 Flight Plan

Flight Plan Name: D15_CTWD_S1_P1_v1

On-station Time: 1520 UTC / 0920 L

Flyority 6

Collection Area: Northern Utah Priority 2 Flight Plan

Flight Plan Name: D15_CTWD_S1_P2_v1

On-station Time: 1520 UTC / 0920 L

Crew: Cam (Lidar), Nick (NIS), Matt (Ground)