



## Payload 3 Daily Flight Report



**Date:** 2024-08-27

**Flight Campaign ID:** P3C1

**Airport, FBO ID, City:** Boulder Municipal Airport (KBDU) - Boulder, CO

**Aircraft:** N821AR

**Domain:** 10 (Central Plans), 13 (Southern Rockies & Colorado Plateau)

**Sites Flown:** ARIK (Arikaree River)

**Days left in Domain:** 0

**Report Author:** Mitch

**Lidar Operators:** Mitch

**Spectrometer Operators:** Matt

**Pilots:** Vince, Manning

**Ground Crew:** Nick

**Flight Hours:** 03:32

**Hours until maintenance:** 78.50

**GPS Instruments:** 06 - ARIK, AOP\_KBDU

### Summary

Last day of D10/13 collects out of the Boulder, and the crew mobilized towards ARIK for one last collect. They were greeted with heavy haze and a high strato-cirrus layer to the south of the site. Per directive, only 13 lines were collected to finish up initial coverage over the ARIK Priority 1 box. This concludes D10/13 collects. The Otter will transit tomorrow to Tucson, AZ tomorrow in preparations for D14 collects over SRER.

### Concerns

None

### Comments

- No fuel leaks have been observed since the extensive Twin Otter repair.
- Cam arrives in Tucson tonight ahead of the planes arrival.

### Daily Coverage

Estimated Cloud Cover Key

Green:	Yellow:	Red:
0-10%	11-50%	>50%

Solar Angle Less Than 40 degrees

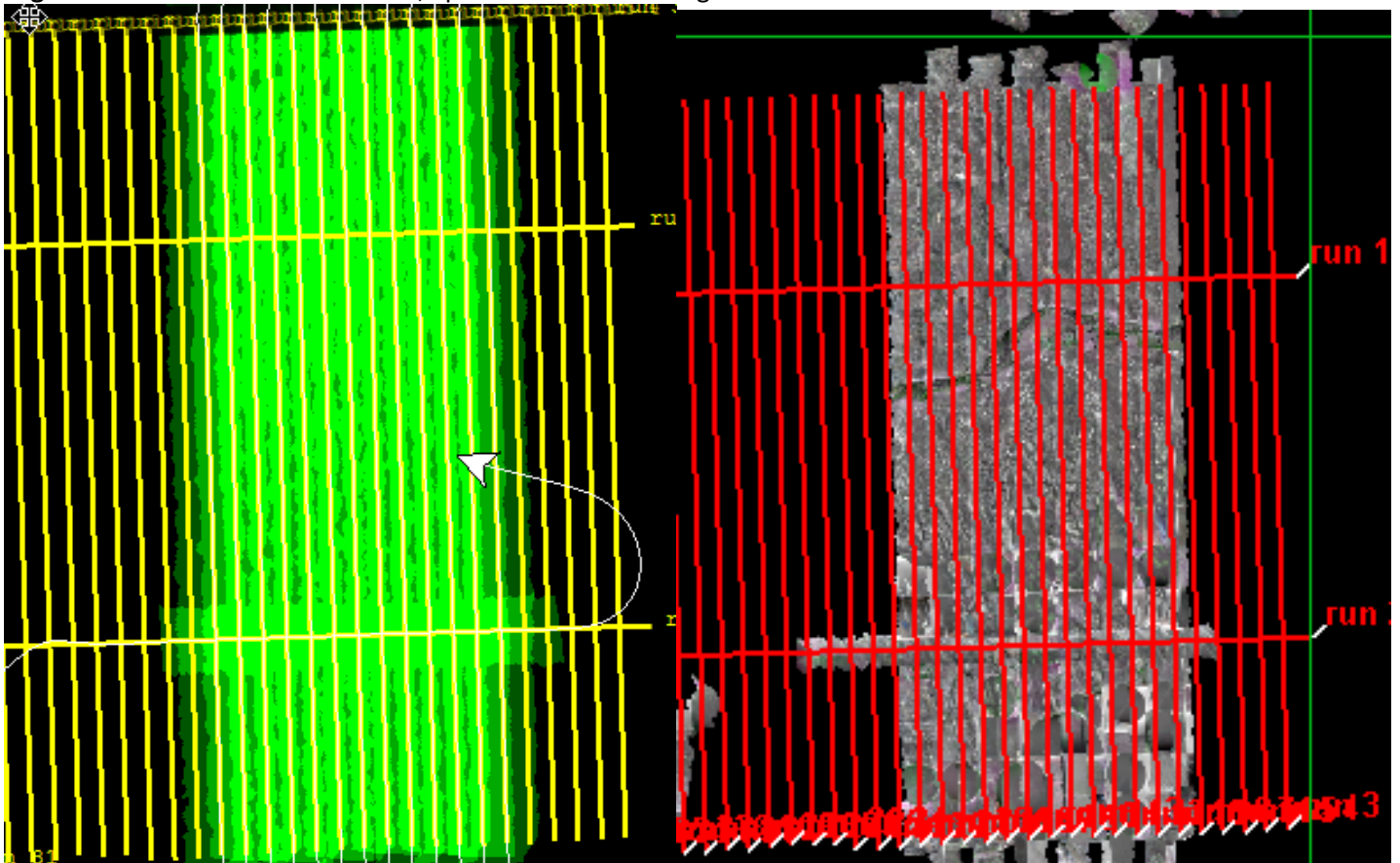
Line #
--------

D10|ARIK

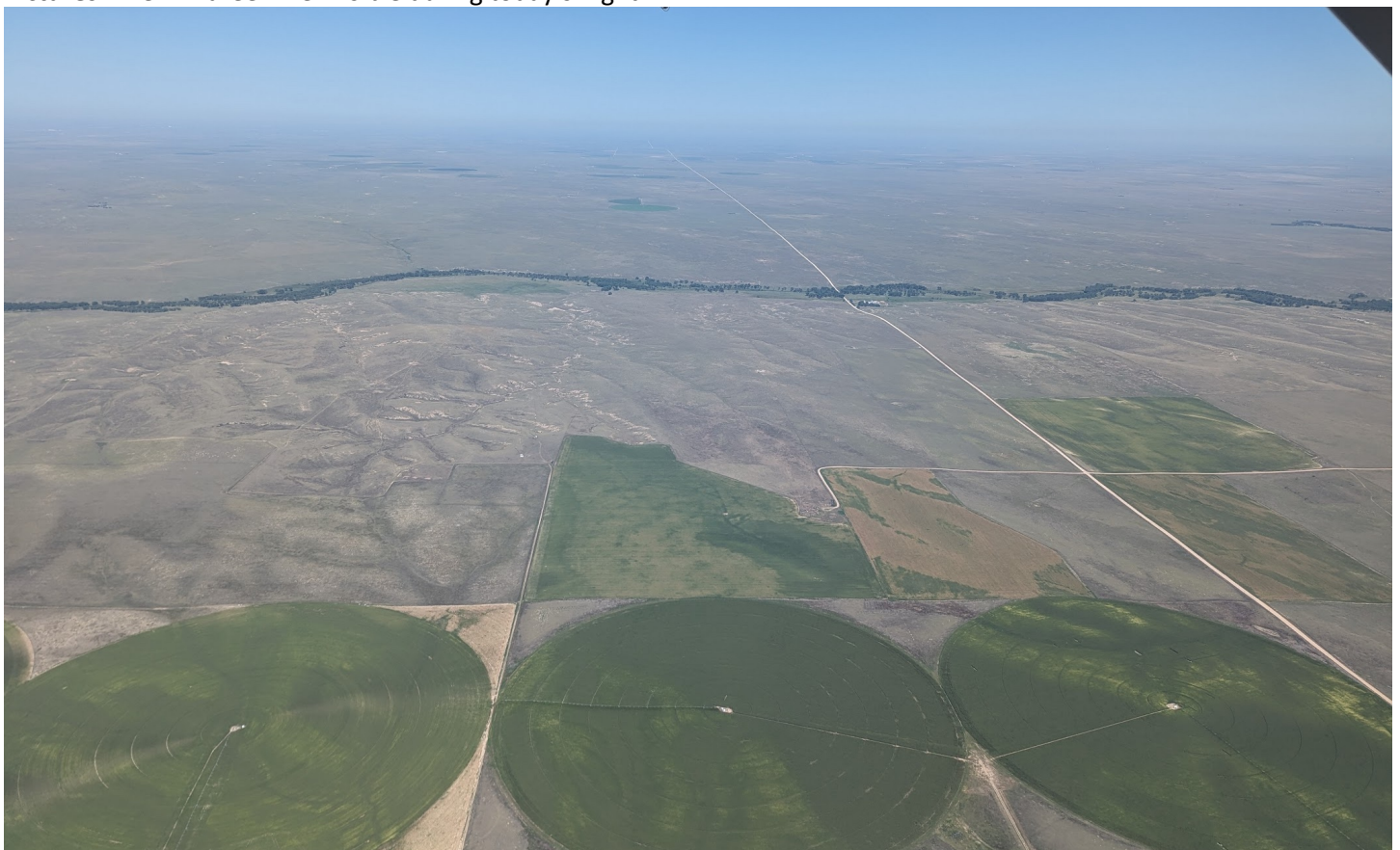
Line #	8	9	10	11	12	13	14	15	16	17	18	19	20
Lidar	✓	✓	✓	✓	✓	✓	✓	✓	✓	✓	✓	✓	✓
Spectrometer	✓	✓	✓	✓	✓	✓	✓	✓	✓	✓	✓	✓	✓
Camera	✓	✓	✓	✓	✓	✓	✓	✓	✓	✓	✓	✓	✓
Cloud Cover													

Total number of lines flown: 13

Flight Screenshots: Lidar on the left, Spectrometer on the right.



Pictures: The Arikaree River visible during today's flight.



## Cumulative Domain Coverage

### D10|ARIK (Arikaree River)

3	4	5	6	7	8	9	10	11	12	13	14	15	16	17	18	19	20	21	22
23	24	25	26	27	28	29	30	31	32	33	34	35							

Flown: 55% (18/33)

Green: 0% (0/33)

Yellow: 0% (0/33)

Red: 55% (18/33)

### D10|RMNP (Rocky Mountain National Park)

2	3	4	5	6	7	8	9	10	11	12	13	14	15	16	17	18	19	20	21
22	23	24	25	26	27	28	29	30	31	32	33	34	35	36	37	38	39	40	

Flown: 97% (38/39)

Green: 97% (38/39)

Yellow: 0% (0/39)

Red: 0% (0/39)

### D10|STER (Sterling Agricultural Site)

1	2	3	4	5	6	7	8	9	10	11	12	13	14	15	16	17	18	19	20
21	22	23	24	25															

Flown: 100% (25/25)

Green: 100% (25/25)

Yellow: 0% (0/25)

Red: 0% (0/25)

### D13|NIWO (Niwot Ridge Mountain Research Station)

2	3	4	5	6	7	8	9	10	11	12	13	14	15	16	17	18	19	20	21
22	23	24	25	26	27	28	29	30	31	32	33	34	35	36	37	38	39	40	41
42	43	44	45	46	47	48	49	50	51	52									

Flown: 100% (51/51)

Green: 100% (51/51)

Yellow: 0% (0/51)

Red: 0% (0/51)

### D13|WLOU (West St. Louis Creek)

2	3	4	5	6	7	8	9	10	11	12	13	14
---	---	---	---	---	---	---	---	----	----	----	----	----

Flown: 92% (12/13)

Green: 92% (12/13)

Yellow: 0% (0/13)

Red: 0% (0/13)

### D15|CTWD\_P1 (NEON Research Support Services - Northern Utah Cottonwood Priority 1)

1	2	3	4	5	6	7	8	9	10	11	12	13	14	15	16	17	18	19	20
21	22																		

Flown: 100% (22/22)

Green: 100% (22/22)

Yellow: 0% (0/22)

Red: 0% (0/22)

### D15|CTWD\_P2 (NEON Research Support Services - Northern Utah Cottonwood Priority 2)

23	24	25	26	27	28	29
----	----	----	----	----	----	----

Flown: 100% (7/7)

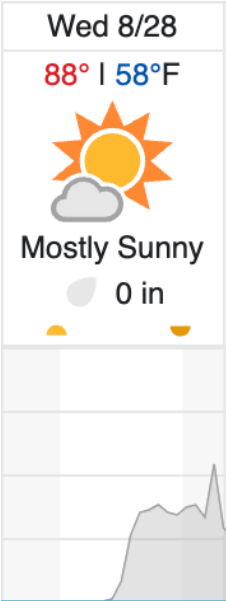
Green: 100% (7/7)

Yellow: 0% (0/7)

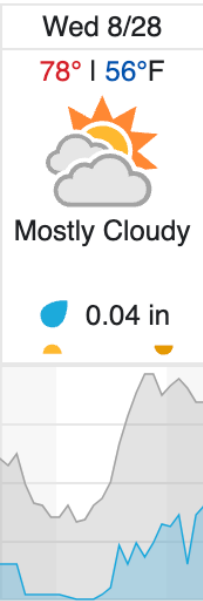
Red: 0% (0/7)

Weather Forecast

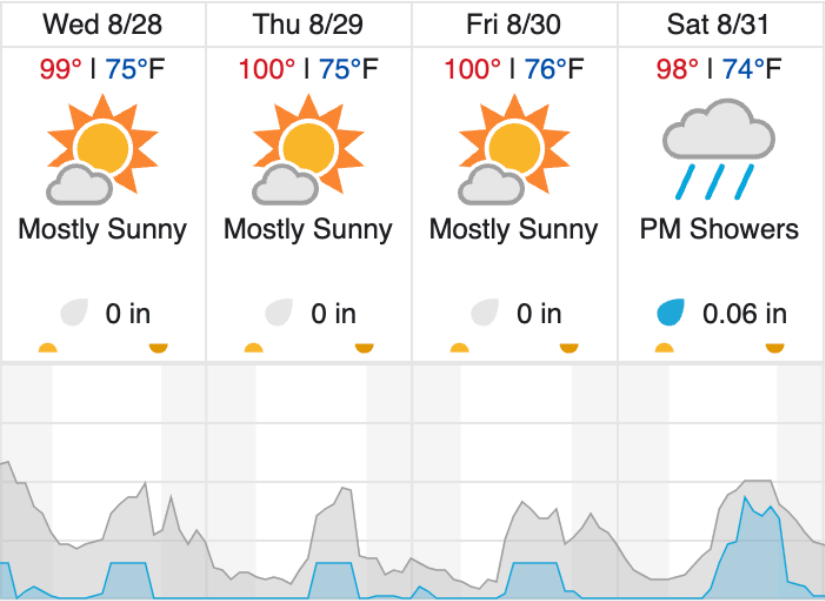
Boulder, CO



Santa Fe, NM



Tucson, AZ



Cloud Cover (%)	Chance of Precip. (%)
-----------------	-----------------------

source: wunderground.com

Flight Collection Plan for August 28<sup>th</sup>, 2024

Transit the Twin Otter from KBDU to KTUS

Crew: Mitch