



## Payload 3 Daily Flight Report



**Date:** 2024-09-05

**Flight Campaign ID:** P3C1

**Airport, FBO ID, City:** Tucson International Airport (KTUS) - Tucson, AZ

**Aircraft:** N821AR

**Domain:** 14 (Desert Southwest)

**Sites Flown:** SRER\_P3 (Santa Rita Experimental Range Priority 3 )

**Days left in Domain:** 1

**Report Author:** Mitch

**Lidar Operators:** Mitch

**Spectrometer Operators:** Cameron

**Pilots:** Manning, Vince

**Flight Hours:** 02:26

**Hours until maintenance:** 61.70

**GPS Instruments:** 03 - KTUS, AOP\_SRER

### Summary

Crew was able to take advantage of another clear day in Tucson to collect the final 19 remaining lines over the SRER flight box green conditions. This concludes SRER collections in D14, pending successful extraction and QAQC of data.

### Concerns

We were able to confirm that the temporary power outage at the SRER hut that occurred during yesterday's flight did shut off our GPS (AOP\_SRER). An alternative Smartnet station (S-AZAM) has been identified that should satisfy our 20km requirements for most of the lines flown.

### Comments

None

### Daily Coverage

Estimated Cloud Cover Key

Green:	Yellow:	Red:
0-10%	11-50%	>50%

Solar Angle Less Than 40 degrees

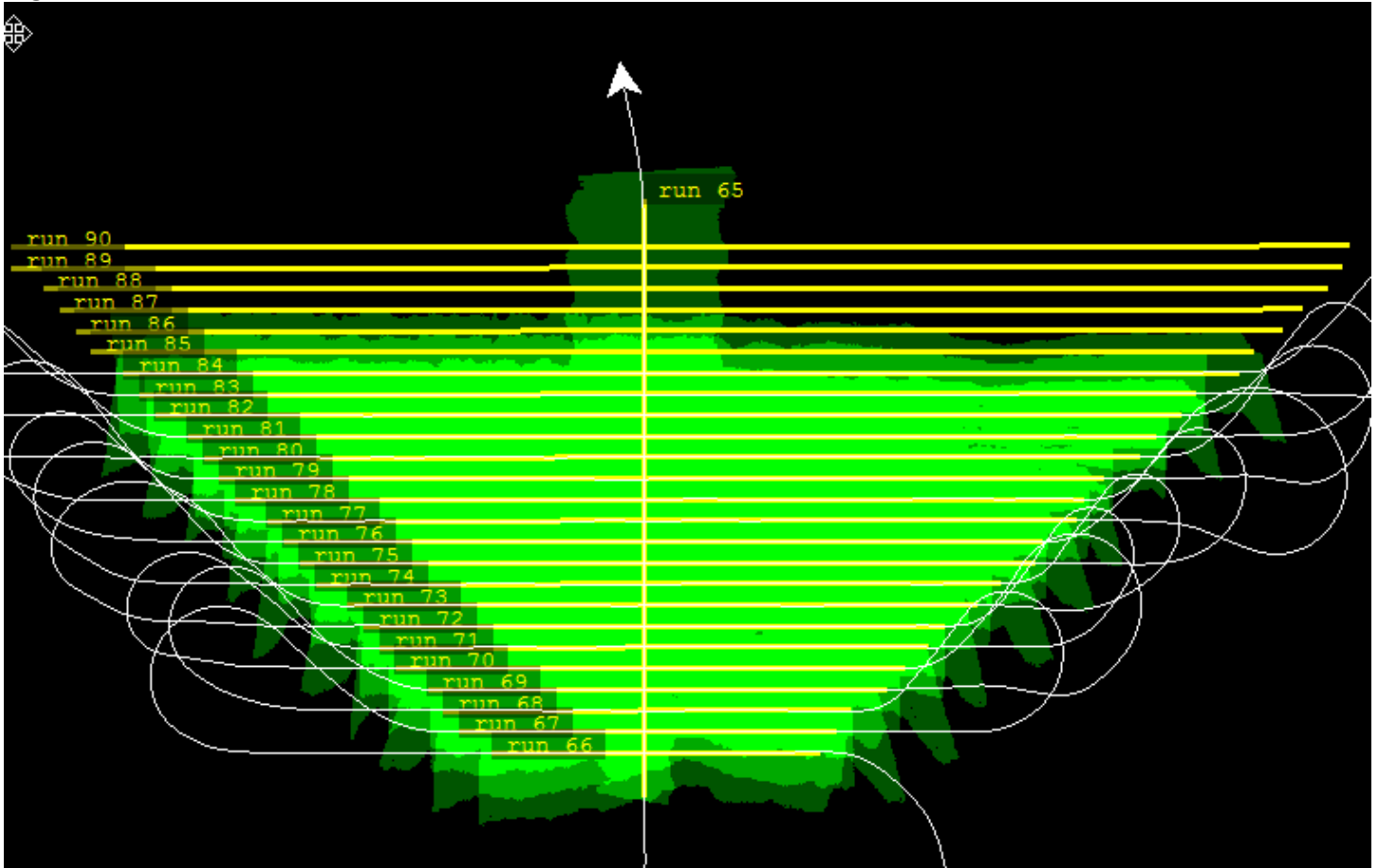
Line #
--------

D14|SRER\_P3

Line #	66	67	68	69	70	71	72	73	74	75	76	77	78	79	80	81	82	83	84
Lidar	✓	✓	✓	✓	✓	✓	✓	✓	✓	✓	✓	✓	✓	✓	✓	✓	✓	✓	✓
Spectrometer	✓	✓	✓	✓	✓	✓	✓	✓	✓	✓	✓	✓	✓	✓	✓	✓	✓	✓	✓
Camera	✓	✓	✓	✓	✓	✓	✓	✓	✓	✓	✓	✓	✓	✓	✓	✓	✓	✓	✓
Cloud Cover																			

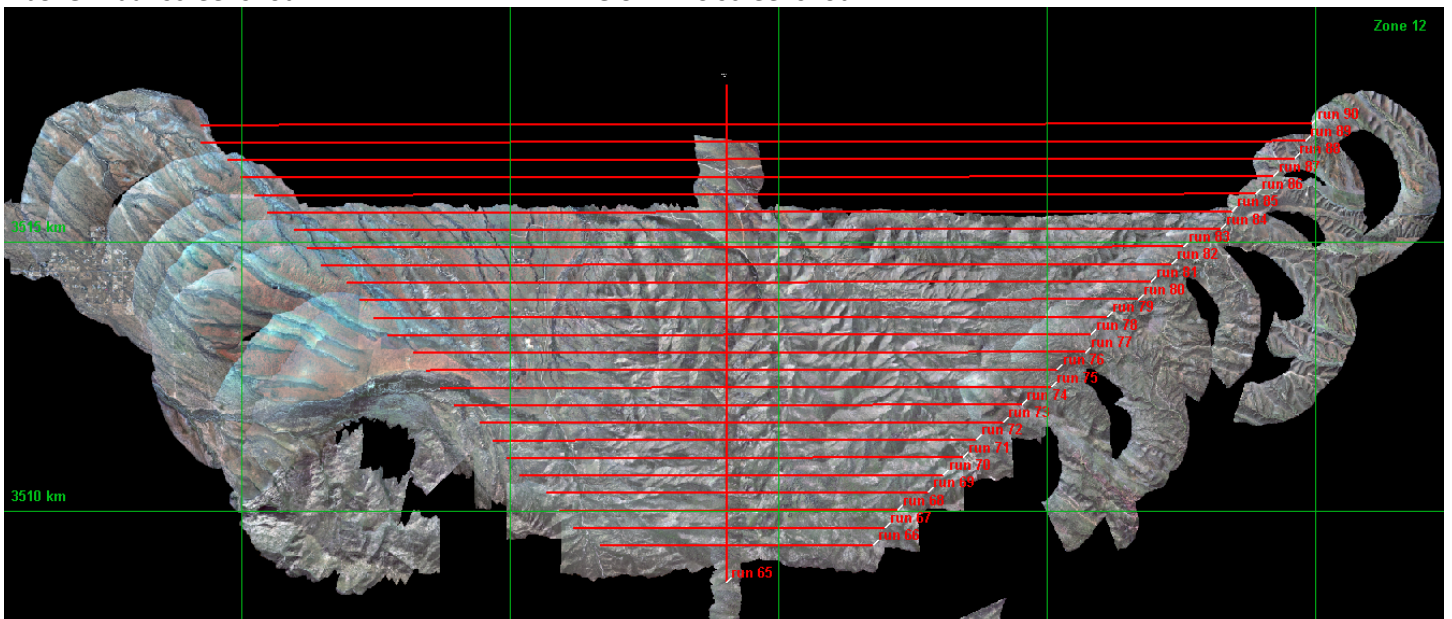
Total number of lines flown: 19

## Flight Screenshots



**Above:** Lidar screenshot

**Below:** NIS screenshot





**Pictures:** Getting up close views of Mt Wrightson and the Santa Rita range today.



**Cumulative Domain Coverage**

D14|SRER\_P1 (Santa Rita Experimental Range Priority 1 )

2	3	4	5	6	7	8	9	10	11	12	13	14	15	16	17	18	19	20	21
22	23	24	25	26	27	28	29	30	31	32	33	34	35	36	37	38	39	40	

Flown: 100% (39/39)  
Green: 100% (39/39)  
Yellow: 0% (0/39)  
Red: 0% (0/39)

D14|SRER\_P2 (Santa Rita Experimental Range Priority 2)

42	43	44	45	46	47	48	49	50	51	52	53	54	55	56	57	58	59	60	61
62	63	64																	

Flown: 100% (23/23)  
Green: 100% (23/23)  
Yellow: 0% (0/23)  
Red: 0% (0/23)

D14|SRER\_P3 (Santa Rita Experimental Range Priority 3 )

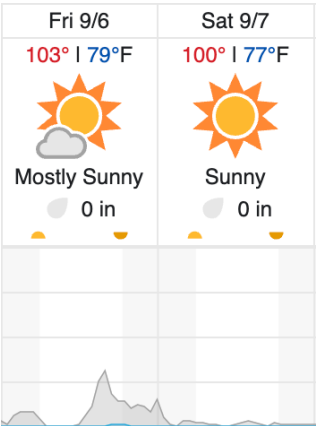
66	67	68	69	70	71	72	73	74	75	76	77	78	79	80	81	82	83	84	85
86	87	88	89	90															

Flown: 100% (25/25)

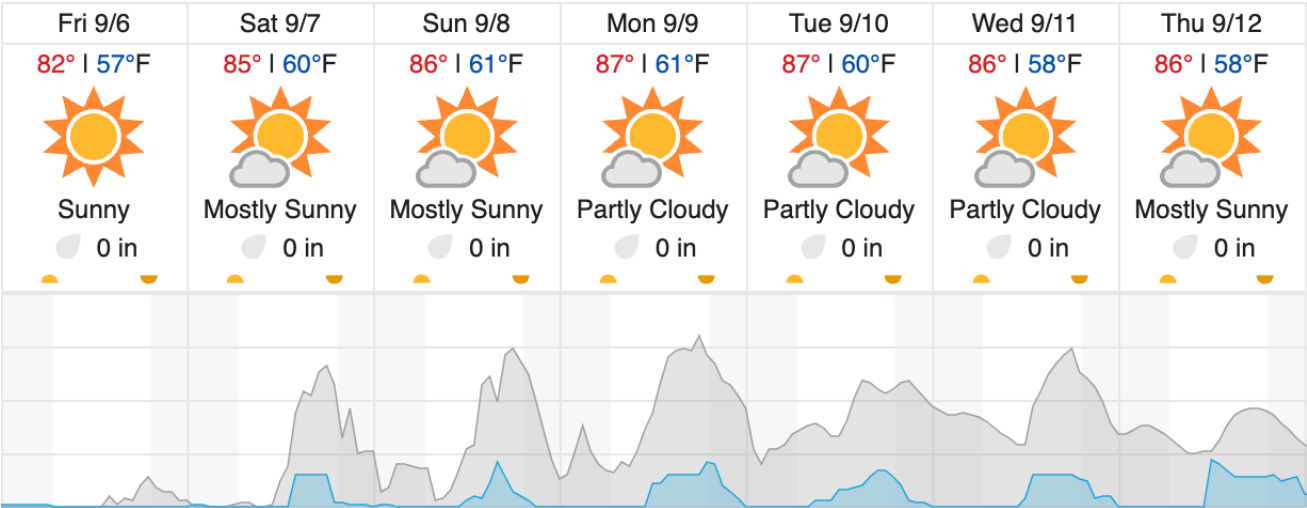
Green: 100% (25/25)  
Yellow: 0% (0/25)  
Red: 0% (0/25)

Weather Forecast

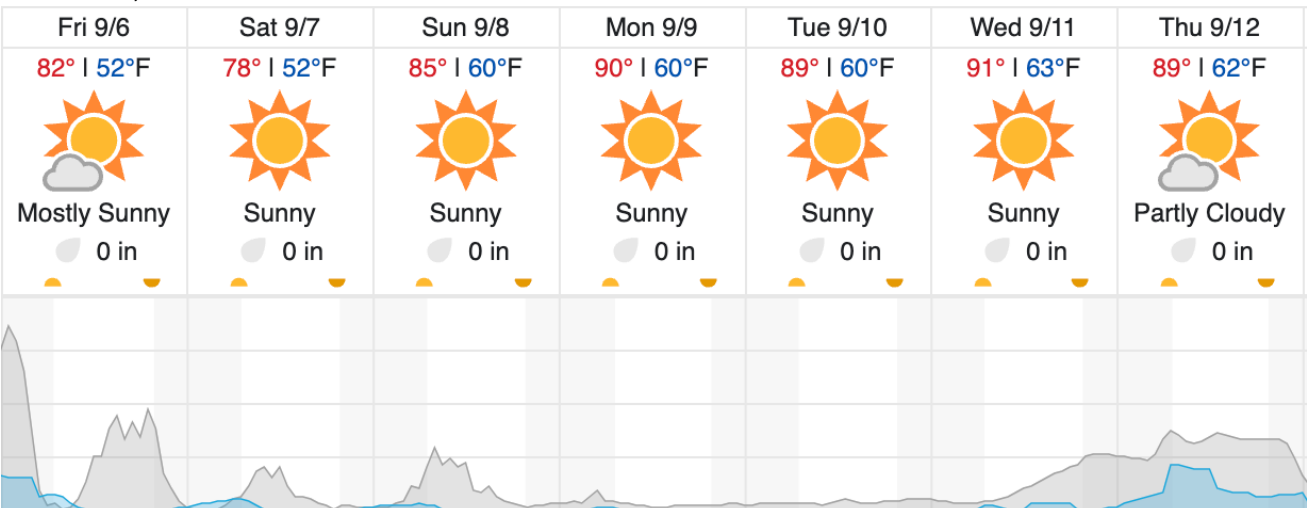
Tucson, AZ



Boulder, CO



Manhattan, KS



Cloud Cover (%)	Chance of Precip. (%)
-----------------	-----------------------

source: wunderground.com

## **Flight Collection Plan for 06 September 2024**

Finish data extraction and QAQC of data; make preparations for Saturday's transit.

**Crew:** Cam, Mitch