



Payload 3 Daily Flight Report



Date: 2024-09-07

Flight Campaign ID: P3C1

Airport, FBO ID, City: Tucson International Airport (KTUS) - Tucson, AZ; Santa Fe Regional Airport (KSAF) - Santa Fe, NM; Liberal Mid-America Regional Airport (KLBL) - Liberal, KS; Topeka Regional Airport (KFOE) - Topeka, KS

Aircraft: N821AR

Domain: 06 (Prairie Peninsula)

Sites Flown: Transit (KTUS -> KSAF -> KLBL -> KFOE)

Days left in Domain: 4

Report Author: Mitch

Lidar Operators: Mitch **Flight Hours:** 02:21, 01:45, 01:54

Spectrometer Operators: **Hours until maintenance:** 55.70

Pilots: Vince, Manning

Ground Crew: Cameron

Summary

Crew successfully transited from Tucson to Topeka in preparation for a refly of the D06 KONZ-KONA flight box, specifically prioritizing the KONA cfc sampling locations due to a late summer peak greenness crop yield.

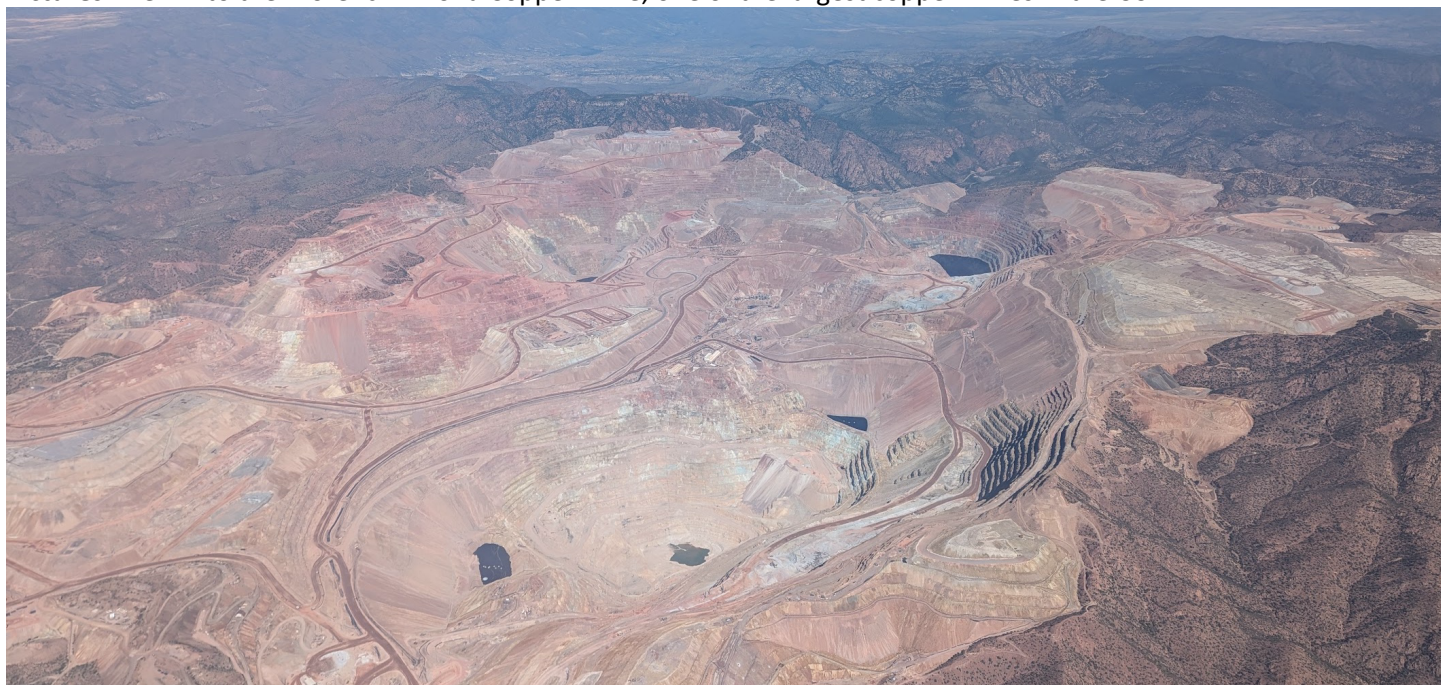
Concerns

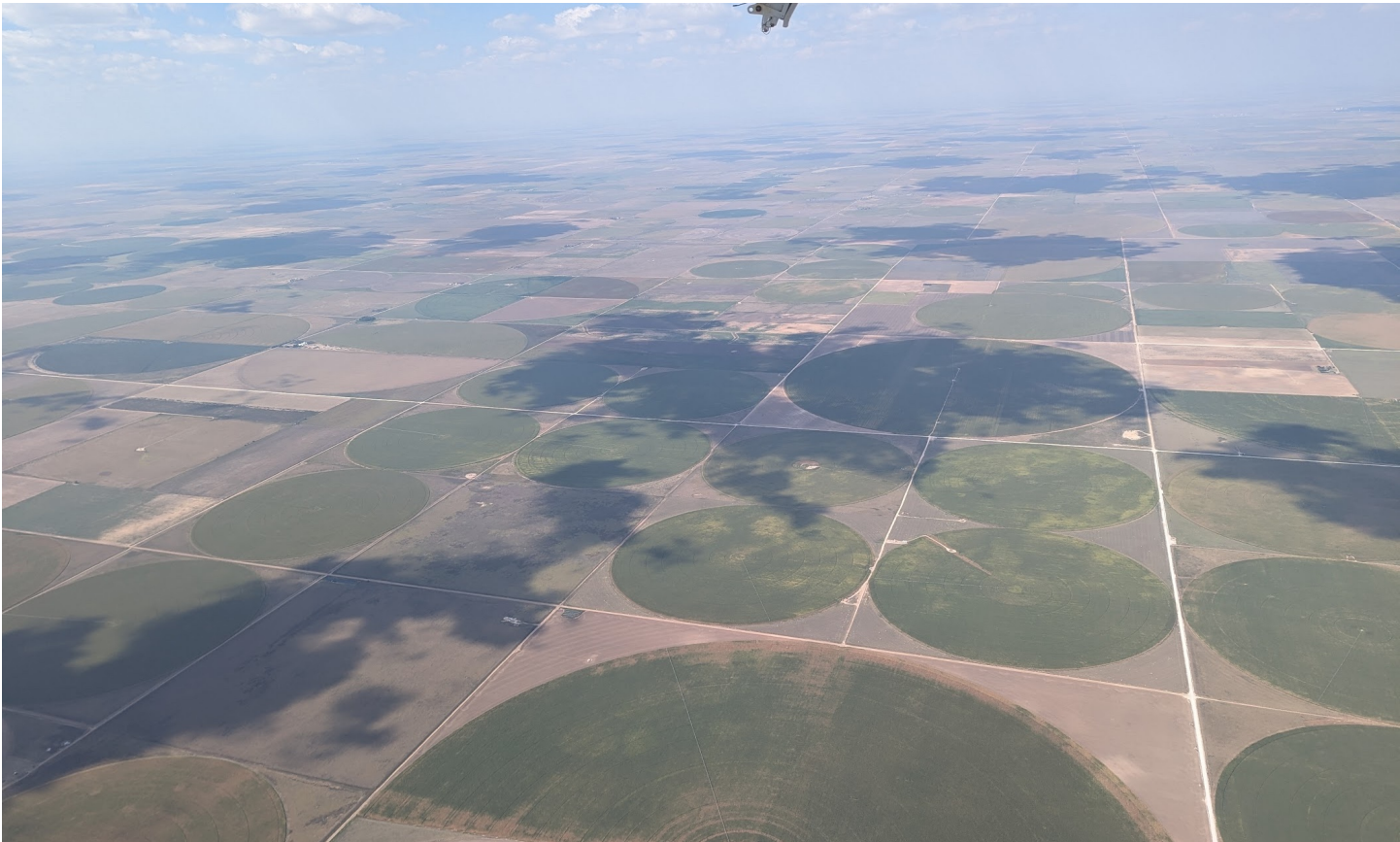
None

Comments

None

Pictures: View into the Morenci Arizona Copper mine, one of the largest copper mines in the US.





Above: Views transitioned to agricultural fields as we entered Kansas. A somewhat prominent haze layer was visible throughout much of the Kansas legs.

Cumulative Domain Coverage

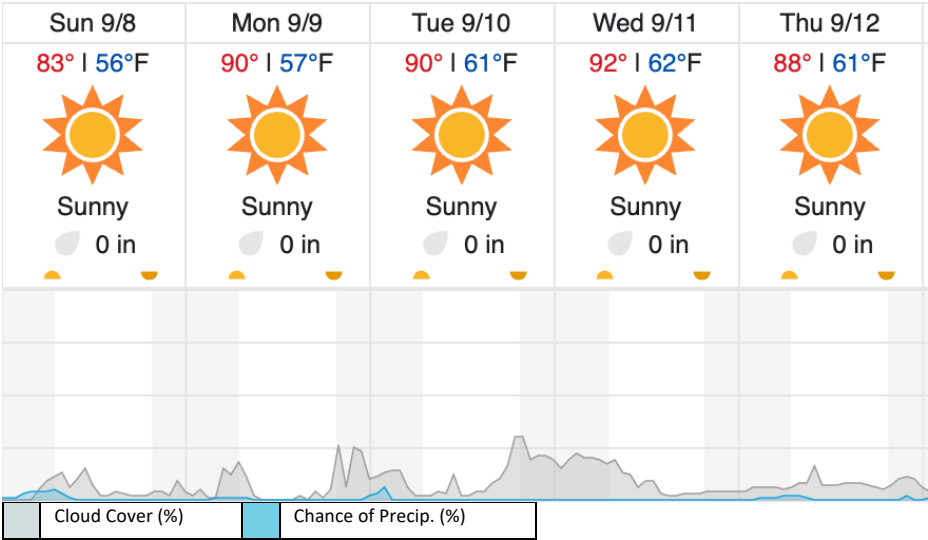
D06 | KONZ_KONA (Konza Prairie Biological Station and Relocatable Agricultural Site)

4	5	6	7	8	9	10	11	12	13	14	15	16	17	18	19	20	21	22	23
24	25	26	27	28	29	30	31	32	33	34	35	36	37	38					

Flown: 0% (0/35)
 Green: 0% (0/35)
 Yellow: 0% (0/35)
 Red: 0% (0/35)

Weather Forecast

Manhattan, KS (KONZ-KONA)



source: wunderground.com

Flight Collection Plan for September 8 2024

Flyority 1

Collection Area: Konza Prairie Biological Station (KONZ) – Konza Agricultural Site (KONA)

Flight Plan Name: D06_KONZ_KONA_C1_P1_v4_Q780

On-station Time: 1550 UTC / 1050 L

Notes: 1) Priority 1 lines over KONA CFC sampling locations: 25-27, 34-37; 2) Priority 2 lines over the remainder of KONA
TOS: 14-16, 28-30, 32-33.

Crew: Cam (Lidar), Mitch (NIS)