



Payload 3 Daily Flight Report

Date: 2025-05-15

Flight Campaign ID: P3C1

Airport, FBO ID, City: Gainesville Regional Airport (KGNV) - Gainesville, FL

Aircraft: N821AR

Domain: 03 (Southeast)

Sites Flown: OSBS_P1 (Ordway-Swisher Biological Station Priority 1)

Days left in Domain: 6

Report Author: Cameron

Lidar Operators: Cameron

Flight Hours: 03:14

Spectrometer Operators: John

Hours until maintenance: 97.03

Pilots: Justin, Jeff

GPS Instruments: AOP_OSBS

Summary

The crew was able to collect the P1 flight box at Ordway-Swisher Biological Station in cloud free conditions this morning.

Concerns

- The pilot navigation I-pad lost communication with tracker snapshot and never regained connection. The pilots were able to pivot and use the KML on their tablets to fly the lines! Nice work!
- The Telemetry computer was not properly syncing Dropbox, a full reboot was required to establish connection and sync properly.
- Booting NIS caused a drain on the UPS again today. Crew waited until survey power to preform NIS startups.
- Prescribed burns near flight lines created smoke in the area.

Comments

- Elissa arrives in D03 tonight

Daily Coverage

Estimated Cloud Cover Key

Green:	Yellow:	Red:
0-10%	11-50%	>50%

Solar Angle Less Than 40 degrees: (*)

D03|OSBS_P1

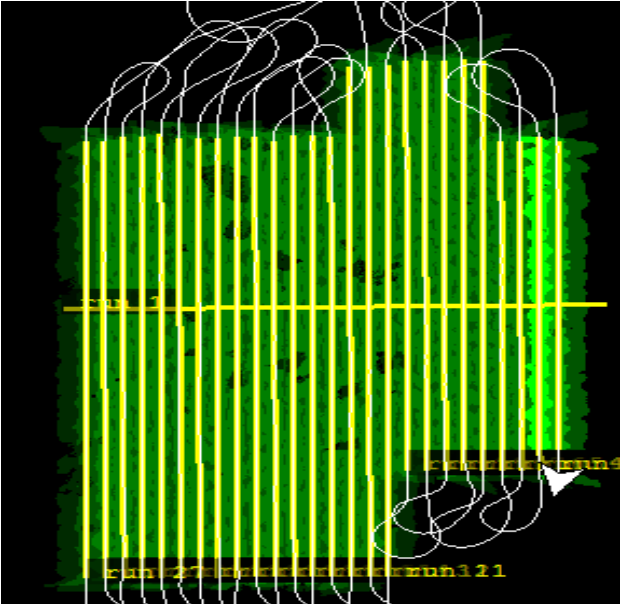
Line #	2	3	4	5	6	7	8	9	10	11	12	13	14	15	16	17	18	19	20	21
Lidar	✓	✓	✓	✓	✓	✓	✓	✓	✓	✓	✓	✓	✓	✓	✓	✓	✓	✓	✓	✓
Spectrometer	✓	✓	✓	✓	✓	✓	✓	✓	✓	✓	✓	✓	✓	✓	✓	✓	✓	✓	✓	✓
Camera	✓	✓	✓	✓	✓	✓	✓	✓	✓	✓	✓	✓	✓	✓	✓	✓	✓	✓	✓	✓
Cloud Cover																				

Line #	22	23	24	25	26	27
Lidar	✓	✓	✓	✓	✓	✓

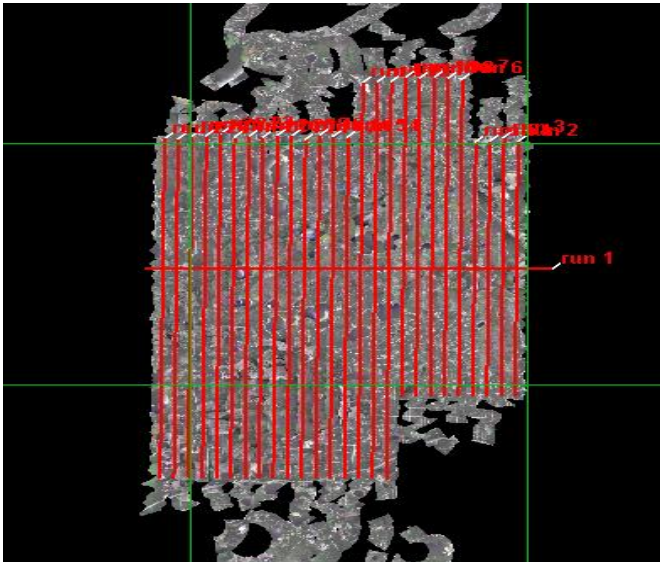
Spectrometer	✓	✓	✓	✓	✓	✓
Camera	✓	✓	✓	✓	✓	✓
Cloud Cover						

Total number of lines flown: 26

Flight Screenshots



Lidar Swath
GeoPaint



NIS

Pictures

Coming in for a landing at Gainesville’s Airport after our flight over Ordway-Swisher this morning.



Cumulative Domain Coverage

D03 | DSNY (Disney Wilderness Preserve)

1	2	3	4	5	6	7	8	9	10	11	12	13	14	15	16	17	18	19	20
21	22	23	24	25	26	27	28	29	30	31	32	33	34	35	36				

Flown: 0% (0/36)

Green: 0% (0/36)

Yellow: 0% (0/36)

Red: 0% (0/36)

* Flown within 35deg solar angle

D03 | OSBS_P1 (Ordway-Swisher Biological Station Priority 1)

1	2	3	4	5	6	7	8	9	10	11	12	13	14	15	16	17	18	19	20
21	22	23	24	25	26	27													

Flown: 96% (26/27)

Green: 96% (26/27)

Yellow: 0% (0/27)

Red: 0% (0/27)

* Flown within 35deg solar angle

D03 | OSBS_P2 (Ordway-Swisher Biological Station Priority 2)

28	29	30	31	32	33	34	35	36	37	38	39	40	41	42	43
----	----	----	----	----	----	----	----	----	----	----	----	----	----	----	----

Flown: 100% (16/16)

Green: 0% (0/16)

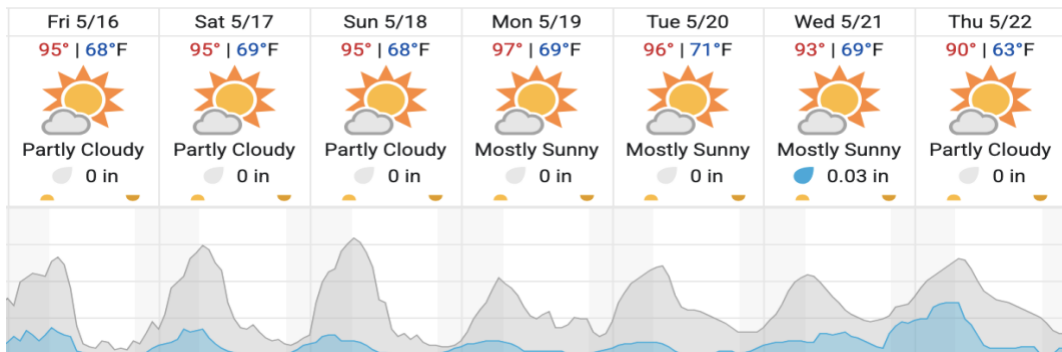
Yellow: 0% (0/16)

Red: 100% (16/16)

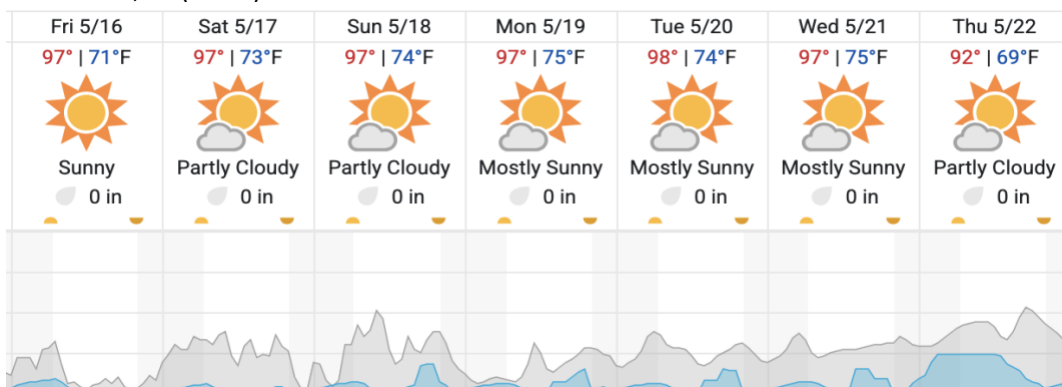
* Flown within 35deg solar angle

Weather Forecast

Gainesville, FL (OSBS)



Kissimmee, FL (DSNY)



Cloud Cover (%)	Chance of Precip. (%)
-----------------	-----------------------

source: wunderground.com

Flight Collection Plan for May 16, 2025

Flyority 1

Collection Area: Disney Wilderness Preserve (DSNY)

Flight Plan Name: D03_DSNY_R1_P1_v3_Q780

On-Station Time: 1400 UTC / 1000 L

Flyority 2 – Only if Green

Collection Area: Ordway-Swisher Biological Station (OSBS)

Flight Plan Name: D03_OSBS_C1_P2_v2_Q780_east

On-Station Time: 1400 UTC/ 1000 L

Flyority 2– Only if Green

Collection Area: Ordway-Swisher Biological Station (OSBS)

Flight Plan Name: D03_OSBS_C1_P2_v2_Q780_west

On-Station Time: 1400 UTC/ 1000 L

Crew: John (Lidar) Elissa (NIS) Cam (Ground)