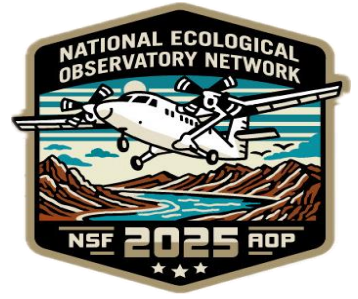




Payload 3 Daily Flight Report



Date: 2025-06-03

Flight Campaign ID: P3C1

Airport, FBO ID, City: Winchester Regional Airport (KOKV) - Winchester, VA

Aircraft: N821AR

Domain: 02 (Mid-Atlantic)

Sites Flown: SCBI (Smithsonian Conservation Biology Institute)

Days left in Domain: 12

Report Author: Elissa

Lidar Operators: Elissa

Spectrometer Operators: Mitch

Pilots: Justin, Rob

Flight Hours: 01:42

Hours until maintenance: 81.67

GPS Instruments: 01 - KOKV, AOP_BLAN, AOP_SCBI

Summary

Another day of cloud-free skies, but unfortunately wildfire smoke reached the area and created moderate to thick haze. The decision was made to collect non-priority lines at SCBI in red. Another high pressure system is expected next week, following a couple more days of bad weather this weekend, however it's unclear if that may yield sufficiently long windows for green collection.

Concerns

- We are still awaiting permission to fly in the DC SFRA. Pilots expect to obtain it soon but most likely not by tomorrow.
- The pilot display continues to lose connectivity for short intervals, which results in the screen freezing for a second or two at a time. For now it is resolving itself, however it appears to be occurring more frequently.

Comments

None.

Daily Coverage

Estimated Cloud Cover Key

Green:	Yellow:	Red:
0-10%	11-50%	>50%

Solar Angle Less Than 40 degrees: (*)

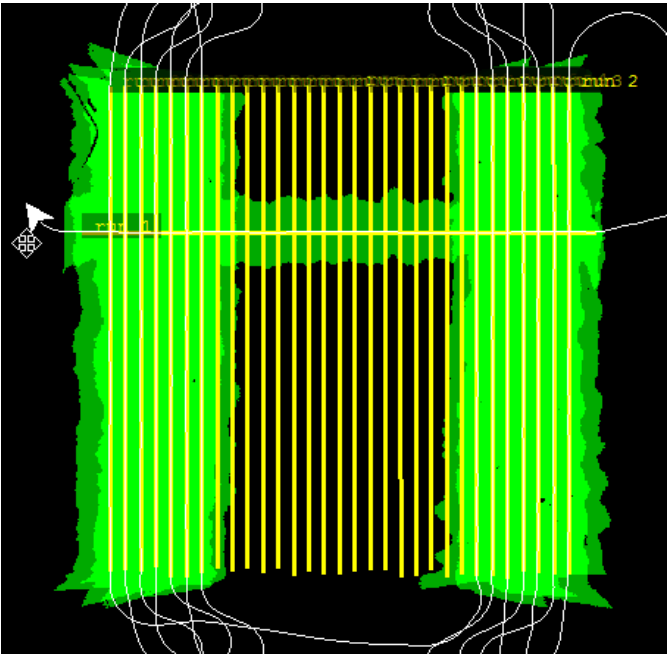
D02|SCBI

Line #	2	3	4	5	6	7	8	26	27	28	29	30	31	32
Lidar	✓	✓	✓	✓	✓	✓	✓	✓	✓	✓	✓	✓	✓	✓
Spectrometer	✓	✓	✓	✓	✓	✓	✓	✓	✓	✓	✓	✓	✓	✓
Camera	✓	✓	✓	✓	✓	✓	✓	✓	✓	✓	✓	✓	✓	✓
Cloud Cover														

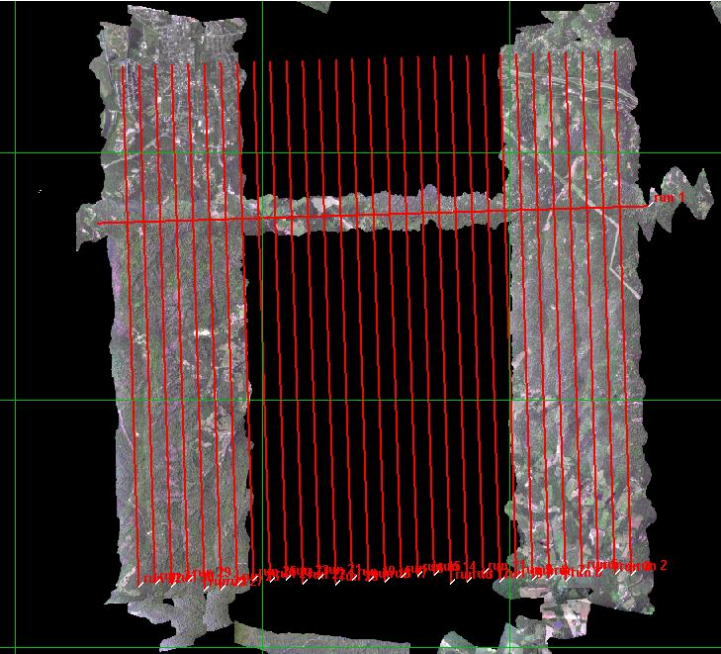
Total number of lines flown: 14

Flight Screenshots

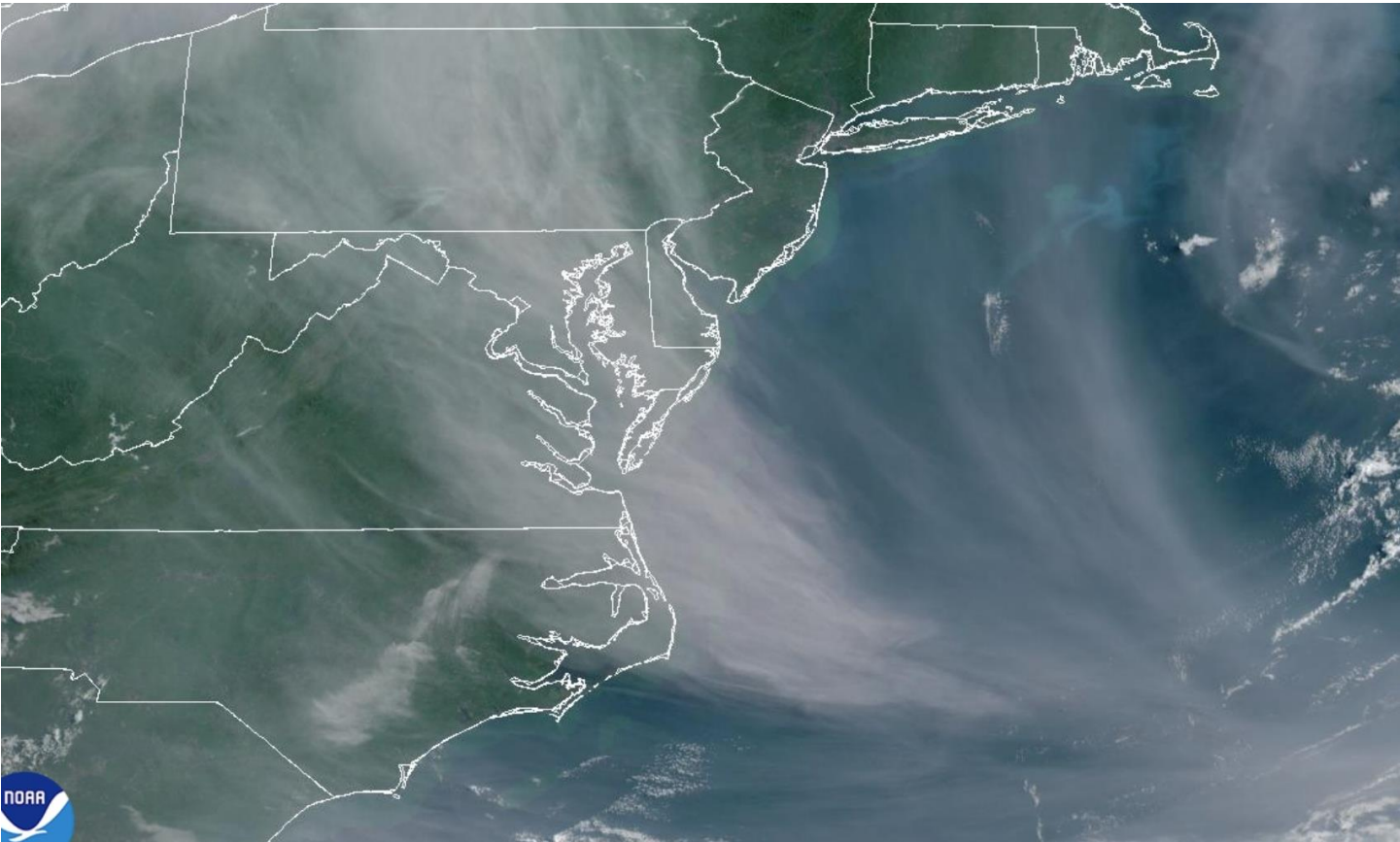
Lidar



NIS



Pictures



GOES-19 satellite imagery captured this morning prior to flight showing smoke blowing across the region from the Northwest.

Cumulative Domain Coverage

D02 | BLAN (Blandy Experimental Farm)

2	3	4	5	6	7	8	9	10	11	12	13	14	15	16	17	18	19	20	21
22	23	24	25	26	27	28	29	30	31	32	33								

Flown: 100% (32/32)
Green: 100% (32/32)
Yellow: 0% (0/32)
Red: 0% (0/32)
* Flown within 35deg solar angle

D02 | SCBI (Smithsonian Conservation Biology Institute)

2	3	4	5	6	7	8	9	10	11	12	13	14	15	16	17	18	19	20	21
22	23	24	25	26	27	28	29	30	31	32									

Flown: 45% (14/31)
Green: 0% (0/31)
Yellow: 0% (0/31)
Red: 45% (14/31)
* Flown within 35deg solar angle

D02 | SERC (Smithsonian Ecological Research Center)

2	3	4	5	6	7	8	9	10	11	12	13	14	15	16	17	18	19	20	21
22	23	24	25	26															

Flown: 0% (0/25)

Green: 0% (0/25)

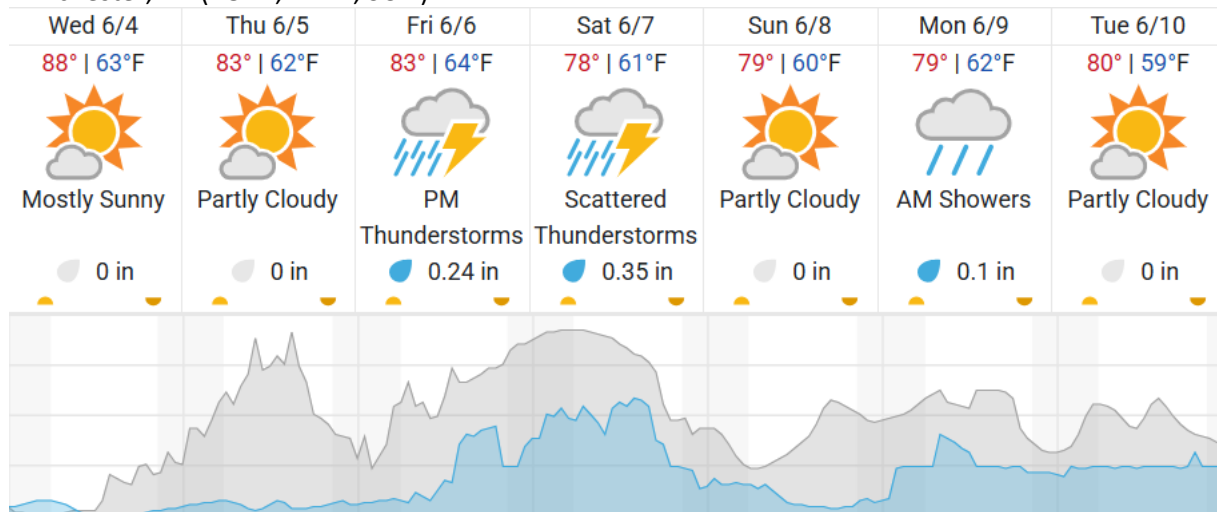
Yellow: 0% (0/25)

Red: 0% (0/25)

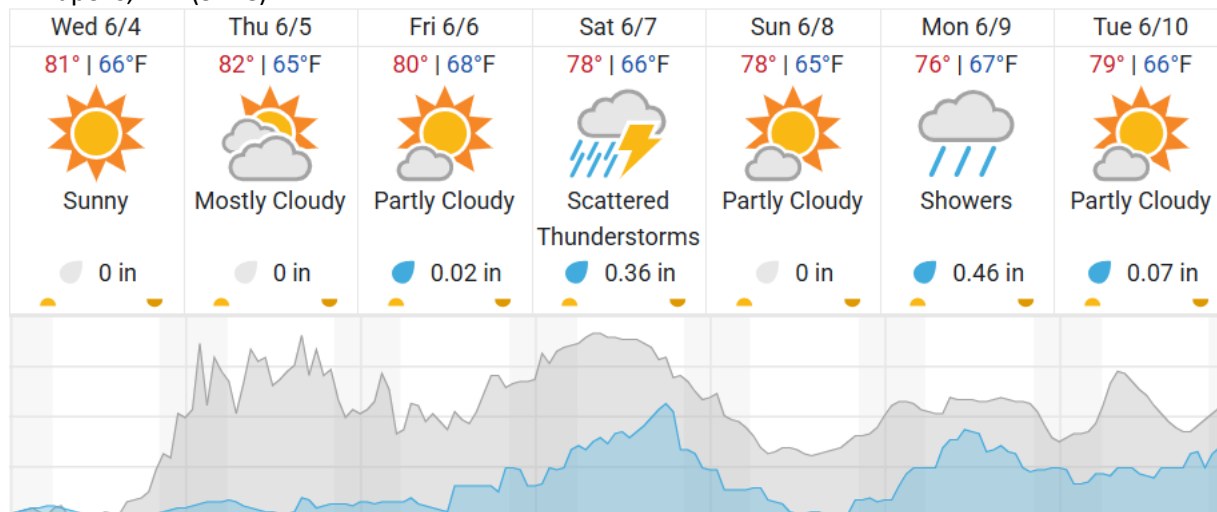
* Flown within 35deg solar angle

Weather Forecast

Winchester, VA (KOKV, BLAN, SCBI)



Annapolis, MD (SERC)



	Cloud Cover (%)		Chance of Precip. (%)
--	-----------------	--	-----------------------

source: wunderground.com

Flight Collection Plan for 4 June 2025

Flyority 1

Collection Area: Smithsonian Conservation Biology Institute (SCBI) – *lines 9-25*

Flight Plan Name: D02_SCBI_C1_P1_v1_Q780

On-Station Time: 1330 UTC / 0930 L

Flyority 2

Collection Area: Smithsonian Conservation Biology Institute (SCBI) – *lines 2-8 & 26-32 only if green*

Flight Plan Name: D02_SCBI_C1_P1_v1_Q780

On-Station Time: 1330 UTC / 0930 L

Flyority 3

Collection Area: Smithsonian Ecological Research Center (SERC)

Flight Plan Name: D02_SERC_R1_P1_v2_Q780

On-Station Time: 1330 UTC / 0930 L

Crew: Mitch (Lidar), Elissa (NIS)