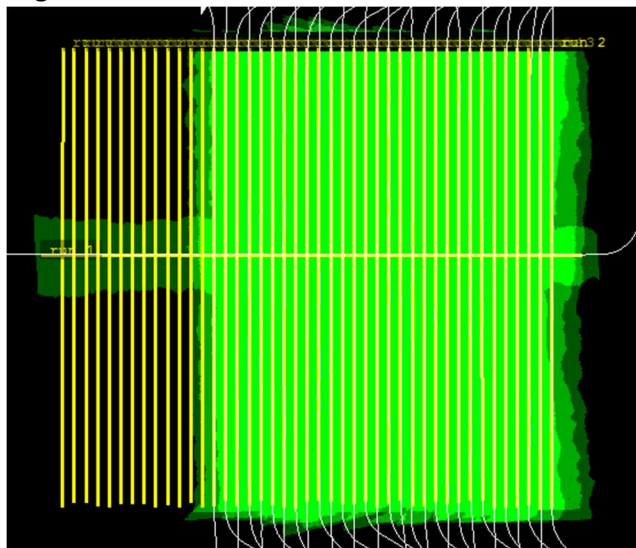


[illegible]

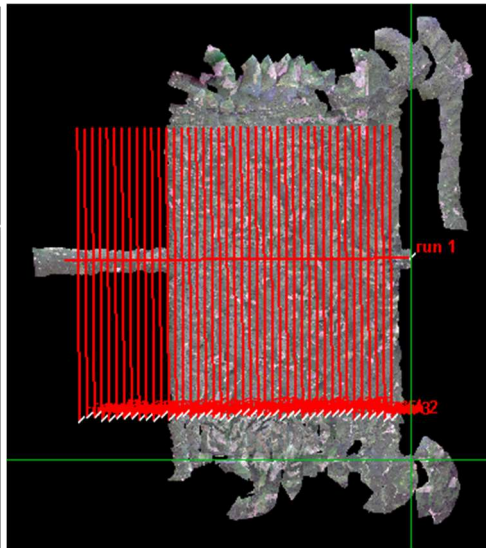
Line #	22	23	24	25	26	27	28	29	30	31
Lidar	✓	✓	✓	✓	✓	✓	✓	✓	✓	✓
Spectrometer	✓	✓	✓	✓	✓	✓	✓	✓	✓	✓
Camera	✓	✓	✓	✓	✓	✓	✓	✓	✓	✓
Cloud Cover										

Total number of lines flown: 30

Flight Screenshots



Lidar



NIS

Cumulative Domain Coverage

D16|ABBY (Abby Road)

1	2	3	4	5	6	7	8	9	10	11	12	13	14	15	16	17	18	19	20
21	22	23	24	25	26	27	28	29	30	31	32	33	34	35	36	37	38	39	40
41	42	43	44																

Flown: 70% (31/44)

Green: 0% (0/44)

Yellow: 43% (19/44)

Red: 27% (12/44)

* Flown within 35deg solar angle

D16|MCRA (McRae Creek)

1	2	3	4	5	6	7	8	9
---	---	---	---	---	---	---	---	---

Flown: 0% (0/9)

Green: 0% (0/9)

Yellow: 0% (0/9)

Red: 0% (0/9)

* Flown within 35deg solar angle

D16|WREF_P1 (Wind River Experimental Forest Priority 1)

1	2	3	4	5	6	7	8	9	10	11	12	13	14	15	16	17	18	19	20
21	22	23	24	25	26	27	28	29	30	31	32	33	34	35	36	37	38	39	40
41	42	43	44	45	46	47	48	49	50	51	52	53	54	55	56	57			

Flown: 100% (57/57)

Green: 98% (56/57)

Yellow: 2% (1/57)

Red: 0% (0/57)
* Flown within 35deg solar angle

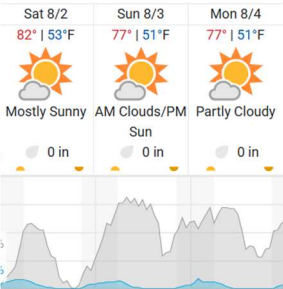
D16|WREF_P2 (Wind River Experimental Forest Priority 2)

58	59	60	61	62	63	64	65	66	67	68	69	70	71	72	73	74	75	76	77
78	79																		

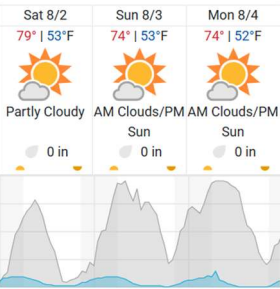
Flown: 100% (22/22)
Green: 0% (0/22)
Yellow: 100% (22/22)
Red: 0% (0/22)
* Flown within 35deg solar angle

Weather Forecast

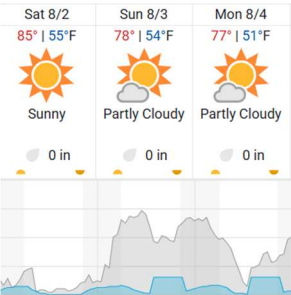
Hillsboro, OR (KHIO)



Battleground, WA (WREF, ABBY)



Mckenzie Bridge, OR (MCRA)



Cloud Cover (%)	Chance of Precip. (%)
-----------------	-----------------------

source: wunderground.com

Flight Collection Plan for 2 August 2025

Flyority 1

Collection Area: Abby Road (ABBY)
Flight Plan Name: D16_ABBY_R1_P1_v3_Q780
On-Station Time: 1650 UTC / 0950 L

Flyority 2

Collection Area: Wind River Experimental Forest (WREF) P2
Flight Plan Name: D16_WREF_C1_P2_v3_Q780
On-Station Time: 1650 UTC / 0950 L

Flyority 3

Collection Area: McRae Creek (MCRA)
Flight Plan Name: D16_MCRA_A2_P1_v1_Q780
On-Station Time: 1650 UTC / 0950 L

Crew: Nick (Lidar), Matt (NIS)

