



## Payload 3 Daily Flight Report

**Date:** 2025-09-08

**Flight Campaign ID:** P3C1

**Airport, FBO ID, City:** Tucson International Airport (KTUS) - Tucson, AZ

**Aircraft:** N821AR

**Domain:** 14 (Desert Southwest)

**Sites Flown:** SRER\_P1 (Santa Rita Experimental Range Priority 1 )

**Days left in Domain:** 7

**Report Author:** Cameron

**Lidar Operators:** Cameron

**Flight Hours:** 01:27

**Spectrometer Operators:** Mitch

**Hours until maintenance:** 69.62

**Pilots:** Vince, Greg

**GPS Instruments:** AOP\_SRER, C-PIMA

### Summary

The crew took advantage of clear morning skies and captured 12 lines in nominal atmospheric conditions before rapidly building cumulus clouds pushed conditions into undesirable levels.

### Concerns

- During engine starts the payload briefly lost survey power. This did not adversely affect data collections however we will continue to monitor.

### Comments

- None

### Daily Coverage

Estimated Cloud Cover Key

Green:	Yellow:	Red:
0-10%	11-50%	>50%

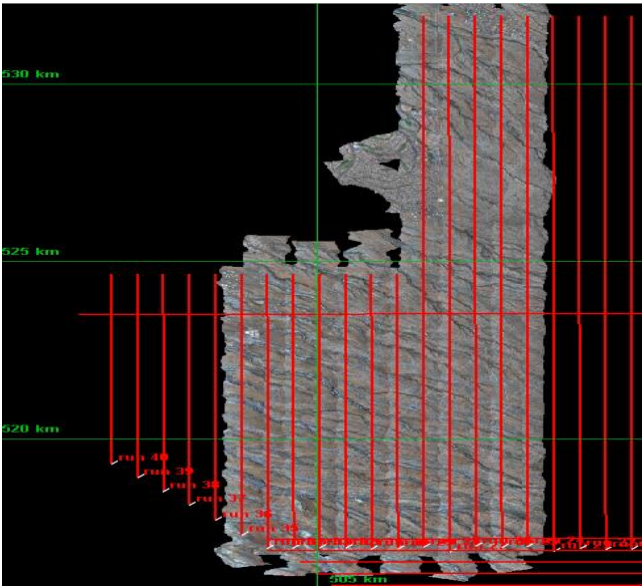
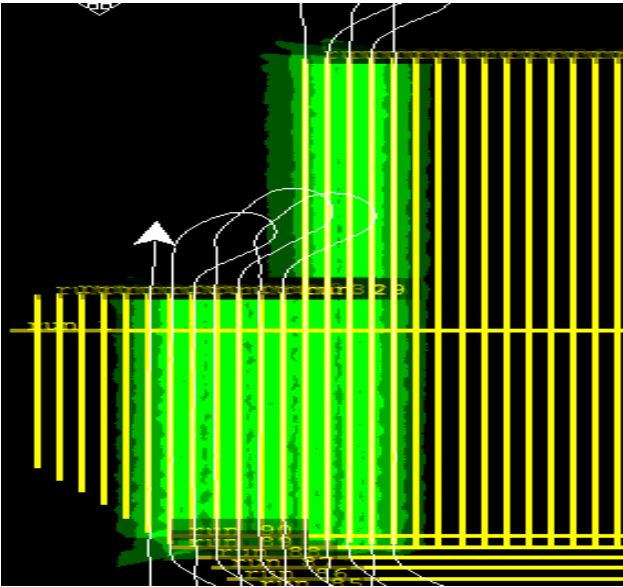
Solar Angle Less Than 40 degrees: (\*)

D14|SRER\_P1

Line #	24	25	26	27	28	29	30	31	32	33	34	35
Lidar	✓	✓	✓	✓	✓	✓	✓	✓	✓	✓	✓	✓
Spectrometer	✓	✓	✓	✓	✓	✓	✓	✓	✓	✓	✓	✓
Camera	✓	✓	✓	✓	✓	✓	✓	✓	✓	✓	✓	✓
Cloud Cover												

Total number of lines flown: 12

Flight Screenshots



Pictures



Cumulative Domain Coverage

D14|JORN\_P1 (Jornada Priority 1)

1	2	3	4	5	6	7	8	9	10	11	12	13	14	15	16	17	18	19	20
21	22	23	24	25	26	27	28	29	30	31	32	33	34						

Flown: 0% (0/34)

Green: 0% (0/34)

Yellow: 0% (0/34)

Red: 0% (0/34)

\* Flown within 35deg solar angle

D14|JORN\_P2 (Jornada Priority 2)

35	36	37	38	39	40	41	42	43	44	45	46	47	48	49	50	51	52	53	54
----	----	----	----	----	----	----	----	----	----	----	----	----	----	----	----	----	----	----	----

Flown: 0% (0/20)  
Green: 0% (0/20)  
Yellow: 0% (0/20)  
Red: 0% (0/20)  
\* Flown within 35deg solar angle

D14|SRER\_P1 (Santa Rita Experimental Range Priority 1 )

2	3	4	5	6	7	8	9	10	11	12	13	14	15	16	17	18	19	20	21
22	23	24	25	26	27	28	29	30	31	32	33	34	35	36	37	38	39	40	

Flown: 87% (34/39)  
Green: 87% (34/39)  
Yellow: 0% (0/39)  
Red: 0% (0/39)  
\* Flown within 35deg solar angle

D14|SRER\_P2 (Santa Rita Experimental Range Priority 2)

42	43	44	45	46	47	48	49	50	51	52	53	54	55	56	57	58	59	60	61
62	63	64																	

Flown: 0% (0/23)  
Green: 0% (0/23)  
Yellow: 0% (0/23)  
Red: 0% (0/23)  
\* Flown within 35deg solar angle

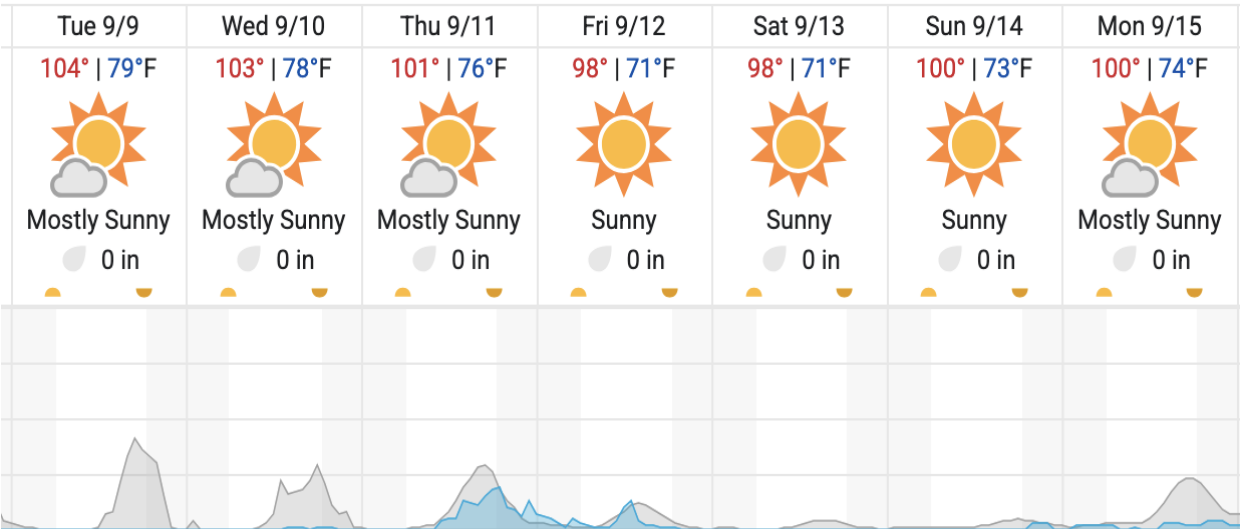
D14|SRER\_P3 (Santa Rita Experimental Range Priority 3 )

66	67	68	69	70	71	72	73	74	75	76	77	78	79	80	81	82	83	84	85
86	87	88	89	90															

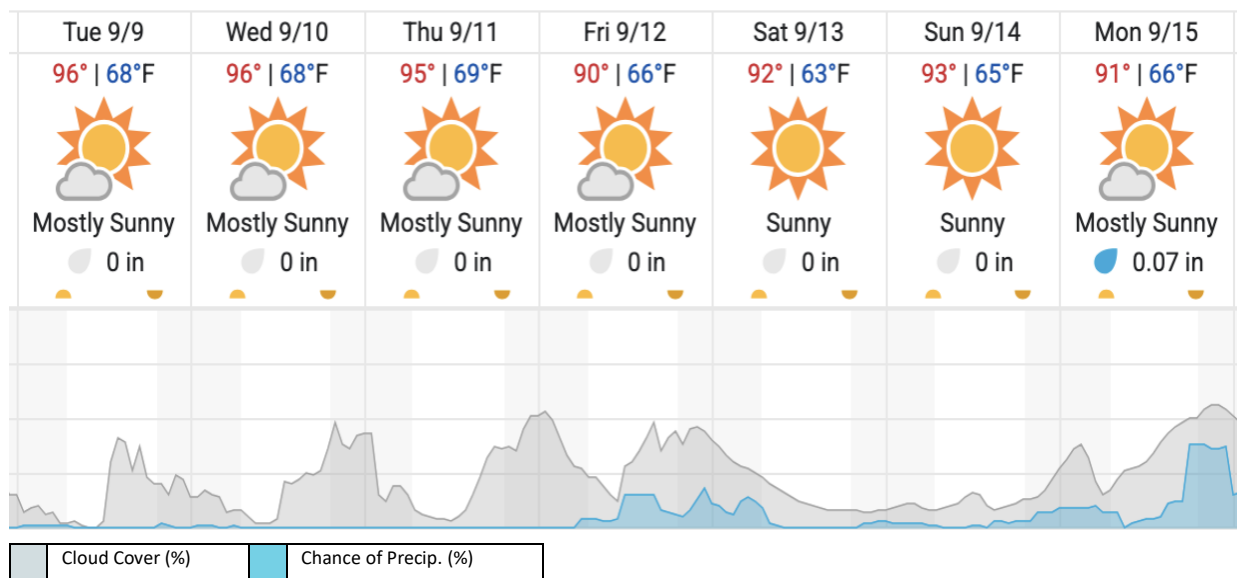
Flown: 0% (0/25)  
Green: 0% (0/25)  
Yellow: 0% (0/25)  
Red: 0% (0/25)  
\* Flown within 35deg solar angle

Weather Forecast

Tucson, AZ (SRER)



## Hatch, NM (JORN)



source: wunderground.com

## Flight Collection Plan for 09 September 2025

### Flyority 1 (*Lines 36-40*)

Collection Area: Santa Rita Experimental Range (SRER) P1

Flight Plan Name: D14\_SRER\_C1\_P1\_v8\_Q780

On-Station Time: 1620 UTC / 0920 L

### Flyority 2

Collection Area: Santa Rita Experimental Range (SRER) P2

Flight Plan Name: D14\_SRER\_C1\_P2\_v8\_Q780

On-Station Time: 1620 UTC / 0920 L

### Flyority 3

Collection Area: Santa Rita Experimental Range (SRER) P3

Flight Plan Name: D14\_SRER\_C1\_P3\_v8\_Q780

On-Station Time: 1620 UTC / 0920 L

### Flyority 4

Collection Area: Jornada (JORN) – Priority 1 Flight Box)

Flight Plan Name: D14\_JORN\_R1\_P1\_v4\_Q780

On-Station Time: 1540 UTC / 0820 L \*35 degree

### Flyority 5

Collection Area: Jornada (JORN) – Priority 2A Flight Box

Flight Plan Name: D14\_JORN\_R1\_P2\_v4\_Q780

On-Station Time: 1540 UTC / 0820 L \*35 degree

**Crew:** Mitch (Lidar), Cam (NIS)