



Payload 3 Daily Flight Report



Date: 2025-09-16

Flight Campaign ID: P3C1

Airport, FBO ID, City: Tucson International Airport (KTUS) - Tucson, AZ

Aircraft: N821AR

Domain: 14 (Desert Southwest)

Sites Flown: SRER_P3 (Santa Rita Experimental Range Priority 3)

Days left in Domain: 0

Report Author: Matt

Lidar Operators: Matt

Spectrometer Operators: Mitch

Pilots: Vince, Greg

Flight Hours: 02:08

Hours until maintenance: 48.63

GPS Instruments: AOP_SRER, C-PIMA

Summary

The crew finished up the Santa Rita Experimental Range (SRER) priority 3 site and prepped the aircraft for departure tomorrow morning.

Concerns

None.

Comments

The crew received permission to re-fly 2 lines for the Rocky Mountain Biological Laboratory at the Upper Taylor Watershed (UPTA) in the Crested Butte, CO area. Transit plan is to overnight in Farmington, NM and proceed to the UPTA area Thursday morning enroute to Boulder.

Daily Coverage

Estimated Cloud Cover Key

Green:	Yellow:	Red:
0-10%	11-50%	>50%

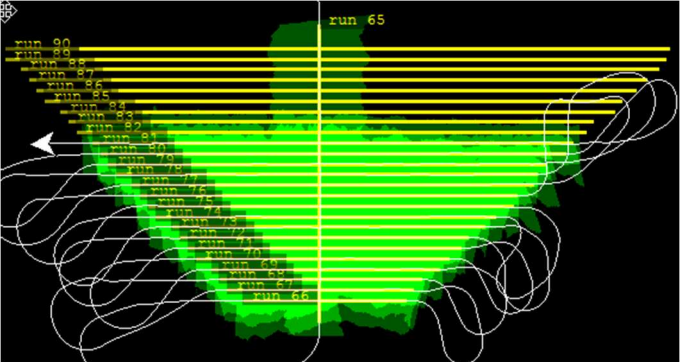
Solar Angle Less Than 40 degrees: (*)

D14|SRER_P3

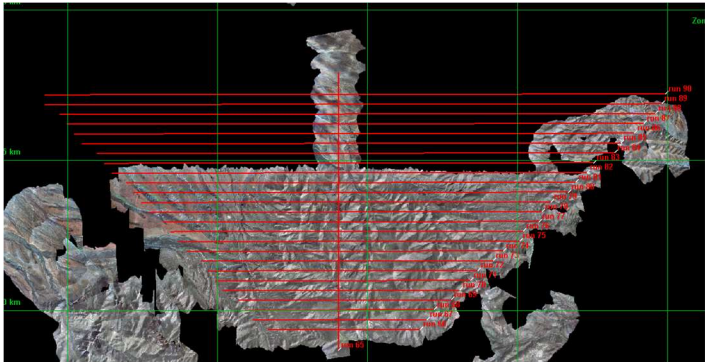
Line #	65	66	67	68	69	70	71	72	73	74	75	76	77	78	79	80	81
Lidar	✓	✓	✓	✓	✓	✓	✓	✓	✓	✓	✓	✓	✓	✓	✓	✓	✓
Spectrometer		✓	✓	✓	✓	✓	✓	✓	✓	✓	✓	✓	✓	✓	✓	✓	✓
Camera	✓	✓	✓	✓	✓	✓	✓	✓	✓	✓	✓	✓	✓	✓	✓	✓	✓
Cloud Cover																	

Total number of lines flown: 17

Flight Screenshots



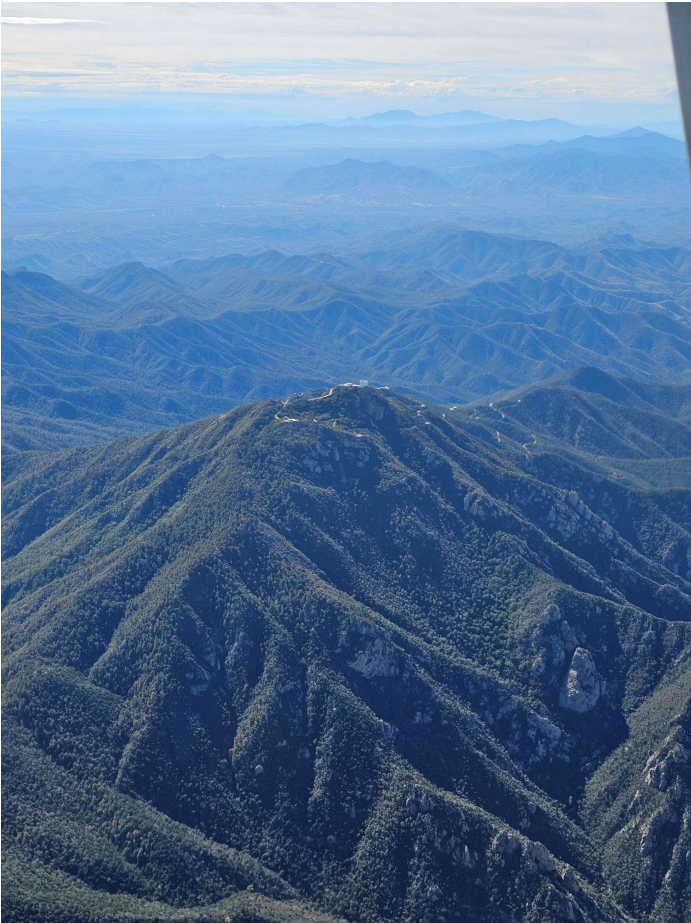
Lidar SRER P3



NIS SRER P3

Pictures

Looking south from the SRER P3 flight box



Cumulative Domain Coverage

D14|JORN_P1 (Jornada Priority 1)

1	2	3	4	5	6	7	8	9	10	11	12	13	14	15	16	17	18	19	20
21	22	23	24	25	26	27	28	29	30	31	32	33	34						

Flown: 100% (34/34)

Green: 79% (27/34)

Yellow: 12% (4/34)

Red: 9% (3/34)

* Flown within 35deg solar angle

D14|JORN_P2 (Jornada Priority 2)

35	36	37	38	39	40	41	42	43	44	45	46	47	48	49	50	51	52	53	54
----	----	----	----	----	----	----	----	----	----	----	----	----	----	----	----	----	----	----	----

Flown: 100% (20/20)

Green: 0% (0/20)

Yellow: 45% (9/20)

Red: 55% (11/20)

* Flown within 35deg solar angle

D14|SRER_P1 (Santa Rita Experimental Range Priority 1)

2	3	4	5	6	7	8	9	10	11	12	13	14	15	16	17	18	19	20	21
22	23	24	25	26	27	28	29	30	31	32	33	34	35	36	37	38	39	40	

Flown: 100% (39/39)

Green: 100% (39/39)

Yellow: 0% (0/39)

Red: 0% (0/39)

* Flown within 35deg solar angle

D14|SRER_P2 (Santa Rita Experimental Range Priority 2)

42	43	44	45	46	47	48	49	50	51	52	53	54	55	56	57	58	59	60*	61*
62*	63	64																	

Flown: 100% (23/23)

Green: 30% (7/23)

Yellow: 17% (4/23)

Red: 52% (12/23)

* Flown within 35deg solar angle

D14|SRER_P3 (Santa Rita Experimental Range Priority 3)

66*	67*	68*	69	70	71	72	73	74	75	76	77	78	79	80	81	82	83	84	85
86	87	88	89	90															

Flown: 100% (25/25)

Green: 0% (0/25)

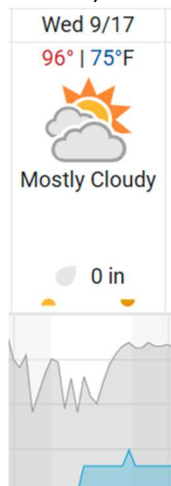
Yellow: 0% (0/25)

Red: 100% (25/25)

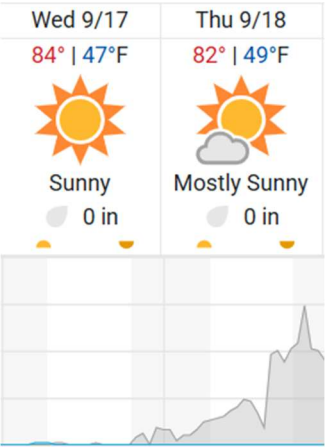
* Flown within 35deg solar angle

Weather Forecast

Tucson, AZ



Farmington, NM



source: wunderground.com

Flight Collection Plan for 17 September 2025

Transit