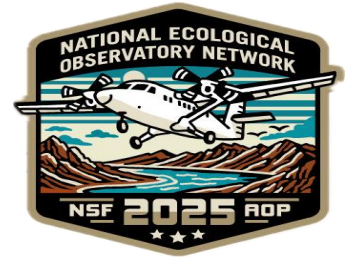




Payload 2 Daily Flight Report



Date: 2025-09-18

Flight Campaign ID: P2C1

Airport, FBO ID, City: Boulder Municipal Airport (KBDU) - Boulder, CO

Aircraft: N615AR

Domain: 00 (Training & Calibration)

Sites Flown: N10D (), R10D (Boulder Airport Radiometric Calibration), V10C (Boulder City South)

Days left in Domain: 2

Report Author: Elissa

Lidar Operators: Elissa

Spectrometer Operators: Cameron

Pilots: Justin, Troy

Adt'l Flight Crew: Brevin

Flight Hours: 02:24

Hours until maintenance: 117.57

GPS Instruments: AOP_KBDU

Ground Crew: Matt

Summary

Increasing cumulus clouds for the most part remained over the mountains today, enabling green data collection over Boulder airport, and limited red data collection of the Boulder City flight plan.

Concerns

Eye safety shutoff feature needs to be disabled in order to conduct calibration flight plans.

Comments

None.

Daily Coverage

Estimated Cloud Cover Key

Green:	Yellow:	Red:
0-10%	11-50%	>50%

Solar Angle Less Than 40 degrees: (*)

D10|N10D

Line #	1	2	3	4	5	6	21	22
Lidar	✓	✓	✓	✓	✓	✓	✓	✓
Spectrometer	✓	✓	✓	✓	✓	✓	✓	✓
Camera	✓	✓	✓	✓	✓	✓	✓	✓
Cloud Cover								

Total number of lines flown: 8

D10|R10D

Line #	1	2	3	4	5
Lidar	✓	✓	✓	✓	✓
Spectrometer	✓	✓	✓	✓	✓
Camera	✓	✓	✓	✓	✓
Cloud Cover					

Total number of lines flown: 5

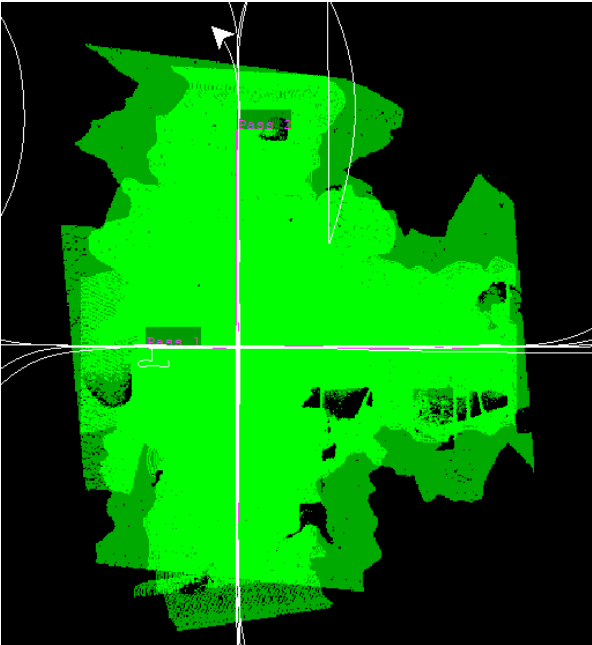
D00|V10C

Line #	1	2	3	4	20	21
Lidar	✓	✓	✓	✓	✓	✓
Spectrometer	✓	✓	✓	✓	✓	✓
Camera	✓	✓	✓	✓	✓	✓
Cloud Cover						

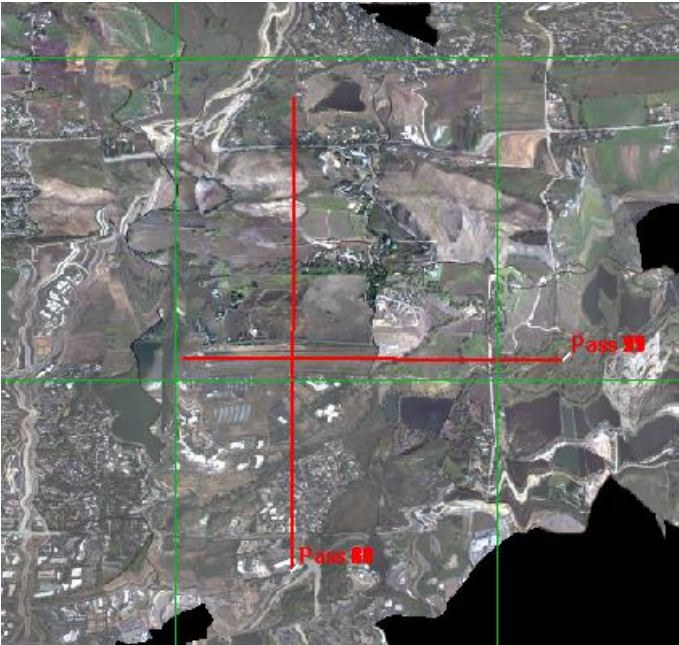
Total number of lines flown: 6

Flight Screenshots

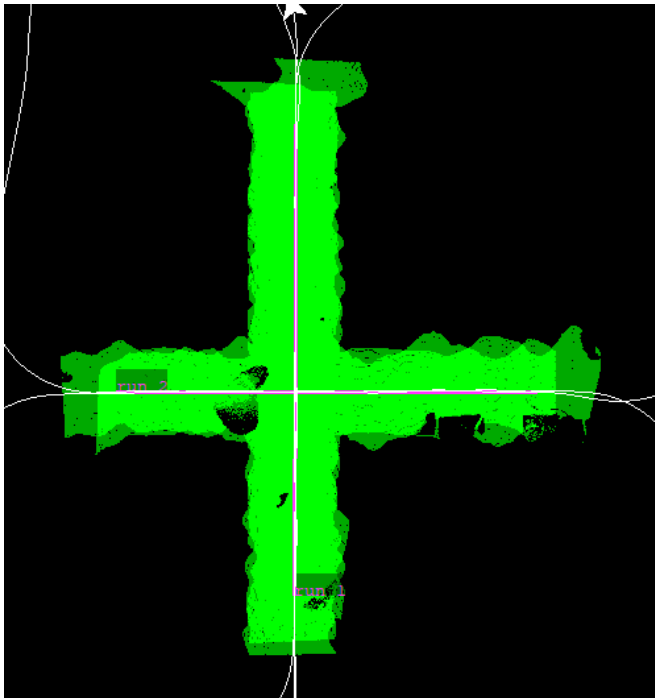
N10D – Lidar



NIS



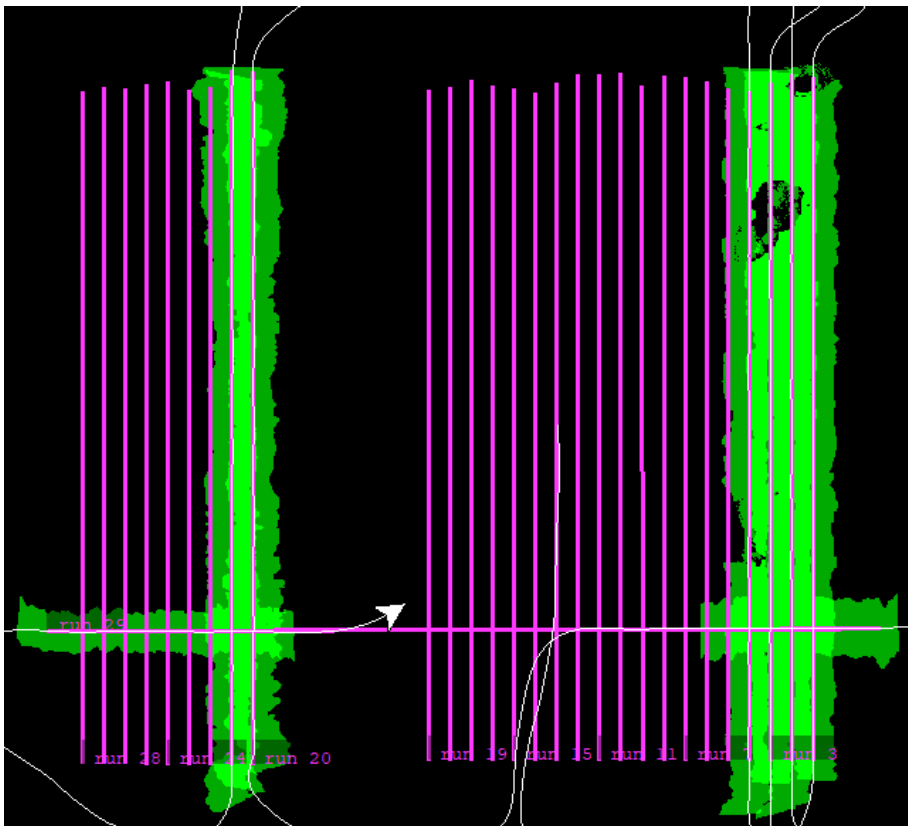
R10D – Lidar



NIS



V10C - Lidar



Cumulative Domain Coverage

D00|B10E (Riegl Boresight Calibration - 1600m, 1000m, 500m)

1	2	3	4	5	6	7	8	9	10	11	12	13	14	15	16	17	18	19	20
---	---	---	---	---	---	---	---	---	----	----	----	----	----	----	----	----	----	----	----

Flown: 100% (20/20)

Green: 100% (20/20)

Yellow: 0% (0/20)

Red: 0% (0/20)

* Flown within 35deg solar angle

D00|R10C (Table Mountain Radiometric Calibration - Riegl)

1	2	3	4	5
---	---	---	---	---

Flown: 100% (5/5)

Green: 40% (2/5)

Yellow: 60% (3/5)

Red: 0% (0/5)

* Flown within 35deg solar angle

D00|V10C (Boulder City)

1	2	3	4	5	6	7	8	9	10	11	12	13	14	15	16	17	18	19	20
21	22																		

Flown: 64% (14/22)

Green: 36% (8/22)

Yellow: 18% (4/22)

Red: 9% (2/22)

* Flown within 35deg solar angle

D10|H10C (Lidar HQ)

1	2	3	4
---	---	---	---

Flown: 100% (4/4)

Green: 0% (0/4)

Yellow: 0% (0/4)

Red: 100% (4/4)

* Flown within 35deg solar angle

D10|N10D (Nominal Runway)

1	2	3	4	5	6	7	8	9	10	11	12	13	14	15	16	17	18	19	20
21	22	23	24	25	26														

Flown: 100% (26/26)

Green: 31% (8/26)

Yellow: 0% (0/26)

Red: 69% (18/26)

* Flown within 35deg solar angle

D10|R10D (Boulder Airport Radiometric Calibration)

1	2	3	4	5
---	---	---	---	---

Flown: 100% (5/5)

Green: 100% (5/5)

Yellow: 0% (0/5)

Red: 0% (0/5)

* Flown within 35deg solar angle

D10|W10C (Wiggle Timing Test)

1	2
---	---

Flown: 100% (2/2)

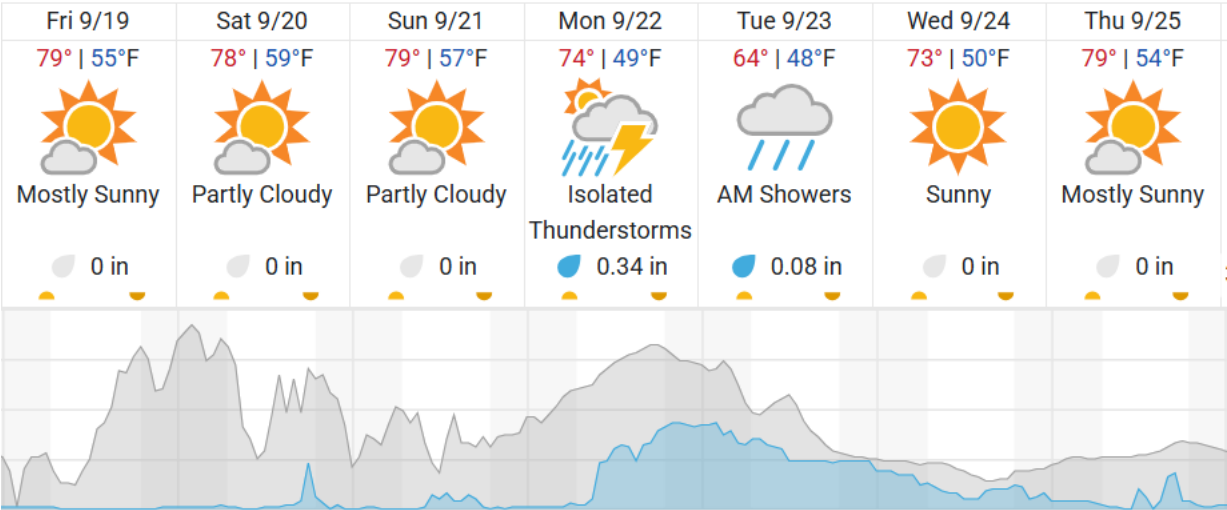
Green: 50% (1/2)

Yellow: 50% (1/2)

Red: 0% (0/2)

Weather Forecast

Boulder, CO (KBDU)



source: wunderground.com

Flight Collection Plan for 19 September 2025

Flyority 1

Collection Area: Table Mountain Radiometric Calibration
Flight Plan Name: D10_R10C_Rad_Cal_TBMT_v2_VQ780
45° On-station Time: 1653 UTC / 1053 L
Additional Considerations: Ground should be dry.

Flyority 2

Collection Area: Black Forest
Flight Plan Name: D10_BLKF_Black_Forest_v6_VQ780
40° On-station Time: 1620 UTC / 1020 L

Crew: Cameron (Lidar), Elissa (NIS), Nick (Ground)