



Payload 2 Daily Flight Report

Date: 2026-03-24

Flight Campaign ID: P2C1

Airport, FBO ID, City: Boulder Municipal Airport (KBDU) - Boulder, CO

Aircraft: N821AR

Domain: 00 (Training & Calibration)

Sites Flown: H10C (NEON Headquarters Lidar Test - Riegl), V10C (Boulder City South Nominal Science Flight)

Days left in Domain: 10

Report Author: John

Lidar Operators: John

Spectrometer Operators: Nick

Pilots: Justin, Manning

Ground Crew: Mitch

Flight Hours: 00:36 (V10C), 00:49 (V10C, H10C)

Hours until maintenance: 116.53

GPS Instruments: AOP_KBDU

Summary

Two training flights were completed today. Flight 1 had some lidar cutout problems, which were diagnosed after landing and consensus pointed to a faulty USB drive. Flight 2 worked well after we swapped the old USB drive to a USB-3 drive, no problems were encountered.

Today Nick completed his NIS check, while John and Matt completed their first of two lidar checkout flights.

Concerns

None.

Comments

Don't use USB-1 or -2 drives for the lidar POS disk E: position.

Daily Coverage

Estimated Cloud Cover Key

Green:	Yellow:	Red:
0-10%	11-50%	>50%

Solar Angle Less Than 40 degrees: (*)

D00|H10C

Line #	1	2
Lidar	✓	✓
Spectrometer	✓	✓
Camera	✓	✓
Cloud Cover	■	■

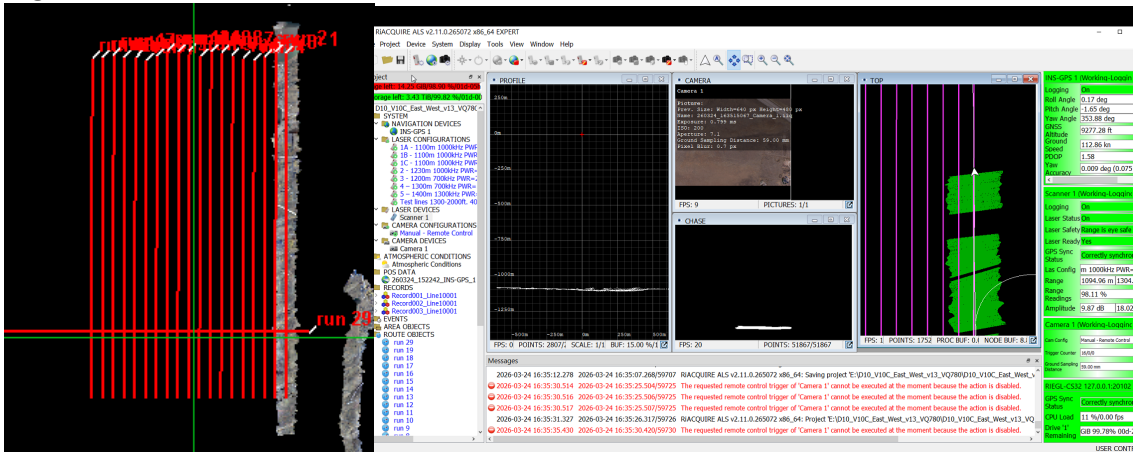
Total number of lines flown: 2

D00|V10C

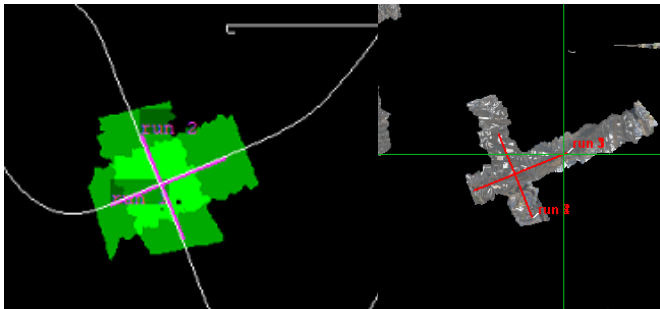
Line #	1	2
Lidar	✓	✓
Spectrometer	✓	✓
Camera	✓	✓
Cloud Cover		

Total number of lines flown: 2

Flight Screenshots

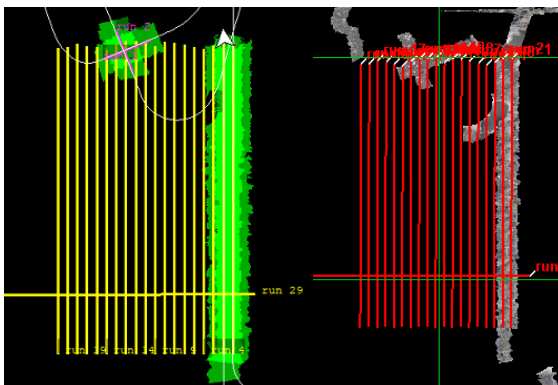


Flight #1 with lidar cutouts



Flight #2 NIS H10C

Flight #2 lidar H10C



Flight #2 NIS H10C

Flight #2 lidar H10C

Cumulative Domain Coverage

D00|B10E (Riegl Boresight Calibration - 1600m, 1000m, 500m)

1	2	3	4	5	6	7	8	9	10	11	12	13	14	15	16	17	18	19	20
---	---	---	---	---	---	---	---	---	----	----	----	----	----	----	----	----	----	----	----

Flown: 0% (0/20)

Green: 0% (0/20)

Yellow: 0% (0/20)

Red: 0% (0/20)

* Flown within 35deg solar angle

D00|H10C (NEON Headquarters Lidar Test - Riegl)

1	2	3	4
---	---	---	---

Flown: 100% (4/4)

Green: 100% (4/4)

Yellow: 0% (0/4)

Red: 0% (0/4)

* Flown within 35deg solar angle

D00|N10D (Nominal Runway at KBDU - Riegl VQ780_II S)

1*	2*	3*	4*	5*	6*	7*	8*	9*	10*	11*	12	13	14	15	16	17	18	19	20
21*	22*	23	24	25	26														

Flown: 100% (26/26)

Green: 0% (0/26)

Yellow: 38% (10/26)

Red: 62% (16/26)

* Flown within 35deg solar angle

D00|O10B (NIS Offset - Riegl)

1	2
---	---

Flown: 0% (0/2)

Green: 0% (0/2)

Yellow: 0% (0/2)

Red: 0% (0/2)

* Flown within 35deg solar angle

D00|R10C (Table Mountain Radiometric Calibration - Riegl)

1	2	3	4	5
---	---	---	---	---

Flown: 0% (0/5)

Green: 0% (0/5)

Yellow: 0% (0/5)

Red: 0% (0/5)

* Flown within 35deg solar angle

D00|R10D (Boulder Airport Radiometric Calibration)

1	2	3	4	5
---	---	---	---	---

Flown: 100% (5/5)

Green: 100% (5/5)

Yellow: 0% (0/5)

Red: 0% (0/5)

* Flown within 35deg solar angle

D00|V10C (Boulder City South Nominal Science Flight)

1	2	3	4	5	6	7	8	9	10	11	12	13	14	15	16	17	18	19	20	
21	22	23	24	25	26	27	28	29												

Flown: 17% (5/29)

Green: 0% (0/29)

Yellow: 0% (0/29)

Red: 14% (4/29)

* Flown within 35deg solar angle

D00|W10C (Wiggle Timing Test - Riegl)

1 2

Flown: 100% (2/2)

Green: 100% (2/2)

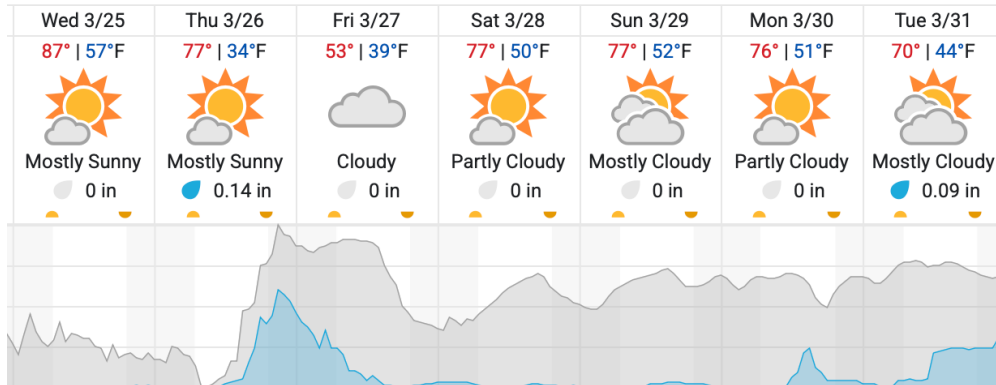
Yellow: 0% (0/2)

Red: 0% (0/2)

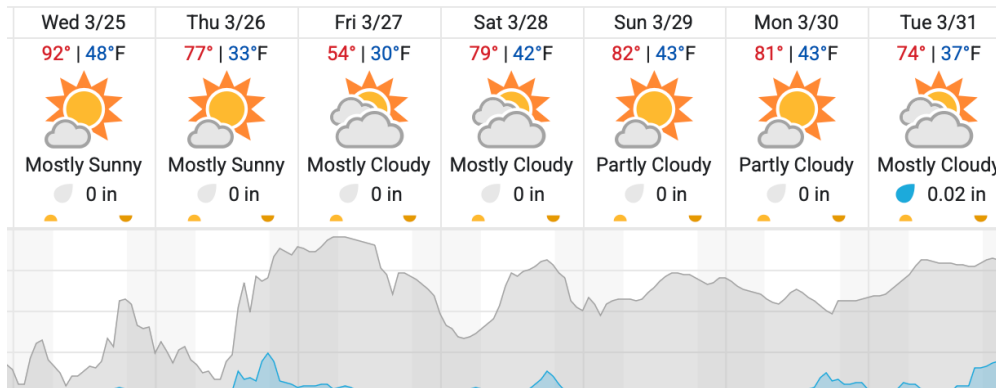
* Flown within 35deg solar angle

Weather Forecast

Boulder, CO (KBDU)



Greeley, CO (B10E)



Cloud Cover (%) Chance of Precip. (%)

source: wunderground.com

Flight Collection Plan for 25 March 2026

Flyority 1

Collection Area: Boresight Calibration – Greeley, CO

Flight Plan Name: D10_B10E_Boresight_1600m_Q780 (RiAcquire name: D10_B10E_Boresight_Apx_VQ780)

On-station Time: 15:50 UTC / 09:50 L

Additional Considerations: No recent snowfall, clear roofs required.

Flyority 2

Collection Area: NIS Offset Flight

Flight Plan Name: D10_O10B_NIS_Offset_v4_Q780

On-station Time: 1620 UTC / 1020 L

Crew: Mitch (Lidar), Alyssa (NIS), John (Ground)