



Payload 2 Daily Flight Report

Date: 2026-06-03
Flight Campaign ID: P2C1
Airport, FBO ID, City: Asheville Regional Airport (KAVL) - Fletcher, NC
Aircraft: N821AR

Domain: 07 (Appalachians & Cumberland Plateau)
Sites Flown: GRSM_P1 (Great Smoky Mountains National Park Priority 1)
Days left in Domain: 30

Report Author: Cameron
Lidar Operators: Cameron **Flight Hours:** 04:09
Spectrometer Operators: Mitch **Hours until maintenance:** 33.87
Pilots: Justin, Skylar **GPS Instruments:** C-NCHE, NPS-GRSM

Summary

Heavy fog over Asheville this morning burned off shortly after solar angle. Initially clear skies over Great Smoky Mountains National Park allowed for the collection of 14 lines in nominal (green) conditions and another 11 lines in (yellow) conditions.

Concerns

- A GRSM KML issues was quickly resolved by the flight planning team! Thanks John M!

Comments

- Mike departed today.

Daily Coverage

Estimated Cloud Cover Key

Green:	Yellow:	Red:
0-10%	11-50%	>50%

Solar Angle Less Than 40 degrees: (*)

D07|GRSM_P1

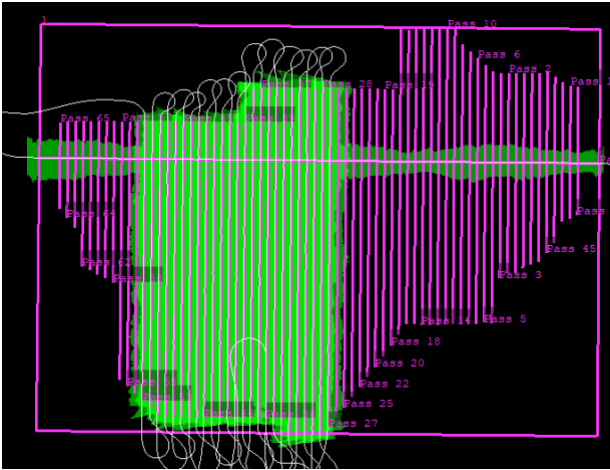
Line #	33	34	35	36	37	38	39	40	41	42	43	44	45	46	47	48	49	50	51	52	
Lidar	✓	✓	✓	✓	✓	✓	✓	✓	✓	✓	✓	✓	✓	✓	✓	✓	✓	✓	✓	✓	✓
Spectrometer	✓	✓	✓	✓	✓	✓	✓	✓	✓	✓	✓	✓	✓	✓	✓	✓	✓	✓	✓	✓	✓
Camera	✓	✓	✓	✓	✓	✓	✓	✓	✓	✓	✓	✓	✓	✓	✓	✓	✓	✓	✓	✓	✓
Cloud Cover																					

Line #	53	54	55	56	57
Lidar	✓	✓	✓	✓	✓
Spectrometer	✓	✓	✓	✓	✓
Camera	✓	✓	✓	✓	✓
Cloud Cover					

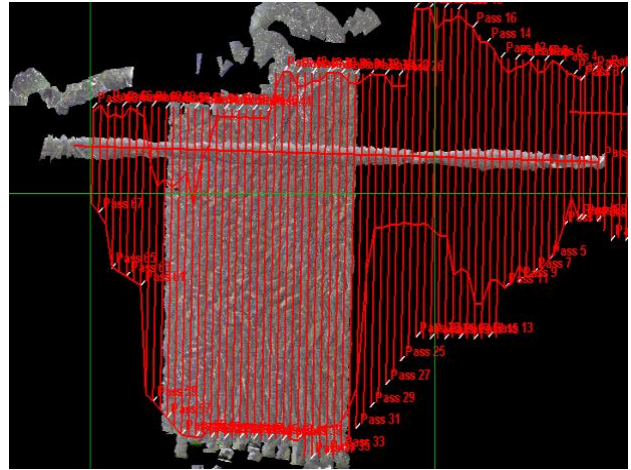
Total number of lines flown: 25

Flight Screenshots

Lidar



NIS



Pictures

Flying over GRSM this morning!



Cumulative Domain Coverage

D07|GRSM_P1 (Great Smoky Mountains National Park Priority 1)

1	2	3	4	5	6	7	8	9	10	11	12	13	14	15	16	17	18	19	20
21	22	23	24	25	26	27	28	29	30	31	32	33	34	35	36	37	38	39	40
41	42	43	44	45	46	47	48	49	50	51	52	53	54	55	56	57	58	59	60
61	62	63	64	65	66	67	68	69											

Flown: 38% (26/69)

Green: 20% (14/69)

Yellow: 17% (12/69)

Red: 0% (0/69)

* Flown within 35deg solar angle

D07|GRSM_P2 (Great Smoky Mountains National Park Priority 2)

70	71	72	73	74	75	76	77	78	79	80	81	82	83	84	85	86	87	88	89
----	----	----	----	----	----	----	----	----	----	----	----	----	----	----	----	----	----	----	----

Flown: 0% (0/20)

Green: 0% (0/20)

Yellow: 0% (0/20)

Red: 0% (0/20)

* Flown within 35deg solar angle

D07|MLBS (Mountain Lake Biological Station)

1	2	3	4	5	6	7	8	9	10	11	12	13	14	15	16	17	18	19	20
21	22	23	24	25	26	27	28	29	30	31	32	33	34						

Flown: 0% (0/34)

Green: 0% (0/34)

Yellow: 0% (0/34)

Red: 0% (0/34)

* Flown within 35deg solar angle

D07|ORNL (Oak Ridge National Laboratory)

1	2	3	4	5	6	7	8	9	10	11	12	13	14	15	16	17	18	19	20
21	22	23	24	25	26	27	28	29	30	31	32	33	34	35	36	37	38	39	40
41	42	43	44	45	46	47	48	49	50	51	52	53	54	55	56	57	58	59	60
61																			

Flown: 33% (20/61)

Green: 0% (0/61)

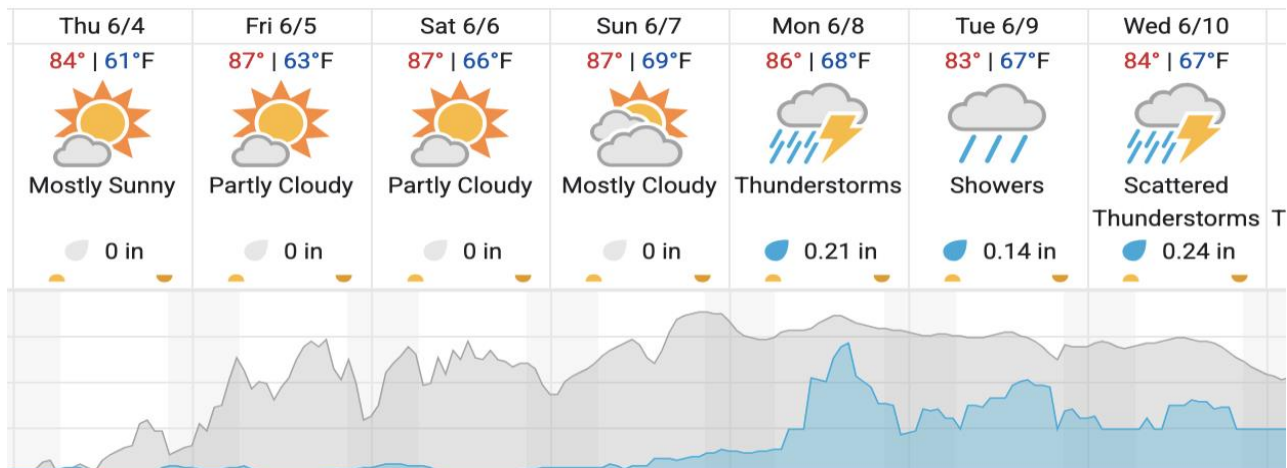
Yellow: 0% (0/61)

Red: 33% (20/61)

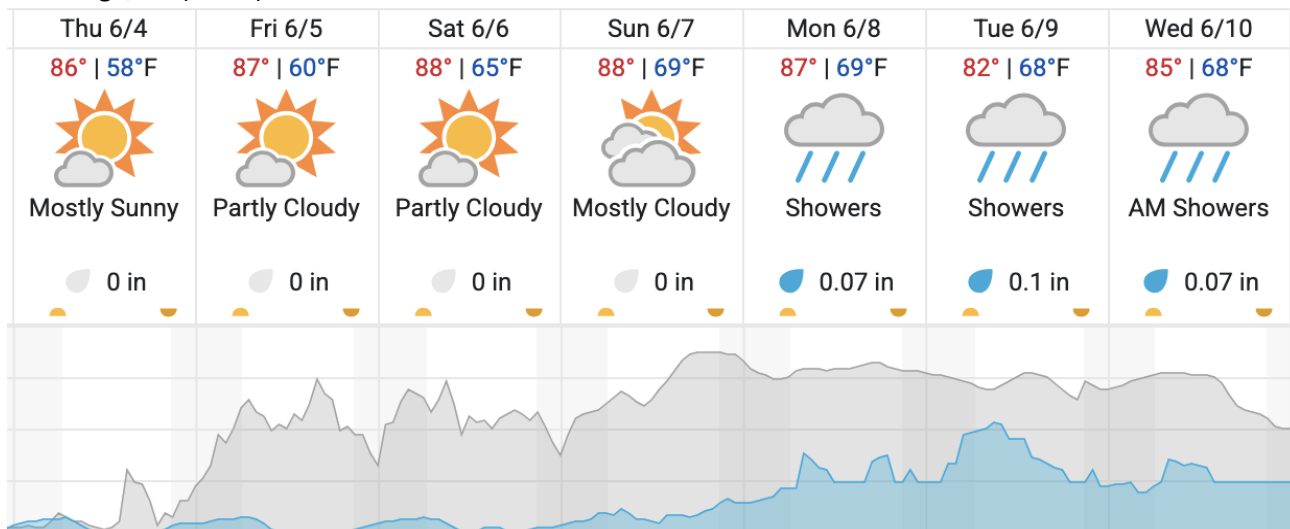
* Flown within 35deg solar angle

Weather Forecast

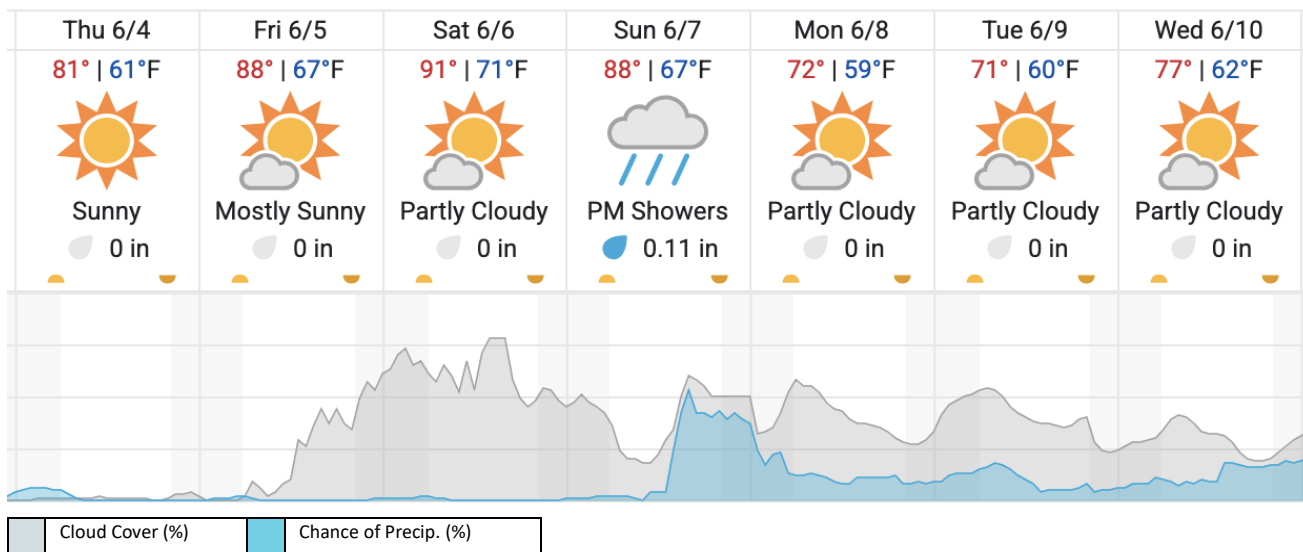
Gatlinburg, TN (GRSM)



Oak Ridge, TN (ORNL)



Pembroke, VA (MLBS)



source: wunderground.com

Flight Collection Plan for June 4, 2026

Flyority 1 *Lines 1-32, 58-58 (47 – 57 if green)*

Collection Area: Great Smoky Mountains National Park (GRSM) – Priority 1 Flight Box

Flight Plan Name: D07_D07_GRSM_R1_P1_v6_VarAlt_VQ780

40° On-station Time: 14:00 UTC /10:00L

Flyority 2 *(lines 38-56, only if green)*

Collection Area: Oak Ridge National Laboratory (ORNL)

Flight Plan Name: D07_ORNL_C1_P1_v11_west_VQ780 (lines 1-37, 60) / D07_ORNL_C1_P1_v11_east_VQ780

40° On-station Time: 14:00 UTC / 10:00L

Flyority 3 – *Not to attempt before 6/6*

Collection Area: Mountain Lake Biological Station (MLBS)

Flight Plan Name: D07_MLBS_R1_P1_v8_VQ780

40° On-station Time: 13:50 UTC /09:50L

Flyority 4

Collection Area: Great Smoky Mountains National Park (GRSM) – Priority 2 Flight Box

Flight Plan Name: D07_ D07_GRSM_R1_P2_v6_VarAlt_VQ780

40° On-station Time: 14:00 UTC /10:00L

Crew: Mitch (Lidar), Cameron (NIS)