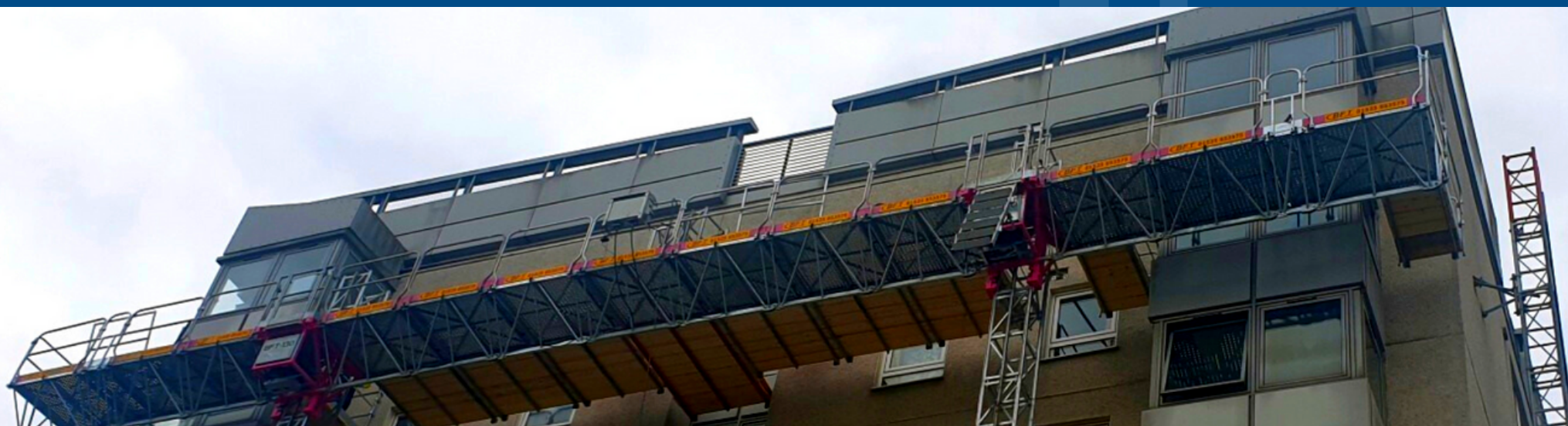


10 Things You Should Consider Before Choosing Vertical Access



It's easy to use scaffolding as your default access solution. But there are now better alternatives depending on the type of project you're working on. The access solution should be tailored to the project.

For instance, the answer to these questions may lead to different solutions:

- How will residents be impacted?
- What is the project timeline?
- Which tradespeople will be involved and how does the access solution impact them?

Here are 10 key considerations that will help you choose the right vertical access solution for your project.

1 How will occupants be effected by your access solution?

If you are doing a recladding project or other remedial work, then it is likely that there will be occupants in the building.

If this is the case, how will they be impacted by your choice of access solution?

Scaffolding requires lengthy construction times and monarflex wraps which block light and have a negative impact on the well-being of occupants. Mast climbers on the other hand can be assembled and disassembled in days and don't require wraps.

With recladding projects, and other remedial work, the traditional option is often not the best.



2 Time Spent On Site

The longer your workers are on site, the longer your vertical access takes to assemble and the longer your operatives are on-site, the smaller your margins will be.

With costs increasing across all areas of construction, it's more important than ever to find ways to reduce time on site and help you complete more projects and increase your profitability.



3 Consider Using A Hybrid Solution

When it comes to vertical access, you're probably thinking of a binary choice. Scaffolding or mast climbers.

A hybrid solution is typically the best and the most productive for your project.

Scaffolding is better for ground floor protection. For the vertical access itself, a mast climber can be used from the first floor and above.

With this solution, your project is getting the best of both vertical access worlds.

4

Due-dilligence

Choosing the right solution can take a bit of research. Research is time consuming. However, the result is worth it.

Choosing the right access solution for the job by comparing the strengths and weaknesses and choosing the best solution regardless of historical decisions means you are setting the right precedent of innovation and excellence.

Too many organisations settle for the mantra of "it's how we've always done it." This is a recipe for business failure.



5

Health & Safety For Workers

Working at height is the single most dangerous activity on a construction site.

In fact, 47% of all accidents in UK construction last year were falls from height.

Finding vertical access that helps minimise these incidents should be at the top of your list.



6

On-Site Security

When a building is enclosed with scaffolding, it becomes a sitting duck for criminals.

In the wrong hands, scaffolding becomes nothing more than a climbing frame for criminals to access.

Alternative means of vertical access, such as mast climbers, make criminal access far more difficult.

Why let your vertical access potentially jeopardise the whole project or increase the risk for residents in an occupied building?

7

The Type of Work You're Doing

Trades have different requirements for vertical access. What works for one, might not for the other.

Understanding the work that needs to be completed is a crucial factor in deciding the vertical access for your high rise.

Have you got multiple trades that need access at the same time? Is your project more staggered and therefore suited to individual trades working independently?

Be it Brickwork or cladding, the right MCWP provider will be able to produce a bespoke plan that accommodates the specific needs of the trades. Whether it is corner wraps for the brickies or hitting particular tie locations for the cladding panels the MCWP solution is not a one size fits all. A true consultative approach with someone who understands your program requirements is crucial.

8 Project Logistics

Weeks (if not months) can be removed from your program time when using Mastclimbers over scaffolding. Also, with fewer deliveries to site and less labour movements your logistic plan is much clearer with Mastclimbers. For the really tall projects Mastclimbers can also be double stacked so any concerns about multiple trades on the same façade can be easily remedied as well. Just be clear about your objectives when starting out.



9 Sustainability

Choices in vertical access can contribute to meeting sustainability goals.

Some forms are delivered to site in far fewer lorry loads than others. Marginal gains here add up.

Finding suppliers with FORS certified fleets reinforce the commitment of your organisation to sustainability goals.

Knowing suppliers are doing everything to support the environment and reduce carbon emissions is more important than ever.

10 Cost

With prices increasing across the board, it's understandable that cost is an important factor in your choice of vertical access.

While it can make a huge difference to your bottom line, it's perhaps needs to be considered in context.

Costs do vary in terms of the vertical apparatus itself, but the biggest difference comes in the time spent on site. The longer it takes to erect the vertical access, the more expensive it will cost the overall project, especially if operatives are on day rates.

Thinking about the cost to the overall project is far more important than measuring like-for-like the cost of the vertical access alone.



Vertical Access Considerations

The question you need to ask yourself is whether you want the cheapest solution or the best solution. It's impossible to have both.

When we refer to cheapest, we mean cost at the point of hire. It's already been noted that there are differences in cost between scaffolding and mast climbers when you consider them over the lifespan of the project.

In terms of the project itself, you need to see vertical access as essential as any other part of the project. Can it reduce timelines? Can it improve working conditions? How does it impact those inside the building?

Answering these, and consider the 10-points above, you'll quickly realise the best vertical access for you.



080 178 9772



mcwp@bftmastclimbing.com