

The new SIUDI-11 interface

Smart Dmx Interface (USB & Ethernet)



Sleek design in plastic or metal

The SIUDI-11 plastic case comes in 2 colors, Light Gray Stardust and Anthracite Dark Gray. You can combine both colors to create a new look. The SIUDI-11 is also available with metal housing for LIVE applications. Easily connect to the new SIUDI-11 using your computer, tablet, or smartphone.

2048 channels (4 DMX universes) Built-In

Maximize your DMX channels with the ability to use up to 4 Universes of DMX channels both connected or in Stand Alone Mode. The 4 standard 3pin XLRs are easy to customize. They can be changed to a 5pin, male or female connector as requested (lead time may vary for pin customization). Each universe can be set as DMX in or out, and all are RDM ready.

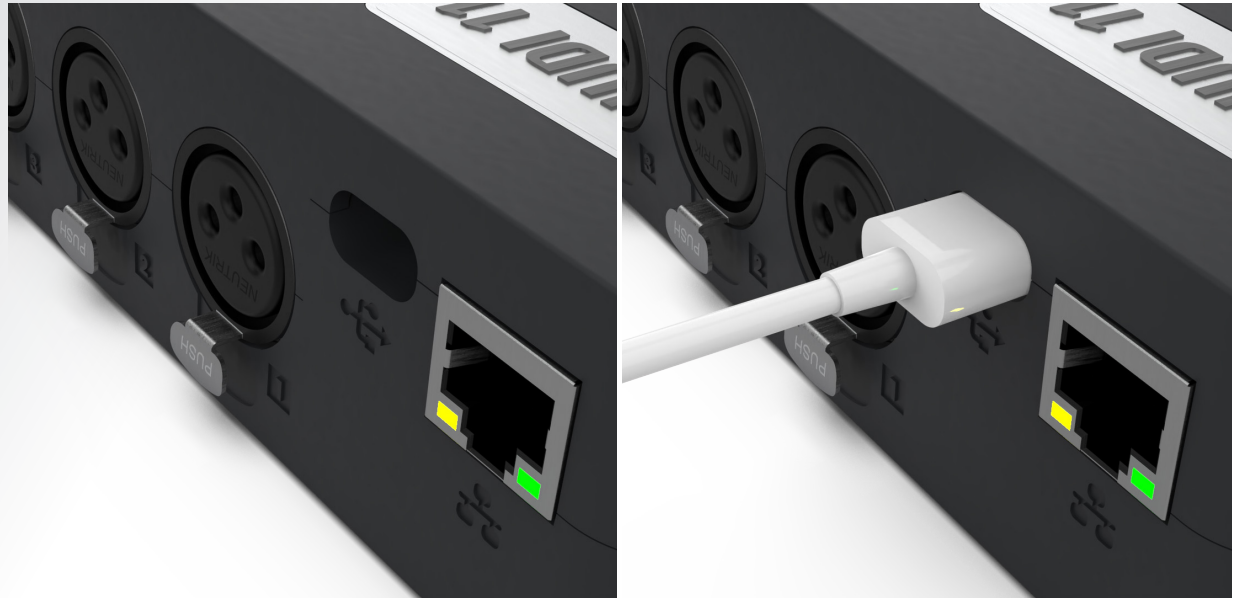


Intuitive backlit keyboard with 10 presets

Each of the 13 buttons on the SIUDI-11 have been placed for maximum ease of use. The ABC button allows you to cycle between each of the 5 zones. The arrow buttons allow you to cycle through your scenes (99 total). The first 10 scenes of each zone are backlit for a user friendly experience.

Ingenious USB-C Protection

Our new housing cases provide ultimate protection for our USB cable connections. Our new housing design recesses the cable inside the plastic housing to protect the cable from ripping. The plastic housing case comes with a USB C cable connection and the metal housing case comes with a USB B cable connection.

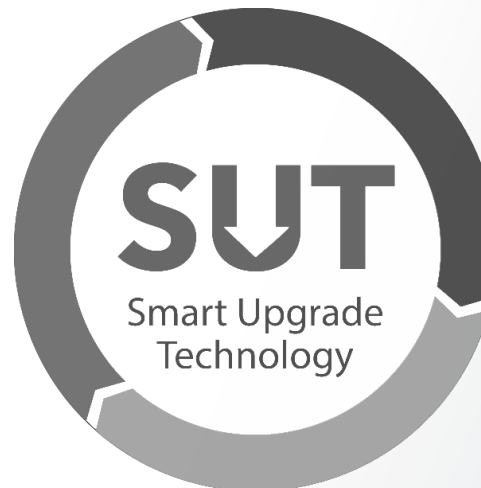
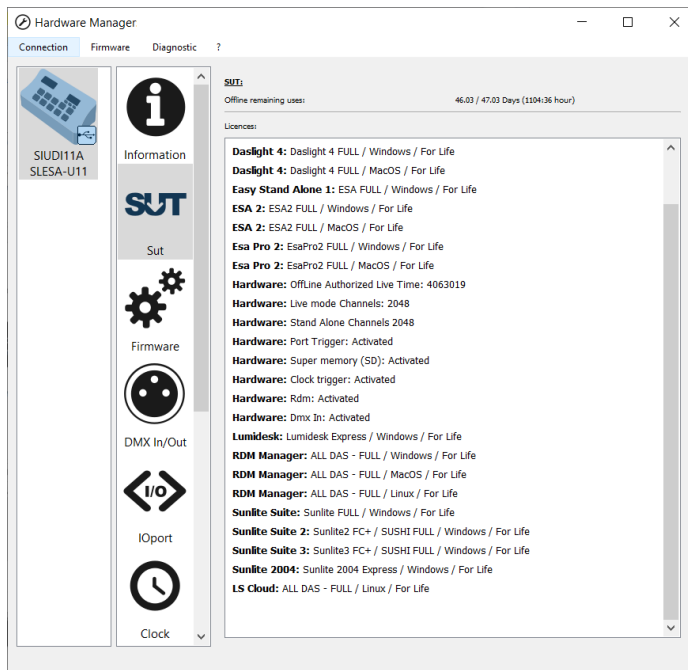
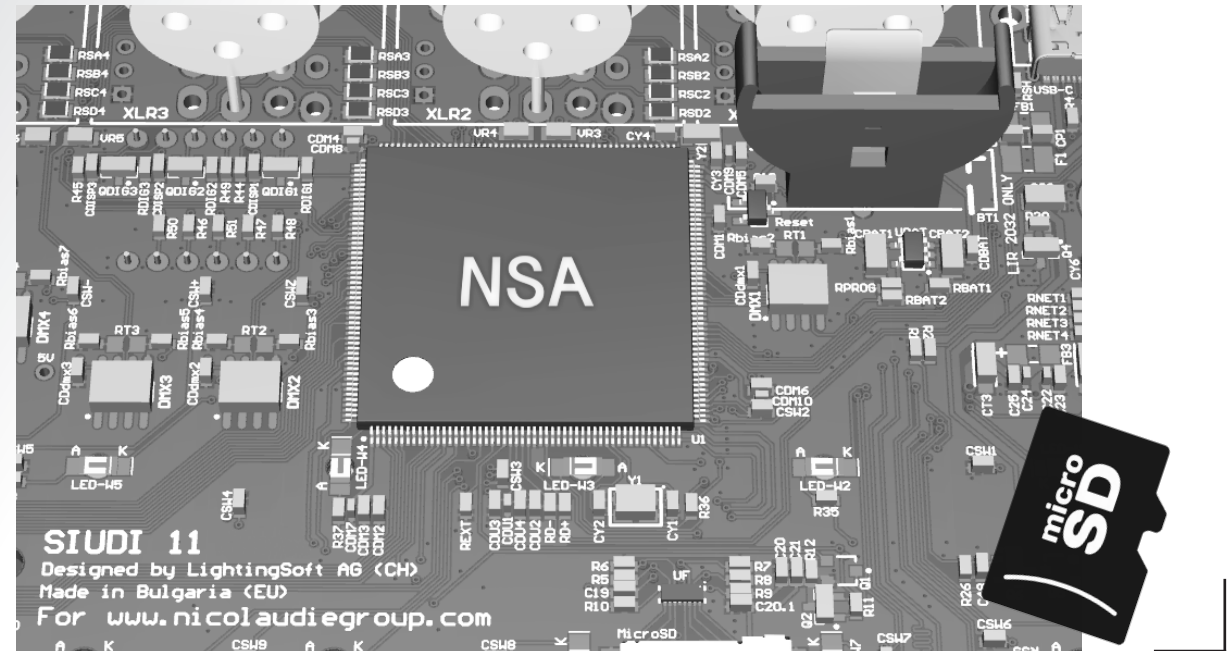


New Powerful Triggering Option

The SIUDI-11 takes advantage of the new TCA triggering features. With the new ESA Pro2 software you can create powerful combinations using calendar, contact closures (16 ports) and TCP/IP. Ultimate protection is provided with a removable plastic cover for the contact closures.

Multi-zone stand alone firmware (NSA) with micro sd card

With an engine more efficient and new innovative features the newest Nicolaudie Stand Alone (NSA) firmware offers you a multi zone control and the power to handle any lighting situation. The hardware includes an SD card to give you maximum storage.

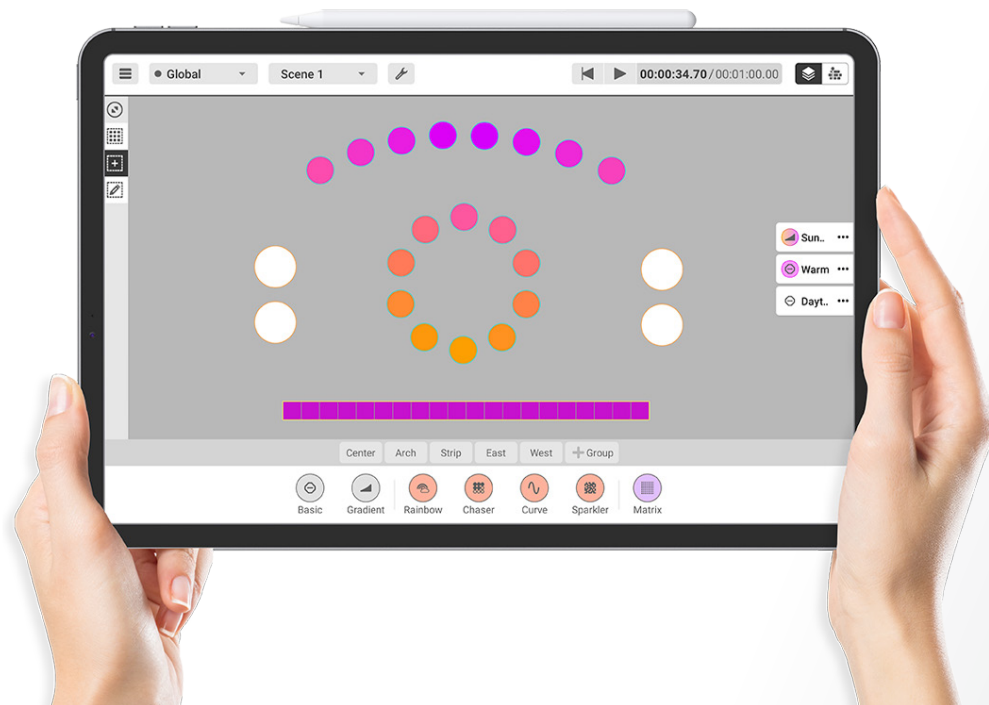
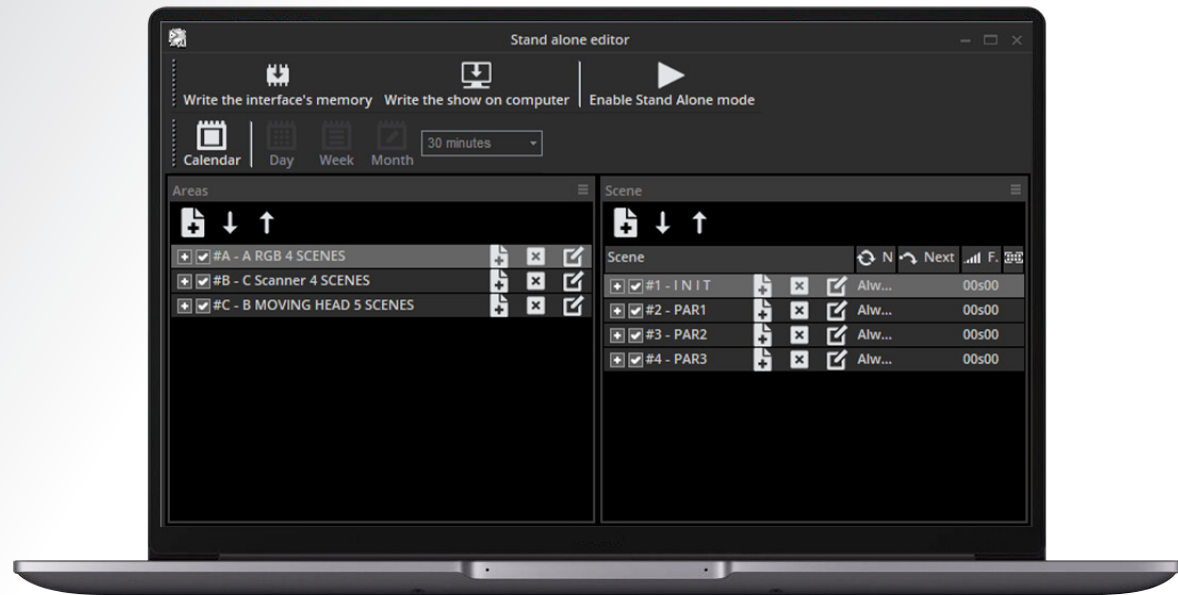


Smart Upgrade Technology (SUT) with Expandable License

The SIUDI-11 takes advantage of the SUT upgrade abilities. You can purchase hardware options like DMX channels, or upgrade to our latest software. We also offer a 30 day free software trial. This approach allows you to tailor the controller to your needs.

Ideal Backup for Live Applications

In case of computer malfunction the very effective Stand Alone Mode for «LIVE» applications will allow you to continue your show without missing a beat. The multi zone feature will allow you to dedicate each page to a specific type of fixture and have a scene running per page.

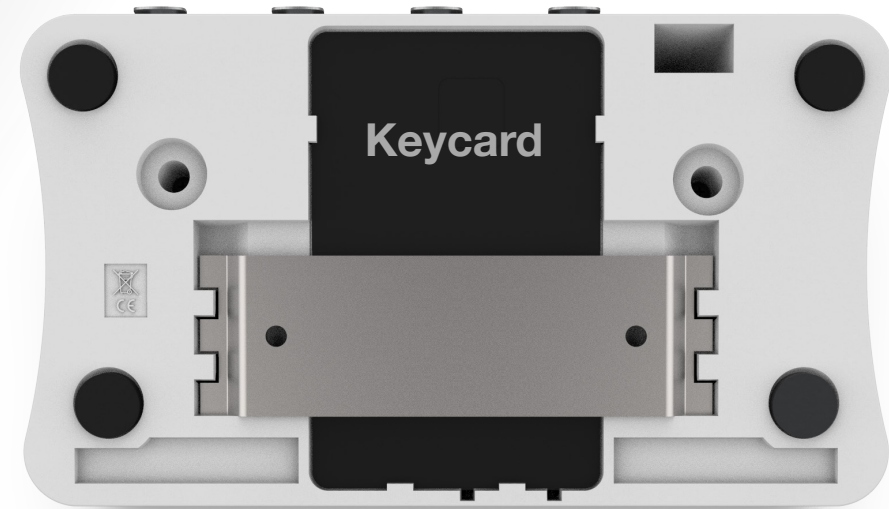
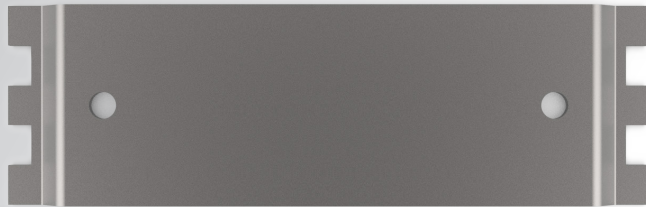


Next Generation SLESA

Nicolaudie Architectural will slowly be replacing the «blue» SLESA boxes. The next generation of Nicolaudie's SLESA interfaces will be using the new SIUDI-11 technology, that will include new features in addition to a sleek new design.

Metal Bracket and Key Card Storage

You can now support your SUIDI-11 with a sliding metal bracket that can be mounted to a wall or under a desk. The new SUIDI-11 housing case provides storage space specifically designed to hold your license key card for loss prevention.



Quick Assembly and Repair

Due to the new All-In-One PCB, the interface can be assembled in 30 seconds. Because of the nature of its speedy build and break down the interface can be quickly serviced and sent back to its owner.

Metal Casing 11B with Type B USB

The new 11B PCB comes with a vertical screen, and 3 buttons. This interface is designed to focus on «LIVE» applications. The 11B will be featured in a metal housing case that has a compact sleek design dedicated for touring live, with a sturdy Type B USB cable.

