

# DVC4 GOLD



Daslight Virtual Controller DVC4 Gold



## Overview

The DVC4 Gold DMX controller can be used in either Live or Stand Alone mode to control a wide variety of DMX fixtures from RGB/RGBW to more advanced moving heads and specialist fixtures and stage effects.

The controller comes with a variety of features including 1024 DMX channels\*, clock/calendar and DMX input port. Scenes in Live mode can be triggered by MIDI/DMX inputs and Keyboard/Mouse control through Daslight4 software. You can also use the Easy Remote app on iPhone/iPad/Android. Scenes in Stand Alone mode are triggered via push buttons or dry contact ports.

[www.daslight.com/hardware.htm](http://www.daslight.com/hardware.htm)

## Key Features

- USB connection for programming/control
- 2 DMX512 universes in Live mode (computer) \*
- 1 DMX512 universes in Stand Alone mode \*
- 8 dry contact trigger ports via HE10 connector
- DMX input port via XLR3 male connector
- Stand Alone mode with 1 zone/page and 100 scenes
- Clock and calendar with Sunrise/Sunset triggering
- Buttons for changing scenes and dimmer
- OEM customization
- Windows/Mac software to set dynamic colors/effects
- iPhone/iPad/Android remote and programming apps
- Light Rider licence for Apple iPad / Android tablets

\* 2nd universe enabled by configureing XLR3 male connector to an output through software preferences.

## Technical Data

<b>Input Power</b>	5-5.5V DC 0.6A
<b>Output Protocol</b>	DMX512
<b>Programmability</b>	PC, Mac
<b>Available Colors</b>	Blue, Orange, Gray, Green, Marine, White, Red
<b>Connections</b>	Mini USB, XLR3 male, XHL3 female, 2x HE10, battery
<b>Memory</b>	128KB, In-built flash
<b>Environment</b>	IP20. 0°C - 50°C
<b>Buttons</b>	2 buttons to change scene + 1 dimmer button
<b>Dimensions</b>	79x92x43mm 120g Complete Package 140x135x50mm 340g
<b>OS Requirements</b>	Mac OS X 10.10 or higher Windows 7/8/10
<b>Standards</b>	EC, EMC, ROHS, ETL, UL

## Optional Accessories

**POWER1\_EU/UK/US** 5V ACDC power supply with EU/UK/US plug

# CONNECTIVITY

## Live Mode (computer control)

**DMX** (Up to 2 universes, 2nd universe configurable as DMX IN/OUT with certain products)



Mini USB  
USB



## Stand Alone Mode

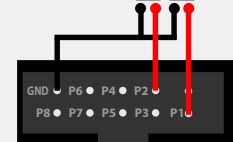
**DMX** (Up to 1 universe)



AC/DC  
ADAPTOR  
5V-5.5V  
POWER1

## PORTS SETUP

Connect any of the port pins with the ground pin to trigger a volt free dry contact port. Ports can be combined in binary to have up to 255 triggers. ... P2 P1 ...



REAR

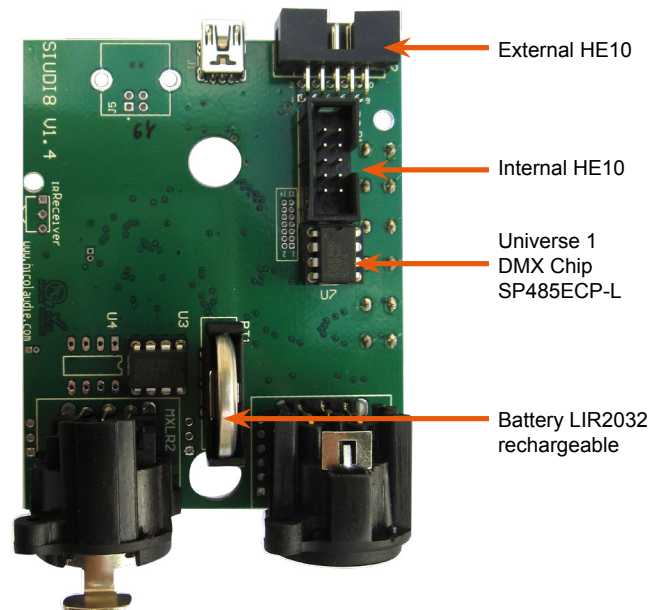


FRONT



Universe #2  
1 DMX2 ground  
2 DMX2 data-  
3 DMX2 data+

Universe #1  
1 DMX2 ground  
2 DMX2 data-  
3 DMX2 data+



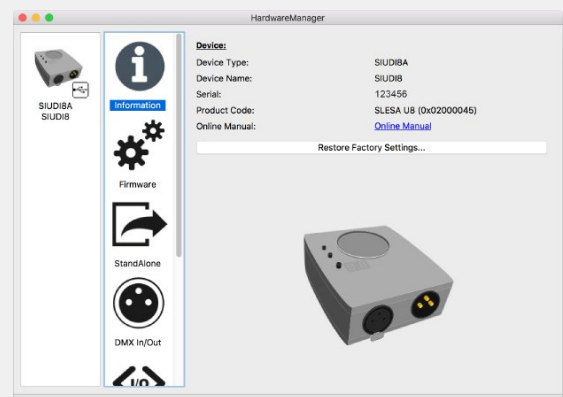
## Software

### Daslight Software

- Daslight 4 software (PC & Mac)
- DVC3 software (PC)
- For programming software go to : [www.daslight.com/download.htm](http://www.daslight.com/download.htm)

### Hardware Manager (See opposite)

Configuration and testing software. Use Hardware Manager to check device information, update firmware, change settings, update date/time, test DMX input/output etc.



# Troubleshooting

## '88' is showing on the display

The controller is in bootloader mode. This is a special 'startup mode' which is run before the main firmware loads.

- Try re-writing the firmware with the latest hardware manager

## The controller is not detected by the computer

- Be sure that the latest software version is installed from the website.
- Connect by USB and open the Hardware Manager (found in the software directory). If it is detected here, try to update the firmware. If it is not detected, try the method below.
- Force a firmware update using Bootloader Mode
  1. Power off your interface
  2. Start HardwareManager on your computer
  3. Connect the pins 2,3,4 and GND and then plug in the USB cable. An easy way to connect the pins is by using aluminium foil.

You will know your device is in Bootloader mode when it appears in HardwareManager with the Device Type ending '\_BL'.

4. Update the firmware on the firmware screen.
- Try a different computer
  - Try a different USB cable

## Fixtures / lights not responding

- Check the DMX +, - and GND are connected correctly
- Check that the driver or lighting fixture is in DMX mode
- Be sure that the DMX address has been set correctly
- Check there are no more than 32 devices in the chain
- Check that the red DMX LED is flickering on the PCB
- Connect with the computer and open HardwareManager (found in the software directory). Open the DMX Input/Output tab and move the faders. If your fixtures respond here, it is possibly a problem with the show file
- We strongly recommend the use of a DMX Tester with our interfaces with any problem solving
- No DMX output? There could be a faulty DMX chip. The SIUDI-8A has 2 x DMX chips which are user-replacable (see pg2). Try swapping the chips over to test if one is faulty. Use a flat head screw driver to pry them gently from the socket.