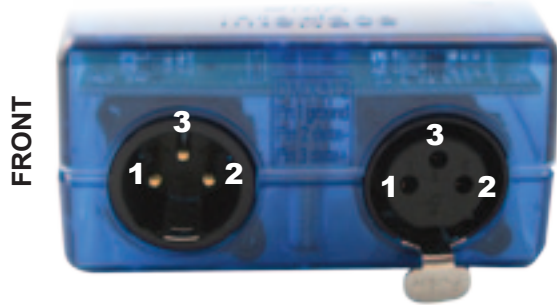
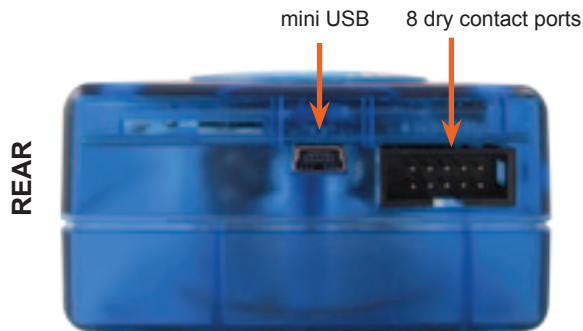


## DMX Live control and Stand Alone controller

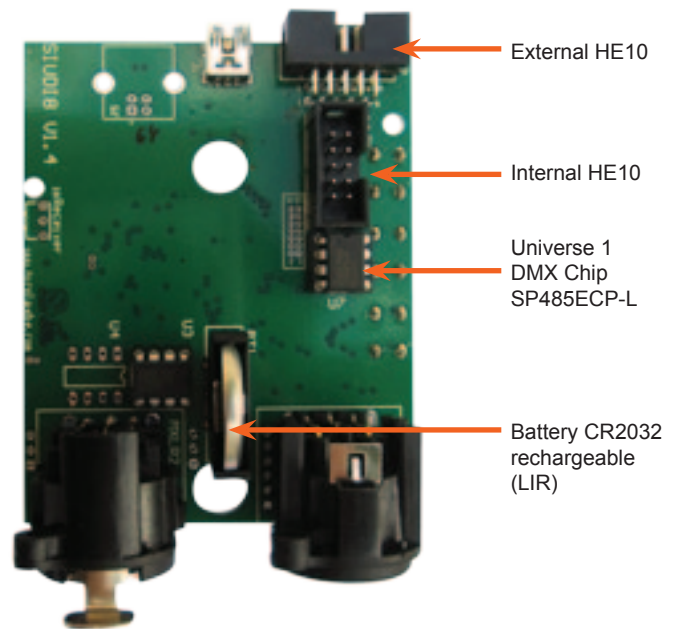
- USB connection
- Up to 2 DMX512 universes
- 128k flash memory for storing stand alone programs
- 8 dry contact trigger ports via HE10 connector
- clock & calendar triggering function
- stand alone mode with 1 zone and 255 scenes



Universe #2\*  
1 DMX2 ground  
2 DMX2 data-  
3 DMX2 data+

Universe #1  
1 DMX1 ground  
2 DMX1 data-  
3 DMX1 data+

\*not compatible with SLESA-U8



## SPECIFICATIONS

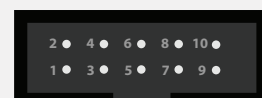
|                       |  |
|-----------------------|--|
| <b>Package</b>        | Interface, cdrom, usb cable  |
| <b>OS Requirement</b> | Mac OSx 10.6/10.7/10.8 - Windows XP/VISTA/SEVEN/8 32/64 bits and USB 2.0 |
| <b>Colors</b>         | Blue, Orange, Gray, Green, Marine, White, Red                            |
| <b>Connections</b>    | XLR3, mini USB, 2 HE10, battery  |
| <b>Power</b>          | Power From 5V to 5.5V DC (AC/DC adapter in option, ref: POWER1_EU)       |
| <b>Certifications</b> | EC, EMC, ROHS, ETL, UL (some are in progress)                            |
| <b>Interface</b>      | 79x92x43 mm 120g   |
| <b>Package</b>        | 140x135x50 mm 340g   |
| <b>Use</b>            | Environement IP20 Temperature 0°C to 50°C                                |
| <b>Buttons</b>        | 2 buttons to change scene (previous/next) + 1 button to change dimmer    |

### External HE10



P1 PORT 1    P6 PORT 6  
P2 PORT 2    P7 PORT 7  
P3 PORT 3    P8 PORT 8  
P4 PORT 4    GND Ground  
P5 PORT 5

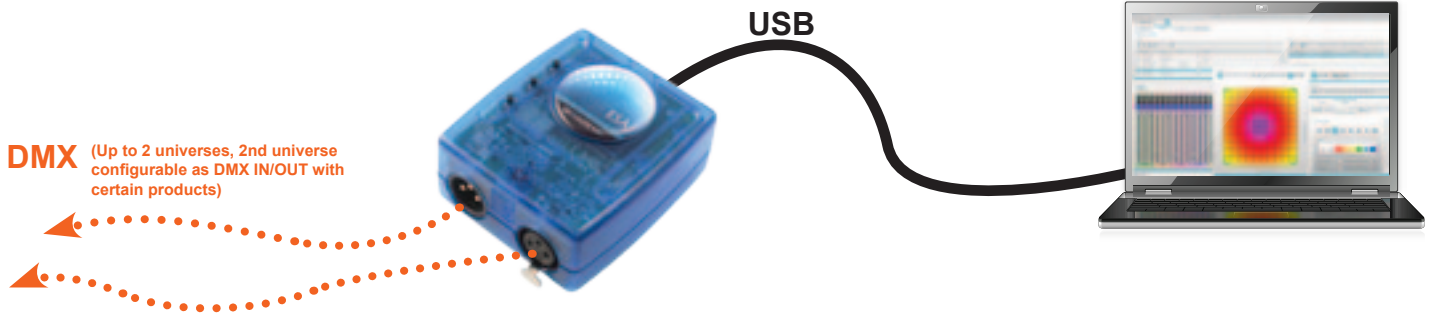
### Internal HE10



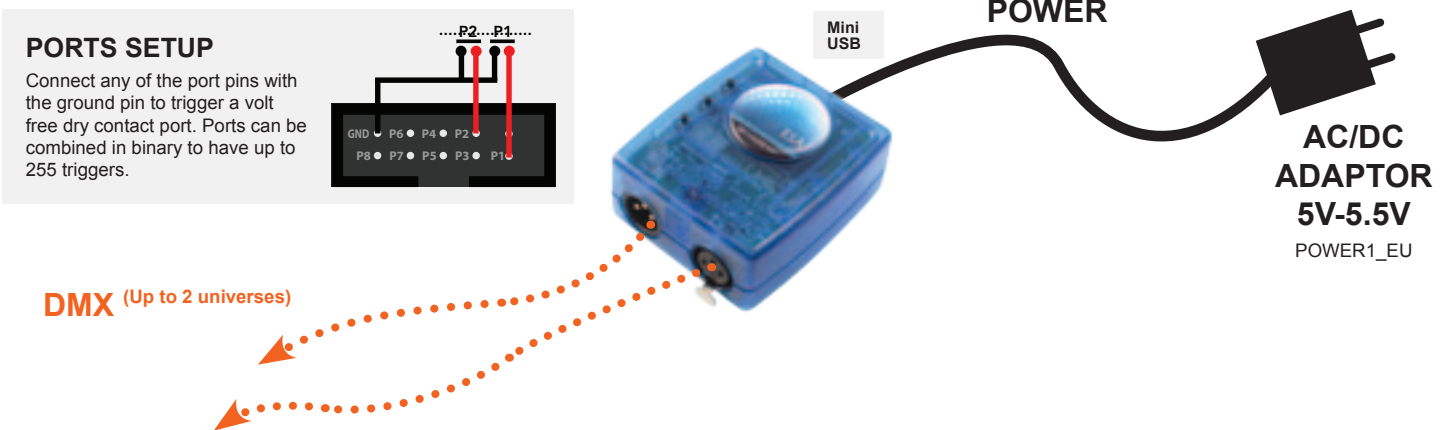
1 Ground    6 NEXT  
2 Dimmer    7 Zone  
3 DMX1+    8 LED DMX  
4 PREVIOUS    9 VUSB  
5 DMX1-    10 LED USB



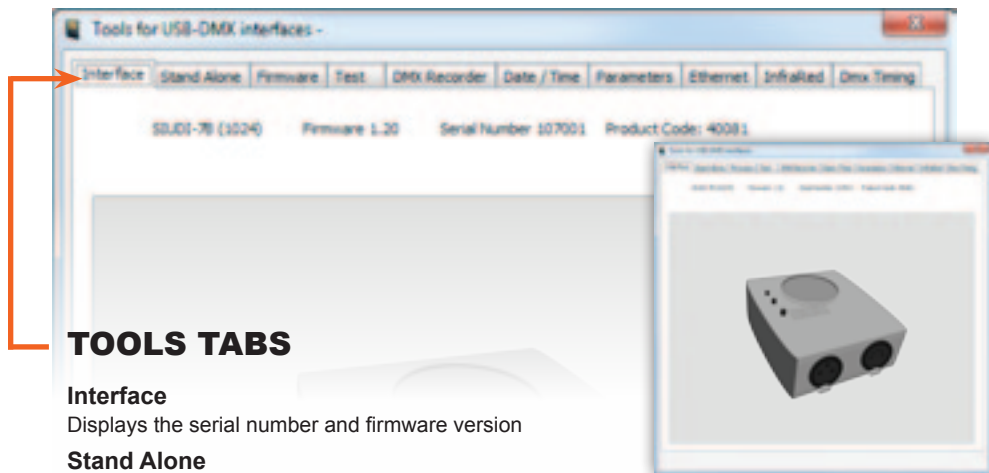
# LIVE USE WITH COMPUTER



# STAND ALONE USE



# SOFTWARE TOOLS.EXE to set parameters



## TOOLS TABS

### Interface

Displays the serial number and firmware version

### Stand Alone

Set the interface to stand alone mode

### Firmware

Write the latest firmware

### Test

Test DMX outputs and ports

### Date / Time

Set date, time, and location coordinates

### Parameters

Adjust special parameters

### Dmx Timing

Adjust DMX output signal

## Nicolaudie software

- Easy Stand Alone software\* (PC)
- ESA2 software\* (PC & Mac)
- SL Suite 2 (PC, works only with SUITE2-EC versions)

\* SLESA-U8 limited to 1 universe