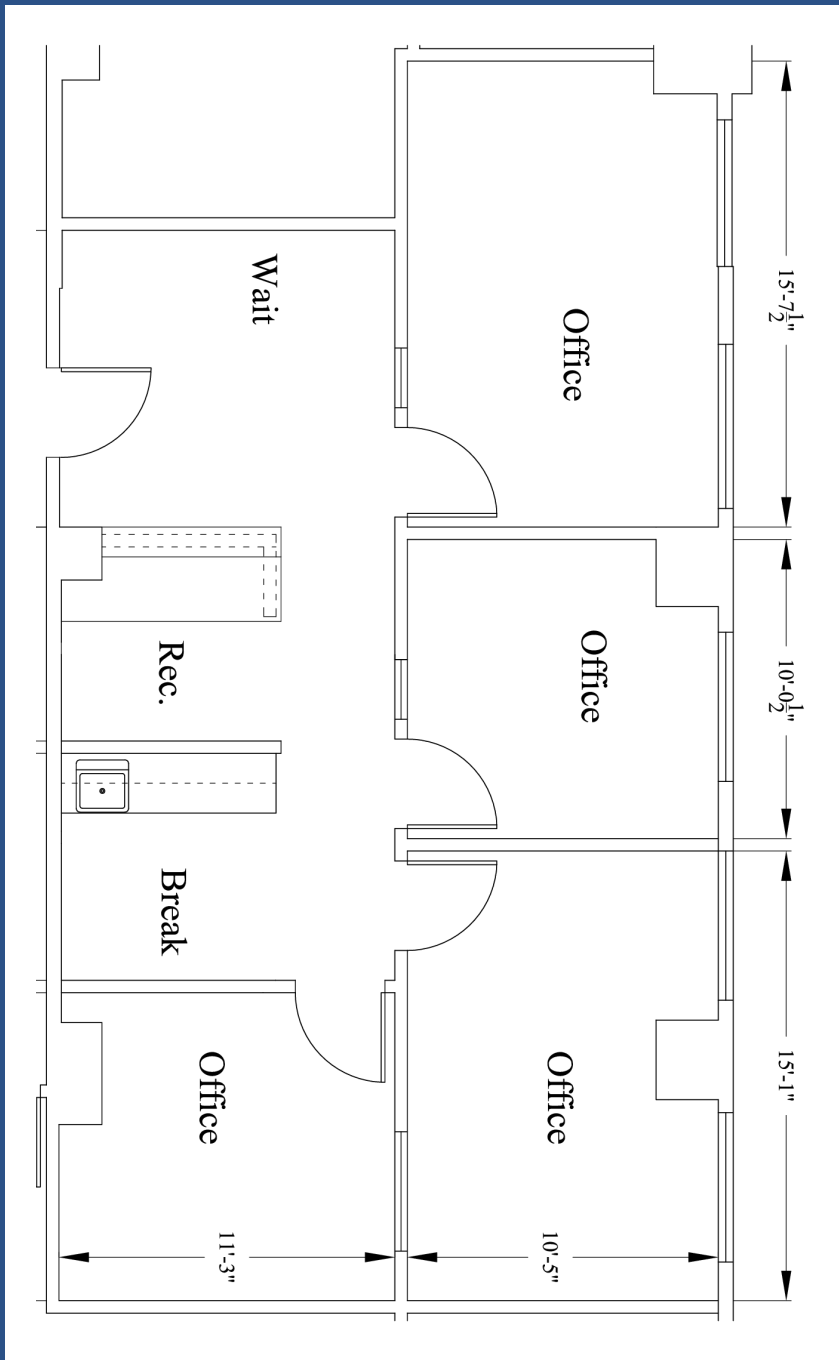


# AVAILABLE NOW

**SUITE 340 • 1020 RSF • \$1445/month**



**Suite 340** includes the following amenities and more:

- Newly Renovated
- Three Offices
- Private Conference Room
- Built-In Reception Area and Waiting Room
- Northside View of the City
- Access to Four Conference Rooms
- On-Site Management Office
- Full-Service: Janitorial, Maintenance & Utilities are all included in lease

If you would like to schedule a private tour of our facilities or have any questions at all about this or any other available suites, please contact Lisa Dowers at **(509) 590-0685** or email [lisa.dowers@paulsencenter.com](mailto:lisa.dowers@paulsencenter.com)



**Paulsen Center Management**

421 W. Riverside Ave. Suite 204 / Spokane, WA 99201  
Call 509.624.6788 or visit us at [www.paulsencenter.com](http://www.paulsencenter.com)