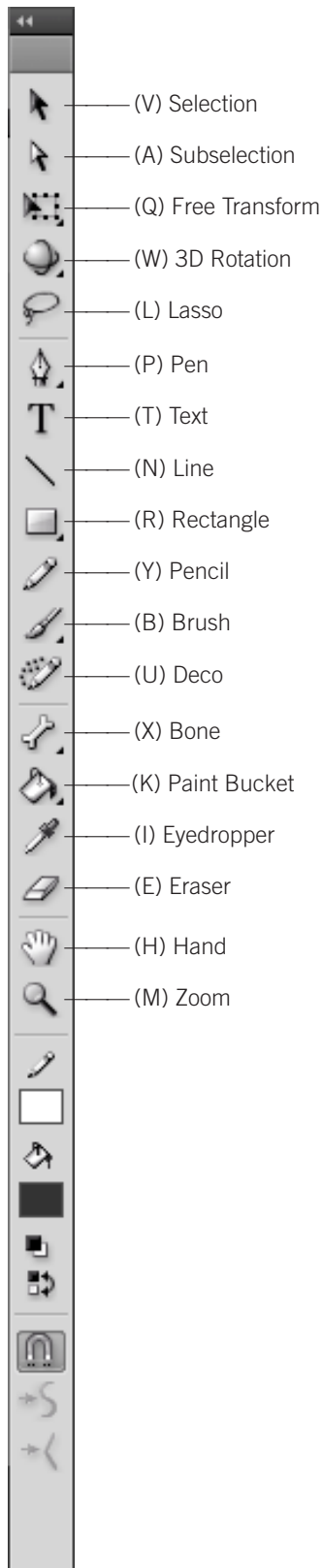




TOOLS



TIMELINE

- Insert FrameF5
- Delete Frame Shift-F5
- Insert Keyframe.....F6
- Clear Keyframe Shift-F6
- Insert Blank Keyframe.....F7
- Play Return
- Rewind Shift-Comma (,)
- Step Forward One Frame Period (.)
- Step Backward One Frame..... Comma (,)

SYMBOLS & SHAPES

- Convert to SymbolF8
- Create New Symbol..... ⌘-F8
- Break Apart ⌘-B
- Group ⌘-G
- Ungroup ⌘-Shift-G
- Bring Forward..... ⌘-Up Arrow
- Bring to Front..... Opt-Shift-Up Arrow
- Send Backward..... ⌘-Down Arrow
- Send to Back Opt-Shift-Down Arrow
- Distribute to Layers ⌘-Shift-D
- Paste in Place..... ⌘-Shift-V
- Add Shape Hint ⌘-Shift-H
- Show Shape Hints..... ⌘-Opt-H

PANELS

- Actions Opt-F9
- Library ⌘-L
- Properties ⌘-F3
- Align ⌘-K
- Transform ⌘-T
- Color..... Shift-F9
- Document Properties ⌘-J
- Hide All Panels F4

MISC.

- Test Movie ⌘-Return
- Bandwidth Profiler (while in Test Movie) ⌘-B
- Simulate Download (while in Test Movie) ⌘-Return
- Publish Shift-F12
- Import to Stage ⌘-R

NOBLE DESKTOP

<!--Exceptional computer graphics training.-->

594 Broadway, Suite 1202, New York, NY 10012
212.226.4149 www.nobledesktop.com