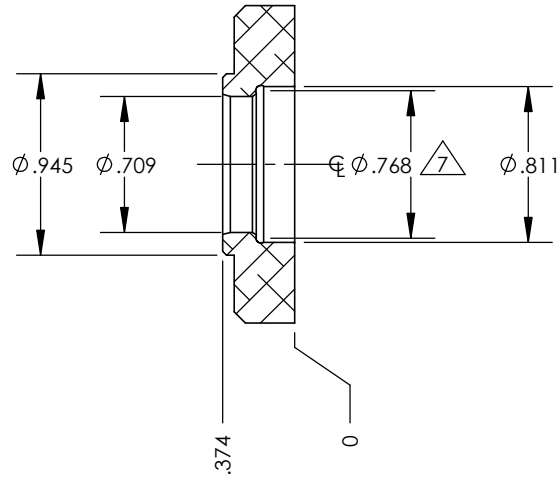
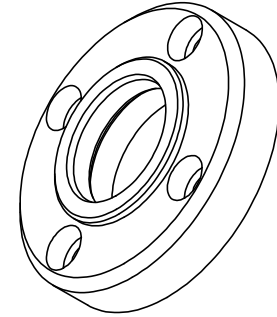


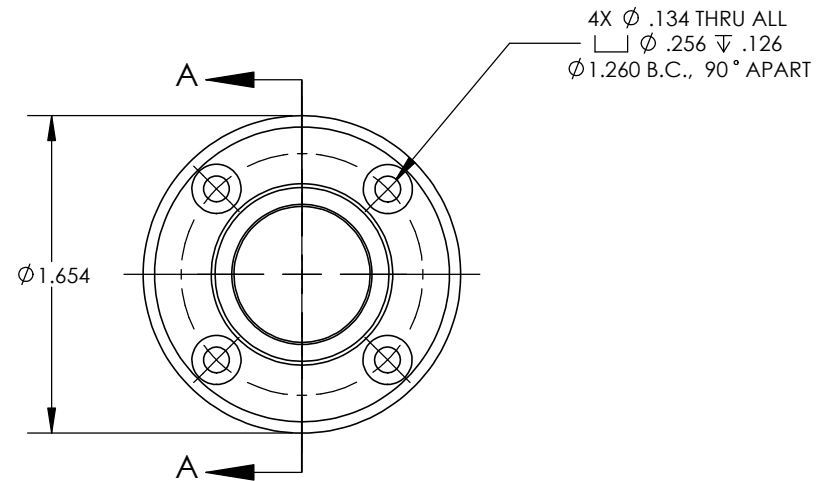
NOTES:

- 1) MATERIAL MUST BE ALUMINUM 6061-T6  
PER QQ-A 225/8, ASTM B-211, QQ-A-200/8,  
QQ-A-250/11, OR ASTM-B209.
- 2) BLACK ANODIZE PER MIL-A-8625 TYPE III,  
CLASS 2. PLATE THICKNESS .0008" TO .0010"
- 3) NO SHARP EDGES ALLOWED
- 4)  $\sqrt{16}$  SF ALL OVER
- 5) FINE SANDBLAST SURFACE BEFORE ANODIZE
- 6) DIMENSIONS APPLY AFTER PLATING

$\triangle 7$  DIAMETER DISTANCE OF THE CENTER  
OF REVOLVING RADIUS R.026



SECTION A-A



**PROPRIETARY AND CONFIDENTIAL**  
THE INFORMATION CONTAINED IN THIS  
DRAWING IS THE SOLE PROPERTY OF  
OAVCO LLC. ANY REPRODUCTION  
IN PART OR AS A WHOLE  
WITHOUT THE WRITTEN PERMISSION OF  
OAVCO LLC IS PROHIBITED.

		UNLESS OTHERWISE SPECIFIED:		NAME	DATE				
		DIMENSIONS ARE IN INCHES TOLERANCES: FRACTIONAL ± ANGULAR: ± 1/4° TWO PLACE DECIMAL ±.01 THREE PLACE DECIMAL ±.005		DRAWN	JT			12/18/13	
		INTERPRET GEOMETRIC TOLERANCING PER:		CHECKED			TITLE: <b>20X32 BC RETAINER PLATE</b>		
		MATERIAL		ENG APPR.					
		FINISH		MFG APPR.					
NEXT ASSY	USED ON	SEE NOTES		Q.A.			SIZE	DWG. NO.	REV
APPLICATION		DO NOT SCALE DRAWING		COMMENTS:			<b>A</b>	<b>OAVBR20R32</b>	
							SCALE: 1:1	WEIGHT:	SHEET 1 OF 1