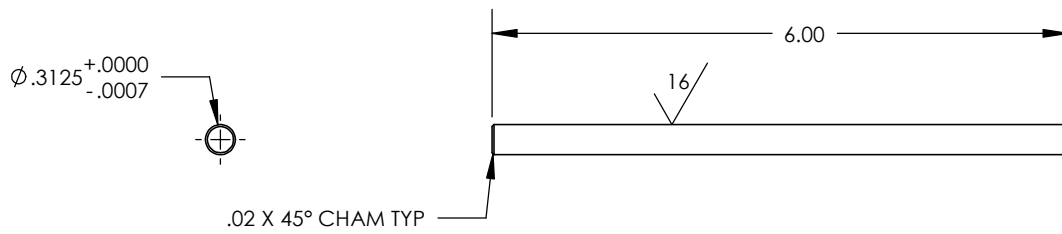
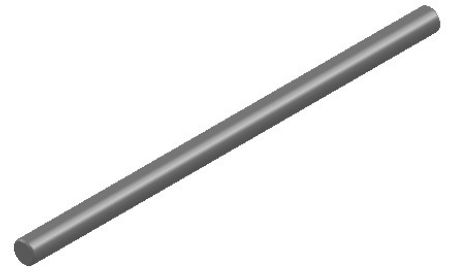


NOTES

- 1) MATERIAL MUST BE 316, 304 OR 304L STAINLESS STEEL PER AMS 5639 OR QQ-S-763.
- 2) 63 SF ALL OVER UNLESS OTHERWISE SPECIFIED
- 3) MUST HAVE STRAIGHTNESS OF .002" PER FOOT MAX



<p><b>PROPRIETARY AND CONFIDENTIAL</b></p> <p>THE INFORMATION CONTAINED IN THIS DRAWING IS THE SOLE PROPERTY OF OAVCO. ANY REPRODUCTION IN PART OR AS A WHOLE WITHOUT THE WRITTEN PERMISSION OF OAVCO IS PROHIBITED.</p>			DIMENSIONS ARE IN INCHES TOLERANCES: FRACTIONAL: ANGULAR: ±1/4° ONE PLACE DECIMAL ±.01 TWO PLACE DECIMAL ±.01 THREE PLACE DECIMAL ±.005		NAME	DATE	<p><b>.3125 INC SHAFT</b></p>	
					DRAWN	JS		12/1/22
					CHECKED			
					ENG APPR.			
					MFG APPR.			
			MATERIAL SEE NOTES		Q.A.			
			FINISH SEE NOTES	COMMENTS:				
	NEXT ASSY	USED ON						
	APPLICATION		DO NOT SCALE DRAWING					
				SIZE	DWG. NO.		REV.	
				<b>A</b>	OAV0312SHAFT			
				SCALE:1:2	WEIGHT:		SHEET 1 OF 1	