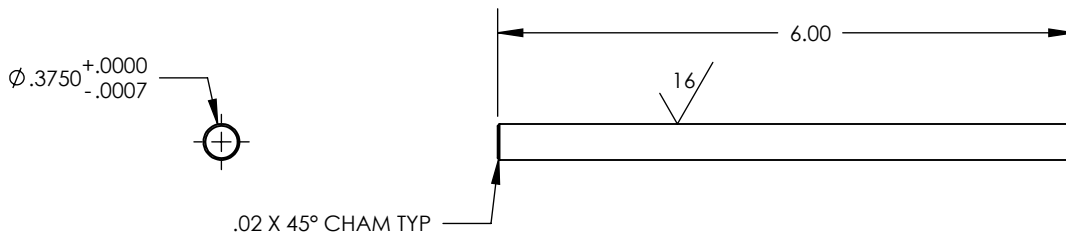
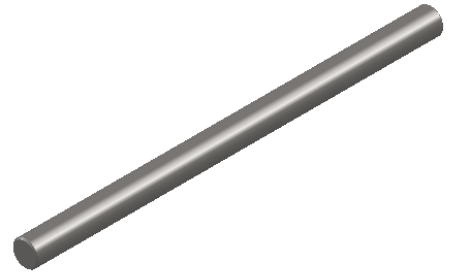


NOTES

- 1) MATERIAL MUST BE 316, 304 OR 304L STAINLESS STEEL PER AMS 5639 OR QQ-S-763.
- 2) 63 SF ALL OVER UNLESS OTHERWISE SPECIFIED
- 3) MUST HAVE STRAIGHTNESS OF .002" PER FOOT MAX



<p>PROPRIETARY AND CONFIDENTIAL</p> <p>THE INFORMATION CONTAINED IN THIS DRAWING IS THE SOLE PROPERTY OF OAVCO . ANY REPRODUCTION IN PART OR AS A WHOLE WITHOUT THE WRITTEN PERMISSION OF OAVCO IS PROHIBITED.</p>			DIMENSIONS ARE IN INCHES				<p>.375 INC SHAFT</p>	
			TOLERANCES:		DRAWN	NAME		DATE
			FRACTIONAL:		JT			8/5/13
			ANGULAR: ±1/4°		CHECKED			
			ONE PLACE DECIMAL ±.01		ENG APPR.			
		TWO PLACE DECIMAL ±.01		MFG APPR.				
		THREE PLACE DECIMAL ±.005		Q.A.				
		MATERIAL	SEE NOTES		COMMENTS:			
		FINISH	SEE NOTES					
NEXT ASSY	USED ON	APPLICATION		DO NOT SCALE DRAWING				
				SIZE	DWG. NO.	REV.		
				A	OAV0375SHAFT			
				SCALE:1:2	WEIGHT:	SHEET 1 OF 1		