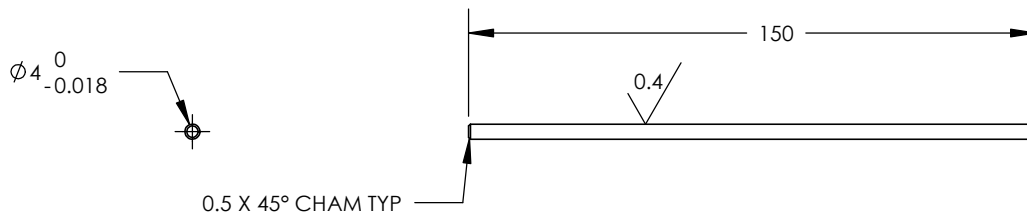
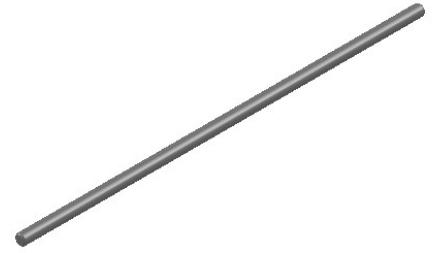



NOTES

- 1) MATERIAL MUST BE 316, 304 OR 304L STAINLESS STEEL PER AMS 5639 OR QQ-S-763.
- 2) 1.6 SF ALL OVER UNLESS OTHERWISE SPECIFIED
- 3) MUST HAVE STRAIGHTNESS OF .03MM PER 300MM MAX



<p>PROPRIETARY AND CONFIDENTIAL</p> <p>THE INFORMATION CONTAINED IN THIS DRAWING IS THE SOLE PROPERTY OF OAVCO. ANY REPRODUCTION IN PART OR AS A WHOLE WITHOUT THE WRITTEN PERMISSION OF OAVCO IS PROHIBITED.</p>			DIMENSIONS ARE IN MILLIMETERS TOLERANCES: FRACTIONAL: ANGULAR: $\pm 1/4^\circ$ ONE PLACE DECIMAL $\pm .2$ TWO PLACE DECIMAL $\pm .1$	DRAWN	JS	12/1/22	 <h2>4MM SHAFT</h2>	
					CHECKED			
					ENG APPR.			
				MFG APPR.				
				Q.A.				
				COMMENTS:				
	NEXT ASSY	USED ON	FINISH	SEE NOTES				
	APPLICATION		DO NOT SCALE DRAWING					
				SIZE	DWG. NO.		REV.	
				A	OAV04MMSHAFT			
				SCALE: 1:2	WEIGHT:		SHEET 1 OF 1	