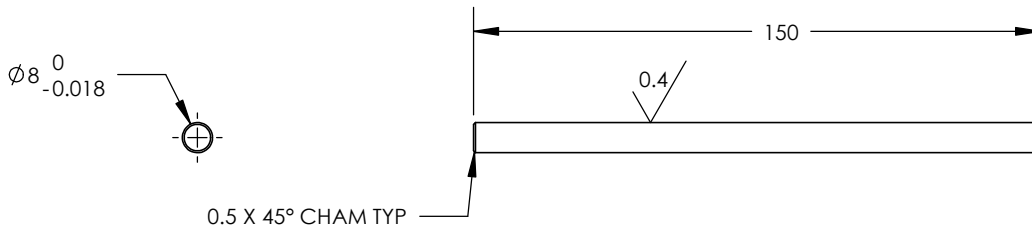
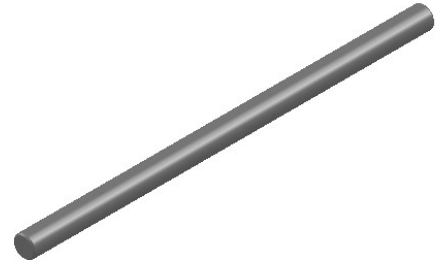



NOTES

- 1) MATERIAL MUST BE 316, 304 OR 304L STAINLESS STEEL PER AMS 5639 OR QQ-S-763.
- 2) 1.6 SF ALL OVER UNLESS OTHERWISE SPECIFIED
- 3) MUST HAVE STRAIGHTNESS OF .03MM PER 300MM MAX



<p>PROPRIETARY AND CONFIDENTIAL</p> <p>THE INFORMATION CONTAINED IN THIS DRAWING IS THE SOLE PROPERTY OF OAVCO . ANY REPRODUCTION IN PART OR AS A WHOLEWITHOUT THE WRITTEN PERMISSION OFOAVCO IS PROHIBITED.</p>			DIMENSIONS ARE IN MILLIMETERS TOLERANCES: FRACTIONAL: ANGULAR: ±1/4° ONE PLACE DECIMAL ±.2 TWO PLACE DECIMAL ±.1	DRAWN	JS	12/1/22	 <h1>8MM SHAFT</h1>
				CHECKED			
				ENG APPR.			
			MFG APPR.				
			Q.A.				
				COMMENTS:			
			MATERIAL	SEE NOTES			
			FINISH	SEE NOTES			
	NEXT ASSY	USED ON	APPLICATION	DO NOT SCALE DRAWING			
				SIZE A	DWG. NO. OAV08MMSHAFT	REV.	
				SCALE:1:2	WEIGHT:	SHEET 1 OF 1	