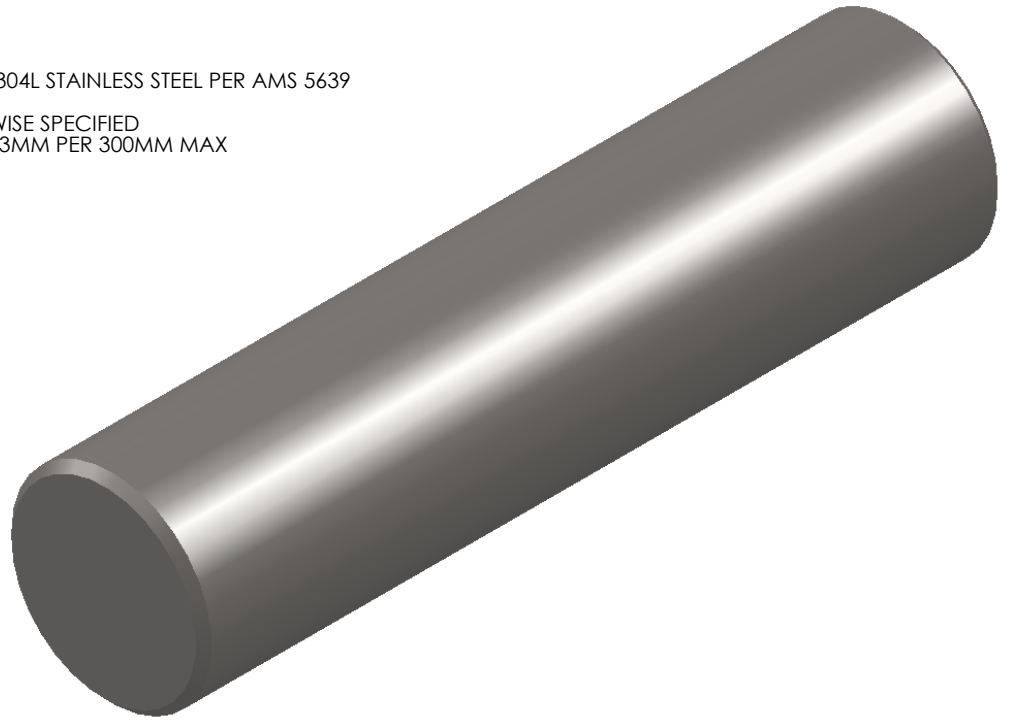
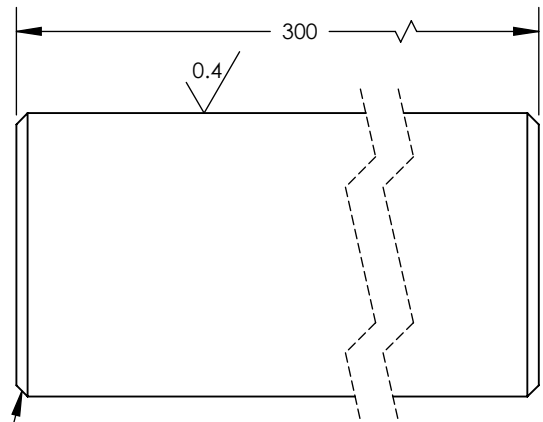
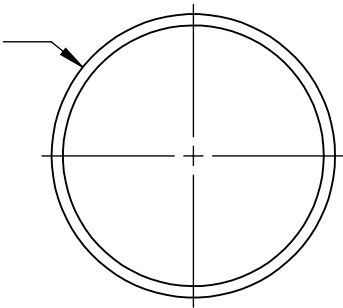


NOTES


- 1) MATERIAL MUST BE 316, 304 OR 304L STAINLESS STEEL PER AMS 5639 OR QQ-S-763.
- 2) 1.6 SF ALL OVER UNLESS OTHERWISE SPECIFIED
- 3) MUST HAVE STRAIGHTNESS OF .03MM PER 300MM MAX



$\phi 75_{-0.018}^0$



3 X 45° CHAM TYP

<p><b>PROPRIETARY AND CONFIDENTIAL</b> THE INFORMATION CONTAINED IN THIS DRAWING IS THE SOLE PROPERTY OF OAVCO . ANY REPRODUCTION IN PART OR AS A WHOLEWITHOUT THE WRITTEN PERMISSION OFOAVCO IS PROHIBITED.</p>		DIMENSIONS ARE IN MILLIMETERS		NAME	DATE	  <h1>75MM SHAFT</h1>
		<p>TOLERANCES: FRACTIONAL: ANGULAR: <math>\pm 1/4^\circ</math> ONE PLACE DECIMAL <math>\pm .2</math> TWO PLACE DECIMAL <math>\pm .1</math></p>		DRAWN	JT	
NEXT ASSY	USED ON	MATERIAL	FINISH	CHECKED	ENG APPR.	REV.
		SEE NOTES	SEE NOTES	MFG APPR.	Q.A.	
APPLICATION		DO NOT SCALE DRAWING		COMMENTS:		<p>SIZE DWG. NO. <b>A</b> OAV75MMSHAFT</p> <p>SCALE:1:2 WEIGHT: SHEET 1 OF 1</p>