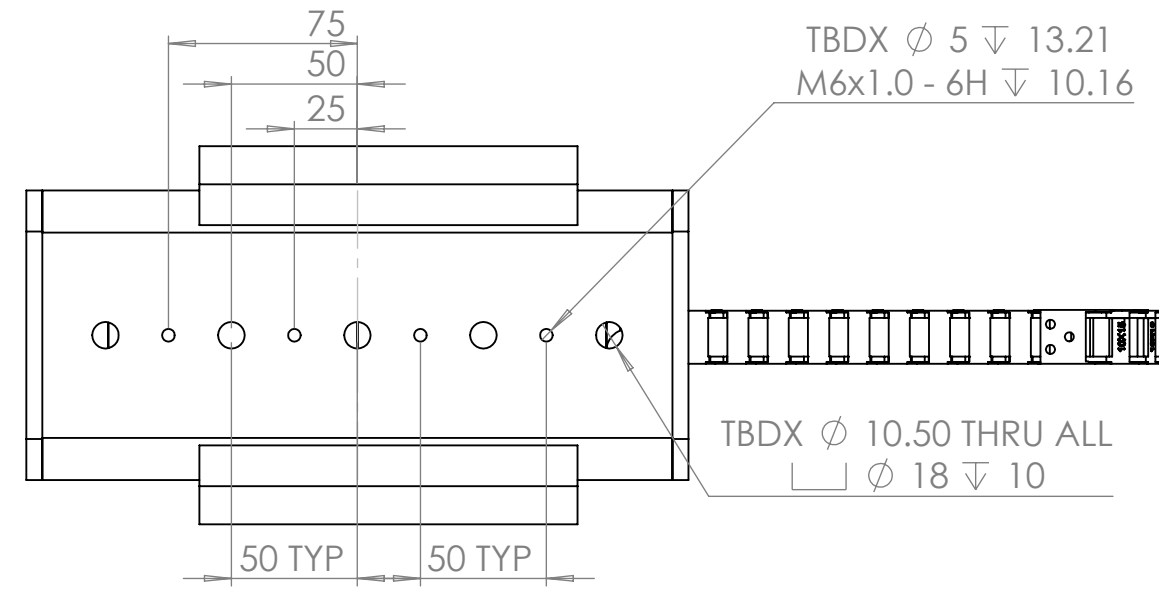
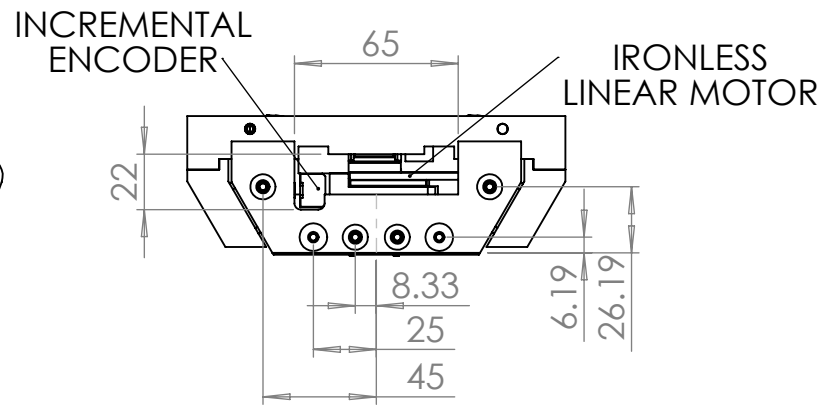
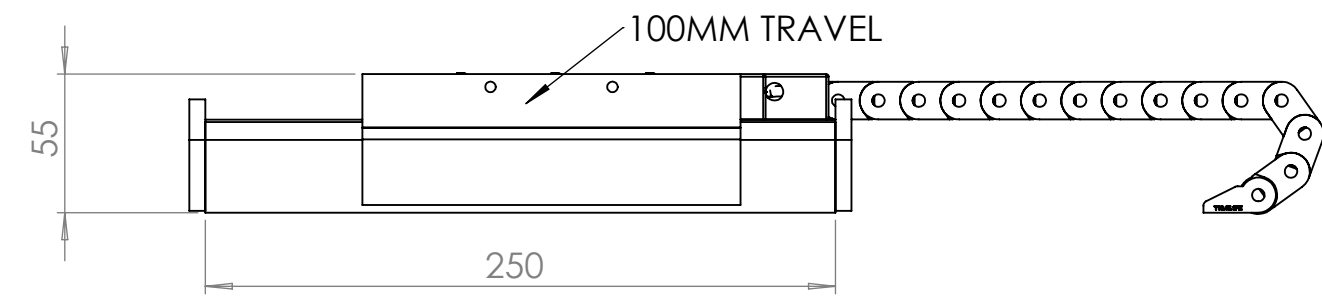
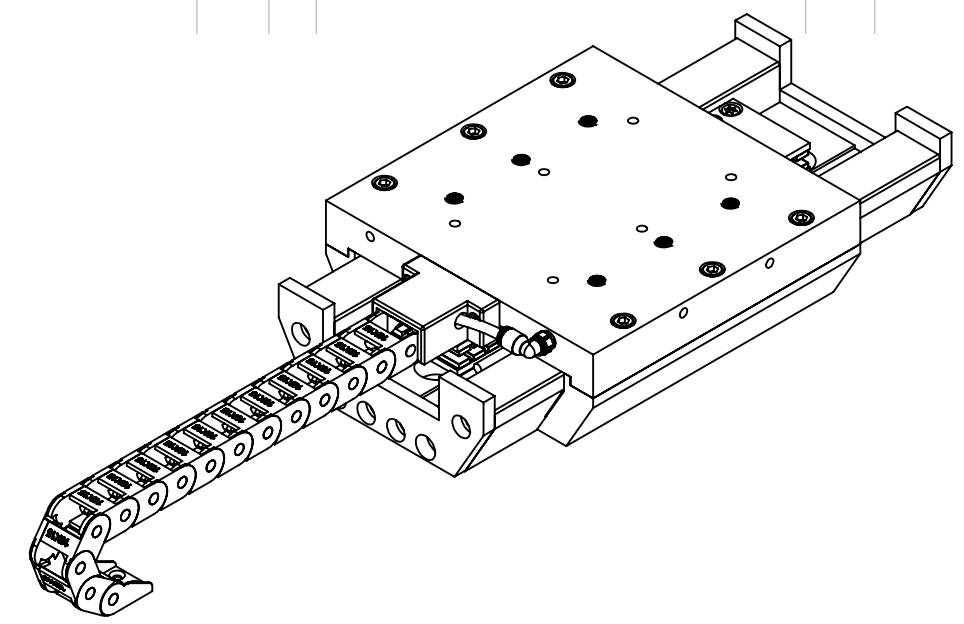
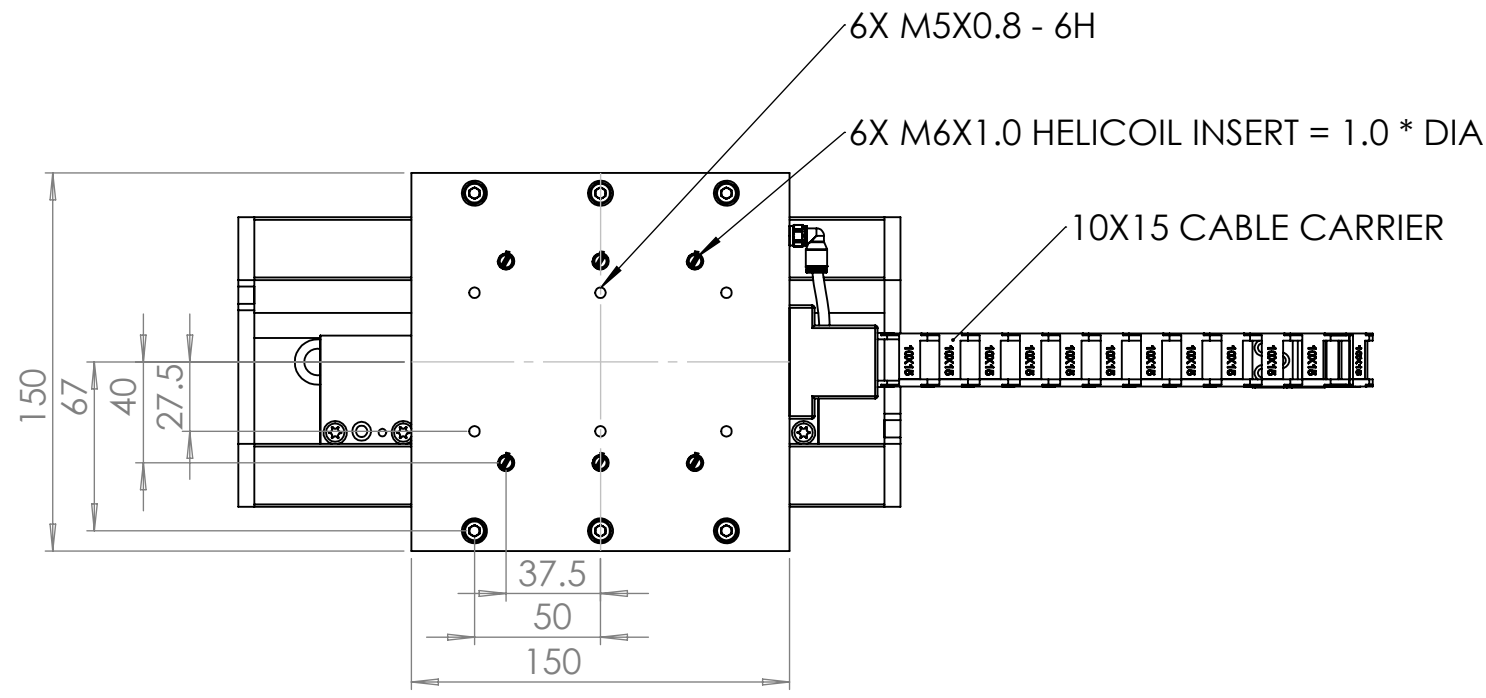



REVISIONS				
ZONE	REV.	DESCRIPTION	DATE	APPROVED



Part # OAVDOV-150-150-M100
 Carriage Size: 150mm x 150mm
 Carriage Weight: 2.9 lb (1.3 kg)
 Z direction Load: 352 lb (1565 N)
 Y direction Load: 304 lb (1532 N)
 Travel Length Options:
 50mm/100 mm/200 mm/300mm/Custom
 Encoder: 50 nanometers per count
 Ironless Motor: Peak force 36 N Continuous 10 N
 Peak Current: 3.1 A Continuous 0.83 A

UNLESS OTHERWISE SPECIFIED DIMENSIONS ARE IN MILLIMETERS TOLERANCES: ANGULAR: ±0.5° ONE PLACE DECIMAL ±0.1 TWO PLACE DECIMAL ±0.05 THREE PLACE DECIMAL ±0.01		FINISH: See Notes	DEBUR AND BREAK SHARP EDGES	DO NOT SCALE DRAWING	REVISION
DRAWN	NAME JH	SIGNATURE	DATE 1/16/26	 TITLE: DOV Series Motorized DWG NO. OAVDOV-150-150-M100	
CHK'D					
APPVD					
MFG					
Q.A					
MATERIAL: See Notes			WEIGHT:	SCALE:1:3	SHEET 1 OF 1

TBDX ϕ 5 ∇ 13.21
 M6x1.0 - 6H ∇ 10.16

TBDX ϕ 10.50 THRU ALL
 \square ϕ 18 ∇ 10