



North Spitsbergen Polar Bear Special

22 - 29 June 2017
on board

MV Plancius



MV *Plancius* was named after the Dutch astronomer, cartographer, geologist and vicar Petrus Plancius (1552-1622). *Plancius* was built in 1976 as an oceanographic research vessel for the Royal Dutch Navy and was named *Hr. Ms. Tydeman*. The ship sailed for the Royal Dutch Navy until June 2004 when she was purchased by Oceanwide Expeditions and completely refit in 2007, being converted into a 114-passenger expedition vessel. *Plancius* is 89 m (267 feet) long, 14.5 m (43 feet) wide and has a maximum draft of 5 m, with an Ice Strength rating of 1D, top speed of 12+ knots and three diesel engines generating 1230 hp each.



Captain Alexey Nazarov

and his international crew of 49

including:

Hotel Manager:	Sebastian Duma	[Romania]
Assist. Hotel Manager:	Sava Savov	[Bulgaria]
Head Chef:	Gabor Kiss	[Hungary]
Sous Chef:	Ivan Yuriychuk	[Ukraine]
Ship's Physician:	Bram Hulst	[Netherlands]
Expedition Leader:	Michael Ginzburg	[Germany/Russia]
Asst Expedition Leader:	Sebastian Arrebola	[Argentina]
Expedition Guide:	Lynn Woodworth	[Canada/Australia]
Expedition Guide:	Aleksandr Romanovski	[Russia/Norway]
Expedition Guide:	Frigga Kruse	[Germany]
Expedition Guide:	Karen Mulders	[Netherlands]
Expedition Guide:	Wilson Cheung	[Hong Kong]
Expedition Guide	Sara Jenner	[United Kingdom]
Dive Master	Henrik Enckell	[Sweden]
Dive Guide	Michael Green	[United Kingdom]
Dive Guide	Tanja Bayer	[Germany]
Dive Guide	Yolly Bosinger	[Switzerland]

Welcome you on board!

Day 1 – Thursday 22 June 2017

Longyearbyen, Spitsbergen

GPS Position 08:00: 78°14.4' N / 015°37.3' E

Wind: WSW - 4 Sea state: slight Weather: overcast Temperature: 4°C

We gathered from all points on the globe on an overcast day in Longyearbyen, capital (and only real population centre) of Svalbard. The rugged hills around were striped with snow, but the day was not too cold. Once off our flights, we were dropped in town where we explored the small settlement, had a coffee or went bird watching. Just after four o'clock, we began boarding the ship, which was our first adventure - we were transferred to the *Plancius* using the black rubber Zodiac boats that would become so familiar. Once on board, we settled in to our cabins, and later found our way to the Observation Lounge. Once we had all gathered, Third Officer Warren presented the mandatory safety briefing to show us how to use the big orange lifejackets and how to muster in case of emergency. The briefing was immediately followed by a safety drill, to ensure we knew how to muster in the lounge and proceed to the lifeboats if ordered to by the Captain.



After we returned our lifejackets to our cabins, we were again invited to the Lounge. Captain Alexey spoke a few words of welcome and proposed a toast to our voyage. Our Hotel Manager Sebastian helped us settle in

with more information about how the ship works, and Michael, our Expedition Leader, introduced the Expedition Team. After a few helpful hints from Bram, our ship Doctor, we went to our first dinner on board. There, we sat at tables of six and more, making new friends and wondering what would come in the days ahead.

We lifted anchor and sailed from Longyearbyen, through Isfjord and towards open water along the West coast of Spitsbergen just before seven in the evening. As we were reaching the Western end of the fjord and finishing dinner, Michael cleared the dining room by announcing "Blue whale!" We all rushed back to our cabins for coats and cameras, then found our way outside. Whale blows were visible just ahead of the ship, huge and bushy, with a little bit of a 'V' visible. Two whales surfaced about four times, then went down for six or seven minutes, and re-surfaced much closer to the ship. Long, mottled grey and very impressive, the whales kept surfacing nearby, sometimes turning towards the *Plancius*. We

left the whales in peace and headed in to the Observation Lounge for desert - ice cream! At last, tired from our travels, we retired to our cabins to rest and get ready for the first full day of our adventure.



Day 2 – Friday 23 June 2017

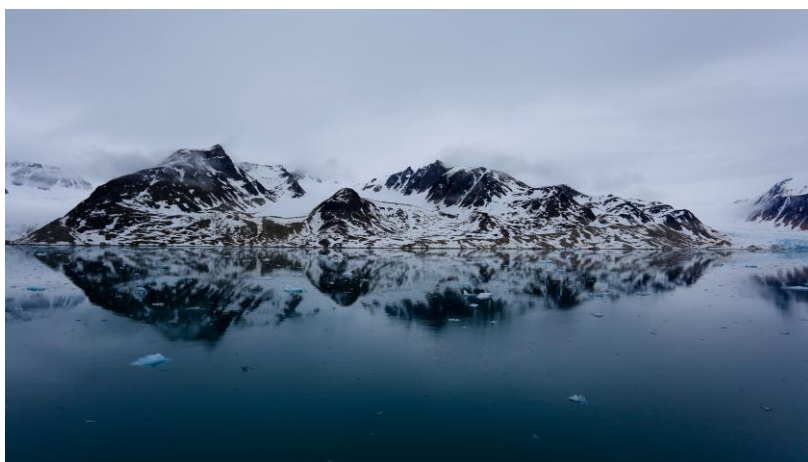
Raudenfjord

GPS Position 08:00: 79°33.6' N / 010°28.5' E

Wind: N - 4 Sea state: slight Weather: cloudy Temperature: 4°C

For those of us who had never been on a cruise before, any fears of moving water and moved stomachs were totally unfounded – the Arctic sea had been calm all night while the *Plancius* made steady progress towards the Northwest corner of Spitsbergen. After some much-needed sleep, we woke up to Michael's voice over the PA system. Besides wishing us a good morning, he also informed us about the weather and our current location. The ship would be cruising in Smeerenburgfjorden, named after the 17th-century Dutch whaling station here, while we attended the morning's program. This entailed a buffet breakfast, receiving our rubber boots, and the necessary safety briefings about Zodiac operations and polar bears.

Once the briefings were over, there was plenty of time to enjoy the view of the 20-km long fjord from one of the outside decks. Since the wind was almost completely still, the steep mountain sides and the front



of Smeerenburgreen (breen = glacier) reflected beautifully in the water. Occasionally, raindrops would obscure the images. All around us were seabirds like Kittiwakes and Brünnich's guillemot, either flying, floating, or diving. One or two seals popped their heads up, too.

After a buffet lunch, the *Plancius* had found her way into Raudfjorden, named after red-coloured rocks of the Devonian age. There was still much fast ice in front of Raudfjordbreen, and here, Michael made us aware of our first polar bear of the trip. It was a sad sight. Apparently, this particular bear had already been seen on the last trip, then a very thin and sick-looking individual. Since then, the bear had died. This, too, is the reality of the Arctic.

Later in the afternoon, the ship anchored along the edge of the fast ice. The team of divers on board would now do their first test dive. The rest of the passengers were divided into two groups to take part in our first Zodiac cruise. Without the noises of the ship, being at water level was much more quiet, even a little bit eerie. The omnipresence and noise of the birds was much more noticeable though. We were able to get close to a number of seals. The Minke whale, which some of us had seen earlier from board the ship, unfortunately did not re-appear.



Day 3 – Saturday 24 June 2017

Sea Ice Edge

GPS Position 08:00: 80°03.9' N / 013°12.9' E

Wind: light air Sea state: slight Weather: overcast Temperature: 5°C

As we all know, Spitsbergen is one of the northernmost pieces of land in the world. But what's next? What can we see when keep on going North? The Arctic Ocean, the smallest, but obviously the most beautiful one of four. Russians call it The Northern Icy Ocean, as it is covered with an ice shell all year round. In summer, however, the ice is usually not a solid massive, but drifting ice flows. This day we were given a chance to feel and enjoy the unique Arctic atmosphere when cruising through the ice in search of Polar bears.



Plancius is a vessel of an ice class, but not yet an icebreaker, it means, it can sail between ice flows, push them and even break some of them, but it cannot go through solid ice fields. For our cruise it is enough, because there was no aim to approach the North Pole, but to try to spot Arctic wildlife without going too far from Spitsbergen. The weather from the very beginning of the day could be described as excellent: no wind, no clouds, good visibility, only interrupted by patches of fog in some places.

At 11 o'clock a very interesting event took place. We had a meeting with *Ortelius*, the sister ship of *Plancius*. It approached slowly from the East. The meeting itself was of a technical character, but anyway it was very exiting to wave hands to our fellow passengers and to watch the real adventure of a Zodiac boat, launched from our ship to *Ortelius* in order to pick up some equipment. The boat was maneuvering between ice flows and eventually got stuck, but the brave sailors did not give up and managed to push the Zodiac back on the water. Eventually everything ended up well and our ships continued following their routes.



Observation of surrounding beauty of the Arctic Ocean was interrupted at 3pm by the



announcement of Michael, our expedition leader: "Ladies and gentlemen, we have spotted a bear!" Everybody rushed to their cabins to dress up and grab a camera. Meanwhile our

Captain Alexey was slowly and gently leading the ship forward towards the bear trying not to scare him away. The bear was walking pretty fast in a Northern direction. We managed to approach approximately 100-150 meters to him and take some good pictures. The bear did not feel like posing for us, so our meeting did not last long.



A couple of hours later, when *Plancius* was slowly sailing Eastwards, we met a small group of Walrus. They appeared to be pretty shy and got into water when we approached, but still it was possible to take pictures of their fanged faces. A little bit later we saw another

small group of three. As we approached, we watched the larger animal push the smaller two into water.

It was already evening, but not yet the end of the day. At 7pm Michael announced a second bear spotted. This time we were more lucky as we managed to approach it pretty closely and spend about half an hour taking pictures and watching the bear.

After that we got acquainted with the plan for tomorrow. Very nice, very interesting and by now the most Northern day of our journey.



Day 4 – Sunday 25 June 2017

Smeerenburg & Magdalenefjord

GPS Position 08:00: 79°43.4' N / 011°02.2' E

Wind: light air Sea state: calm Weather: clear Temperature: 8°C

Today we woke up to a stunning weather, beautiful calm seas and a sunny morning. After yet another nice breakfast, we were all invited to come ashore on Amsterdamøya, to visit the remains of the 17th century Dutch whaling station Smeerenburg (“Blubbertown”). Some

of the house remains were still covered in meltwater, but the foundations of the blubber ovens were easy to see from a safe distance. We split up into three groups and we took turns to go and see a group of Walrus hauled out on the beach. The males were very relaxed and did not mind us coming in up to 30m, enabling marvellous pictures of these magnificent animals. We also checked out the remains of the blubber ovens and the history of whaling activity in Spitsbergen. During the walk on the beach we saw all the wood that drifted all the way from Siberian forests to the beaches of Svalbard, but unfortunately it wasn't the only material present on the beach, there was also some rubbish washed ashore that came drifting North with currents. On our way back we picked up some of the plastic garbage and brought it back to the ship to be discharged in Longyearbyen.



A little after twelve, everybody was back on the ship (all tags were green again) and a tasty lunch buffet was prepared for us. During lunch the Captain set off to Magdalenefjord where we left the ship once again to go on a Zodiac cruise. The afternoon was sunny and with almost no wind. On our way to the glacier we saw some Common eiders and few Harbour seals, which is not a very common sight in this part of the world. The glacier itself has a really nice ice front with a lot of cracks as it is sliding down the mountain, but it was also quite clear that it is melting: there were very few bits breaking off of the front and in the bay there were “bergy bits” and icebergs. We could clearly see how far the glacier once reached thanks to the still visible moraines that were once in the middle of the glacier, where various glacial tongues met to form a bigger glacier to fill the fjord. On our way back toward the ship, we decided to stop at Gravesneset where many early whalers and sailors found their last resting places in the 17th-19th centuries. Some brave ones decided to defy the cold Arctic waters and go for a swim.



The evening was complemented with a good meal in the restaurant and some after-dinner gathering in the lounge.

Day 5 – Monday 26 June 2017

Sea Ice Edge

GPS Position 08:00: 79°54.4' N / 013°12.3' E

Wind: E - 2 Sea state: ice Weather: clear Temperature: 4°C

A glistening icescape met the drowsy eyes of the early risers this morning. At 05:00 the sun was shining and the scenery surrounding the ship was nothing short of incredible. However, by the time Sebastian brought a good news about 09:30 that he found a Polar bear in front of Raudfjorden. Lucky enough for us, the bear was hunting the seal on the edge of the sea ice. However, the polar bear ran out of luck to get his breakfast, and missed catching the seal who escaped into the water. But we were able to spend about one hour wandering with this Polar bear on the sea ice edge and enjoy the icescape with an impressive mountain range as a backdrop.

While enjoying the unique view unfolding before us many of us took to the decks with our cameras and binoculars, scanning every which way in the hope of finding the elusive Polar bear. Although the bears were proving hard to find, there was an abundance of seals hauled out on the ice. Every way we looked there were large Bearded seals. What's more, the sea birds were a continuous and lively sighting. Kittiwakes, Little auks and Guillemots both flew around the ship and bobbed on the surface of the sea below us.



At 11:00, our expedition team discovered two Walrus in front of the ship and drifting at sea. Captain Alexey sailed the ship carefully and slowly to get close to the Walrus. Everyone got their camera quickly and watched the Walrus play around the ice pack. It was breathtaking to watch the Walrus climb up the ice and listen to them breathe. It was a very great experience to watch Walrus eye to

eye and close like this. While looking we also took the opportunity to photograph the Kittiwakes and Glaucous gulls as they dove into the water to pick out the Arctic cod that were exposed as *Plancius* ploughed through the pack ice. Several Pomerane skua were also

shadowing the feeding birds, eager to harass the successful ones and claim a meal of their own.

Of course, being in the pack ice didn't mean that we could rest and so after lunch the expedition team offered an amazing experience along the sea ice pack. Captain Alexey sailed the ship deep into a piece of a ice sea professionally. After the expedition team did all the safety checks, all of us started to "disembark" on the ice sea and walk above the Northern Sea. This



is a unique experience to walk on the thin sea ice and take a picture with the ship at sea level. Thanks for the hotel team who served us a glass of wine at the end of this wonderful day.

At 18:00 we were invited down to the aft deck for our special Arctic BBQ. The hotel team had prepared a real feast of meats and salads and with complimentary drinks, and the party soon got underway with dancing continuing late into the evening. A great end to a great day! Throughout the evening we sailed further South to our destination for tomorrow, keeping an eye out for any whale blows from the lounge before retiring to our cabins for the night. Many people stayed up well into the night to enjoy the endless sunshine on this glistening sea scape. It had been a truly wonderful day.



Day 6 – Tuesday 27 June 2017

Ny London & 14th of July Glacier

GPS Position 08:00: 78°57.3' N / 012°01.9' E

Wind: S - 3 Sea state: smooth Weather: overcast Temperature: 3°C

After a night with a little more swell and wind than the last couple of days, it was time to walk off the BBQ from yesterday at Ny London on Blomstrandhalvøya. In three groups we explored the remains of the failed marble mining operation and rusting machinery that Ernest



Mansfield had brought up here between 1911 and 1920. It was nice to have Frigga around as she studied the history of the various mining operations on Svalbard for her PhD and was able to tell us more on the Northern Exploration Company and the quarries, machinery and railroad tracks as well as on the various reasons for the marble mining to stop. Now we now that the names Ny London and Camp Mansfield (which can be read over the door of one of the two huts) are not from the early years, but from later date and given to the places by the Norwegians. And that 4 of the 100 year old huts have been transported to the other side of the fjord and are also still in use as research stations in the settlement of Ny Ålesund. From Ny London all three parties explored the tundra and hills around the

settlement, were the Purple saxifrages and Moss Campion were coloring the tundra nicely. Most of the hikers saw a lovely reindeer calf with its mother grazing behind the oldest (summer) quarry (which was neatly and straightly cut, in comparison to the jitty-handcut winter marble quarry). Some hikers also saw some blue whales in the Kongsfjord and breeding Long-tailed skuas on the tundra.



In the afternoon we explored the bay in front of the 14th of July Glacier with lovely bergy bits, some washed up on shore, and even some small blue-ish icebergs. In two groups we explored the shores of the bay. A group walked up to the “hanging gardens” of wonderful Arctic flora on the rocks

along the beached brash-ice under the Kittiwake colonies first. A second group started off in Zodiacs exploring the nearby bird-cliffs where Guillemots, Glaucous gulls and Puffins were nesting and where quite a large group of reindeer was grazing. It was quite an adventurous cruise due to the currents, swell and 12 knots of wind coming from the glacier. Halfway through the expedition, the groups swapped and by six o'clock everybody was back on board for a recap on Reindeer and the blue color of glacial ice, as well as the briefing for tomorrow.

During dinner *Plancius* sailed through the rainy evening further southwards towards our destination for our last day.



Day 7 –Wednesday 28 June 2017

St Jonsfjord & Tordenskioldbukta

GPS position 08.00 am: 78°31.0'N 012°50.6'E

wind: ESE- 3 Seastate: smooth Weather: rainy Temperature: 3°C

We woke to grey skies and a slight drizzle of rain, but this was certainly nothing to worry about, after all, this was expedition cruising! A little bit of unfavourable weather could only add to the atmosphere and dramatic quality of our pictures, after all we were meant to be in the Arctic!

After a hearty breakfast it was time for Michael to outline the plan for this morning, which was to be a landing at Gjertsenodden in St Jonsfjord.

We landed on a flat sandy beach, where vast tracts of moraine left behind by a retreating glacier have formed a rolling and hilly terrain behind. Frigga and Sasha set off with the long walkers, aiming for a distant ridge, shortly afterwards the medium group set off and finally the leisurely walkers strolled along the shoreline with Lynn paying close attention to the wonderful flora that was now beginning to bloom. There were a few reindeer on the slopes, some of which were very inquisitive and came remarkably close and one of the groups even managed to get a quick glimpse at an Arctic fox before it darted up the hillside. For the birders amongst us there was great excitement at spotting the Svalbard rock ptarmigan, this is a true Arctic bird as it does not flee to warmer climes to escape the harsh

winter like most. Most of us had a look at the very small trapper's hut which was just set back from the shoreline, looking out over the fjord, but one thing was for sure we all took time to stop, listen and enjoy the fabulous views and sounds of the Arctic.



All safely back on board we enjoyed our last lunch on the *Plancius*, meanwhile the ship made her way to Poolepynten which was to be our final landing of this exciting expedition. Poolepynten is known for its haul-out of walruses and we all hoped that luck would be with us today and we might get another good view of these incredible creatures. However, as so often happens with expedition cruising we

were forced to turn to Plan B when on arrival at Poolepynten we noticed that the walruses were no longer 'at home' and the beach was in fact empty. Plan B involved sailing south to Tordenskioldbukta where we could do a landing and short hike. Tordenskioldbukta is known for its wide open plains, open bays and high density of reindeer and this is exactly what we got. On arrival to the bay we split into three groups, one of which ambled along the coast line with Frigga exploring the various archaeological artefacts, whilst the other two groups headed slightly inland in search of reindeer and any other wildlife they might be lucky enough to stumble upon. The reindeer were incredibly obliging, stopping and posing for everyone's photos at close range and at one point even appeared to follow us on at our exploration. Despite having to resort to a Plan B this afternoon, this site seemed to be the perfect way to end the voyage as in many ways it seem to encapsulate the 'best of the Arctic summer'; green, lush tundra in bloom against a backdrop of snow topped mountains, dotted with reindeer and birdlife.

As soon as everybody was back on the ship, it was sadly time for the *Plancius* to lift anchor and head towards Longyearbyen.

No sooner had we got a hot drink to warm ourselves was it time to head back up into the lounge for our final evening briefing. After a toast from the Captain, there were thanks to all of the people who made the trip so enjoyable, followed by all the information we need for our disembarkation. Our last dinner was full of talk and laughter and we moved from the dining room to the lounge, enjoying our last night on board, but still remembering to pack our bags for their early departure from the ship.

Day 8 – Thursday 22 June 2017

Longyearbyen, Spitsbergen

GPS Position 0800: 78°14.2' N / 015°35.6' E

We woke far too early, at anchor in Longyearbyen, sad to know we will be leaving the ship. Our last breakfast seemed too early in the morning, but was very much appreciated, as we don't know where our next meals will be coming from!! We were back at the port of Bykoya in Longyearbyen, and it was time to leave the ship for the last time. On the dock, we found our luggage and sorted ourselves into the busses. We farewelled our new friends and set off on our travels and flights home, sad to be leaving, but also looking forward to our next adventures.



Total distance travelled:

689.2 nautical miles

1,276.4 kilometres

Furthest North 80°04.71'N/013°11.41E

***On behalf of Oceanwide Expeditions,
the Captain, Crew and Staff
on board MV Plancius:***



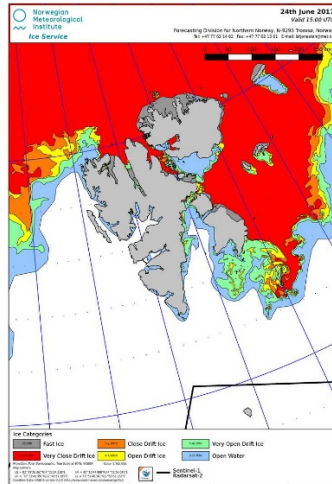
***It has been a pleasure travelling with you, and we hope
to see you again!***

www.oceanwide-expeditions.com



Plancius 07 Dive Log 22nd June to 29th June 2017.

Svalbard Norwegian Arctic.



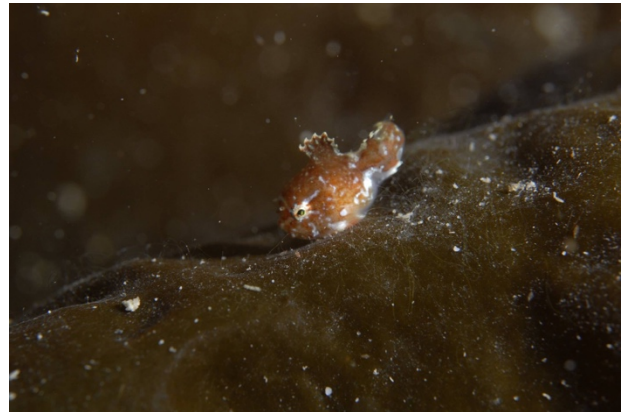
Dive Team Leader Henrik Enckell, Dive Guide Yolly Bossiger, Dive Guide Tanja Bayer, Dive Guide Michael Green, Dive Team, Faith A Ortins, Michael Lang, Kevin Friend, John Feehan, Valerie Feehan, Ryan King, Olga V Torrey, Alice K Duong, Leah Potts, Lawrence E Cohen, Karen Hoesen Velazquez, John P Ganson JR Annie Crawley, Leah Potts, Brooks MCCArthur Snorkelers Teresa Hoffman, Diane Hoffman, Leslie Ganson and Terry O'Rourke.



After making long flights to Svalbard we were soon underway. The first evening and morning were filled with mandatory briefings. But as soon as these were complete we started the dive program.

Dive One 23rd June 2017. Svalbard Arctic Norway Rouielfjorden 79 48.3N 11 54.4E.

This was our check dive where the team checked their buoyancy and equipment. There were the usual kit repairs needed after travel but these didn't stop the team having a good dive. Nudibranc were seen on the bottom along with a Lump sucker anemones, Sea Butterflies, Juvenile Hake, Comb Jelly, Skeleton Shrimp, Scallops and Urchins spawning. The visibility was good we enjoyed a dive in a Kelp forest. Soon the 40 minutes passed and it was time to return to ship. Some of the team enjoyed a Zodiac cruise through the ice to admire the beautiful scenery ashore. Now we are ready for the adventure to begin.ŷ



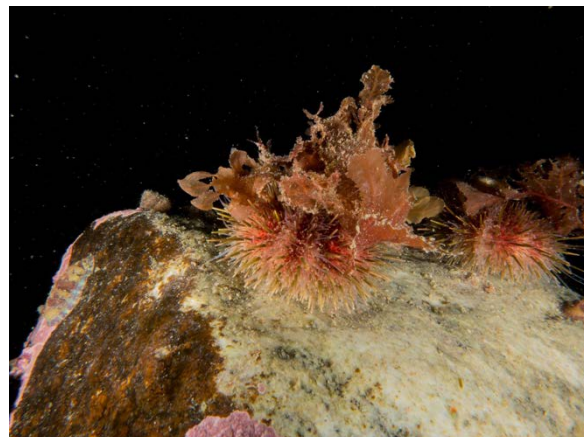
Dive Two 25th June 2017. Svalbard Arctic Norway Danskegattet Likholmen Rock Smeeremberg. 79 43.709N 10 54.185E.

The team made a dive on this historic site on an island in the bay. Once they got through the top couple of meters of water the visibility opened up to 3 or 4m. The topography underwater was shelving from shallow to very deep according to the soundings the dive guides took. The dive lasted for 40 minutes. We saw more lump suckers, Brittle Stars, Nudibranc with little protusions on their backs, Shrimps, Crabs, Scallops, Jellyfish and Sea Butterflies amongst the rocks and the vegetation. When we surfaced we went ashore to see the Walrus laid on the beach. The Blubber Kilns were interesting they have been on the beach since the 1700s and were used to render the blubber down into oil. Too soon it was time to return to the ship for lunch.



Dive Three 25th June 2017 Svalbard Arctic Norway Flugeholmen 79 34.553N 10 55.345E.

Mid-afternoon, we entered Magdalena Fjord in beautiful light. Soon after lunch we kitted up and were ready for our dive in good time. We left the ship which was at anchor and motored across to the larger islands near the fjord entrance. The light made for great visibility. On the dive we saw Fields of Skeleton Shrimps amongst the kelp forest, Crabs, Hermit Crabs, Sculpins and Spider Crabs. After the dive we went for a long zodiac cruise by the glacier venturing to 350m from the leading edge. This was a superb end to a great day.



Dive Four 27th June 2017 Svalbard Arctic Norway Nyllonden. 78 57.397N 12 12.033E

Our morning dive was in a beautiful fjord. The weather had changed and was now a little gloomy. We went to the dive site here where there are several huts from the old mining days. We dived into 10m of water and proceeded south and east into deeper water. As we kitted up Blue whale swam by the ship. On our dive we saw crabs in and amongst the Kelp and a different type of Algae which is being studied by the local scientists. After 40 minutes we returned to the surface. We had a quick lunch and were ready to go again.

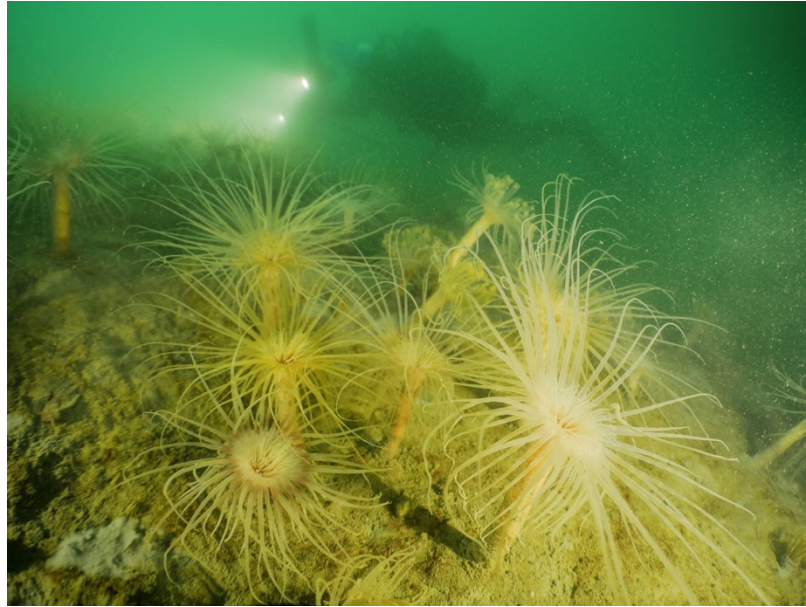
Dive Five 27th June 2017 Svalbard Arctic Norway, 14th of July Bukta. 79 07.508N 11 492E

This place is called 14th of July which is a strange name for a place. It is named after Bastille Day by the French people who lived there. The Fjord has a beautiful glacier at the end of it. We set out to dive with a short visit to a small iceberg for everyone to snorkel on. So much enjoyment was had photographing the ice and people on it that we decided to visit a second piece of ice to get more fun shots. Then we ventured closer to the glacier and safely watched the ice calving. Followed by a short Zodiac cruise on which we saw cliffs with thousands of seabirds and Reindeer eating the lichen on the shore.



Dive Six 28th June 2017 Svalbard Arctic Norway St Jonsfjord 78 30038N 12 50.78 5E

After Breakfast we kitted up in proper Arctic weather. Gloom and light drizzle. We decided to try to make a dive on the south coast of the fjord but the water was too milky. After getting detail of the distance from the ship to the north coast (1m) we headed across to try to find clearer water. Success! We found lees milky water and kitted up. The terrain was very steep and sandy mixed with debris from the glacier. We saw lots of Anemones on the wall which shot back into their body as we approached. They all were faced into the current feeding. There was also a fish eating another fish its same size which looked kind of strange. After 40 minutes we returned to the ship to get warm.



Dive Six 28th June 2017 Svalbard Arctic Norway Fraggie Rock 78 15.045N 12 45.8E

This afternoon's dive was plan B as the plan A was not suitable for a dive. This turned out to be great as the visibility was fantastic 10m+. The site was along a spit of tundra with beach and rocks. The seabed was undulating between 15m and 20m with a rocky bottom. The rock was covered by a beautiful kelp garden. The kelp had all the usual creatures on it. Crabs, Brittle Stars urchins underneath the stalks. The team played for almost an hour in the frigid Arctic water. Then it was time to Isurface and end a perfect diving holiday."





BIRDS OF SVALBARD

à

English Name	German	French
Great Northern Diver	Eistaucher	Plongeon Imbrin
Red-throated diver	Sterntaucher	Plongeon catmarin
Northern Fulmar	Eissturmvogel	Petrel fulmar
Leach's Storm Petrel	Wellenläufer	Océanite culblanc
Northern Gannet	Basstölpel	Fou de Bassan
Whopper Swan	Singschwan	Cygne chanteur
Bean Goose	Saatgans	Oie des moissons
Pink-footed Goose	Kurzschnabelgans	Oie à bec court
Barnacle Goose	Weisswangengans	Bernache nonnette
White-fronted Goose	Blässgans	Oie Rieuse
Greylag Goose	Graugans	Oie cendrée
Pale-bellied Brent Goose	Hellbäuchige Ringelgans	Bernache à ventre pâle
Brent Goose	Ringelgans	Bernache cravant
Snow Goose	Schneegans	L'Oie des neiges
Eurasian Wigeon	Pfeifente	Canard siffleur
Eurasian Teal	Krickente	Sarcelle d'hiver
Mallard	Stockente	Canard colvert
Northern Pintail	Spießente	Canard pilet
Tufted Duck	Reiherente	Fuligule morillon
Common Eider	Eiderente	Eider commun
King Eider	Prachteiderente	Eider à tête grise
Steller's Eider	Scheckente	Eider de Steller
Long-tailed Duck	Eisente	Harelde boréal
Black Scooter	Trauerente	Macreuse noire
Common Goldeneye	Schellente	Garrot à oeil d'or
Rock Ptarmigan	Alpenschneehuhn	Lagopède des Alpes
Eurasian Oystercatcher	Austernfischer	Huïtrier Pie
Ringed Plover	Sandregenpfeifer	Grand Gravelot
European Golden Plover	Goldregenpfeifer	Pluvier doré
Sanderling	Sanderling	Bécasseau sanderling
Pectoral Sandpiper	Graubruststrandläufer	Bécasseau tacheté
Purple Sandpiper	Meerstrandläufer	Bécasseau violet
Red Knot	Knutt	Bécasseau maubèche
Dunlin	Alpenstrandläufer	Bécasseau variable
Whimbrel	Regenbrachvogel	Courlis corlieu
Common Redshank	Rotschenkel	Chevalier gambette
Ruddy Turnstone	Steinwälzer	Tournepierre à collier
Grey Phalarope	Thorshühnchen	Phalarope à bec large
Red-necked Phalarope	Odinshühnchen	Phalarope à Bec mince
Pomarine Skua	Spatelraubmöwe	Labbe pomarin
Arctic Skua	Schmarotzerraub-möwe	Labbe parasite

Long-tailed Skua	Falkenraubmöwe	Labbe à longue queue
Great Skua	Skua	Grande Labbe
Sabine's Gull	Schwalbenmöwe	Mouette de Sabine
Black-headed Gull	Lachmöwe	Mouette rieuse
Common/Mew Gull	Sturmmöwe	Goéland cendré
Glaucous Gull	Eismöwe	Goéland bourgmestre
Iceland gull	Polarmöwe	Goéland arctique
Herring Gull	Silbermöwe	Goéland argenté
Lesser black-backed Gull	Heringsmöwe	Goéland brun
Great black-backed Gull	Mantelmöwe	Goéland marin
Kittiwake	Dreizehenmöwe	Mouette tridactyle
Ross' Gull	Rosenmöwe	Mouette de Ross
Ivory Gull	Elfenbeinmöwe	Mouette ivoire
Arctic Tern	Küstenseeschwalbe	Sterne arctique
Common Guillemot	Trottellumme	Guillemot de Treol
Brunnich's Guillemot	Dickschnabellumme	Guillemot de Brunnich
Black Guillemot ssp mandtii	Gryllteiste	Guillemot à miroir blanc
Little Auk	Krabbentaucher	Mergule nain
Puffin	Papageitaucher	Macareux moine
Barn Swallow	Rauchschwalbe	Hirondelle rustique
White Wagtail	Bachstelze	Bergeronnette grise
Meadow Pipit	Wiesenpieper	Pipit farlouse
Wheatear	Steinschmätzer	Traquet
Blackbird	Amsel	Merle noir
Snow Bunting	Schneeammer	Bruant des neiges
Redpoll	Birkenzeisig	Sizerin flammé
Lapland longspur	Spornammer	Plectrophane lapon
Fieldfare	Wacholderdrossel	Grive litorne
Redwing	Rotdrossel	Grive mauvis
Brambling	Bergfink	Pinson du Nord
Gyrfalcon	Gerfalke	Faucon Gerfaut

MAMMALS OF SVALBARD

English	German	French
Walrus	Walross	Morse
Bearded seal	Bartrobbe	Phoque barbu
Ringed seal	Ringelrobbe	Phoque marbré
Harp seal	Sattelrobbe	Phoque du Groenland
Hooded seal	Klappmütze	Phoque à capuchon
Common /Harbour seal	Seehund	Phoque commun
Minke Whale	Zwergwal	Petit rorqual
Sei Whale	Seiwal	Rorqual boréal
Blue Whale	Blauwal	Baleine bleue

Fin Whale	Finnwal	Rorqual commun
Humpback Whale	Buckelwal	Baleine á bosse
Bowhead whale	Grönlandwal	Baleine du Groenland
Sperm Whale	Pottwal	Cachelot
Narwhal	Narwal	Narval
Northern Bottlenose Whale	Entenwal (Dögling)	Hyperoden arctique
Orca (Killer Whale)	Schwertwal (Orca)	Orque
White-beaked Dolphin	Weisschnauzendelphin	Lagenorhynque
Beluga	Weisswal	Marsouin ou Dauphin blanc
Polar Bear	Eisbär	Ours blanc
Arctic Fox	Polarfuchs	Renard arctique
Spitsbergen Reindeer	Svalbard Renntier	Renne du Spitzberg
Sibling vole	Südfeldmaus	Campagnol des champs
Short tailed Vole	Erdmaus	Campagnol agreste

Day

Dutch	Latin	1	2	3	4	5	6	7
Ijsduiker	<i>Gavia immer</i>							
Roodkeelduiker	<i>Gavia stellata</i>			x	x		x	
Noordse stormvogel	<i>Fulmarus glacialis</i>	x	x	x	x	x	x	x
Vaal Stormvogeltje	<i>Oceanodroma leucorhoa</i>							
Jan-van-gent	<i>Morus bassanus</i>							
Wilde zwaan	<i>Cygnus cygnus</i>							
Taigarietgans	<i>Anser fabalis</i>							
Kleine rietgans	<i>Anser brachyrhynchus</i>							
Brandgans	<i>Branta leucopsis</i>				x		x	x
Kolgans	<i>Anser albifrons</i>				x		x	x
Grauwe gans	<i>Anser anser</i>							
Witbuikrotgans	<i>Branta hrota</i>							
Rotgans	<i>Branta bernicla</i>							
Sneeuwvangans	<i>Chen caerulescens</i>							
Smient	<i>Anas penelope</i>							
Wintertaling	<i>Anas crecca</i>							
Wilde eend	<i>Anas platyrhynchos</i>							
Pijlstaart	<i>Anas acuta</i>							
Kuifeend	<i>Aythya fuligula</i>							
Eider	<i>Somateria mollissima</i>	x	x	x	x	x	x	x
Konings eider	<i>Somateria spectabilis</i>				x			
Stellers eider	<i>Polysticta stelleri</i>							
Ijseend	<i>Clangula hyemalis</i>							
Zwarte zee-eend	<i>Melanitta nigra</i>							
Brilduiker	<i>Bucephala clangula</i>							
Spitsbergen Sneeuwwhoen	<i>Lagopus mutus hyperboreus</i>						x	x
Scholekster	<i>Haematopus ostralegus</i>							
Bontbekplevier	<i>Charadrius hiaticula</i>							
Goudplevier	<i>Pluvialis apricaria</i>							
Drieteenstrandloper	<i>Calidris alba</i>				x			
Gestreepte strandloper	<i>Calidris melanotos</i>							
Paarse strandloper	<i>Calidris maritima</i>							
Kanoet	<i>Calidris canutus</i>							
Bonte strandloper	<i>Calidris alpina</i>							
Regenwulp	<i>Numenius phaeopus</i>							
Tureluur	<i>Tringa totanus</i>							
Steenloper	<i>Arenaria interpres</i>							
Rosse franjepoot	<i>Phalaropus fulicarius</i>							
Grauwe franjepoot	<i>Phalaropus lobatus</i>							
Middelste jager	<i>Stercorarius pomarinus</i>					x		
Kleine jager	<i>Stercorarius parasiticus</i>				x	x	x	x

Kleinste jager	<i>Stercorarius longicaudus</i>						x	x
Grote jager	<i>Stercorarius skua</i>							x
Vorkstaartmeeuw	<i>Xema sabini</i>							
Kokmeeuw	<i>Larus ridibundus</i>							
Stormmeeuw	<i>Larus canus</i>							
Grote Burgemeester	<i>Larus hyperboreus</i>	x	x	x	x	x	x	x
Kleine Burgemeester	<i>Larus glaucoides</i>							
Zilvermeeuw	<i>Larus argentatus</i>							
Kleine mantelmeeuw	<i>Larus fuscus</i>							
Grote mantelmeeuw	<i>Larus marinus</i>							
Drieteenmeeuw	<i>Rissa tridactyla</i>	x	x	x	x	x	x	x
Rossmeeuw	<i>Rhodostethia rosea</i>							
Ivoormeeuw	<i>Pagophila eburnea</i>							
Noordse stern	<i>Sterna paradisaea</i>	x	x		x	x	x	x
Zeekoet	<i>Uria aalge</i>							
Dikbekzeekoet	<i>Uria lomvia</i>	x	x	x	x	x	x	x
Zwarte zeekoet ssp mandtii	<i>Cepphus grylle mandtii</i>	x	x	x	x	x	x	x
Kleine alk	<i>Alle alle</i>		x	x		x	x	x
Papegaaiduiker	<i>Fratercula arctica</i>	x	x	x		x	x	
Boerenzwaluw	<i>Hirundo rustica</i>							
Witte Kwikstaart	<i>Motacilla alba</i>							
Graspieper	<i>Anthus pratensis</i>							
Tapuit	<i>Oenanthe oenanthe</i>							
Merel	<i>Turdus merula</i>							
Sneeuwgorst	<i>Plectrophenax nivalis</i>	x					x	x
Barmsijs	<i>Carduelis flammea</i>							
Ijsgors	<i>Calcarius lapponicus</i>							
Kramsvogel	<i>Turdus pilaris</i>							
Koperwiek	<i>Turdus iliacus</i>							
Keep	<i>Fringilla montifringilla</i>							
Giervalk	<i>Falco rusticolus</i>							



		Day						
Dutch	Latin	1	2	3	4	5	6	7
Walrus	<i>Odobenus rosmarus</i>		x	x	x	x		
Baardrob	<i>Erignathus barbatus</i>		x	x		x		
Ringelrob	<i>Phoca hispida</i>			x		x		
Zadelrob	<i>Pagophilus groenlandicus</i>			x		x		
Klapmuts	<i>Cystophora cristata</i>				x			
Gewone zeehond	<i>Phoca vitulina</i>		x	x		x	x	
Dwergvinvis	<i>Balaenoptera acutorostrata</i>		x	x	x	x		
Noordse vinvis	<i>Balaenoptera borealis</i>							
Blauwe vinvis	<i>Balaenopentera musculus</i>	x					x	

Gewone vinvis	<i>Balaenoptera physalus</i>							
Bultrug	<i>Megaptera novaeangliae</i>							
Groenlandse walvis	<i>Balaena mysticetus</i>							
Potvis	<i>Physeter macrocephalus</i>							
Narwal	<i>Monodon monoceros</i>							
Butskop	<i>Hyperoodon ampullatus</i>							
Zwaardwalvis (Orka)	<i>Orcinus orca</i>							
Witsnuitdolfijn	<i>Lagenorhynchus albirostris</i>							
Beloega	<i>Dephinapterus leucas</i>							
Ijsbeer	<i>Ursus maritimus</i>			x		x		
Poolvos	<i>Alopex lagopus</i>							x
Spitsbergen Rendier	<i>Rangifer tarandus platyrhynchus</i>						x	x
Oostelijke veldmuis	<i>Microtus rossiaemeridionalis</i>							
Aardmuis	<i>Microtus agrestis</i>							



PHOTOGRAPHY CONTEST 2017

Your chance to win a € 1000 gift voucher for your next polar adventure.

EVERYONE KNOWS A PICTURE IS WORTH A THOUSAND WORDS, BUT DID YOU KNOW THAT YOUR PHOTOS MIGHT NOW ALSO BE WORTH A **€ 1000 GIFT VOUCHER**?

Share your experience!

Did you catch a rare seabird on the fly? Do you have a panorama of the Northern Lights filling the sky? Did you get up close and personal with a penguin? Did you capture a look of awe or wonder on a fellow passenger's face?

If you've been a passenger on any one of our past voyages we want to see your pictures.

You're free to send in as many pictures as you wish. The best pictures are the ones that capture what it's like to take one of our special expeditions to the remote and beautiful ends of the Earth.



PRIZES



€ 1000

GIFT VOUCHER

for Oceanwide Expeditions



€ 500 gift voucher

for Oceanwide Expeditions



€ 250 gift voucher

for Oceanwide Expeditions

UPLOAD YOUR PHOTO AT

WWW.OCEANWIDE-EXPEDITIONS.COM/GALLERY

The size of your photo should be between 2MB and 8MB. Our lucky winners will be contacted by e-mail and Facebook by January 15, 2018.

Read the terms and conditions of the contest on www.oceanwide-expeditions.com/page/contest-terms



Kayaking the Waters of Antarctica The weather changes so dramatically down here that you simply cannot say, "this looks like a great day" if it is one – rather you must live in the moment and perhaps a more appropriate phrase might be, "this looks like a great moment"! After enduring Force 8 winds on the Beaufort Wind Scale the Ortelius (our home during this Antarctica cruise) pulled into calm waters at Georges Point affording us our first close look at the breathtaking scenery (icebergs, glaciers and mountainous

TRAVEL WRITING COMPETITION 2017

Your chance to win a € 1000 gift voucher for your next polar adventure.

FANCY YOURSELF AS A TRAVEL WRITER? ENTER OUR ANNUAL TRAVEL WRITING COMPETITION AND YOU JUST MIGHT WIN YOURSELF A **€ 1000 GIFT VOUCHER** FOR YOUR NEXT POLAR ADVENTURE.

Write about your experience!

What was it like to camp out under the Antarctic sky? Was it scary when you encountered a polar bear? Was this your first cruise and were you nervous about crossing open waters?

After all, how your expedition made you feel is what you're going to carry with you for the rest of your life. If you share your experience you just might win yourself a € 1000 gift voucher for your next polar adventure.

Here's what you need to do:

1. Write a post (600 – 1200 words) in Dutch, English, or German about what excited you the most on your Oceanwide Expeditions cruise. The topic is entirely up to you.
2. Make sure you add tiles and subtitles to the story.
3. Create a hyperlink or two inside of your post that links back to the particular trip you took as found on our website. The link could connect to the ship's page, the trip itinerary, the particular destination's page, or perhaps a page related to one of the activities you enjoyed.
4. Add 3 to 5 pictures (they should be 2 MB minimum in size, in landscape format and attached separately when you decide to send your entry to us).
5. Post it online and send us the URL where your story is published. **OR** send your post to us at marketing@oceanwide-expeditions.com. Either way, make sure you include your full name and e-mail address.
6. **Spread the word!**



PRIZES

1st **€ 1000**
GIFT VOUCHER
for Oceanwide Expeditions

2nd **€ 500 gift voucher**
for Oceanwide Expeditions

3rd **€ 250 gift voucher**
for Oceanwide Expeditions

ENTRIES CLOSE DECEMBER 31

Our lucky winners will be contacted by e-mail and Facebook by January 15, 2018

Read the full terms and conditions on oceanwide-expeditions.com/page/contest-terms

Michael Ginzburg – Expedition Leader



Since his first scientific project at the Alfred Wegener Institute for Polar and Marine Research (Germany) at age 17, Michael focused his work on polar algae and sea ice. Field work became his passion and even turned into an addiction when he stepped on Svalbard aged 20. Michael instantly fell in love with sea ice, and ever since, he has worked on the evolution and ecology of diatoms of the Arctic and Antarctic. Michael has studied both marine and polar biology as well as participated in over a dozen scientific expeditions with durations of up to four months.

Having travelled all seven continents, it was only a matter of time before Michael began sharing his passion for nature in photography and publications. Today, Michael is leading expeditions and working as a photojournalist throughout the world. In 2016, Michael accepted a teaching position for photojournalism as well as the position of the editor in chief for The Explorer's Magazine.

Sebastian Arrebola – Expedition Guide



English: Sebastian is from Buenos Aires, Argentina. He holds a tourism degree and has completed a one-year mountain guide training course, climbing in regions like Mendoza, Bariloche, and Tierra del Fuego. In 2000, he moved to Ushuaia and became a tour guide. From 2002, he lived in England for almost two years to follow various courses of the Royal Yachting Association.

Sebastian took his specialism in polar tourism and natural history on a first trip to Antarctica on board a 36-ft sail boat, where he developed ice-navigation skills and came to appreciate the polar environment. He has since led several expedition cruises down the very south. Since

2008, he also ventures north into the Canadian Arctic, through the Northwest Passage, and to Svalbard.

Sebastian has been an invited speaker on Antarctic topics at international meetings and public events. He has published in magazines like The Great Southern Route, Superyacht Times, and Boat International and co-authored “ANTARCTICA, DISCOVERING THE LAST CONTINENT”. He speaks Spanish and English.

Dr. Lynn Woodworth – Guide and Lecturer



Lynn comes from the mountains and lakes of western Canada, where she found her love for wilderness and cold water. She started travelling at 17 and eventually settled in Australia, where she completed two biology degrees, including a PhD in Conservation Genetics, which examined minimum viable population size in wildlife.

Resuming travel after academia, she abandoned her motorcycle in Argentina to sail to the Antarctic Peninsula. Hooked! She has been working in the Polar Regions ever since. Up north, she has taken ships to arctic Canada, Iceland, Greenland, Svalbard, Russia, and the North Pole. Down south, she is well-familiar with the Falklands, South Georgia, and the Antarctic Peninsula but will swap for the remote Ross Sea any time.

Lynn stopped counting polar trips at somewhere over 135 voyages and 17 different vessels. She has held most ship-based roles including lecturer, guide, zodiac driver, Assistant Expedition Leader, and Expedition Leader, and she has also worked on shore as Operations Manager.

She has co-authored two books on Antarctica: "Antarctica The Complete Story", published on three continents, and "The Blue Continent" in 17 languages and counting. Lynn has recently moved to Tasmania, where she is as close to Antarctica as she can get and still be in Australia.

Alexander Romanovskiy – Guide and Lecturer



Alexander (Sascha) originates from Saint-Peters-burg, the northern capital of Russia. Born in 1981, he graduated from boarding school before entering Saint-Petersburg State University, where he studied physical and regional geography, ecology, and international tourism. His PhD research at Herzen State Pedagogical University focused on geoecology.

In 2011, Alexander decided to pause his scientific career and do something completely different. He homed in on tourism and kicked in the door to the world: as trekking guide in the Fann mountains (Tajikistan); as guesthouse staff at the Novolazarevskaya scientific station (Queen Maud Land, Antarctica). Since 2012, he lives for most of the year in Svalbard, guiding in the ghost town of Pyramiden. In 2016, Alexander turned over a yet another page in his colourful career, now as a naturalist guide on cruise ships around Svalbard and Antarctica.

Each year, Alexander dedicates three to four months to his main passion – globetrotting. No public transport, no hotels, only hitch-hiking and staying with locals or sleeping in a tent. This way, he has already set foot in almost all Soviet republics, the Middle East, Asia, and South America. Luckily, Earth is not flat, and there is no end! Our world is big, friendly, and certainly interesting to explore!

Dr. Frigga Kruse – Guide and Lecturer



Frigga is a German archaeologist and geologist. When she traveled to the South Shetland Islands and the Antarctic Peninsula in 1999, there was nothing to suggest that the Polar Regions would become her place of work. In 2008, she first visited Svalbard to carry out archaeological fieldwork as part of her PhD research on the British mining history of the archipelago – she has since become a regular. Her current research focuses on 420 years of natural-resource exploitation (whaling, sealing, fur-hunting, and mining) in and around Svalbard and Jan Mayen and the lasting impact on Arctic marine and terrestrial ecosystems. Since 2015, she has been sharing her broad polar knowledge and a knack for story-telling as a guide and lecturer on Oceanwide's expedition cruises. You can approach her in German, English, and Dutch, and she is also teaching herself Norwegian.

Karen Mulders – Guide and Lecturer



At home in the Netherlands, I switched from academia to an administrative job and substitute teaching in primary schools. This now allows me to fit in more travelling and guiding around the globe. Children and grown-ups alike are so eager to learn, especially if stories, pictures, and local know-how are involved. I love it!

I hold a Bachelor's degree in Pedagogy and Linguistics as well as a Master's degree in Slavistics, majoring in Russian and Ant/Arctic Studies. As a PhD student, I investigated the medieval and early modern settlement history of the Barents Sea coast, which nowadays is home to Saami, Nenets, Russians, and Norwegians.

I participated in a biohydrological expedition to the Pechora delta in 2001 and in one leg of the circumnavigation by the SV *Vagabond* in 2003. Since then, I zig-zagged between Russia, Mongolia, China, Peru, South Africa, Senegal, Iceland... eventually deciding to return to my first love: the Polar Regions. I have discovered Antarctica for myself and participated in the Dutch SEES expedition to Edgeøya (Svalbard) in 2015. In 2016, I finally jumped on board my first Oceanwide expedition cruise.

Wilson Cheung - Guide and Lecturer



Wilson is an all round guide. He first visited the Antarctic continent in 2007 and has a special interest in mankind's relationship with the landscape and geography all around us.

Wilson (Wai-Yin) Cheung's was born and raised in former British Hong Kong. His works and studies allow him to roam the globe. After encountering a number of pivotal moments in the wilderness, he strongly believes that there is deep wisdom in nature. The key to uncovering the wilderness is curiosity, which is essential to growth. Couch-surfer, backpacker, dreamer, kayaker, caver, mountaineer, adventurer, climber, hitchhiker, skier, surfer, traveler, photographer and writer; Wilson is all of these.

Since 2011, He work as a mountain guide, ski guide and expedition guide in polar region over 400 field days. The most amazing polar experience for Wilson is managing a Emperor Penguin Camp at Gould Bay, the south of Weddell sea ice, for international visitors. In each Antarctic season, he spend over 4 months in Antarctic continent and peninsular region. Antarctic almost become his home..... with his tiny tent and sleeping bag as a shelter.

Wilson studied "M.A.Transcultural European Outdoor Studies" in Europe. Cross-cultural physiology is his other profession. He keen to learn different cultural interpretation of landscape and environment, especially in the polar region. Now, he is preparing a PhD research about cultural interpretation of Antarctica. So, please spend some time to chat with Wilson. He will show you how to different culture to read Antarctica during your trip.

Besides his guiding jobs, he is running one non-profit making organization, Ecobus (<http://ecobus.org.hk/>), for reconnect the relationship between human and nature. In order to facilitate individual interaction with nature and enhance the environmental sense of belonging, Ecobus applied own eco-route-cycle philosophy, Enjoy-Care-Share during delivering a wide range of outdoor activities for community.

Sara Jenner – Guide and Lecturer



Sara was born in England and inherited a love for travel from her parents. She and her family split their time between the UK and the South of Spain. When she was 10, she traded in her favourite pink bicycle for money to start her travel fund. Every birthday and Christmas she added a little more, and at 18, she realised her dream of travelling around Australia. She learnt to scuba dive on the Great Barrier Reef – and that was it! Travel addiction confirmed!

Sara has traveled the globe in search of wild and remote places, and has spent many months volunteering on wildlife conservation projects in a bid to help some of our most iconic and endangered species.

As a keen photographer, she is never happier than when she is in the back of a safari jeep or bobbing along out at sea in search of wildlife. Sara's love of wildlife and the great outdoors has taken her to all seven continents and she has travelled extensively in the Polar Regions including the Antarctic Peninsula, Svalbard, Greenland, Iceland, Baffin Island, Alaska, and the Canadian High Arctic. Returning to the UK Sara used this knowledge to work in the travel industry as a polar specialist for several years but, of course the travel bug bit again and Sara now joins us on board in Spitsberbergen.

Henrik Enckell - Dive Master



Henrik is an experienced dive instructor and rebreather instructor trainer.

He was one of the first dive masters to bring tourists diving in Antarctica.

As instructor with six agencies (PADI, NAUI, IANTD, RAID, TDI and IART) he teaches all levels of recreational and technical diving up to Advanced Trimix CCR (Closed Circuit Rebreather) through his own company.

He's been diving for more than 20 years and teaching the last 16, specializing in technical CCR systems that enable close encounters with wildlife due to the absence of exhaled bubbles.

He is regularly involved in deep wreck expeditions all over the world. Some of the interesting wrecks he has visited are the WW2 disasters *General von Steuben* and *Wilhelm Gustloff* in the Baltic and *HMS Victoria* ("the vertical wreck") at 145m/475 feet depth off the Lebanese coast.

He has also led dive trips in the Antarctic and Arctic regions during 10+ years, guiding divers in these remote, challenging and many times undived waters.

Henrik has a M.Sc. degree in Electrical Engineering and a military background having served in peace keeping and peace enforcing missions in the Middle East and former Yugoslavia. He recently moved back to Sweden after living in Tokyo with his wife, three daughters aged 14, 11 and 9 and his newborn son.

Michael Green – dive guide

My name is Michael Green. I came to Antarctica on the Plancius two years ago and had a great trip. My diving started in 1990 with Bradford BSAC in Yorkshire. Our club had 300 members and I was Diving officer. Our divers went all over the world on some great trips but we're always safe.

I enjoy being around like minded people who are having a good time undertaking a shared passion. On a dive trip you spend only 10% of the time in the water so usually the rest of the time is spent getting to know one another having good times.

I look forward to meeting you all.



Tanja Bayer - Dive Guide



Tanja is at home in Oberursel, which is near Frankfurt / Main in Germany.

She is diving since 1990 and has more than 4200 dives.

In Oberursel she is running her own Diving Center „TaWo Diving“ since 1996. As a Master Instructor and Course Director she teaches Diving and also trains Diving Instructors.

Her „second“ profession is being a Doctor in General Practice, Accident & Emergency and Diving Medicine.

She has been working as a ships doctor since 2009 in Antarctica and since 2015 also in the Arctic with Oceanwide Expeditions.

As a Dive Guide and Diving Expedition Leader she takes divers all around the world.

Asked for her favourite dive sites, she mentions „Planeau Bay“ in Antarctica.

„Cold water diving is really something special and challenging. You have to be experienced and always aware of hypothermia. But it is a great feeling to touch an iceberg or to see all this colorful animals surviving in this harsh regions.“

Bram Hulst – Ship's Physician



I am Bram, that's short for Abraham. I'm Dutch, but I also speak English and Spanish. I have studied in Leuven (Belgium) and graduated medical school in 2013. Since then I have been in training to become an anaesthesiologist. My secondary job is a teacher of physiology and pharmacology at the University of Amsterdam. However, for the moment, my main occupation is my PhD-research on perioperative glucose regulation and diabetes treatment.

I live and work in Amsterdam for the moment but I love travelling and working abroad. I've visited all continents quite extensively, but until now I had not yet been to the polar regions. While I lived in South America, I visited Tierra del Fuego and Ushuaia, and after that, wanted to see (Ant)artica even more. So: here I am! I am really excited to be here and enjoy this with all of you.

Stay safe, keep well, and enjoy!



Captain Alexey Nazarov

and his international crew

of 49

Hotel Manager:	Sebastian Duma	[Romania]
Assist. Hotel Manager:	Sava Savov	[Bulgaria]
Head Chef:	Gabor Kiss	[Hungary]
Sous Chef:	Ivan Yuriychuk	[Ukraine]
Ship's Physician:	Bram Hulst	[Netherlands]
Expedition Leader:	Michael Ginzburg	[Germany/Russia]
Asst Expedition Leader:	Sebastian Arrebola	[Argentina]
Expedition Guide:	Lynn Woodworth	[Canada/Australia]
Expedition Guide:	Aleksandr Romanovski	[Russia/Norway]
Expedition Guide:	Frigga Kruse	[Germany]
Expedition Guide:	Karen Mulders	[Netherlands]
Expedition Guide:	Wilson Cheung	[Hong Kong]
Expedition Guide	Sara Jenner	[United Kingdom]
Dive Master	Henrik Enckell	[Sweden]
Dive Guide	Michael Green	[United Kingdom]
Dive Guide	Tanja Bayer	[Germany]
Dive Guide	Yoli Bosinger	[Switzerland]

Welcome you on Board!



OCEANWIDE

EXPEDITIONS

North Spitsbergen Polar Bear Special Embarkation in Longyearbyen Thursday 22 June 2017

- 1600 **Welcome on board!** Your luggage will be delivered to your cabin as soon as possible. Check to make sure you are not missing anything. Feel free to explore around the ship.
- ~1700 **Mandatory Safety and Lifeboat Drill** in the Lounge (Deck 5). **ALL PASSENGERS** are required to attend this very important safety briefing.
- This will be followed by an **Introduction to the ship** by our Hotel Manager Sebastian Duma and Expedition Leader Michael Ginzburg in the Lounge (Deck 5).
- ~1800 **Plancius departs Longyearbyen.** The foredeck and aft deck are closed while the crew are handling the mooring lines.
- 1900 **Captain's Cocktails!** Captain Alexey Nazarov and Expedition Leader Michael Ginzburg invite you to join them for a **Welcome Drink** in the Lounge, where you will meet your Captain and the Expedition Team.
- 1930 **Dinner** is served in the Dining Room located on Deck 3 behind reception. Bon appétit!

This afternoon we will sail into open waters and the ship may roll. Please ensure you secure all of your valuables (cameras, computers, etc.) in your cabin to prevent any accidents. Use the handrails when you move around the ship. Keep at least one hand free to hold on to the ship.



North Spitsbergen - Polar Bear Special

Raudfjord

Friday 23 June 2017

Today we will be exploring the Northwest side of Spitsbergen Island. The area is stunning – high mountain peaks, glaciers, and the potential for a great variety of wildlife.

- | | |
|-------|--|
| 0730 | Wake-up call. |
| 0800 | Breakfast buffet is available for one hour in the dining room. |
| ~0900 | Please join Michael in the Lounge for a Mandatory Zodiac briefing . |
| ~0940 | After breakfast we will call you by deck number to the boot room (Deck 3 front) to collect your rubber boots . It's a good idea to bring you thick socks with you when you try the boots. |
| ~1100 | Please join Michael in the Lounge for a mandatory AECO and Polar Bear Safety Briefing . |
| 1230 | Lunch is served in the Dining Room. |
| TBA | In the afternoon we intend to explore the scenic Raudfjord in search of Arctic Wildlife. Please join us in the search and remember to be quiet when we are close to wildlife. |
| 1830 | Come and join Michael and the Expedition team in the Lounge for a Daily Recap where we look back on today and discuss our plans for tomorrow. |
| 1900 | Dinner is served in the Dining Room. Bon appétit. |

TBA* = to be announced



North Spitsbergen - Polar Bear Special

Sea Ice Edge

Saturday 24 June 2017

Today we will cruise along the **sea-ice edge in the North of Svalbard**. Enjoy the journey through the ice and help us with the search for Arctic wildlife. Depending on conditions we might offer a lecture. Please listen for announcements.

0730 Wake-up call.

0800 **Breakfast** buffet is available for one hour in the dining room

1230 **Lunch** is served in the Dining Room.

1830 Please come the Lounge for our **Daily Recap** and hear about our plans for tomorrow.

1900 Your **Dinner** is served in the dining room. Enjoy!



North Spitsbergen - Polar Bear Special Smeerenburg & Magdalenefjord

Sunday 25 June 2017

- 0700 Wake-up call.
- 0730 **Breakfast** buffet is available for one hour in the dining room
- 0830 Please come to the lounge for a pre-landing briefing. Afterwards we would like to take you ashore at **Smeerenburg**, a Dutch whaling settlement from the 17th century where we will be able to see the remains of old blubber ovens. Sometimes walrus are hauled out on the beach. Please remember to be quite when we approach the walrus.
- 1230 **Lunch** is served in the Dining Room.
- 1430 Please come to the lounge for a briefing about our planned Zodiac cruise in **Magdalenefjord**. This is a particularly scenic fjord with steep sided mountains which reach up to 900 metres on the northern side of the fjord.
- 1830 Please come the Lounge for our **Daily Recap** and hear about our plans for tomorrow.
- 1900 Your **Dinner** is served in the dining room. Enjoy!



North Spitsbergen - Polar Bear Special

Sea Ice Edge

Monday 26 June 2017

Today we will come back along the **sea-ice edge in the North of Svalbard**. Enjoy the journey through the ice and help us with the search for Arctic wildlife. Depending on conditions we might offer a lecture. Please listen for announcements.

0730 Wake-up call.

0800 **Breakfast** buffet is available for one hour in the dining room

1230 **Lunch** is served in the Dining Room.

1800 Please come the Lounge for our **Daily Recap** and our plans for tomorrow.

1830 A **Special Arctic Dinner** is served for you on the back deck behind the dining room. Please dress warmly, bring your dancing shoes and have fun!



North Spitsbergen - Polar Bear Special

Ny London & 14th of July Glacier

Tuesday 27 June 2017

- 0700 Wake-up call.
- 0730 **Breakfast** buffet is available for one hour in the dining room
- 0830 Please come to the lounge for a pre-landing briefing. Afterwards we would like to take you ashore at **Ny London** on **Blomstrandhalføya**. This is the location of a failed marble mining operation and rusting machinery contrasts with tundra plants, birds and sometimes reindeer.
- 1230 **Lunch** is served in the Dining Room.
- 1400 Please come to the lounge for a pre-landing briefing about **14th of July Bay**. This place offers some wonderful Arctic flora, bird cliffs and opportunity to see some reindeer.
- 1830 Please come the Lounge for our **Daily Recap** and hear about our plans for tomorrow.
- 1900 Your **Dinner** is served in the dining room. Enjoy!



North Spitsbergen - Polar Bear Special

Gjertsenodden & Poolepynten

Wednesday 28 June 2017

- 0715 Wake-up call.
- 07:30 **Breakfast** buffet is available for one hour in the dining room
- 08:30 Please join Michael in the Lounge for a pre-landing briefing before we go ashore at **Gjertsenodden in the beautiful St. Jonsfjord**. Here we hope to offer an energetic hike to a viewpoint on top of a glacier moraine, a medium walk and a leisurely stroll along the coastline and onto the tundra.
- 1230 **Lunch** is served in the Dining Room.
- ~1330 After lunch it is time for the **settlement of your shipboard accounts**: Sebastian and Sava will call you by deck number. This will take some time, so we ask you to please be patient.
- ~1500 This afternoon we plan to go ashore in **Poolepynten**. This location is a known haul-out site (resting ground) for **walrus** when they are not busy feeding at sea. Please remember to be quite while with the walruses and listen to the instructions of the guides.
- 1830 **Captains Cocktails**. Please join Michael and the Expedition team in the Lounge as we toast a successful voyage with Captain Alexey.
- 1900 A **farewell dinner** will be served in the Dining Room. Bon appétit!



North Spitsbergen - Polar Bear Special

Disembarkation in Longyearbyen

Thursday 29 June 2017

Please place your **large check-in luggage outside your cabin before 0700**. Remember to keep your waterproofs handy! Please **return your keys to Reception** when you go to breakfast!

- 0700 Your **check-in luggage** has to be outside the cabin door
- 0700 **Wake up call.** The bridge will be closed this morning.
- 0730 The **breakfast** buffet is available for one hour in the dining room
- ~0815 We will start to shuttle you with the Zodiacs to the pier. This is a dry landing onto a jetty. **Please wear your waterproofs and your lifejacket!**
- ~0900
 - Busses will be on the pier ready to ferry you to the center of town. **Please identify your luggage on the pier!** We can help you load it onto the luggage truck. (You will meet the luggage truck again at the airport where you can take your luggage from the truck to the check-in counter.)
 - **If you are staying in town overnight** please take your luggage with you on the bus, **don't put it on the truck!**
- 1300 Busses will transport you from the town center to the Airport to meet your plane. They will pick you up from where you were dropped off.

On behalf of Captain Nazarov, his officers and crew, Michael and the Expedition team and Sebastian, Sava and the hotel department, we would like to thank you for travelling with us onboard Plancius and we wish you a pleasant and safe onward journey.