

SHIP DETAILS

S/V NOORDERLICHT



ABOUT THE SHIP

The 'Noorderlicht' was originally built in 1910 in Flensburg, Germany as a three-masted schooner. For most of her existence she served as a light-vessel on the Baltic. In 1991 the present owners purchased the hull and re-rigged and refitted her thoroughly, under the rules of "Register Holland".

The 'Noorderlicht' now has a well-balanced two-masted schooner rig and is capable of sailing the seven seas. The qualified captains have a great experience of the oceans. Together with the rest of the crew, they will do everything possible to ensure that you have a wonderful and unforgettable journey.

Flexibility is paramount for expedition cruises. Willingness to compromise on comfort is a basic requirement on board of a historic traditional sailing vessel.

- Ice class: The Noorderlicht has no ice class. She was anchored year around near Flensburg (Germany). Due to heavy ice conditions in the winter time, the bow of the Noorderlicht was strengthened.

- The vessel is not an ice breaker but has a strengthened bow
- The 'Noorderlicht' provides accommodation for 20 travelers in small twin shared inside cabins
- All cabins have upper and lower berths, a cupboard and wash basin with hot and cold water. Shared shower (4) and toilet (5) facilities are conveniently located. All cabins have a small hatch in the ceiling which vary in size, except cabin 6 which has a small, locked porthole in the ceiling but ventilation slots in the door. On occasion and depending on weather situation those hatches will be opened by the crew to allow fresh air ventilation of the complete lower deck (including cabin 6) while passengers go ashore.

SPECIFICATIONS

Registered: The Netherlands
Length: 46 meters
Breadth: 6.5 meters
Draft: 3.2 meters
Ice class: Strengthened bow
Displacement: 300 tons
Propulsion: 360 hp diesel
Average cruising speed: 6 knots
Passengers: 20 in 10 cabins
Crew, guides: 4 / 1
Rerigged and refitted in 1991



FACILITIES & DECK PLAN SEE NEXT PAGE



Dining



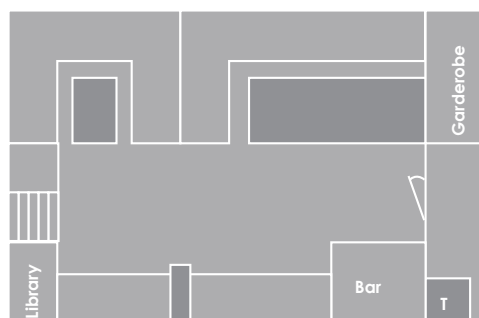
Bar



Deck



Twin cabin



DECKPLAN

 twin shared inside



upper and
lower berth

 Toilet

 Shower

CONTACT & BOOKING INFORMATION

Oceanwide Expeditions | Head Office

Visserijkade 5 • 4382 ZA Vlissingen
The Netherlands

T +31 (0) 118 410 410 F +31 (0) 118 410 417

E info@oceanwide-expeditions.com

Oceanwide Expeditions | USA & Canada Office

14950 Heathrow Forest Parkway, Suite 560
Houston, TX 77032 • USA

T +1 800 453 7245 or +1 281 741 2372

F +1 281 749 8220 E usa@oceanwide-expeditions.com