



OCEANWIDE
EXPEDITIONS

ANTARCTIC PENINSULA

on board
m/v Ortelius
06-16 December 2017



M/V *Ortelius* was named after the Dutch cartographer Abraham Ortelius (1527-1598) who published the first modern world atlas, the *Theatrum Orbis Terrarum* (Theatre of the World) in 1570. MV *Ortelius* was built in Gdynia, Poland, as a research vessel for the Russian Academy of Science and was named *Marina Svetaeva*. In 2011 she was purchased by Oceanwide Expeditions. The vessel was re-flagged and renamed *Ortelius*. Now the ship is sailing as a 125-passenger vessel. *Ortelius* is 91 m long, 17,6 m wide and has a maximum draft of 5,80 m, with an Ice Strength rating of UL1/1A, top speed of 12 knots and one diesel engine generating 3200 kW.



Captain Mika Appel and his international crew of 47

including

First Officer:	Toni Salo	[Finland]
Second Officer:	Franziska Braas	[Germany]
Third Officer:	Luis Oroceo	[Philippines]
Chief Engineer:	Guntis Dizbite	[Latvia]
Hotel Manager:	Dejan Nikolic	[Serbia]
Assist. Hotel Manager:	Sava Savov	[Bulgaria]
Head Chef:	Khabir Moraes	[India]
Sous Chef:	Richard Arokiasamy	[Malaysia]
Ship's Physician:	Lauke Bisschops	[The Netherlands]

and

Expedition Leader:	Sebastian Arrebola	[Argentina]
Assist. Expedition Leader:	Arjen Drost	[The Netherlands]
Expedition Guide:	Bill Smith	[Scotland]
Expedition Guide:	Jerry Zhao	[China]
Expedition Guide:	Lynn Woodworth	[Canada]
Expedition Guide:	Benjamin Giunchi	[Argentina]
Expedition Guide:	Pete Gwatkin	[Scotland]
Expedition Guide:	Ingo Heidbrink	[Germany]

Welcome you on board!

Day 1 – Wednesday 06 December 2017

Embarkation, Ushuaia

GPS position at 0800: 54°48.6'S, 068°17'W

Air Temp: 6°C Sea Temp: 10°C Wind: SW 3 knots

We gathered from all corners of the globe, arriving in Ushuaia, the Argentine city at The End of the World, ready to begin our adventure. The day, even though it was high summer, was damp, windy and cool, so it was good to board *Ortelius*, our new home for the next 11 days. We were greeted by DJ and Sava, the Hotel Manager and Assistant Manager, and shown to our cabins by crew we would get to know over the coming days. After a short time to settle in, Sebastian (Seba), our Expedition Leader, invited us to the Lecture Room on deck 3, where we had a mandatory safety briefing given by Luis, the Third Officer. That was immediately followed by seven short and one long blast on the ship's alarm system, and we gathered our big orange lifejackets and practiced our mustering in the Bar, on deck 6. We were all accounted for and lead to the lifeboats on deck 7, then, practice over, we scattered again, to our cabins and the outer decks.

We threw the lines and left the dock, sailing down the Beagle Channel with accompanying gulls flying around us. As Ushuaia and the surrounding mountains disappeared into the distance, the rolling hills of Tierra del Fuego spread down either side of the channel, with only occasional small Estancias passing by as we sailed. Bird life increased, with cormorants and Cape Petrels flying by.

Once we were under way, we were invited to the bar, where DJ explained how the ship worked, and we learned the practical side of life on the ship. This was followed by a welcome by our Captain, Mika Appel, and a toast or two with champagne and orange juice. Seba and the Expedition Team then fully introduced themselves, and we met our Expedition Doctor, Lauke.

Our first dinner was noisy and entertaining, as we introduced ourselves to strangers who would become friends over the course of the journey. After dinner, most of us retired to unpack and catch up on sleep, some hoping that our passing into the Drake Passage would be gentle and uneventful, some hoping for a more eventful Drake crossing. A few more hardy and rested souls went up to the bar, to get to know Rolando, our friendly bartender, and step outside to watch the South American countryside pass by.



Our first dinner was noisy and entertaining, as we introduced ourselves to strangers who would become friends over the course of the journey. After dinner, most of us retired to unpack and catch up on sleep, some hoping that our passing into the Drake Passage would be gentle and uneventful, some hoping for a more eventful Drake crossing. A few more hardy and rested souls went up to the bar, to get to know Rolando, our friendly bartender, and step outside to watch the South American countryside pass by.

Day 2 – Thursday 07 December, 2017

At Sea in the Drake Passage

GPS position at 0800: 56°27S, 065°52W

Air Temp: 6°C Sea Temp: 10°C Wind: W 5 knots

The first full day onboard *Ortelius* welcomed passengers and crew with moderate winds – at least in terms of the Drake Passage. Some remaining swell from an earlier low-pressure system (approx. 4m waves) reminded everybody that it might be summer in the region, but that the Drake Passage is one of the most challenging parts of the global oceans a ship can navigate. In short, average to good conditions for the crossing of the Drake Passage allowed us to enjoy breakfast, explore the ship, introduce ourselves to fellow shipmates, and relax from a long trip to reach the *Ortelius* in Ushuaia.



At 11:00 Lynn started the lecture series of the trip with her talk about 'Seabirds and the Southern Ocean', which was the most appropriate topic for today's morning lecture as now the birds following *Ortelius* were no longer simply large (put in color here..) birds, but became immediately transformed into Giant Petrel, Wandering Albatross, Cape Petrel and the like.

Now with the birds having their proper names, watching them from the open decks became even more interesting as the swell decreased substantially and moving along the ship became easier (or do sea-legs grow so quickly?).

The Furious Fifties, from 50 to 60 degree south latitude, dreaded by all mariners of the past are presenting themselves today from their good sides, by no means comparable to the conditions the full-rigged ship *Susanna* had experienced in 1905 when she needed 99 days just to round Cap Horn or the conditions those ships experienced whose master's finally gave up sailing around the Horn and going all around the globe instead...

Lunch was followed by Arjen's highly informative talk on 'Nature Photography' which provided even the most seasoned photographer some tips never thought about before and the best method to make a penguin model for your photo-shoot (simply keep your distance and observe patiently, they will provide a good motive - maybe not the one you were hoping for, but an extremely good one, as they are models by nature...) After another hour or so of bird watching, relaxing, coffee-drinking and chatting with the staff, Expedition Leader Sebastian gave his lecture on the 'Geography of Antarctica', successfully introducing a whole continent in less than 60 minutes.



Prior to dinner all guests were invited to the first recap session at the Bar for discussing the day's events with the expedition team and learning about the program for the days to come. Ok, it was a sea day and thus there wasn't too much on the agenda of today's recap, but it will become one of the most important formats over the next couple of days. All staff are definitely prepared to handle your questions and if time might be too short, discussions can always be continued after dinner in the Bar.

Altogether, a quite calm day onboard *Ortelius*, but a perfect day to prepare for Antarctica itself.

Day 3 – Friday 08 December 2017

At Sea in the Drake Passage

GPS position at 0800: 60°42S, 064°26W

Air Temp: 2°C Sea Temp: 2°C Wind: W 6 knots

As everybody started to get used to the Drake Passage, the second night on board the *Ortelius* was less bumpy than expected. Because of this, more people joined for breakfast and the social life on board began to improve.



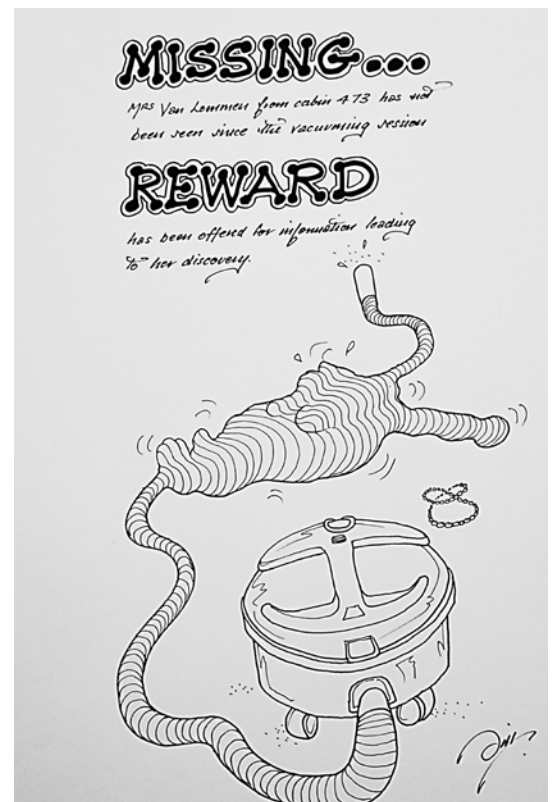
As this day was a full sea day again, the time was used to get all necessities done, before the action part of the adventure begins. We were supposed to receive our life jackets and Muck Boots, but that had to be delayed due to some friends who approached *Ortelius* to welcome us to these southern waters. Humpback and Fin whales gave a wonderful show and got the attention of all passengers and staff for almost an hour. Unfortunately, the IAATO briefing (International Association of Antarctica Tour Operators) had to be done, as it is a mandatory briefing. This was

followed by a zodiac safety briefing, to keep us safe and happy while on landings and cruises.

After a delicious lunch prepared by Khabir and his team, the time for camping preparation arrived. Ben & Jerry (not the ice-cream) were responsible for explaining in detail the longest activity scheduled for those who booked in advance, surprised faces immediately appear when they came up with the bivy bags and the potty toilet. With almost no time in between, Pete the kayak guide then did his part with kayaking, giving a really complete talk and explanation about the activity and all the gear that involves, so he could give suits to the group.

After 4 PM we had our first party of the voyage, the vacuum party! Calling deck by deck, Seba the EL, started the party in the bar. Between jokes, laughs and muffins that were brought by Rolando the time for Recap arrived. As every day, the expedition leader started by outlining the plan for the following day (if weather allows), followed by Bill and his demonstration of the snowshoes we will get to wear soon. That was not all for him, because he shared part of his vast knowledge and stories about whales, which was a good introduction for Lynn's recap who removed all doubts about the whales we saw during the day.

As the Drake Passage calmed further down over the day, we enjoyed the evening and gathered with chats in the bar.



Day 4 – Saturday 09 December 2017

Danco Island and Brown Station & Skontorp Cove

GPS position at 0800: 63°34S, 062°38W

Air Temp: 1°C Sea Temp: 1°C Wind: ENE 7 knots



Early morning during windy and overcast conditions *Ortelius* motored towards the planned landing site at Cuverville. Unfortunately an inspection through binoculars from the bridge showed masses of drift ice collected along the shore at the landing site. Given the conditions it was clearly plan B for landing destination...and *Ortelius* repositioned to Danco Island.

Zodiacs were loaded with 120 snowshoes and red marker poles and staff conducted an inspection of the landing zone. Fortunately there were no problems and passengers disembarked to be kitted out with snowshoes and then given the choice to either meander between the Gentoo penguin colonies lower down or follow Bill on a more strenuous hike uphill to the summit of the island. A large group chose the latter and a gaily coloured column of passengers slowly wound their way to the top. Once there, after photographing the superb views and antics of the nest building Gentoos, Bill encouraged the group to sit or lie down and enjoy 10 minutes of absolute polar silence.

The was an intensely aesthetic moment enjoyed by all.



During and after lunch *Ortelius* cruised through superb peninsula scenery of bergs, glaciers and looming mountains to anchor off the afternoon destination of Base Brown. Passengers were then split into two groups. One group landed and climbed to a high vantage point behind the station whilst others were given a zodiac cruise through brash ice into the berg and glacier studded Skontorp Cove. A visual feast as lenses trained on the beautiful assorted shapes and stunning backdrop....cameras clicked incessantly. The perfect day continued in the evening with superb conditions for the camping group who were ferried ashore after dinner. Happy passengers laughed and chattered in the bar late into the evening with everyone highly delighted at their first experience of Antarctica.



Day 5 – Sunday 10 December 2017

Neko Harbour and Orne Harbour

GPS position at 0800: 64°50S, 062°32W

Air Temp: 5°C Sea Temp: 2°C Wind: calm

It was a cloudy morning, but there was little or no wind, so conditions were good for an excursion. We landed at Neko Harbour, a small indentation in Andvord Bay named after an old whaling vessel which used



the little harbour for one season. Once ashore, we all began with the Gentoo penguins nesting down lower on the hillside. Quite a few of us followed Bill, who offered a snowshoe hike up to a high view point for anybody with the strength and energy to climb. There was an amazing view of the landscape from the higher reaches – at least for most of the time, when the fog stayed away. Most of us also got a short zodiac cruise along the coastline of

Neko Harbour either before or after landing. People enjoyed viewing this amazing ice- and seascape, as well as the Gentoo penguins from zodiacs. Although some passengers were tired from the camping previous night, they all thought it was worth the effort to push themselves a little, and take in the amazing Antarctic scenery.

In the afternoon, we had a zodiac cruise for everyone at Orne Harbour. The weather had gotten a little rougher than in the morning, but the enthusiasm of the passengers had not been cooled down. It was the first time in this voyage that we had seen Chinstrap penguins, hearty little birds that prefer to live on rocky cliffsides and scree slopes, in places inaccessible to us for landing. After cruising the Chinstrap shore, we drove deeper into Orne Harbour, and checked out the icebergs and sea ice which had been trapped at the back of the bay by the wind and current. The icebergs and ice foes were carried to the back of the bay, and the zodiacs also drifted with the ice in this amazing snowy scene.





Day 6 – Monday 11 December 2017

Lemaire Channel and Damoy Point & Dorian Bay

GPS position at 0800: 65°04S, 063°57W

Air Temp: 6°C Sea Temp: 1°C Wind: SW 2 knots

It was an early wake-up call from the Expedition Leader, who was on the Bridge at 06.30, inviting everyone to come up onto the outer decks and enjoy the beautiful surroundings. The ship was positioned at the northern opening of the Lemaire Channel, one of the most photographed places in Antarctica. Guarding the entrance like two sentinels was the twin peaks of Cape Renard and False Cape Renard, and beyond as far as the eye could see was ice chocking the 600m wide channel. With Captain Mika at the helm and the strength of the *Ortelius* (ice reinforced) hull at his command this was not a day for taking prisoners. The



ships cruise through this spectacular glaciated mountain range was truly incredible for many reasons. Firstly, many ships would have merely turned and run at the proposition of such a serious undertaking. Secondly, the glorious sunshine on the decks that warmed us down to single layers of clothing and beyond was, just perfect. The still clear water reflecting blue ice, hauled out Crabeater seals and steep sided glaciated mountains was truly a scene to take your breath away. Pushing the ice aside piece by piece *Ortelius* continued slowly forward, steadily making her way through the channel until eventually she broke free turning right towards our intended landing for the morning. However, it was soon clear to see from the Bridge that no landing could take place on Pleneau Island because of the vast amount of ice moving north in the strong current, putting us at risk of ice blocking our escape. An alternative ships cruise was possible and with the hotel staff supplying rum, hot chocolate and cookies out on deck, OTL24 was in a great shape. Going even further south in the ice towards our second possible landing site of the day (Petermann Island) was clearly out of the question and by mid-morning *Ortelius* was making her way back through the Lemaire channel towards Cape Renard.

After some quick thinking by the Expedition Leader our plan 'B' was to now sail towards Damoy Point and the possibility of a landing and kayaking in the afternoon. Luckily the weather stayed fair and after a good lunch the kayakers went off to do their activity away from the main landing area. Everyone else landed at the historic huts where Ingo was able to recount some of



the interesting historic stories surrounding the site. Bill led the long walk with the snow shoe group up to the top of the hill to be greeted by some fantastic views of the surrounding area. The remaining guides managed the Gentoo penguins and Weddell seals that were hauled out on the snow at the landing area and all the time the sun shone brightly down. Pete's kayakers were enjoying their third stellar kayaking experience a few miles away from the huts towards one of the glaciers.

By late afternoon everyone gathered at the landing area for the final part of the (optional) afternoon activities....



'The Polar Plunge'. Approximately 60 brave souls stripped down to their swimwear to baptise themselves in the frigid waters of Antarctica. Young and old ran in and ran out, a few lingered for pictures and some even managed a few swimming strokes however, for most it was a brief but rewarding encounter. Fresh towels were made available on the shore for all those crazy enough to jump into water (only low single digit degrees C above freezing) madness, but well done one and all on a truly fantastic end to an incredible day in Antarctica.

Day 7 – Tuesday 12 December 2017

Port Lockroy and Enterprise Island

GPS position at 0800: 64°49S, 063°30W

Air Temp: 1°C Sea Temp: 0°C Wind: W 5 knots



We woke early this morning to an early breakfast in order to allow time for meeting an Antarctic local. Seba had arranged for Hannah, from Goudier Island, to come on board and brief us on the history and current status of Port Lockroy base, her home for the summer. She told us of the base's origin during the Second World War as part of Operation Tabarin, an effort designed to ensure Germany

did not benefit from the Antarctic region. The base was quickly handed across to scientists, who occupied the buildings until the 1960s, running metrological, biological and geological studies alongside an official Post Office. Abandoned, the buildings were left to deteriorate until 1996, when the United Kingdom Antarctic Heritage Trust, the UKAHT, took over, and began to repair and renovate the station. Since then, Port Lockroy has resumed its position as a Post Office, added a shop, and created an impressive museum of life in Antarctica in the 1950s and 60s. Gentoo penguins have moved in to join the people, and the small island is a very busy place. Next door, at Jougla Point, a large colony of Gentoo penguins reside next to a smaller Antarctic Shag colony, and Kelp gulls, Terns, Sheathbills and Skuas all live around the edges, making this little corner of Wiencke Island a treasure-trove of wildlife, with incredible views. The mountains of Wiencke Island, rising above 3,000 feet, made an impressive display behind our landing sites, and if we looked Northwest, Mt Francais, the highest mountain on the peninsula, rising over 9,200 feet, was visible in the distance.

After spending the morning watching Gentoos and spending money in the Port Lockroy gift shop, we had a long sail to our next location, Enterprise Island. We took advantage of the opportunity to sneak in a little Polar Nap, then listened to Bill as he explained the background and impacts of whaling in the North and South Polar Regions.

Later in the afternoon, we arrived off Enterprise Island, and as the sun began to break through, launched our Zodiacs and began a cruise past the Governoren, an old whaling mothership that caught fire and burned to a shell in 1912. The Captain attempted to run the ship ashore, and she still rests within meters of the end of a narrow bay in Enterprise Island. We cruised past the metal hulk, then took the boats past old wooden waterboats, boxes, and metal stanchions used as iceberg fences in the past. We also found Gentoos, Chinstraps, Shags, Terns, Kelp gulls, and signs



of skiers and mountain climbers on both Enterprise and Nansen Island, directly to the South. The light made the area seem possibly the most beautiful we had seen, highlighting the shapes of the snow and ice, and shining through the icebergs. We all had a different trip, exploring little bays and channels, circumnavigating icebergs and small rocks, and generally just enjoying the best Antarctica has to offer. None of us wanted to return to the ship, but eventually Seba convinced all to return, and we gathered in the bar for the now-normal briefing on our plans for tomorrow. As we had dinner and sailed North towards the South Shetland Islands, the sun shone on the Gerlache Strait, and illuminated the snow and glaciers on all the islands around us.



We relaxed in the bar - until the first call of "Orcas!", when we all ran outside hoping to catch a quick look at these amazing animals. We got far more than just a quick glimpse! There were about a dozen of them, with one very big male with a huge dorsal fin, several mature females and younger males, and a couple of very young calves. They splashed about together, showing their tails and bellies, spyhopping, and swimming in close lines together. While the Captain slowed the ship, they came to us, diving under the ship and swimming alongside, then heading out a short distance before coming in again and again. It was a spectacular sight in



the low light, with white blows as they surfaced, then black fins flashing as they went down again. We all rushed from one side of the ship to another, retreated inside to warm fingers and change cards and batteries, and returned outside, for over an hour. At last, we said farewell, and left the whales to their business in the Gerlache Strait, resuming our transit to the South Shetland Islands. Finally, we all came inside, showed off our photos to each other, then retired, much later than intended, but very happy.

Day 8 – Wednesday 13 December 2017

Whalers Bay, Deception Island

GPS position at 0800: 62°59S, 060°33W

Air Temp: 5°C Sea Temp: 2°C Wind: light air

Sailing into an active volcano - what seems to be an absolute crazy idea and at the same time simply impossible was precisely what *Ortelius* did this morning.

At 6:45 the ship sailed through the only 600m wide 'Neptune's Bellows' passage into Port Foster or in other words into the center of the caldera of the Deception Island volcano. The caldera of the still active volcano is directly connected to the ocean and most definitely one of the best natural harbours in the whole Southern Ocean. Perfectly sheltered against winds and waves once passing the challenging entrance into the caldera Port Foster was an obvious choice for whalers seeking sheltered waters for processing their catch as well as for Antarctic flight pioneers and researchers from a variety of nations.



After anchoring in Whaler's Bay (a small bay within Port Foster) there were rich opportunities ashore. If interested in some exercise there was the option of walking up Roland Hill for a perfect overview or as an alternative to 'Neptune's Window' or even to both places. Less interested in exercise but more into history, the first stop was the remains of the southernmost whaling shore station on the globe. Between 1911 and 1931 the Norwegian company Hektor A.S. operated a complete whale processing plant on Deception Island. Today the general layout of the plant with its storage tanks, steam boilers, blubber-, meat- and bone cookers oriented around a central flensing plan is still easily recognizable, but looks like a bizarre industrial monument / scenery as if taken directly from a movie. Easy explanation for this: a minor volcanic activity in 1968 that resulted in a mud-slide / glacier-run like event that buried most of the plant. The same happened to the buildings of the British research station that was originally established in 1944 as 'Base B' of 'Operation Tabarin' the secret British Antarctic operation during World War II. Afraid of Nazi-Germany developing any kind of military activities in Antarctica a group of British officers and polar scientists plotted in the Bar Tabarin the plan to establish a British war-time presence in Antarctica – it might be questioned if they were mainly concerned with the Nazis occupying Antarctica or with continuing their research and not being sent to any high-risk deployment in other theatres of war.

Regardless what might be the answer to this question, 'Base B' became a reality in 1944 and continued to be used by the British Antarctic Survey (BAS) up to the end of the 1960s when it was finally given up due to the increased volcanic activities.



Today, with the majority of the whaling station covered by mud and volcanic materials, the buildings of the research station slowly collapsing, and a black volcanic beach with sulphur-smelly steam escaping from the fumaroles instead of clean Antarctic white snow the place isn't only very special, but in the end maybe something like an 'Antarctic Industrial Pompeii'.

It is definitely a registered Antarctic historic monument and the management plan for the site calls for controlled decay as a monument to volcanic activities and more importantly the relation between humans and the powers of nature. Consequently nature is taking over again and the Kelp gulls are not only nesting upon the remains of the blubber-cookers but also already had three chicks: some cute grey fluffy feather balls just on top of a rusty boiler, which will simply make you humble.



Around noon it was back to the ship and this time not only back to the ship for some hours, but for all the distance across the Drake Passage back to Ushuaia. Some Humpback whales finally waved us a great goodbye with showing their flukes and fins.

In the afternoon a lecture about 'Fishing Activities in the Southern Ocean Past and Today' by Ingo not only opened the lecture series for the next two days, but also helped to get over the somewhat sad feeling that it's already time to sail back. OK, it was probably the 'Happy Hour' in the Bar prior to dinner that really helped...

Day 9 – Thursday 14 December 2017

At Sea in the Drake Passage

GPS position at 0800: 60°48S, 063°06W

Air Temp: 1°C Sea Temp: 1°C Wind: SW 4 knots

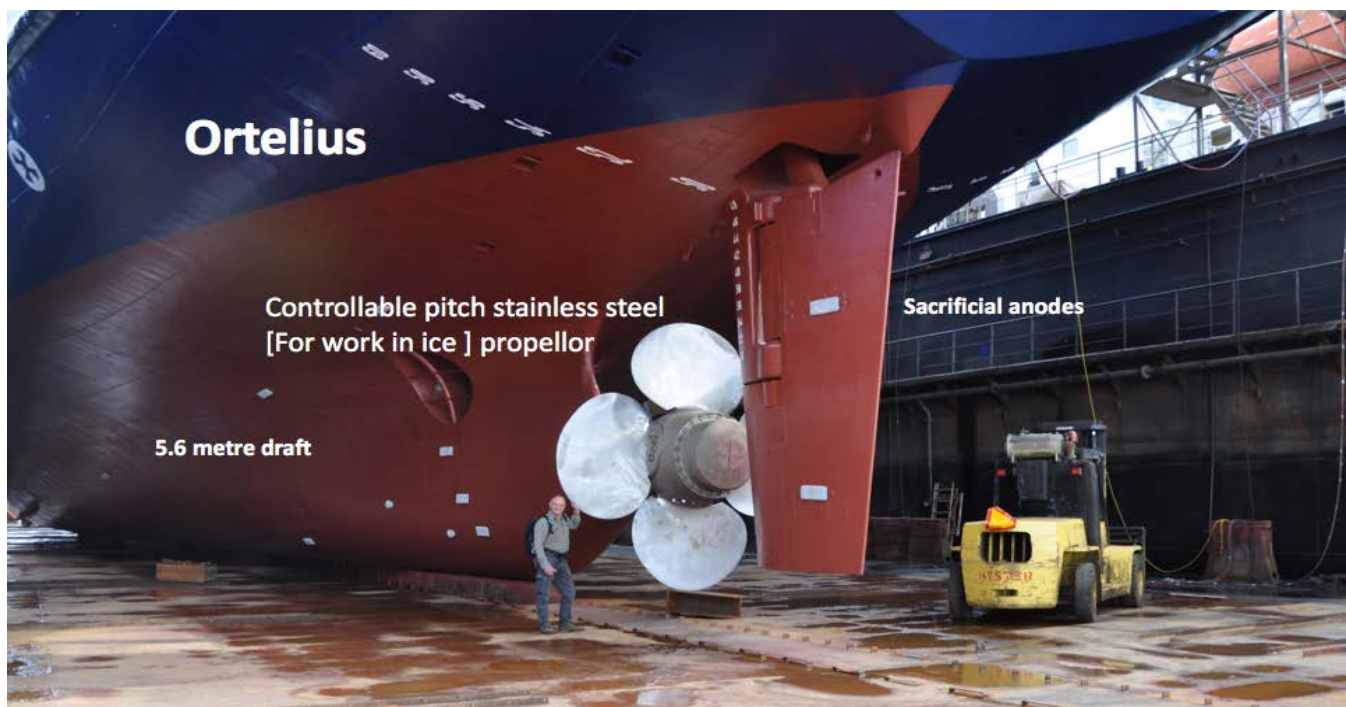
This was a leisurely sea-day...no landings, no zodiac cruises so passengers slept that little bit longer and enjoyed an extended breakfast. What made it especially delightful was the gentle motion of *Ortelius*. The Drake was being kind for once producing only a moderate swell and light winds which enable good progress towards Ushuaia.

The morning lecture on Orcas was delivered by Arjen. This was especially interesting following the superb close-up sighting of an energetic pod the previous evening. Everyone managed to capture good shots as they swam past close to the hull.

Most passengers either spent the day sharing photo files and editing thousands of photographs of the voyage or having short naps in their cabins to catch up on sleep.

Lynn delivered an informative lecture on 'Ice' after lunch followed by a showing of the BBC classic 'Frozen Planet'.

Educational entertainment continued during recap as Ingo presented an excellent summary of Amundsen's expedition to the South Pole and Bill followed with a fact filled 'Looking, Seeing, Thinking ...Secret places of *Ortelius*' lecture, this time relating it the ship's engine room.



Lots of patches remained in their boxes as many passengers found they had developed 'sea-legs' since their first Drake Passage crossing. The sea remained calm.

As passengers shared photographs and discussed their experiences on and Antarctica ...over and over again the comment was that this voyage had in every way exceeded expectations...it had been superb in every aspect.

Day 10 – Friday 15 December 2017

At Sea in the Drake Passage

GPS position at 0800: 57°03S, 065°06W

Air Temp: 7°C Sea Temp: 6°C Wind: W 3 knots

Experiencing better weather and with the sun shining through our portholes, we woke up feeling much better from the seasickness produced by the motion of the Drake Passage. It was good to see some faces that disappeared over the last two days while having breakfast, but there was also a sad touch, because the adventure was getting to the end.

The staff still had things for us to do and at midmorning Ingo gave a fantastic lecture about Windjammer and Cape Horn, about sailing vessels in the Drake, wrecks and hulks on the Falkland Islands (Islas Malvinas). As the good weather remained on our side, it was possible to take some last photos before approaching South America. Our last lunch on board was followed by a documentary from BBC, Frozen Planet, that showed some awesome images of the Arctic and its fauna.

Well, not every story has a completely happy ending, during the afternoon DJ and Sava called once more through the PA system to pay our bills... Ouch!!! But, at least right after that we got rid of the rubber boots and life jackets that were taking space in our cabins and making us feel a little bit sad because there were no more activities to wear them for anymore.

Last recap time arrived, and even if we expected no more surprises, suddenly we realized that one of us was not a common passenger. The COO of Oceanwide introduced himself after being incognito during the whole trip. Himself, Seba and the Captain gave a great speech that closed all our feelings about a wonderful trip and experience with the crew and staff at the white continent.

That was not it, before the last great dinner, DJ and Sava introduced the some of the heroes behind the scenes, part of the staff who had been making us feel even better than home helped by Bill's cheerleading.

With our last coins and Euros in our pockets, we had to visit once more the bar to have the last chats and memories share of one of the best experiences in our life.



Day 11 – Saturday 16 December 2017

Ushuaia

GPS position at 0800: 54°48.6'S, 068°17'W

Air Temp: 7°C Sea Temp: 10°C Wind: W 3 knots

All good things come to an end, as they say. Today was our last morning on the *Ortelius*. After a last night in our cabin, which had come to feel like home, it was time to move on to new adventures. We put our luggage in the corridors this morning as asked, so the crew could take them out and off the ship. After one last wakeup call by Seba, and one last meal on board, it was time to say goodbye. Goodbye to our ship and its crew and staff, and to our new friends. Arrangements were made to stay in touch and farewells were said. We could look back to an excellent and successful trip and all of us marveled at the memories of wildlife and spectacular scenery during all the activities.

At 8:30 we handed in the keys to our cabins, picked up our luggage from the pier and walked towards Ushuaia, heading for new adventures and with many great memories in our pocket.



*Thank you all for such a wonderful voyage, for your company,
good humour and enthusiasm. We hope to see you again in the future,
wherever that might be!*

**Furthest South: 65°06'S 64°00'W
Total Distance Sailed: 1596 nm**

**On behalf of
Oceanwide Expeditions,
Captain Mika Appel,
Expedition Leader Sebastian Arrabola,
Hotel Manager Dejan Nikolic
and all the crew and staff,
it has been a pleasure travelling with you.**

Antarctic Peninsula (OTL 24)
M/v Ortelius 6th December - 16th December 2017

Species list: Common birds and Marine Mammals from Beagle Channel to Antarctic Peninsula

English	Latin	Ushuaia			at Sea			At sea			Ushuaia		
		6-dec	7-dec	8-dec	9-dec	10-dec	11-dec	12-dec	13-dec	14-dec	15-dec	16-dec	
PENGUINS													
Emperor Penguin	<i>Aptenodytes forsteri</i>												
Adelie Penguin	<i>Pvaoscelis adeliae</i>							x	x				
Gentoo Penguin	<i>Pygoscelis papua</i>							x	x				
Chinstrap Penguin	<i>Pvaoscelis antarctica</i>				x	x		x	x				
Magellanic Penguin	<i>Spheniscus magellanicus</i>								x	x			
ALBATROSS													
Wandering Albatross	<i>Diomedea exulans</i>												
Northern Royal Albatross	<i>Diomedea sanfordi</i>												
Southern Royal Albatross	<i>Diomedea epomophora</i>												
Black-browed Albatross	<i>Diomedea melanophris</i>	x	x						x	x	x		
Grey-Headed Albatross	<i>Diomedea chrysostoma</i>												
Light Mantled Albatross	<i>Phoebastria palpebrata</i>		x	x					x				
PETRELS													
Southern Giant Petrel	<i>Macronectes giganteus</i>	x	x					x	x	x	x		
Antarctic Fulmar	<i>Fulmarus alacialeoides</i>			x		x							
Cape Petrel (Pintado)	<i>Daption capensis</i>		x	x	x	x		x	x	x	x		
Antarctic Petrel	<i>Thalassoica antarctica</i>												
Kerguelen Petrel	<i>Pterodroma brevirostris</i>						x	x					
Snow Petrel	<i>Pagodroma nivea</i>												
Soft Plumaged Petrel	<i>Pterodroma mollis</i>												
Blue Petrel	<i>Halobaena caerulea</i>												
White-chinned Petrel	<i>Procellaria aequinoctialis</i>												
Sooty Shearwater	<i>Puffinus griseus</i>											x	
Great Shearwater	<i>Puffinus gravis</i>												
Antarctic Prion	<i>Pachyptila desolata</i>			x									
Slender-billed Prion	<i>Pachyptila belcheri</i>			x						x			
Fairy Prion	<i>Pachyptila turtur</i>												
Wilson's Storm-Petrel	<i>Oceanites oceanicus</i>				x	x	x	x					
Black-bellied Storm-Petrel	<i>Fregata tropica</i>		x	x						x			
Common Diving-Petrel	<i>Pelecanoides (urinatrix) berard</i>												

SHAGS												
Rock Shag	<i>Phalacrocorax magellanicus</i>	X										
Imperial (Blue Eyed) Shag	<i>Phalacrocorax atriceps</i>	X										
Antarctic Shag	<i>Phalacrocorax bransfieldensis</i>				X	X	X	X	X			
SHEATHBILLS												
Pale-faced Sheatbill	<i>Chionis alba</i>				X		X	X				
SKUAS												
Chilean Skua	<i>Catharacta chilensis</i>	X	X									
South Polar Skua	<i>Catharacta maccormicki</i>											
Sub-Antarctic (Brown) Skua	<i>Catharacta antarctica</i>				X	X	X	X				
GULLS AND TERNS												
Dolphin Gull	<i>Larus scoresbii</i>											
Kelp Gull	<i>Larus dominicanus</i>				X	X	X	X	X			
Brown-hooded Gull	<i>Chroicocephalus maculipennis</i>											
South American Tern	<i>Sterna hirundinacea</i>	X										
Antarctic Tern	<i>Sterna vittata</i>				X	X	X	X	X			
MAMMALS												
English	Latin											
BALEEN WHALES		6-dec	7-dec	8-dec	9-dec	10-dec	11-dec	12-dec	13-dec	14-dec	15-dec	16-dec
Antarctic Minke Whale	<i>Balaenoptera bonaerensis</i>						X					
Humpback Whale	<i>Megaptera novaeangliae</i>			X				X	X	X		
Blue Whale	<i>Balaenoptera musculus</i>											
Fin Whale	<i>Balaenoptera physalus</i>			X						X		
TOOTHED WHALES &												
Long Finned Pilot whale	<i>Globicephala melas</i>											
Killer Whale/Orca	<i>Orcinus orca</i>							X		X		
Hourglass Dolphin	<i>Laagenorhynchus cruciger</i>											
Dusky Dolphin	<i>Laagenorhynchus obscurus</i>	X									X	
Peale's Dolphin	<i>Laagenorhynchus australis</i>											
SEALS												
Leopard Seal	<i>Hvdurura leptonvx</i>											
Crabeater Seal	<i>Lobodon carcinophaqus</i>				X		X					
Weddell Seal	<i>Leptonychotes weddelli</i>						X					
Southern Elephant Seal	<i>Mirounga leonin</i>								X			
Antarctic Fur Seal	<i>Arctocephalus gazella</i>								X			
Ross Seal	<i>Ommatophoca rossi</i>											



NATURE

UP CLOSE AND PERSONAL

WITH OUR NEW SHIP HONDIUS



OCEANWIDE
EXPEDITIONS

DEAR FUTURE PASSENGER

For twenty-five years it has been our passion to provide small-scale cruises that give our passengers maximum firsthand contact with the polar regions. Our vessels have always been developed with this in mind.

Our new ship, m/v Hondius, honors this standard while creating a new one: Hondius is the most structurally and technologically advanced class of polar cruise ship to date, designed from the ground up for rapid response to weather and wildlife conditions that exist nowhere else in the world. It is a vessel that not only meets the challenges of the polar regions but optimizes their opportunities for adventure, truly worthy of the spectacular surroundings we so enjoy sharing with our passengers.

We proudly present to you Hondius, a new ship for a new age of polar expedition.

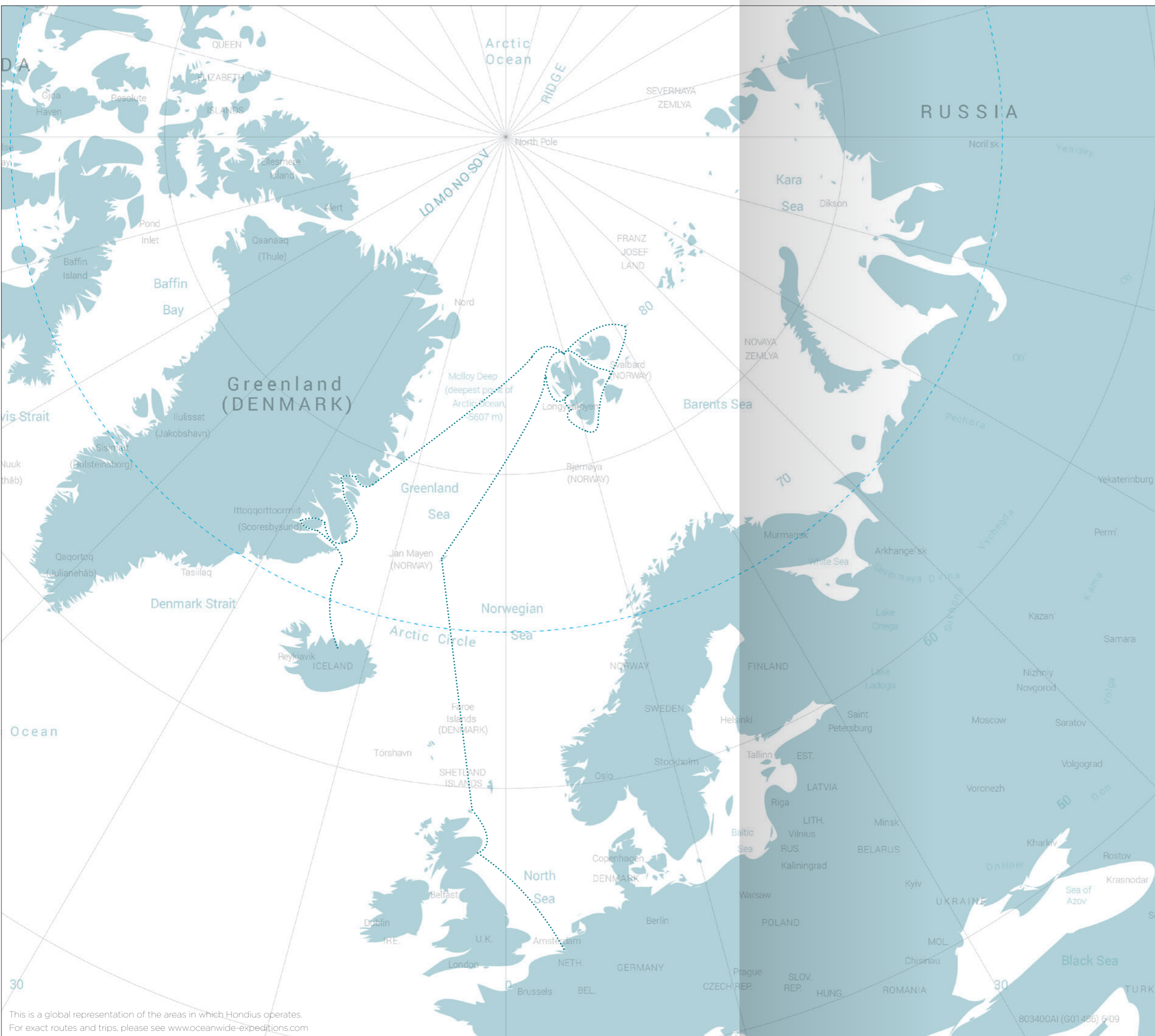
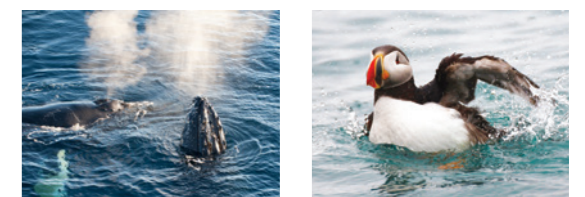


Michel
van Gessel
CEO

THE ARCTIC

Whether you're sailing among the glaciers of eastern Greenland or scanning for polar bears on the Svalbard shore, to visit the Arctic is to step into another world - or an earlier version of this one.

Let Hondius take you on a grand tour of the most iconic scenery of the circumpolar north. Here in the Arctic, the world's bravest explorers carved their reputations out of an indomitable wilderness of ice and snow. They dreamed the impossible, they accomplished the incredible, and they set the course for you to follow. Your Arctic expedition will introduce you to landscapes and wildlife you can only see here, and grant you an adventure only the far north can provide.



This is a global representation of the areas in which Hondius operates. For exact routes and trips, please see www.oceanwide-expeditions.com

ANTARCTICA

Plunging whales, colossal penguin colonies, and endless spans of blazing blue ice have kept Antarctica central to the search for polar adventure since the earliest days of far south discovery.

There's no getting closer to Antarctica than a Hondius Antarctic voyage. With your choice of multiple routes all selected for their capacity to yield the utmost shore time, you won't miss a thing during your days in this surreal polar landscape. Sail the same waters navigated over a century ago by the world's legendary discoverers, walk a continent on which no indigenous human life was born, and feel for yourself the exhilaration of seeing the world as if for the first time.





EVERY MOMENT A NEW MEMORY

EVERY STEP A NEW ADVENTURE

FLEXIBLE, FAST, FORTIFIED

FLEXIBLE ITINERARY DEPLOYMENT

Hondius is engineered for flexibility above all else, optimized for maximum engagement with nature, wildlife, and outdoor activities – because a dynamic environment demands a dynamic vessel, and there is no environment more dynamic than the polar regions.

FAST SHIP-TO-SHORE OPERATIONS

You came to the polar regions to see the polar regions, not the outer decks of a ship. The agility of the Hondius design gives you this opportunity, delivering you to shore as fast as possible so you can enjoy these spectacular landscapes as much as possible.

FORTIFIED POLAR CLASS 6 TECHNOLOGY

Being flexible and fast does not make Hondius frail: It is one of the first civilian vessels in the world to receive a Polar Class 6 notation, the most advanced category of polar cruise ship to date. When you set foot on Hondius, you are indeed choosing the best of modern marine science.



SPECIFICATIONS

350 feet of ice-strengthened **Polar Class 6** technology impeccably fortified to the latest standards of the International Maritime Organization.

Registered: The Netherlands
Length: 107.6 meters
Breadth: 17.6 meters
Draft: 5.30 meters
Ice class: Polar Class 6 (equivalent 1A-Super)
Displacement: 5,590 tonnes
Propulsion: 2 x ABC main engines;
total 4,200 kW
Speed: 15 knots
Passengers: 176 in 83 cabins
Staff & crew: 72
New build 2019



“This ship was built with all aspects of the polar environment in mind, from the variability of the weather down to the enormous diversity of the wildlife.”

– Captain Alec Eastrook



ON-BOARD EXPERIENCE

ELEGANT PUBLIC AREAS, COZY LODGINGS,
& SURPRISING CUISINE IN EARTH'S WILDEST
REGIONS

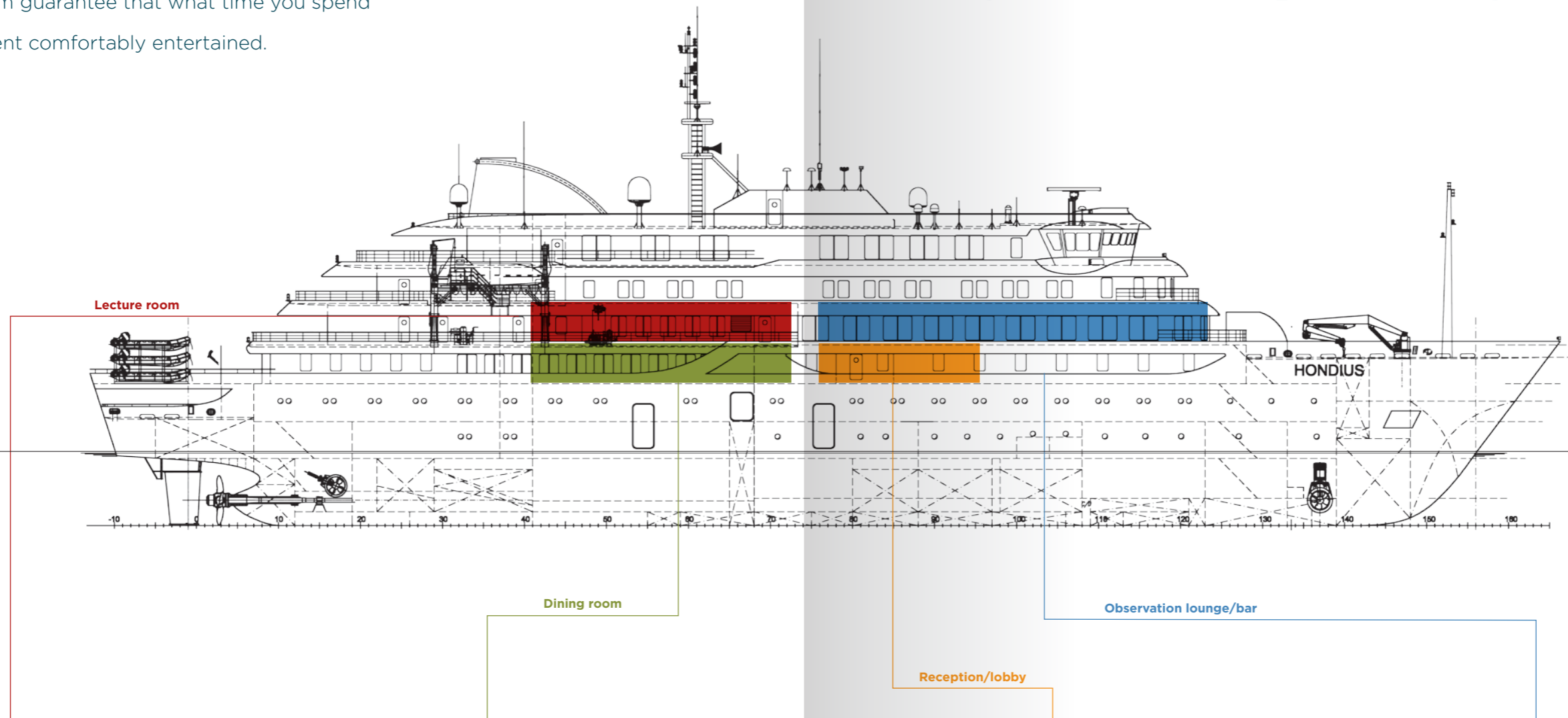
Just because you're sailing through the least civilized locations on Earth doesn't mean your on-board experience has to be uncivilized. As a Hondius passenger, you will enjoy cuisine, surroundings, and service that starkly contrast the rugged world just outside your window.



ELEGANT PUBLIC AREAS

A sizable observation lounge, fully provisioned bar, and separate library room guarantee that what time you spend on board will be spent comfortably entertained.

INSIDE M/V HONDIUS





COZY LODGINGS

Take your pick of numerous cabins and suites, all custom-designed and impeccably outfitted in stylish midcentury modern décor.

Right: Eight junior suites (19-20 meters²).
Below: Six grand suites (27 meters²) with balcony. **Right bottom:** Eleven twin deluxe cabins (19-21 meters²).



Junior Suite



Hondius Suite



Quadruple Porthole

Left: One spacious Hondius suite (35 meters²). **Right:** Four quadruple porthole cabins (from 12-18 meters²). **Left bottom:** Eight superior cabins (20-21 meters²). **Right bottom:** twenty nine twin porthole cabins (from 12-18 meters²).



Grande Suite



Twin Deluxe



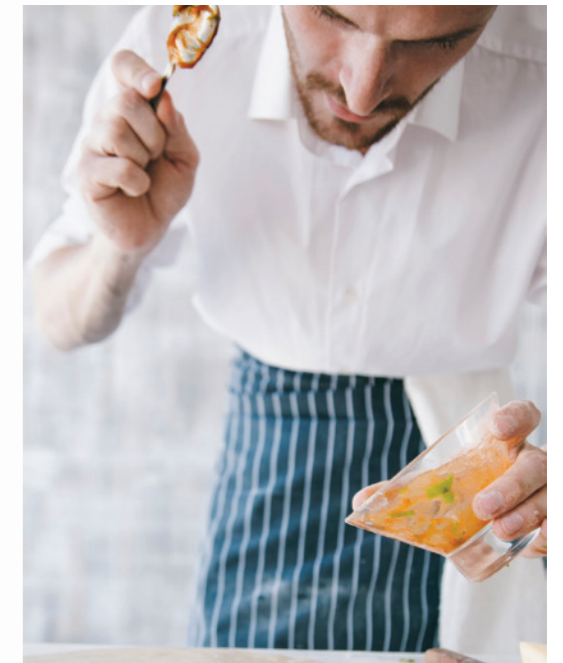
Superior Cabin



Twin Porthole

SURPRISING CUISINE

After a full day of cruising between glaciers, hiking shorelines, and scouting for wildlife, any food looks delicious. But on Hondius you won't be treated to just any food. With our new and expanded menus, your palate is sure to be surprised at how cultivated polar cuisine can be.



“Our food strikes a balance between the nourishing and the refined, providing cuisine that both excites the senses and supports the appetites of our most active passengers.”

– Chef Simon Rovik

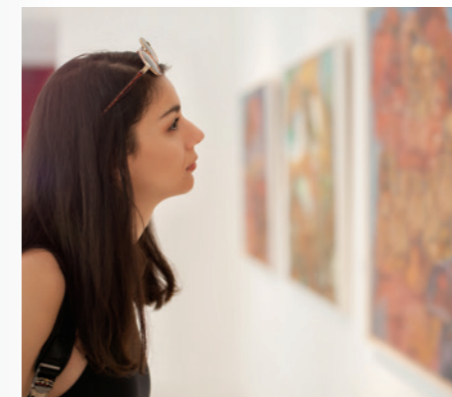
SAIL WITH US INTO YOUR OWN STORY



DISCOVER A NEW WORLD ON BOARD AND OFF

INTERACTIVE, EXPERIENTIAL, INFORMAL

Whether you're on the ship or out in nature, your time will not be idly spent: Central to the Hondius experience is a wealth of on-board and in-field activities that extend beyond the usual supplementary fare, keeping you as informed as you are engaged.



“The great polar explorers had one thing in common: insatiable curiosity about the world around them. Many of our passengers share that curiosity, and on Hondius it’s our goal to nourish it.”

– Expedition Leader Michael Ginzburg

ADVANCED POLAR TECHNOLOGY

FOR ENHANCED POLAR EXPERIENCES

With Hondius you can enjoy the polar landscape as much as possible while impacting it as little as possible.

Hondius exceeds the latest green requirements imposed by the International Maritime Organization, using only bio-degradable paints, LED lighting, steam heat, and flexible power management systems to keep fuel consumption and CO₂ emission at the absolute minimum.



“Preserving the environment is as important as protecting our passengers. Only with sustainable ships like Hondius can we continue to responsibly share these breathtaking regions.”

– COO Mark van der Hulst



IN HONOR OF INNOVATORS PAST

All explorers, adventurers, and innovators know: The journey of a thousand miles starts with a single step.

Faith in this notion sustained the great discoverers as they braved regions previously unknown to the world at large. We have always honored this pioneering spirit by naming our vessels after the cartographers who first put these regions to paper. Hondius continues this tradition.



The two Hondius families were forerunners in cartography during the Dutch Golden Age.



Collection: Oceanwide Expeditions



THE MANY HIGHLIGHTS OF HONDIUS

Flexible, fast, and fortified, capable of swift and safe response to fluctuating polar conditions

Sheltered Zodiac boarding zone for easier entry into the boats that will shuttle you to shore, making Hondius ideal for land-based excursions

Elegant, cozy, and surprising, with public areas, passenger lodgings, and cuisine that will fuel your explorations and stimulate your senses

Interactive, experiential, and informal activities that will engage and entertain you on the ship and off

Environmentally friendly technology to help ensure your cruise is higher impact for you, lower impact for nature



M/V HONDIUS
**THE NEW
STANDARD
IN POLAR
EXPEDITIONS**





OCEANWIDE

EXPEDITIONS

CONTACT & BOOKING INFORMATION

Oceanwide Expeditions | Head Office

Visserijkade 5 • 4382 ZA Vlissingen • The Netherlands

T +31 (0) 118 410 410 **F** +31 (0) 118 410 417

E info@oceanwide-expeditions.com

Oceanwide Expeditions | USA & Canada Office

14950 Heathrow Forest Parkway, Suite 560 • Houston, TX 77032 • USA

T +1 800 453 7245 or +1 281 741 2372 **F** +1 281 749 8220

E usa@oceanwide-expeditions.com



Captain Mika Appel

and his international crew of 47

including

First Officer:	Toni Salo	[Finland]
Second Officer:	Franziska Braas	[Germany]
Third Officer:	Luis Oroceo	[Philippines]
Chief Engineer:	Guntis Dizbite	[Latvia]
Hotel Manager:	Dejan Nikolic	[Serbia]
Assist. Hotel Manager:	Sava Savov	[Bulgaria]
Head Chef:	Khabir Moraes	[India]
Sous Chef:	Richard Arokiasamy	[Malaysia]
Ship's Physician:	Lauke Bisschops	[The Netherlands]

and

Expedition Leader:	Sebastian Arrebola	[Argentina]
Assist. Expedition Leader:	Arjen Drost	[The Netherlands]
Expedition Guide:	Bill Smith	[Scotland]
Expedition Guide:	Jerry Zhao	[China]
Expedition Guide:	Lynn Woodworth	[Canada]
Expedition Guide:	Benjamin Giunchi	[Argentina]
Expedition Guide:	Pete Gwatkin	[Scotland]
Expedition Guide:	Ingo Heidbrink	[Germany]

Welcome you on board!



Welcome on board! Your luggage will be delivered to your cabin as soon as possible. After we are all onboard, please check and notify Reception if you are missing anything or have the wrong luggage. While we are embarking please feel free to explore the ship. The lounge is located on Deck 6.

~17.00 **Mandatory Safety Briefing in the Lecture room on deck 3. ALL PASSENGERS are required** to attend this very important safety briefing.

We will conduct the mandatory Lifeboat Drill right after. Please listen for the Alarm.

~18.00 Approximate sailing time. As we leave Ushuaia we recommend that you enjoy the views from the outside decks.
Please Note: The Bridge and will be closed for departure while we navigate the Beagle Channel.

18.30 Soon after sailing we would like to invite you to the **Lounge** (Deck 6) for a **welcome briefing** by Expedition Leader Sebastian Arrebola and an introduction to the ship by Hotel Manager Dejan Nikolic.

Afterwards there will be Captain's Cocktails! Captain Mika Appel invites you to join him for a welcome drink in the Lounge, where you will also meet the Expedition Team.

19.30 **Dinner** is served in the Dining Room located on **Deck 4** behind **Reception**.
Bon appétit!

Please note that tonight we will be sailing into the open ocean so please secure your valuables and make sure your cupboard doors and drawers are tightly closed.

Remember: KEEP ONE HAND FOR THE SHIP AT ALL TIMES & BEWARE OF DOOR JAMS.



OCEANWIDE

EXPEDITIONS

Thursday 7 December 2017

The Drake Passage

- 0745 Wakeup call
- 0800 **Breakfast** buffet will be served in the Dining Room for one hour.
- 1000 Join Lynn in the **Bar** for a lecture about **Seabirds and the Southern Ocean**.
Come to learn more about the biology of the magnificent birds we see
around the ship.
- 1230 **Lunch** is served in the Dining Room.
- 1500 Join Arjen in the **Bar** to learn more about **Nature Photography**. He will give
some tips about how to improve the pictures you can take during this trip.
- 1700 Join Sebastian in the **Bar** for a lecture about the **Geography of Antarctica**.
Learn more about the differences between the Arctic and Antarctica,
katabatic winds and other geographical phenomenon.
- 1830 **Recap:** This is our daily opportunity to revisit the events of the day and
look forward to tomorrow's plans. Sebastian and the Expedition Team will
meet you in the Lounge.
- 1900 **Dinner** is served in the Dining Room. Enjoy your meal!

We will be sailing in the open ocean for the next two days. Please take appropriate precautions: secure belongings, close drawers, take medication. And remember:
KEEP ONE HAND FREE FOR HOLDING ONTO THE SHIP AT ALL TIMES!



Friday 8 December 2017
The Drake Passage

- 0745 Wakeup call
- 0800 **Breakfast** buffet will be served in the Dining Room for one hour.
- 0930 We will start distributing your **Rubber Boots and Life Jackets**. To ensure a smooth operation we will call you by Deck number so please listen out for announcements. The boots will be in the Lecture Room, located on Deck 3 forward. Bring your thick socks!
- 1100 Please come to the Lecture Room and join Sebastian for the **mandatory IAATO and Zodiac safety briefing**. Everybody who wants to go ashore in Antarctica will have to come to this briefing!
- 1230 **Lunch** is served in the Dining Room.
- 1345 **Camping briefing** – A **mandatory** briefing for those who are on the list to go camping. Join camping guides Jerry and Ben in the Lecture Room to learn more about this activity.
- 1500 **Kayak briefing** – A **mandatory** briefing for those who signed up for kayaking. Join kayak guide Pete in the Lecture Room to learn more about this activity.
- 1630 **Vacuuming time!** We will call you by deck to the Lounge to vacuum your outer clothes and the bags that you will be taking ashore. Please listen out for your turn and don't forget to sign the IAATO biosecurity declaration.
- 1830 **Recap** - Join Sebastian and the Expedition Team in the Lounge.
- 1900 **Dinner** is served in the Dining Room. Enjoy your meal!

We will be sailing in the open ocean for the next day. Please take appropriate precautions: secure belongings, close drawers, take medication. And remember:
KEEP ONE HAND FREE FOR HOLDING ONTO THE SHIP AT ALL TIMES!



OCEANWIDE

EXPEDITIONS

Saturday 09 December 2017 *Cuverville Island & Paradise Harbour*

0715 Wakeup call

0730 **Breakfast** buffet will be served in the Dining Room for one hour.

This morning we plan to go ashore at **Cuverville Island**. Here we can offer time with Gentoo penguins and a hike to a higher point on the island.

~0900 **Everyone going for a landing** please come to the gangway.

1230 **Lunch** is served in the Dining Room.

In the afternoon we plan to offer a split landing and zodiac cruise in Paradise Bay. We will take the first boats ashore at the Argentinian station Brown. Here we can have a look at the station (which will not be in use at the moment), more Gentoo Penguins and enjoy the surrounding scenery. The other zodiacs will take you on a zodiac cruise towards the stunningly beautiful Skontorp Cove. After some time, we will switch, so both groups will get to see both places.

~1430 **Everyone else going ashore** please come to the gangway.

1830 Daily **Recap in the Lounge**

1900 **Dinner** is available in the Dining Room.

2030 **Camping Night – Paradise Harbour**

Please be ready to depart for your night ashore. Remember to pack warm clothes and don't forget: **The bathrooms onboard are more comfortable than the one onshore!!**



OCEANWIDE

EXPEDITIONS

Sunday 10 December 2017 *Neko Harbour & Orne Harbour*

0715 Wakeup call

0730 **Breakfast** buffet will be served in the Dining Room for one hour.

This morning we plan to go ashore at **Neko Harbour**. Here we can offer time with Gentoo penguins and a hike to a higher point on the continent of Antarctica.

~0900 **Everyone going for a landing** please come to the gangway.

1230 **Lunch** is served in the Dining Room.

In the afternoon we like to offer a zodiac cruise in Orne Harbour. This bay had steep mountains or glaciers on all sides, so is not suitable for landing, but ideal for a zodiac cruise. Apart from stunning scenery, this place is also known as one of the few places in the Gerlache Strait which has a colony of Chinstrap Penguins.

~1500 **Everybody who would like to join the zodiac cruise** please come to the gangway.

1830 Daily **Recap in the Lounge**.

1900 The galley team has prepared a special **Antarctic dinner**. Stand by for announcements.



OCEANWIDE

EXPEDITIONS

Monday 11 December 2017

Pleneau and Petermann Island

This morning we will navigate the spectacular Lemaire Channel. Our morning timing will depend on how much ice we find in the Lemaire, so please listen for announcements. We will also reach our southernmost point somewhere during the day.

0630 Wakeup call

We will sail the ship through the famous **Lemaire Channel**. This narrow channel is only 600m wide at its narrowest point and is surrounded by spectacular, glaciated mountains. Please come to the outer decks and enjoy.

0730 **Breakfast** buffet will be served in the Dining Room for one hour.

0900 In the morning we hope to offer a **landing on Pleneau Island**, home to Gentoo penguins. This area is known for huge icebergs being grounded in the shallow waters.

1230 **Lunch** is served in the Dining Room.

1500 Please come to the gangway for our **landing at Petermann Island**. This island has a large Gentoo Penguin colony and a smaller one of Adelie Penguins, plus some Antarctic shags nesting on the North end of the island.

1900 Daily **Recap in the Lounge**

1930 **Dinner** is available in the Dining Room.



OCEANWIDE

EXPEDITIONS

Tuesday 12 December 2017 *Port Lockroy & Foyen Harbour*

- 0645 Wakeup call
- 0700 **Breakfast** buffet will be served in the Dining Room for one hour.
- ~0800 Meet Sebastian and a **team member from Port Lockroy** in the **Bar** for a short talk about the base and museum.
- 0830 We hope to offer a landing at both **Port Lockroy** base and **Jougla Point**. The first groups will be brought to the base, where they can have a look at the museum, do their shopping and buy and send postcards. The second half will first go to Jougla Point, a very scenic place with Gentoo Penguins, Antarctic Shags and whale bones. After an hour we will swap both groups around so everybody gets to see both places.
- 1200 **Lunch** is served in the Dining Room.
- TBA* We hope to offer a zodiac cruise at **Foyen Harbour** and around **Enterprise Island**. On this island there are several historical artefacts to be seen and there is the chance on wildlife like penguins and seals.
- 1900 Daily **Recap in the Lounge**
- 1930 **Dinner Buffet** is available in the Dining Room.

***TBA = To be announced**



OCEANWIDE

EXPEDITIONS

Wednesday 13 December 2017 *Whaler's Bay, Deception Island*

0645 Wakeup call

In the early morning we hope to sail through Neptune's Bellows, the narrow entrance to the caldera of Deception Island.

0730 **Breakfast** buffet will be served in the Dining Room for one hour.

0900 We hope to offer a landing at Whaler's Bay inside Deception Island. Here we find several huts and remains of whaling activities on the island. There will also be an opportunity for a longer walk towards Neptune's Window or Roland Hill.

1230 **Lunch** is served in the Dining Room.

1500 Join Ingo in the Lecture Room for his talk **To the far end of the globe or the near-plunder of an icy paradise**. Learn more about krill, thornfish and marbled rockcod and the international distant water fisheries off Antarctica in recent years.

1815 Daily **Recap in the Lounge**

1900 **Dinner** is available in the Dining Room.

After lunch we will head for open waters again. Please make sure your belongings are stored properly and take seasickness medicine if needed.



Thursday 14 December 2017
The Drake Passage

- 0800 **Breakfast** buffet will be served in the Dining Room for one hour.
- 1000 Join Arjen in the **Bar** for a lecture about **Orcas** and learn more about the biology and especially the evolution of these special animals.
- 1230 **Lunch** is served in the Dining Room.
- 1500 Join **Lynn** in the bar for a talk about **ice** and learn more about this important feature of the Antarctic ecosystem.
- 1700 As we've just visited the Frozen Continent, we like to show the first episode of the BBC documentary **Frozen Planet**. Come to the **Bar** and enjoy.
- 1830 Come and join Sebastian and the expedition team in the bar for our daily **recap**.
- 1900 **Dinner** is served in the Dining Room. Enjoy your meal!

We will be sailing in the open ocean for the next two days. Please take appropriate precautions: secure belongings, close drawers, take medication. And remember:
KEEP ONE HAND FREE FOR HOLDING ONTO THE SHIP AT ALL TIMES!



Friday 15 December 2017

The Drake Passage

- 0800 **Breakfast** buffet will be served in the Dining Room for one hour.
- 1030 Come to the **Bar** to hear Ingo give the lecture '**Windjammer and Cape Horn**', about sailing vessels in the Drake Passage, wrecks and hulks on the Falkland Islands (Islas Malvinas).
- 1230 **Lunch** is served in the Dining Room.
- 1400 **Frozen Planet: summer** – Come to the bar to see the Summer episode of this BBC-documentary.
- ±1500 Time for **settling accounts** with DJ and Sava at **Reception**. We will call you by deck number, please wait till your deck is called to avoid queues. You can pay with Cash Euro, USD, Visa or MasterCard. Please listen for announcements.
- TBA Time to **return your rubber boots**. We will call you by deck number to deliver your **boots and life jacket** to the Lecture Room on deck three forward. Please don't return any boots before we call you. Those who have **rental gear from New Headings**, please bring it down when you bring your boots. We will return everything to the rental company for you.
- 1815 Please meet with Sebastian and the expedition staff in the **Bar** for a quick briefing about plans for disembarkation tomorrow and afterwards a farewell toast from your Captain.
- 1900 **Farewell Dinner** is served in the Dining Room. Enjoy your meal!

We will be sailing in the open ocean for the next day. Please take appropriate precautions: secure belongings, close drawers, take medication. And remember:
KEEP ONE HAND FREE FOR HOLDING ONTO THE SHIP AT ALL TIMES!



Saturday 16 December 2017
Ushuaia

We will be arriving in Ushuaia early this morning. The Bridge, forward Bow Deck and rear Stern Deck will be closed as the officers and crew will be working to bring us to dock. Once we dock, please **DO NOT go down the gangway** until an announcement has been made that we have been cleared to disembark by the local authorities.

Please ensure your luggage is outside your cabin by the time DJ invites you to breakfast at 07:30. We will move your main luggage to the pier, and after the busses have arrived we will call you to come down the gangway. You must ensure your own luggage is moved to the airport bus or the truck to the luggage storage place if you wish to use either of these services.

0730 **Breakfast** buffet will be served in the Dining Room for one hour.

~0830 We expect the busses to arrive and to begin
Disembarkation. Please listen and wait for announcements, and it will be a great help to all the crew if you do not wait in the Lobby, which will be a very busy place. The Bar will offer good views of Ushuaia, and long-awaited cell/mobile phone coverage.

The Captain, Crew, Staff and all of Oceanwide thank you for joining us on this incredible voyage, and wish you all the best in your travels.

We hope to see you again, North or South!

"Fair winds and following seas"